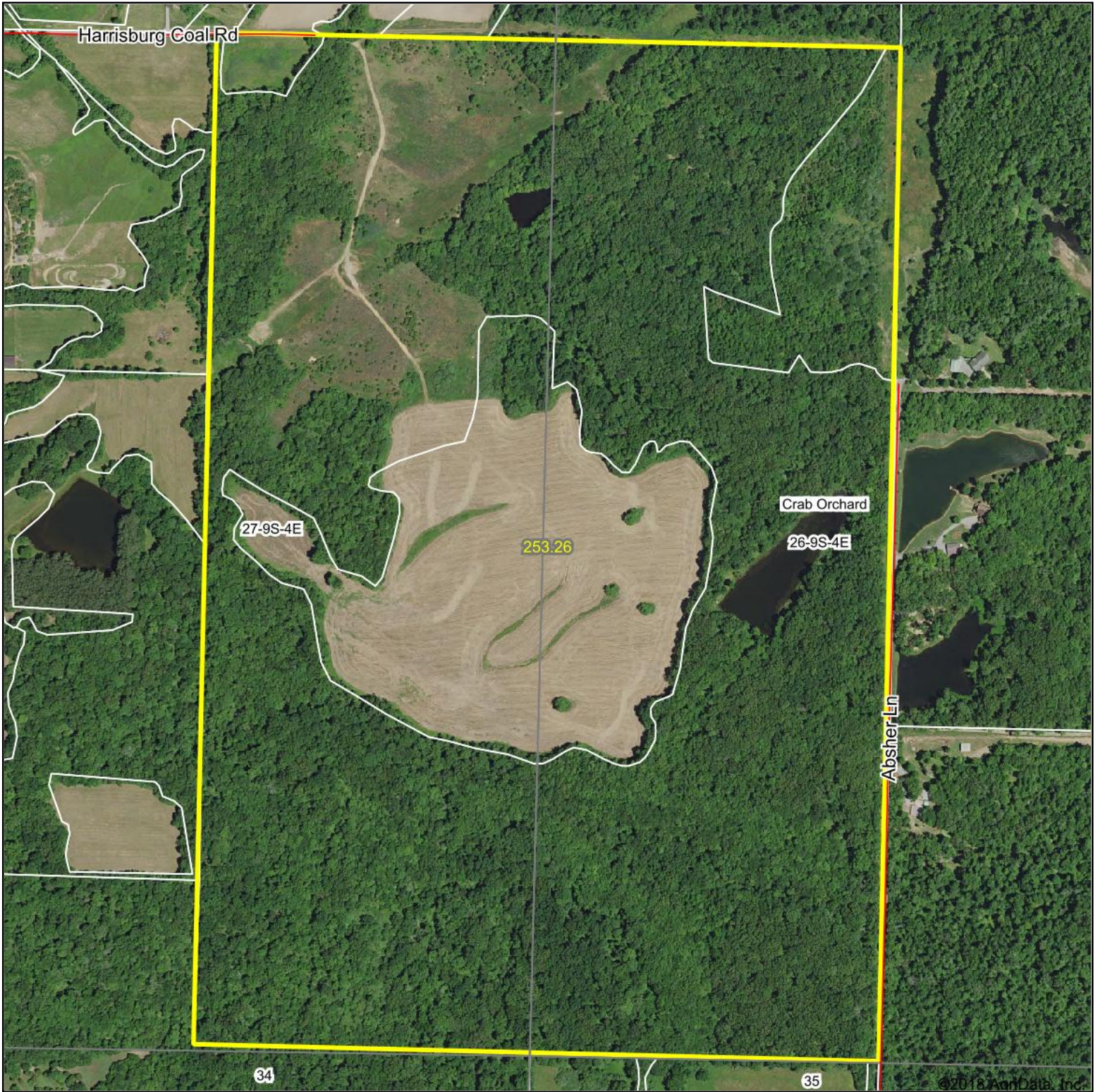
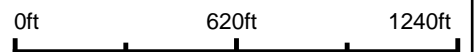


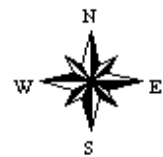
Aerial Map



map center: 37° 42' 27.46, -88° 44' 38.41

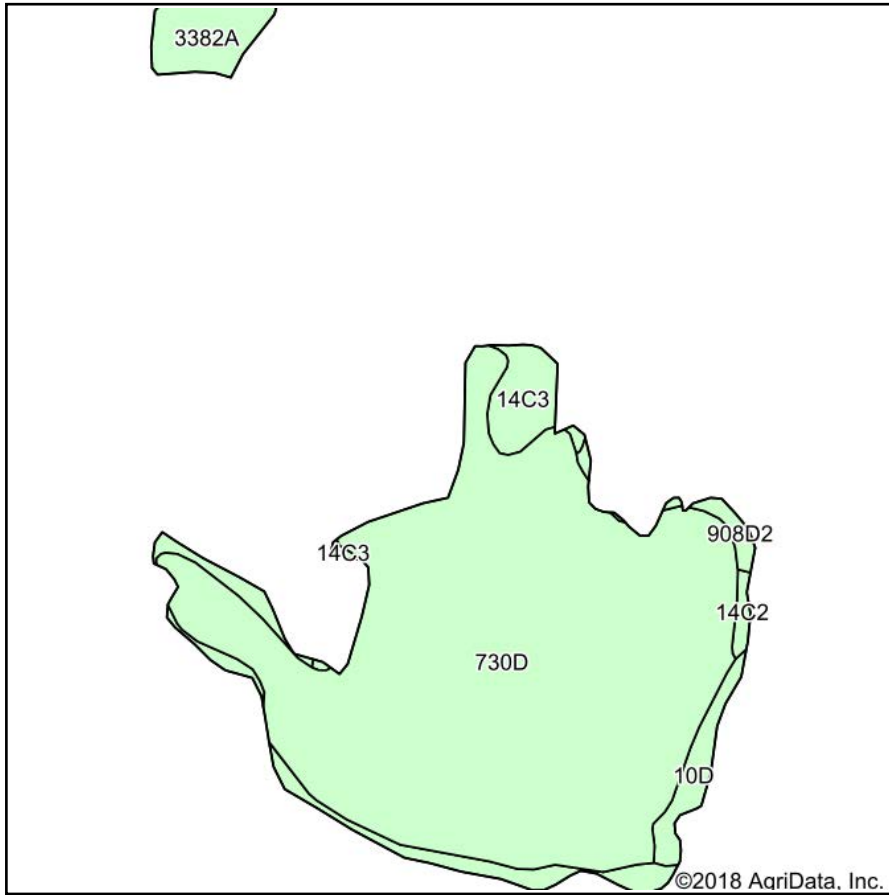


26-9S-4E
Williamson County
Illinois

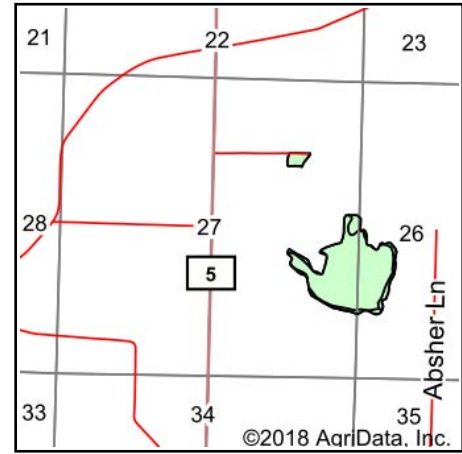


6/25/2018

Soils Map



Soils data provided by USDA and NRCS.



State: **Illinois**
 County: **Williamson**
 Location: **26-9S-4E**
 Township: **Crab Orchard**
 Acres: **44.8**
 Date: **6/25/2018**



Maps Provided By:



Area Symbol: IL199, Soil Area Version: 12

Code	Soil Description	Acres	Percent of field	Il. State Productivity Index Legend	Corn Bu/A	Soybeans Bu/A	Wheat Bu/A	Crop productivity index for optimum management
730D	Bethesda gravelly silt loam, 7 to 20 percent slopes	37.26	83.2%					
3382A	Belknap silt loam, 0 to 2 percent slopes, frequently flooded	4.03	9.0%		156	52	63	117
**14C3	Ava silty clay loam, 5 to 10 percent slopes, severely eroded	1.61	3.6%		**100	**33	**41	**74
**10D	Plumfield silty clay loam, 10 to 18 percent slopes	1.13	2.5%		**97	**32	**37	**74
**908D2	Hickory-Kell silt loams, 10 to 18 percent slopes, eroded	0.50	1.1%		**109	**36	**43	**84
**14C2	Ava silt loam, 5 to 10 percent slopes, eroded	0.27	0.6%		**122	**40	**50	**90
Weighted Average					21.2	6.5	8	15.7

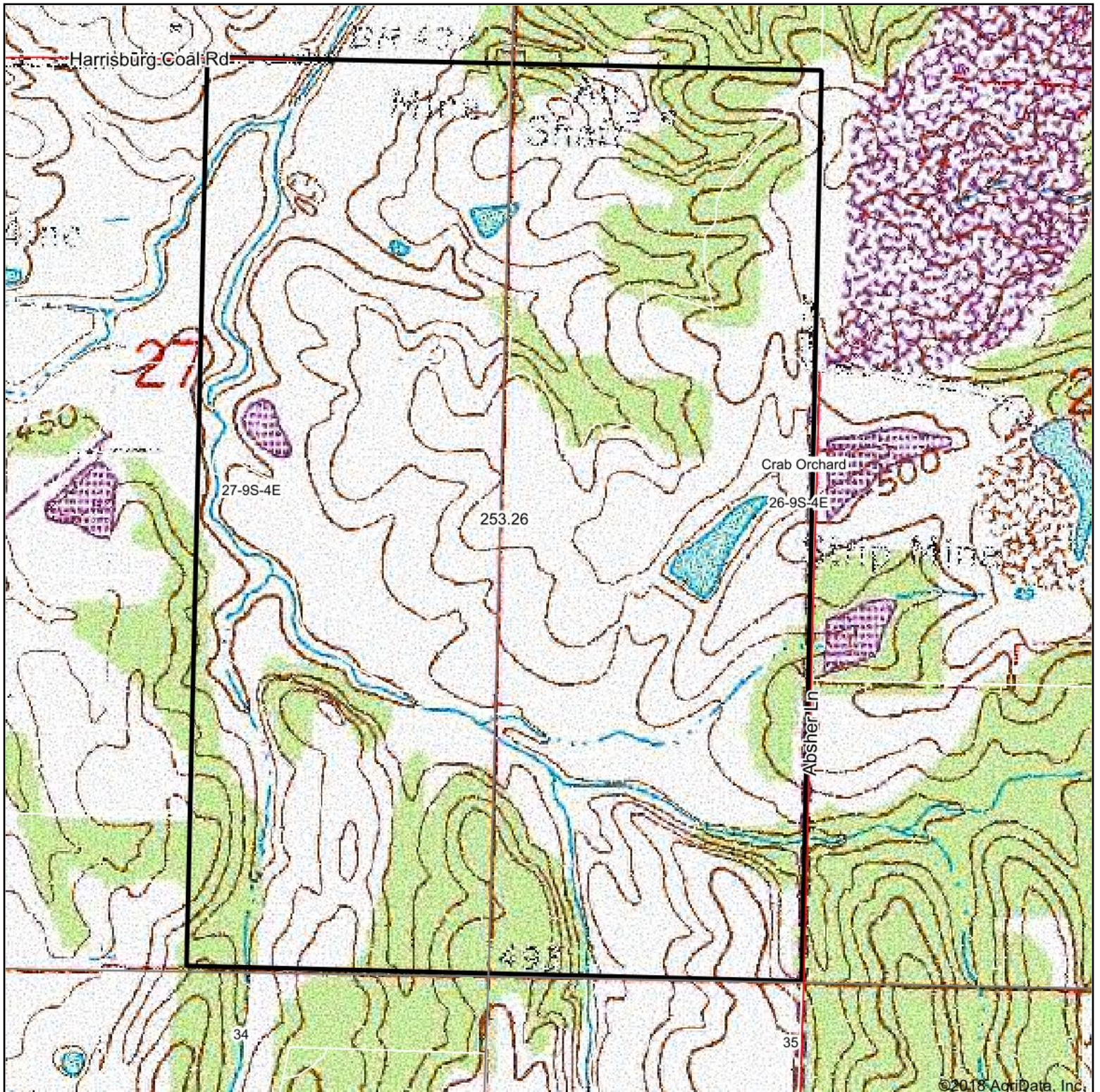
Table: Optimum Crop Productivity Ratings for Illinois Soil by K.R. Olson and J.M. Lang, Office of Research, ACES, University of Illinois at Champaign-Urbana. Version: 1/2/2012 Amended Table S2 B811

Crop yields and productivity indices for optimum management (B811) are maintained at the following NRES web site: <http://soilproductivity.nres.illinois.edu/>

** Indexes adjusted for slope and erosion according to Bulletin 811 Table S3

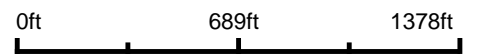
Soils data provided by USDA and NRCS. Soils data provided by University of Illinois at Champaign-Urbana.

Topography Map



©2018 AgriData, Inc.

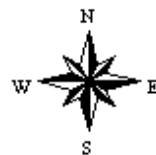
map center: 37° 42' 26.21, -88° 44' 35.94



Maps Provided By:



26-9S-4E
Williamson County
Illinois



6/25/2018