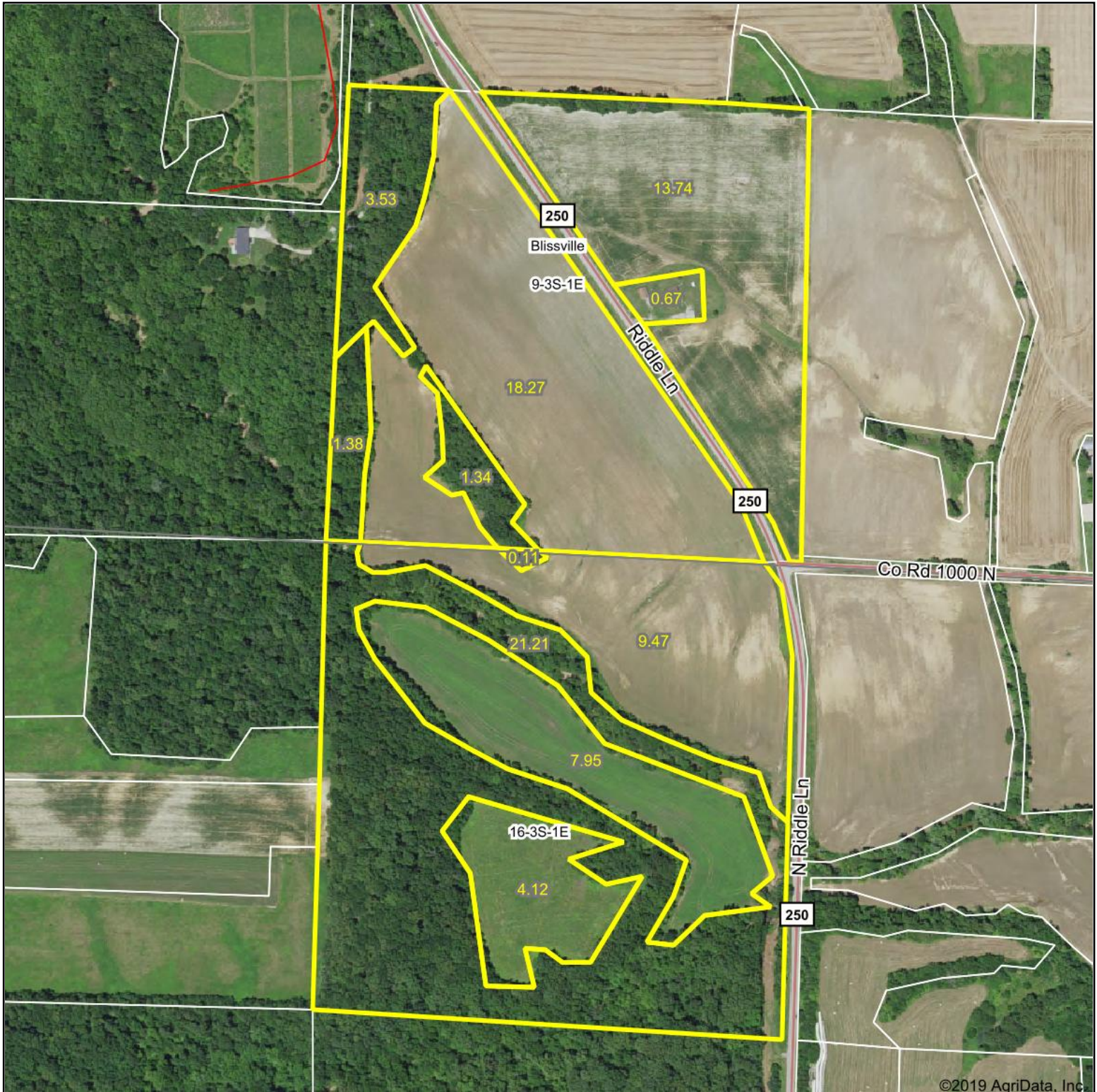


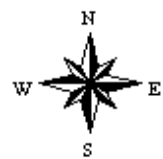
Aerial Map



Map Center: 38° 16' 21.39, -89° 6' 27.39

0ft 453ft 906ft

9-3S-1E
Jefferson County
Illinois



11/22/2019



Maps Provided By:
surety
 CUSTOMIZED ONLINE MAPPING
 © AgriData, Inc. 2019 www.AgriDataInc.com

Field borders provided by Farm Service Agency as of 5/21/2008. Soils data provided by University of Illinois at Champaign-Urbana.



United States
Department of
Agriculture

Jefferson County, Illinois



Common Land Unit

- CRP
- Non-Cropland
- Cropland
- Tract Boundary

Wetland Determination Identifiers

- Restricted Use
- Limited Restrictions
- Exempt from Conservation Compliance Provisions

Tract Cropland Total: 21.52 acres

2019 Program Year

Map Created October 03, 2018

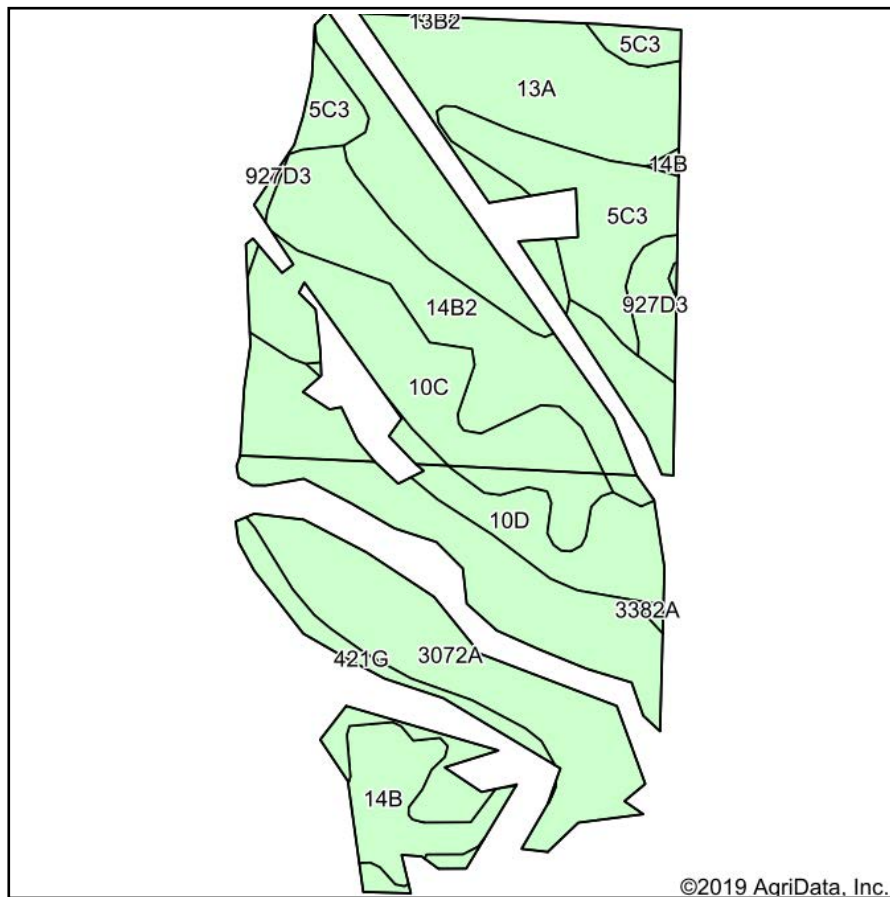
Farm **8896**

Tract **2879**

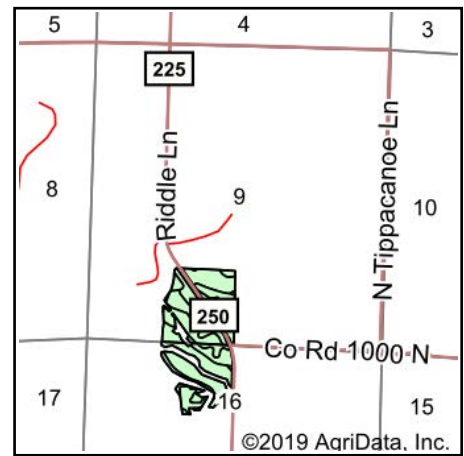
IL081_T2879

United States Department of Agriculture (USDA) Farm Service Agency (FSA) maps are for FSA Program administration only. This map does not represent a legal survey or reflect actual ownership; rather it depicts the information provided directly from the producer and/or National Agricultural Imagery Program (NAIP) imagery. The producer accepts the data 'as is' and assumes all risks associated with its use. USDA-FSA assumes no responsibility for actual or consequential damage incurred as a result of any user's reliance on this data outside FSA Programs. Wetland identifiers do not represent the size, shape, or specific determination of the area. Refer to your original determination (CPA-026 and attached maps) for exact boundaries and determinations or contact USDA Natural Resources Conservation Service (NRCS).

Soils Map



Soils data provided by USDA and NRCS.



State: **Illinois**
 County: **Jefferson**
 Location: **9-3S-1E**
 Township: **Blissville**
 Acres: **53.55**
 Date: **11/22/2019**



Maps Provided By:



Area Symbol: IL081, Soil Area Version: 12								
Code	Soil Description	Acres	Percent of field	Il. State Productivity Index Legend	Corn Bu/A	Soybeans Bu/A	Wheat Bu/A	Crop productivity index for optimum management
3072A	Sharon silt loam, 0 to 2 percent slopes, frequently flooded	13.81	25.8%		164	53	63	122
13A	Bluford silt loam, 0 to 2 percent slopes	10.19	19.0%		136	44	55	101
**14B2	Ava silt loam, 2 to 5 percent slopes, eroded	7.52	14.0%		**126	**41	**51	**93
**10C	Plumfield silty clay loam, 5 to 10 percent slopes	6.55	12.2%		**103	**34	**39	**78
**5C3	Blair silty clay loam, 5 to 10 percent slopes, severely eroded	5.40	10.1%		**102	**33	**41	**77
**10D	Plumfield silty clay loam, 10 to 18 percent slopes	3.29	6.1%		**97	**32	**37	**74
**421G	Kell silt loam, 35 to 60 percent slopes	2.74	5.1%		**60	**20	**23	**45
**14B	Ava silt loam, 2 to 5 percent slopes	2.70	5.0%		**134	**44	**54	**99
**927D3	Blair-Atlas silty clay loams, 10 to 18 percent slopes, severely eroded	1.23	2.3%		**90	**30	**36	**68
3382A	Belknap silt loam, 0 to 2 percent slopes, frequently flooded	0.12	0.2%		156	52	63	117
Weighted Average					127	41.3	49.9	94.7

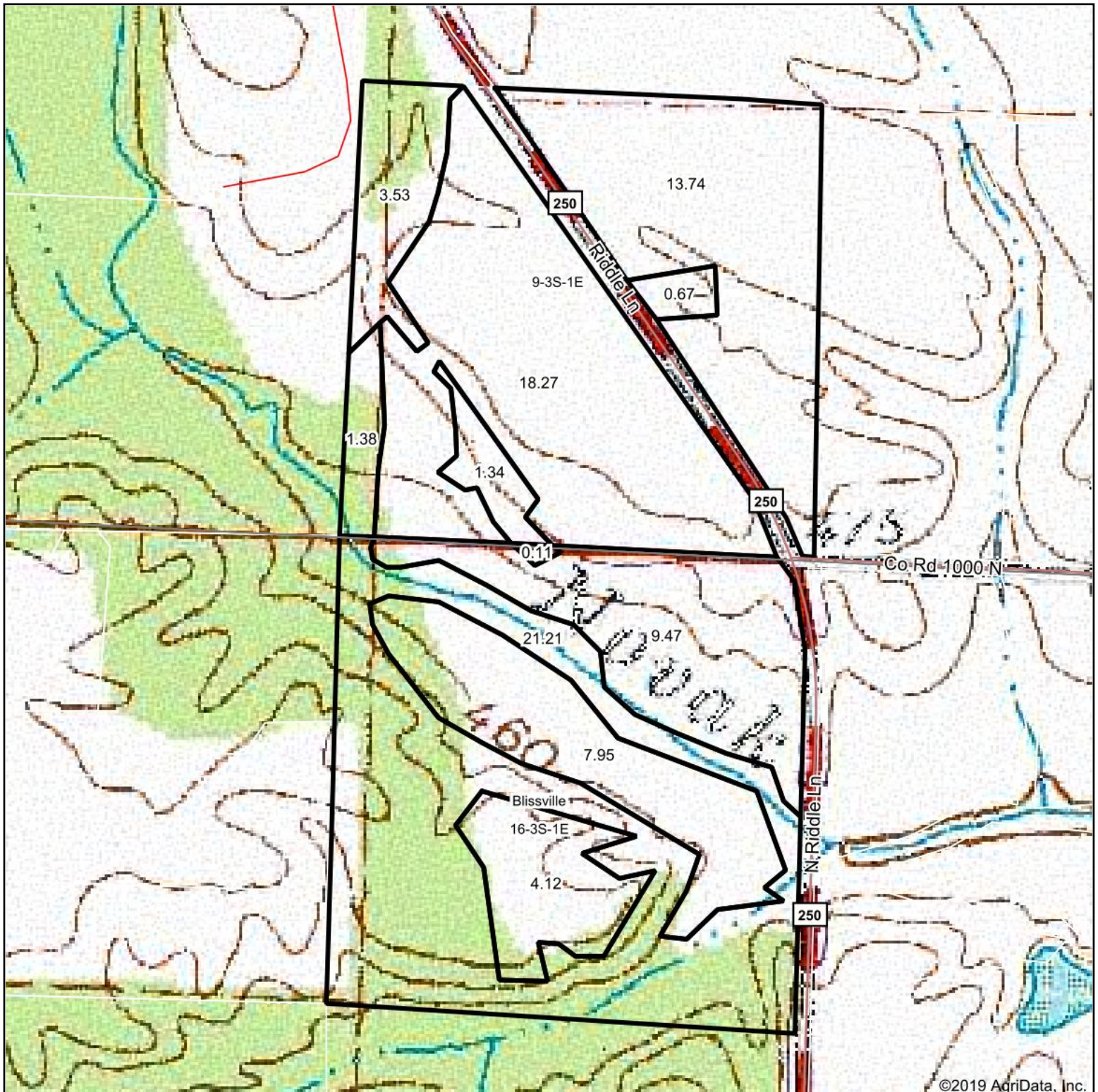
Table: Optimum Crop Productivity Ratings for Illinois Soil by K.R. Olson and J.M. Lang, Office of Research, ACES, University of Illinois at Champaign-Urbana. Version: 1/2/2012 Amended Table S2 B811

Crop yields and productivity indices for optimum management (B811) are maintained at the following NRES web site: <http://soilproductivity.nres.illinois.edu/>

** Indexes adjusted for slope and erosion according to Bulletin 811 Table S3

Soils data provided by USDA and NRCS. Soils data provided by University of Illinois at Champaign-Urbana.

Topography Map

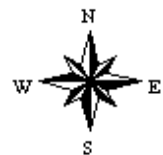


©2019 AgriData, Inc.

map center: 38° 16' 21.21, -89° 6' 27.86

0ft 456ft 912ft

16-3S-1E
Jefferson County
Illinois



12/3/2019



Maps Provided By:



© AgriData, Inc. 2019

www.AgriDataInc.com

Field borders provided by Farm Service Agency as of 5/21/2008. Soils data provided by University of Illinois at Champaign-Urbana.