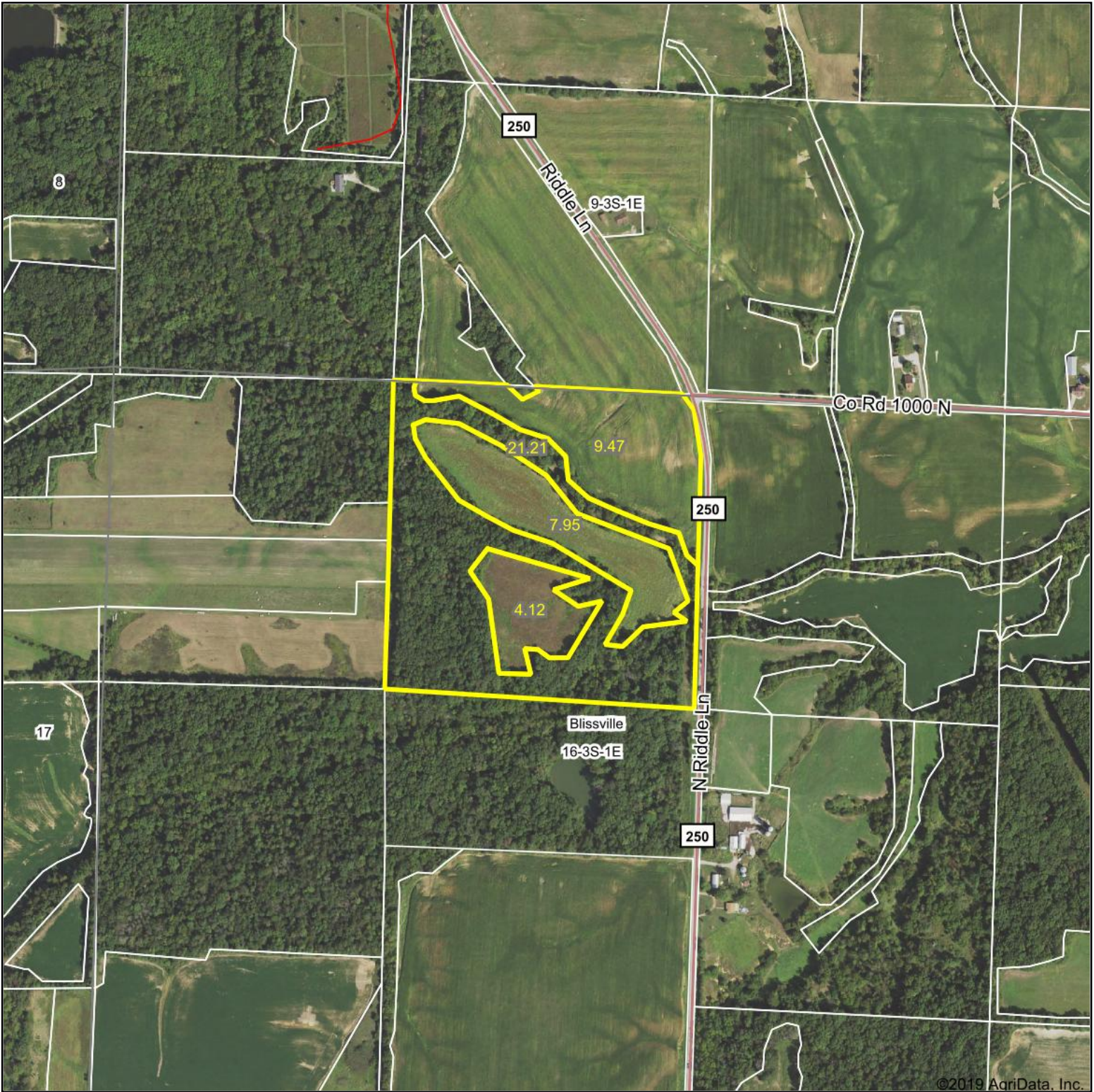


Aerial Map



Map Center: 38° 16' 14.32, -89° 6' 26.85



16-3S-1E
Jefferson County
Illinois



2/18/2020



Maps Provided By:



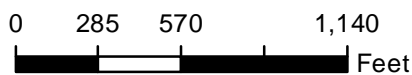
© AgriData, Inc. 2019 www.AgriDataInc.com

Field borders provided by Farm Service Agency as of 5/21/2008.



Common Land Unit

- CRP
- Tract Boundary
- Non-Cropland
- Cropland



2019 Program Year
Map Created October 03, 2018

Wetland Determination Identifiers

- Restricted Use
- Limited Restrictions
- Exempt from Conservation
- Compliance Provisions

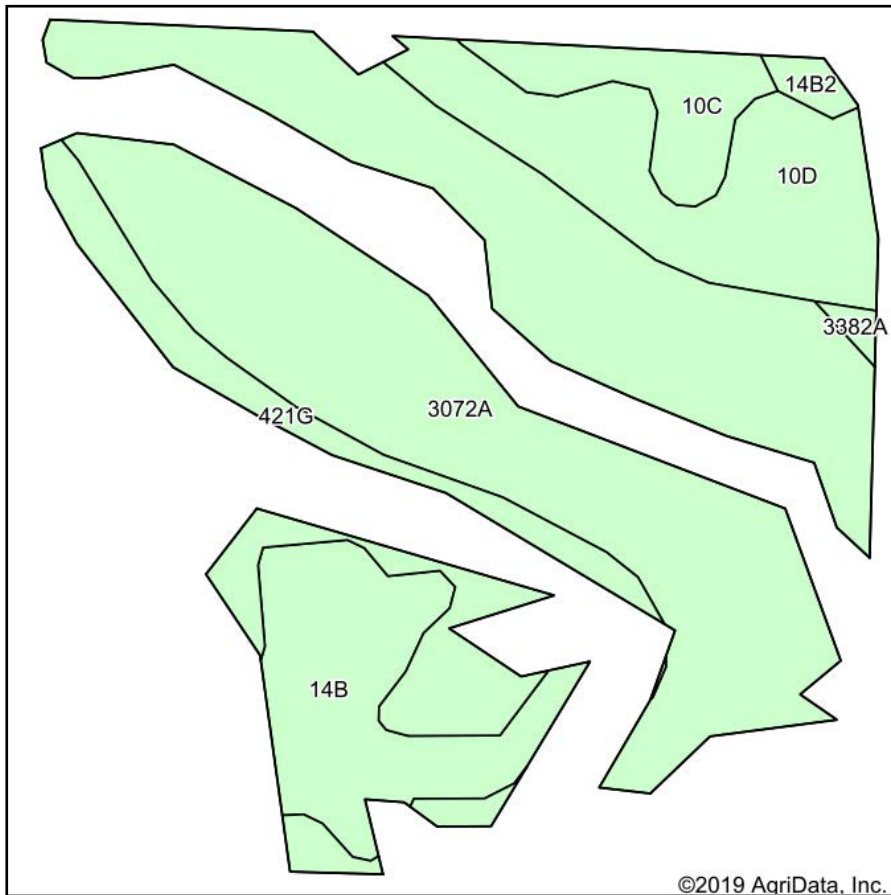
Tract Cropland Total: 21.52 acres

Farm 8896
Tract 2879

IL081_T2879

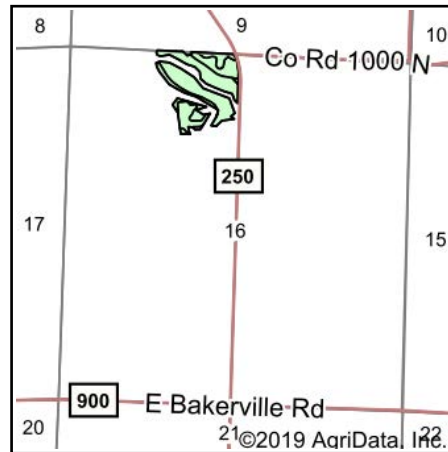
United States Department of Agriculture (USDA) Farm Service Agency (FSA) maps are for FSA Program administration only. This map does not represent a legal survey or reflect actual ownership; rather it depicts the information provided directly from the producer and/or National Agricultural Imagery Program (NAIP) imagery. The producer accepts the data 'as is' and assumes all risks associated with its use. USDA-FSA assumes no responsibility for actual or consequential damage incurred as a result of any user's reliance on this data outside FSA Programs. Wetland identifiers do not represent the size, shape, or specific determination of the area. Refer to your original determination (CPA-026 and attached maps) for exact boundaries and determinations or contact USDA Natural Resources Conservation Service (NRCS).

Soils Map



Soils data provided by USDA and NRCS.

©2019 AgriData, Inc.



State: **Illinois**
 County: **Jefferson**
 Location: **16-3S-1E**
 Township: **Blissville**
 Acres: **21.54**
 Date: **2/18/2020**

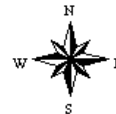


Maps Provided By:



© AgriData, Inc. 2019

www.AgriDataInc.com



Area Symbol: IL081, Soil Area Version: 12								
Code	Soil Description	Acres	Percent of field	Il. State Productivity Index Legend	Corn Bu/A	Soybeans Bu/A	Wheat Bu/A	Crop productivity index for optimum management
3072A	Sharon silt loam, 0 to 2 percent slopes, frequently flooded	11.82	54.9%		164	53	63	122
**10D	Plumfield silty clay loam, 10 to 18 percent slopes	3.03	14.1%		**97	**32	**37	**74
**421G	Kell silt loam, 35 to 60 percent slopes	2.74	12.7%		**60	**20	**23	**45
**14B	Ava silt loam, 2 to 5 percent slopes	2.61	12.1%		**134	**44	**54	**99
**10C	Plumfield silty clay loam, 5 to 10 percent slopes	1.07	5.0%		**103	**34	**39	**78
**14B2	Ava silt loam, 2 to 5 percent slopes, eroded	0.18	0.8%		**126	**41	**51	**93
3382A	Belknap silt loam, 0 to 2 percent slopes, frequently flooded	0.09	0.4%		156	52	63	117
Weighted Average					134.3	43.7	51.9	100.2

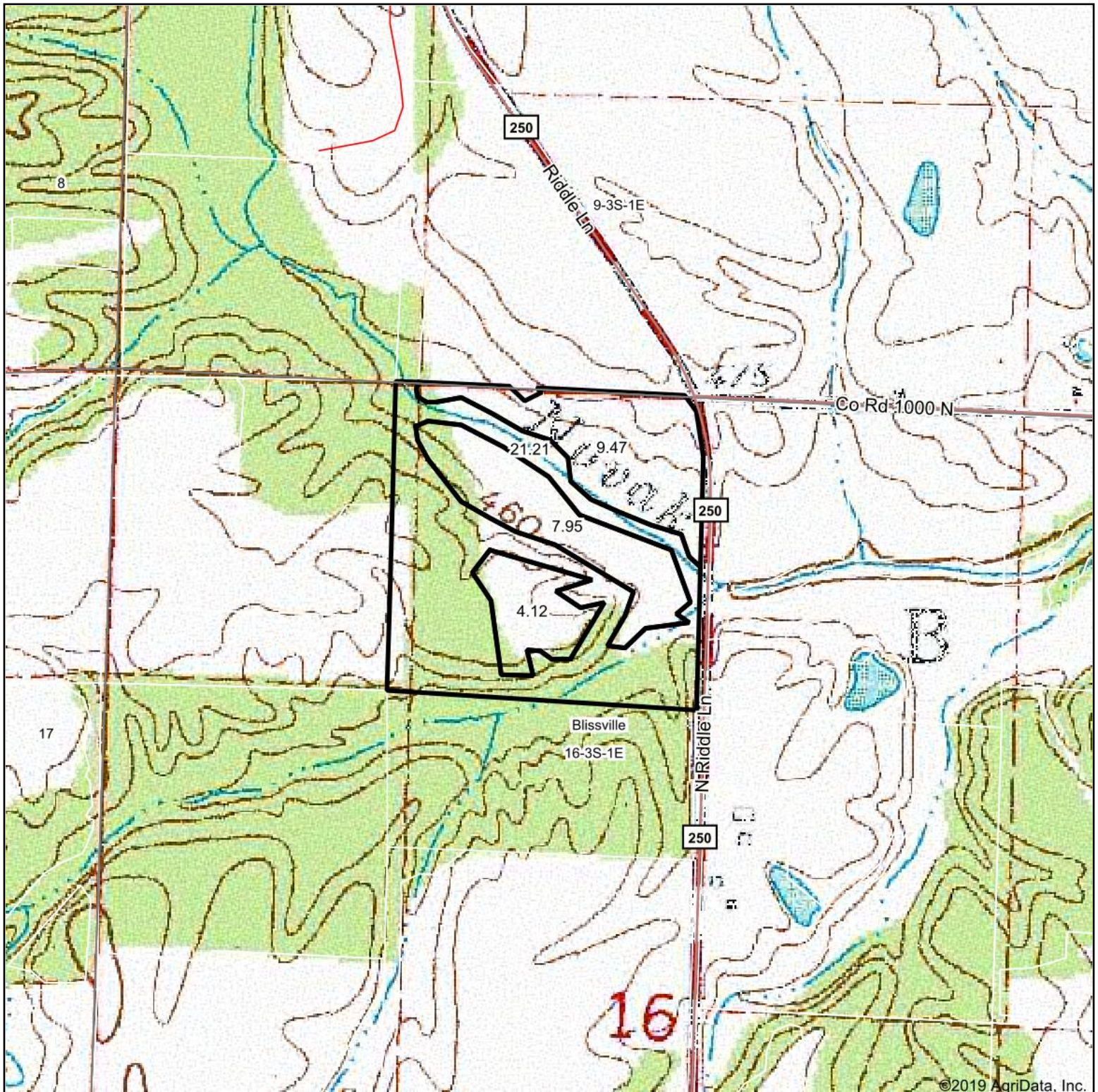
Table: Optimum Crop Productivity Ratings for Illinois Soil by K.R. Olson and J.M. Lang, Office of Research, ACES, University of Illinois at Champaign-Urbana. Version: 1/2/2012 Amended Table S2 B811

Crop yields and productivity indices for optimum management (B811) are maintained at the following NRES web site: <http://soilproductivity.nres.illinois.edu/>

** Indexes adjusted for slope and erosion according to Bulletin 811 Table S3

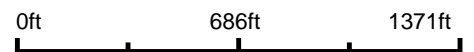
Soils data provided by USDA and NRCS. Soils data provided by University of Illinois at Champaign-Urbana.

Topography Map



©2019 AgriData, Inc.

map center: 38° 16' 14.32, -89° 6' 26.85

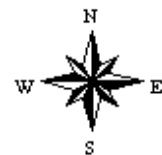


Maps Provided By:



© AgriData, Inc. 2019 www.AgriDataInc.com

16-3S-1E
Jefferson County
Illinois



2/18/2020