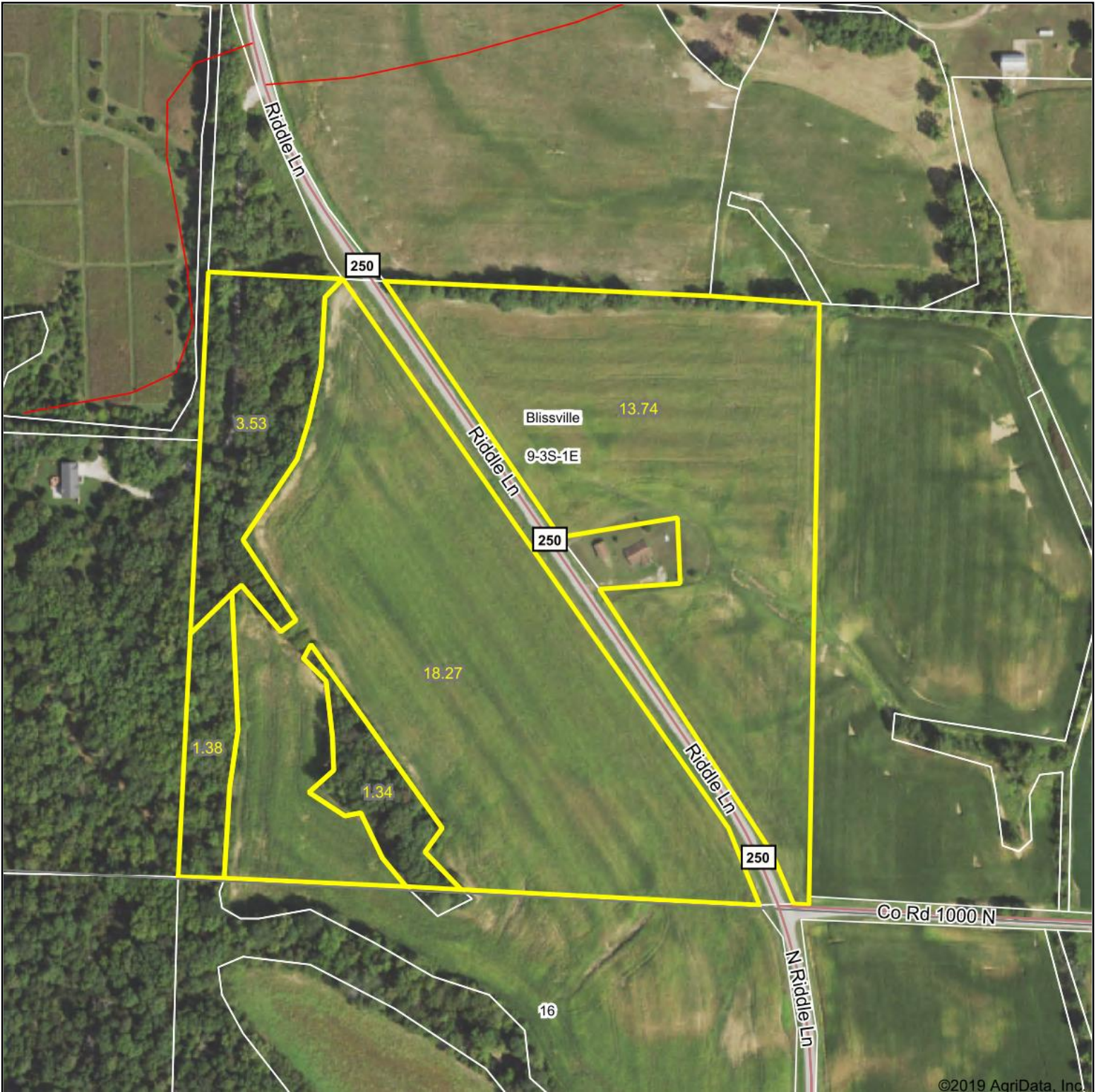
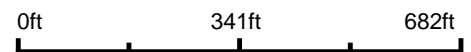


Aerial Map

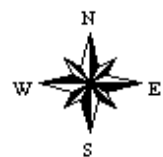


©2019 AgriData, Inc.

Map Center: 38° 16' 28.74, -89° 6' 25.58



9-3S-1E
Jefferson County
Illinois

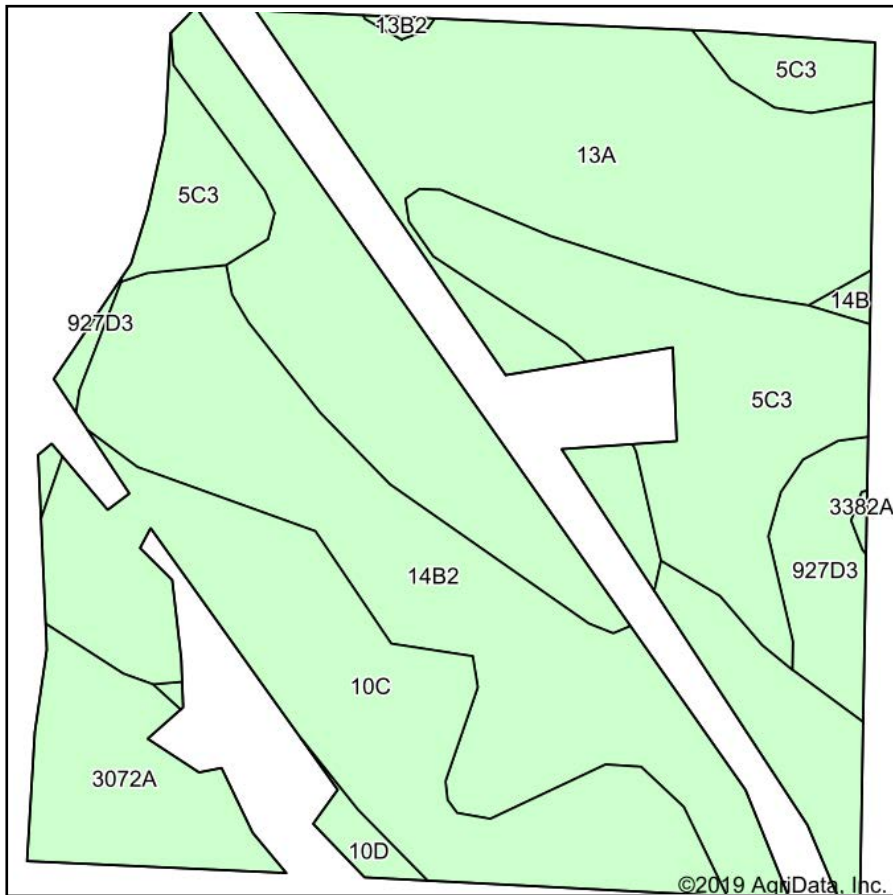


2/18/2020

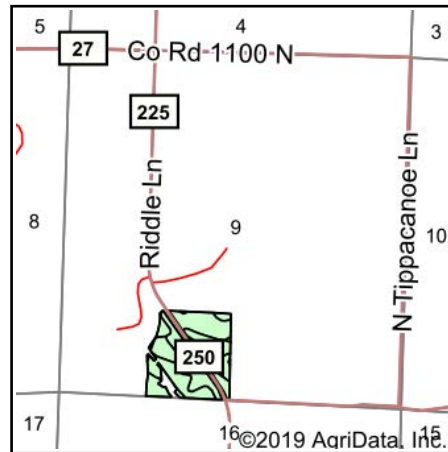
Maps Provided By:
 **surety**
CUSTOMIZED ONLINE MAPPING
© AgriData, Inc. 2019 www.AgriDataInc.com

Field borders provided by Farm Service Agency as of 5/21/2008.

Soils Map



Soils data provided by USDA and NRCS.



State: **Illinois**
 County: **Jefferson**
 Location: **9-3S-1E**
 Township: **Blissville**
 Acres: **32.01**
 Date: **2/18/2020**



Area Symbol: IL081, Soil Area Version: 12								
Code	Soil Description	Acres	Percent of field	Il. State Productivity Index Legend	Corn Bu/A	Soybeans Bu/A	Wheat Bu/A	Crop productivity index for optimum management
13A	Bluford silt loam, 0 to 2 percent slopes	10.28	32.1%		136	44	55	101
**14B2	Ava silt loam, 2 to 5 percent slopes, eroded	7.34	22.9%		**126	**41	**51	**93
**10C	Plumfield silty clay loam, 5 to 10 percent slopes	5.48	17.1%		**103	**34	**39	**78
**5C3	Blair silty clay loam, 5 to 10 percent slopes, severely eroded	5.40	16.9%		**102	**33	**41	**77
3072A	Sharon silt loam, 0 to 2 percent slopes, frequently flooded	1.92	6.0%		164	53	63	122
**927D3	Blair-Atlas silty clay loams, 10 to 18 percent slopes, severely eroded	1.23	3.8%		**90	**30	**36	**68
**10D	Plumfield silty clay loam, 10 to 18 percent slopes	0.27	0.8%		**97	**32	**37	**74
**14B	Ava silt loam, 2 to 5 percent slopes	0.09	0.3%		**134	**44	**54	**99
Weighted Average					121.9	39.6	48.6	90.9

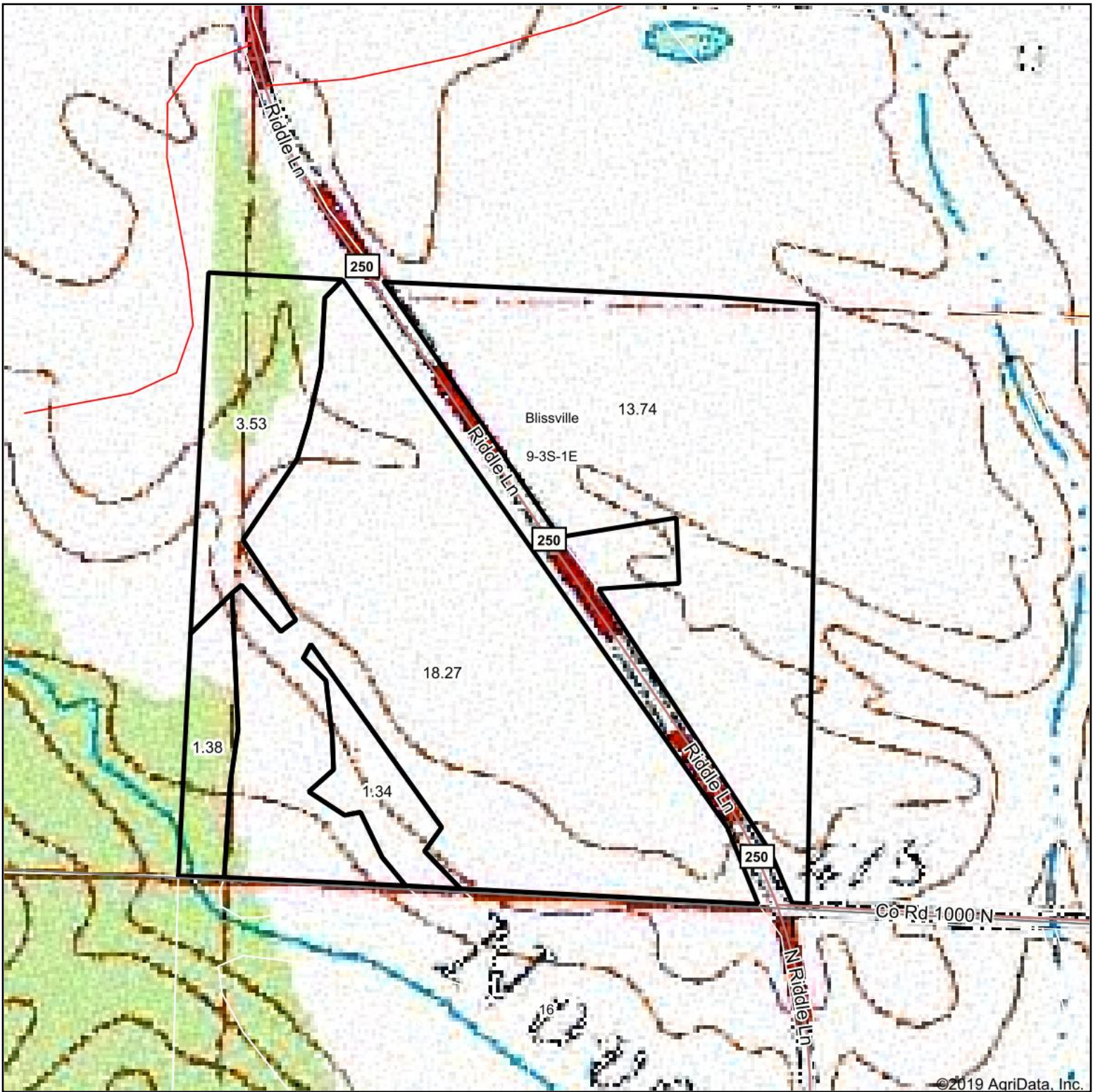
Table: Optimum Crop Productivity Ratings for Illinois Soil by K.R. Olson and J.M. Lang, Office of Research, ACES, University of Illinois at Champaign-Urbana. Version: 1/2/2012 Amended Table S2 B811

Crop yields and productivity indices for optimum management (B811) are maintained at the following NRES web site: <http://soilproductivity.nres.illinois.edu/>

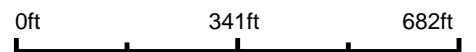
** Indexes adjusted for slope and erosion according to Bulletin 811 Table S3

Soils data provided by USDA and NRCS. Soils data provided by University of Illinois at Champaign-Urbana.

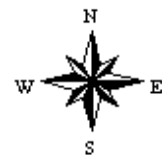
Topography Map



map center: 38° 16' 28.74, -89° 6' 25.58



9-3S-1E
Jefferson County
Illinois



2/18/2020



Maps Provided By:



© AgriData, Inc. 2019

www.AgridataInc.com