

Aerial Map



©2019 AgriData, Inc.

Map Center: 38° 52' 17.42, -88° 30' 56.48



15-5N-6E
Clay County
Illinois



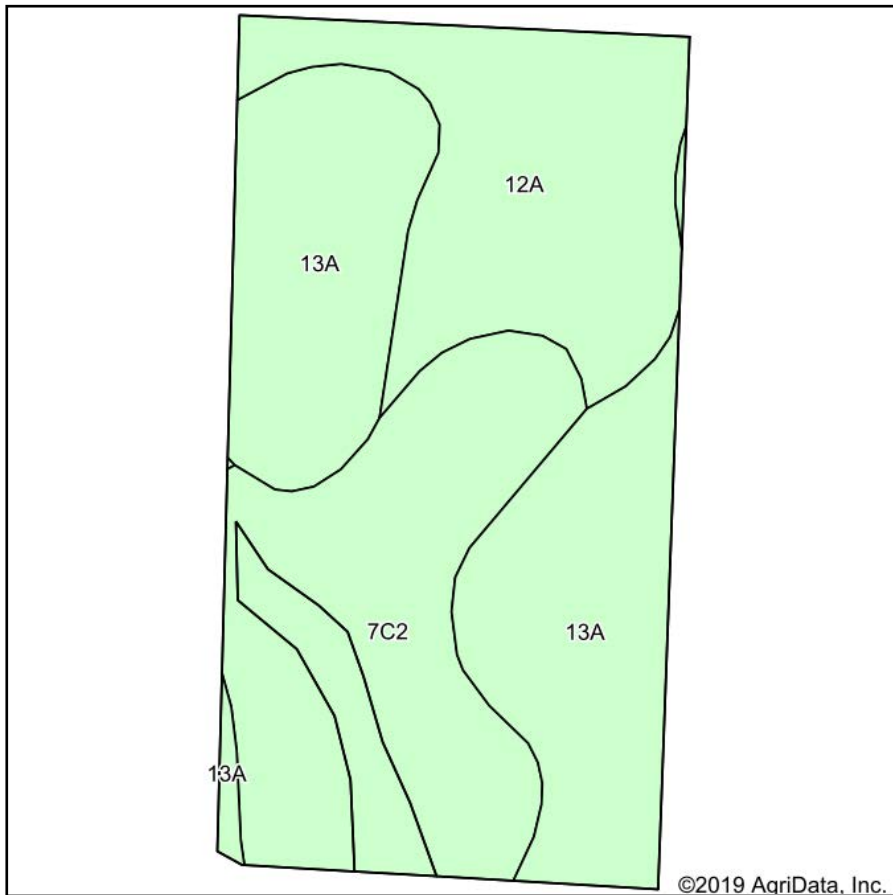
2/3/2020



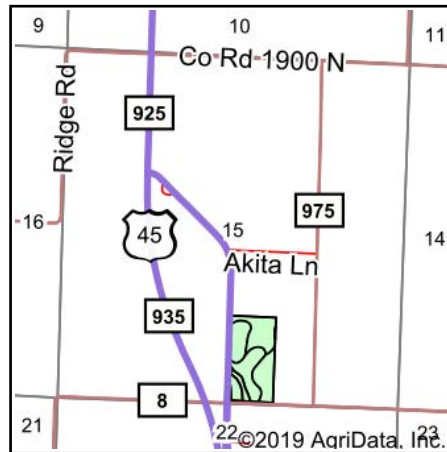
Maps Provided By:
surety
CUSTOMIZED ONLINE MAPPING
© AgriData, Inc. 2019 www.AgriDataInc.com

Field borders provided by Farm Service Agency as of 5/21/2008.

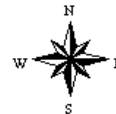
Soils Map



Soils data provided by USDA and NRCS.



State: **Illinois**
 County: **Clay**
 Location: **15-5N-6E**
 Township: **Blair**
 Acres: **20.65**
 Date: **2/3/2020**



Area Symbol: IL025, Soil Area Version: 13									
Code	Soil Description	Acres	Percent of field	Il. State Productivity Index Legend	Corn Bu/A	Soybeans Bu/A	Wheat Bu/A	Grass-legume e hay, T/A	Crop productivity index for optimum management
13A	Bluford silt loam, 0 to 2 percent slopes	8.27	40.0%		136	44	55	3.39	101
**7C2	Atlas silt loam, 5 to 10 percent slopes, eroded	7.04	34.1%		**105	**37	**41	**3.16	**81
12A	Wynoose silt loam, 0 to 2 percent slopes	5.34	25.9%		128	42	51	4.26	97
Weighted Average					123.4	41.1	49.2	3.54	93.1

Table: Optimum Crop Productivity Ratings for Illinois Soil by K.R. Olson and J.M. Lang, Office of Research, ACES, University of Illinois at Champaign-Urbana. Version: 1/2/2012 Amended Table S2 B811

Crop yields and productivity indices for optimum management (B811) are maintained at the following NRES web site: <http://soilproductivity.nres.illinois.edu/>

** Indexes adjusted for slope and erosion according to Bulletin 811 Table S3

e Soils in the well drained group were not rated for grass-legume and are shown with a zero "0".

*c: Using Capabilities Class Dominant Condition Aggregation Method

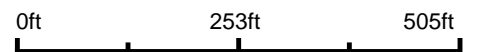
Soils data provided by USDA and NRCS. Soils data provided by University of Illinois at Champaign-Urbana.

Topography Map

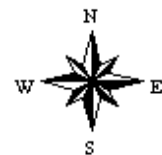


©2019 AgriData, Inc.

map center: 38° 52' 17.42, -88° 30' 56.48



15-5N-6E
Clay County
Illinois



2/3/2020



Maps Provided By:



© AgriData, Inc. 2019

www.AgridataInc.com

Field borders provided by Farm Service Agency as of 5/21/2008.