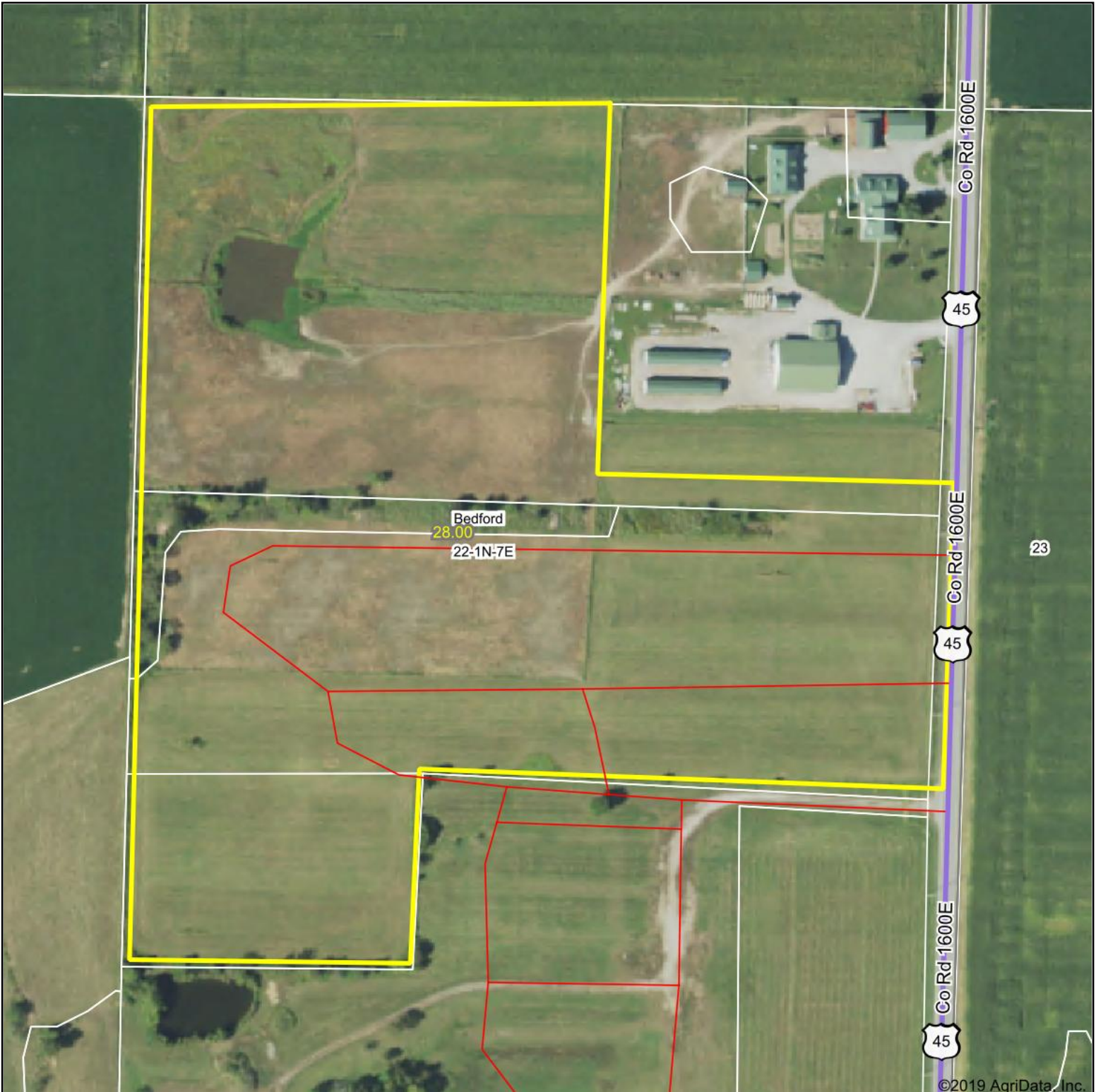


Aerial Map

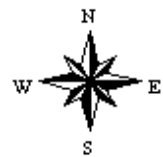


©2019 AgriData, Inc.

Map Center: 38° 30' 34.53, -88° 24' 17.4



22-1N-7E
Wayne County
Illinois



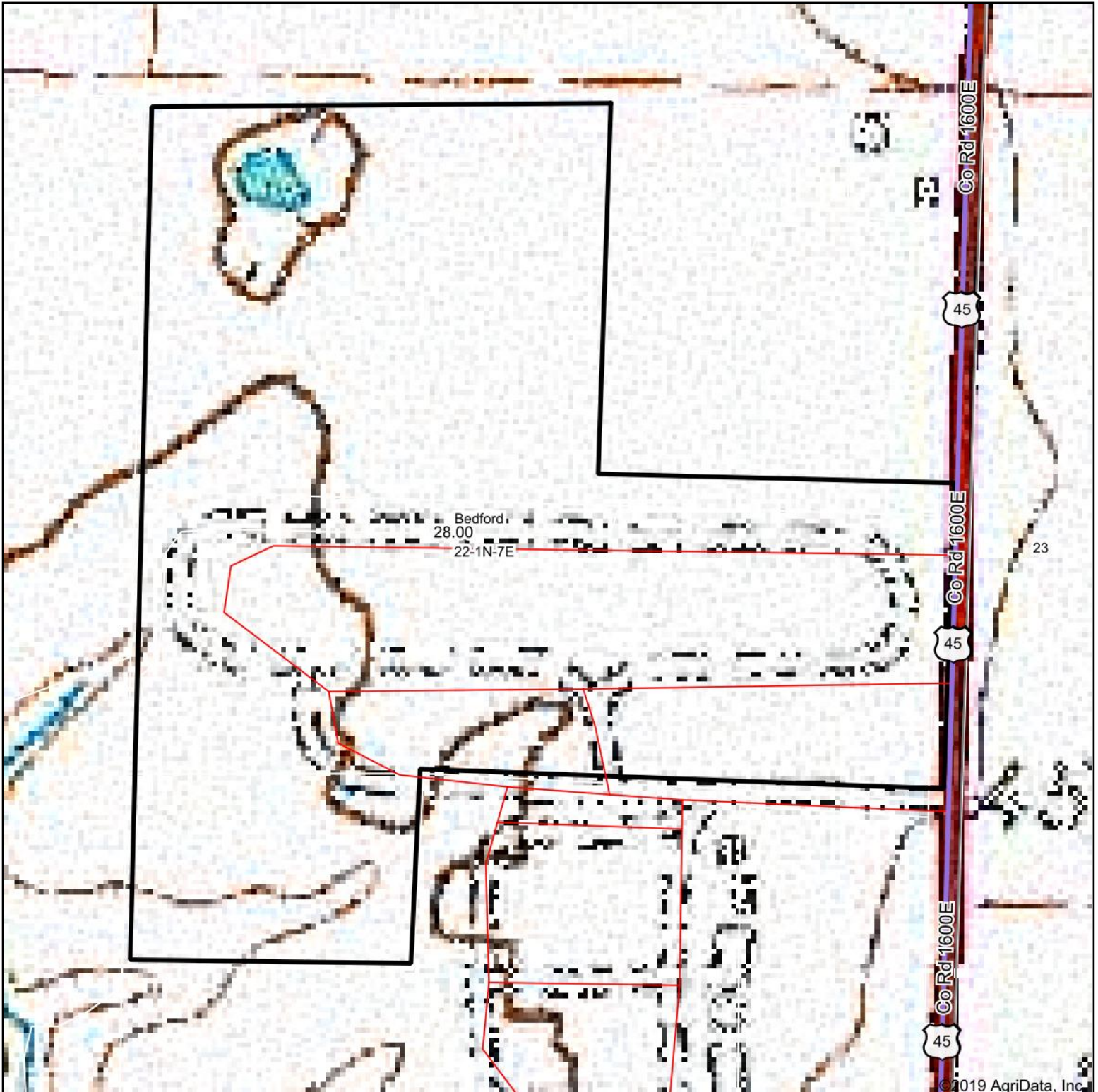
Maps Provided By:
 surety
CUSTOMIZED ONLINE MAPPING

© AgriData, Inc. 2019 www.AgriDataInc.com

2/15/2020

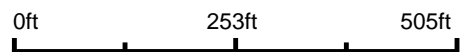
Field borders provided by Farm Service Agency as of 5/21/2008.

Topography Map

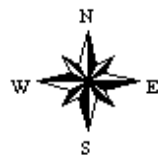


© 2019 AgriData, Inc.

map center: 38° 30' 34.53, -88° 24' 17.4



22-1N-7E
Wayne County
Illinois



2/15/2020



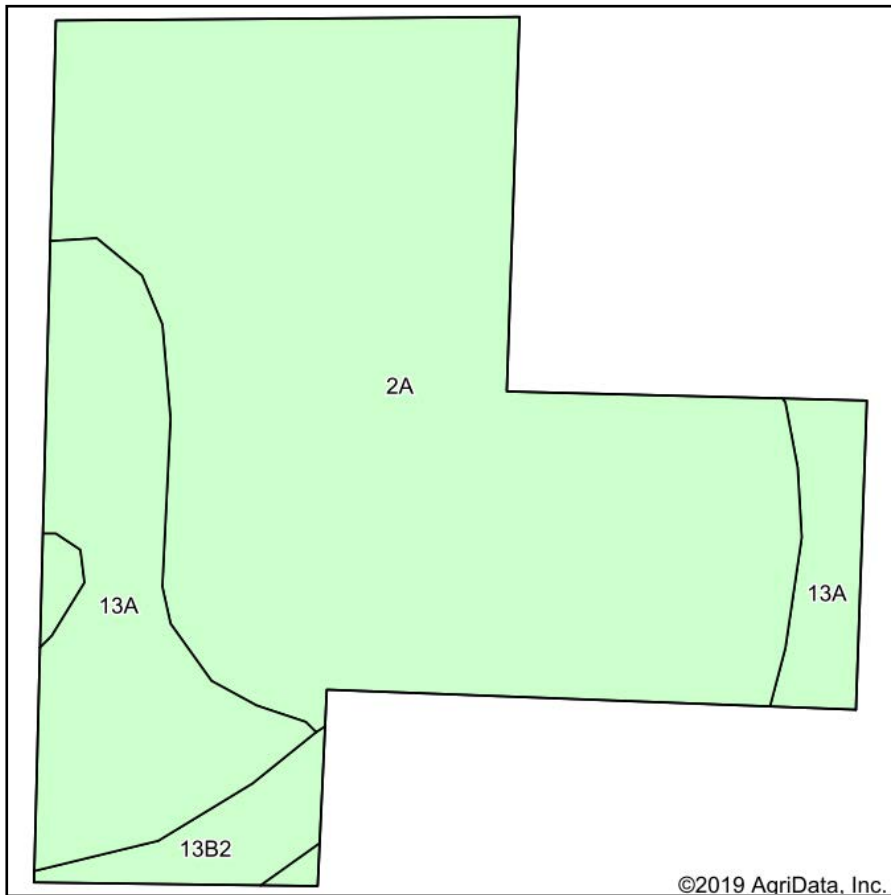
Maps Provided By:



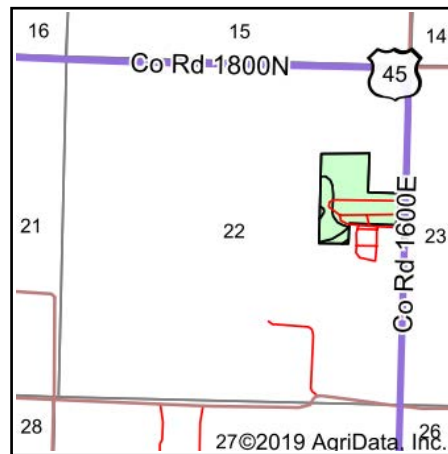
© AgriData, Inc. 2019

www.AgridataInc.com

Soils Map



Soils data provided by USDA and NRCS.



State: **Illinois**
 County: **Wayne**
 Location: **22-1N-7E**
 Township: **Bedford**
 Acres: **28**
 Date: **2/15/2020**



Area Symbol: IL191. Soil Area Version: 17									
Code	Soil Description	Acres	Percent of field	Il. State Productivity Index Legend	Corn Bu/A	Soybeans Bu/A	Wheat Bu/A	Grass-legume e hay, T/A	Crop productivity index for optimum management
2A	Cisne silt loam, 0 to 2 percent slopes	20.38	72.8%		149	46	59	4.64	109
13A	Bluford silt loam, 0 to 2 percent slopes	6.37	22.8%		136	44	55	3.39	101
**13B2	Bluford silt loam, 2 to 5 percent slopes, eroded	1.25	4.5%		**129	**42	**52	**3.22	**96
Weighted Average					145.1	45.4	57.8	4.29	106.6

Table: Optimum Crop Productivity Ratings for Illinois Soil by K.R. Olson and J.M. Lang, Office of Research, ACES, University of Illinois at Champaign-Urbana. Version: 1/2/2012 Amended Table S2 B811

Crop yields and productivity indices for optimum management (B811) are maintained at the following NRES web site: <http://soilproductivity.nres.illinois.edu/>

** Indexes adjusted for slope and erosion according to Bulletin 811 Table S3

e Soils in the well drained group were not rated for grass-legume and are shown with a zero "0".

*c: Using Capabilities Class Dominant Condition Aggregation Method

Soils data provided by USDA and NRCS. Soils data provided by University of Illinois at Champaign-Urbana.