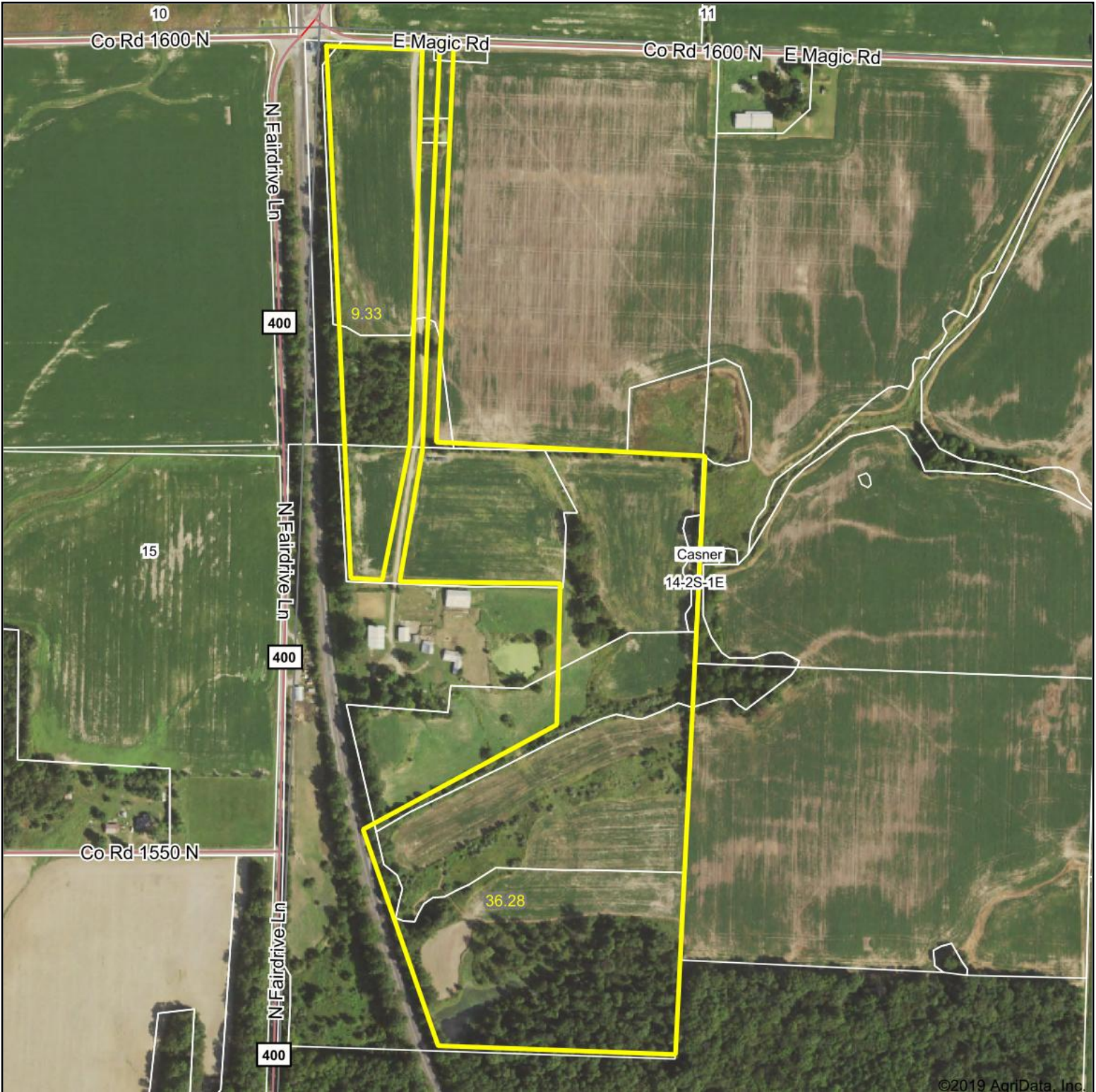


# Aerial Map

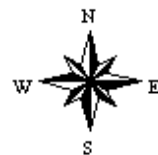


©2019 AgriData, Inc.

Map Center: 38° 21' 13.37, -89° 4' 6.46



**14-2S-1E**  
**Jefferson County**  
**Illinois**



2/14/2020



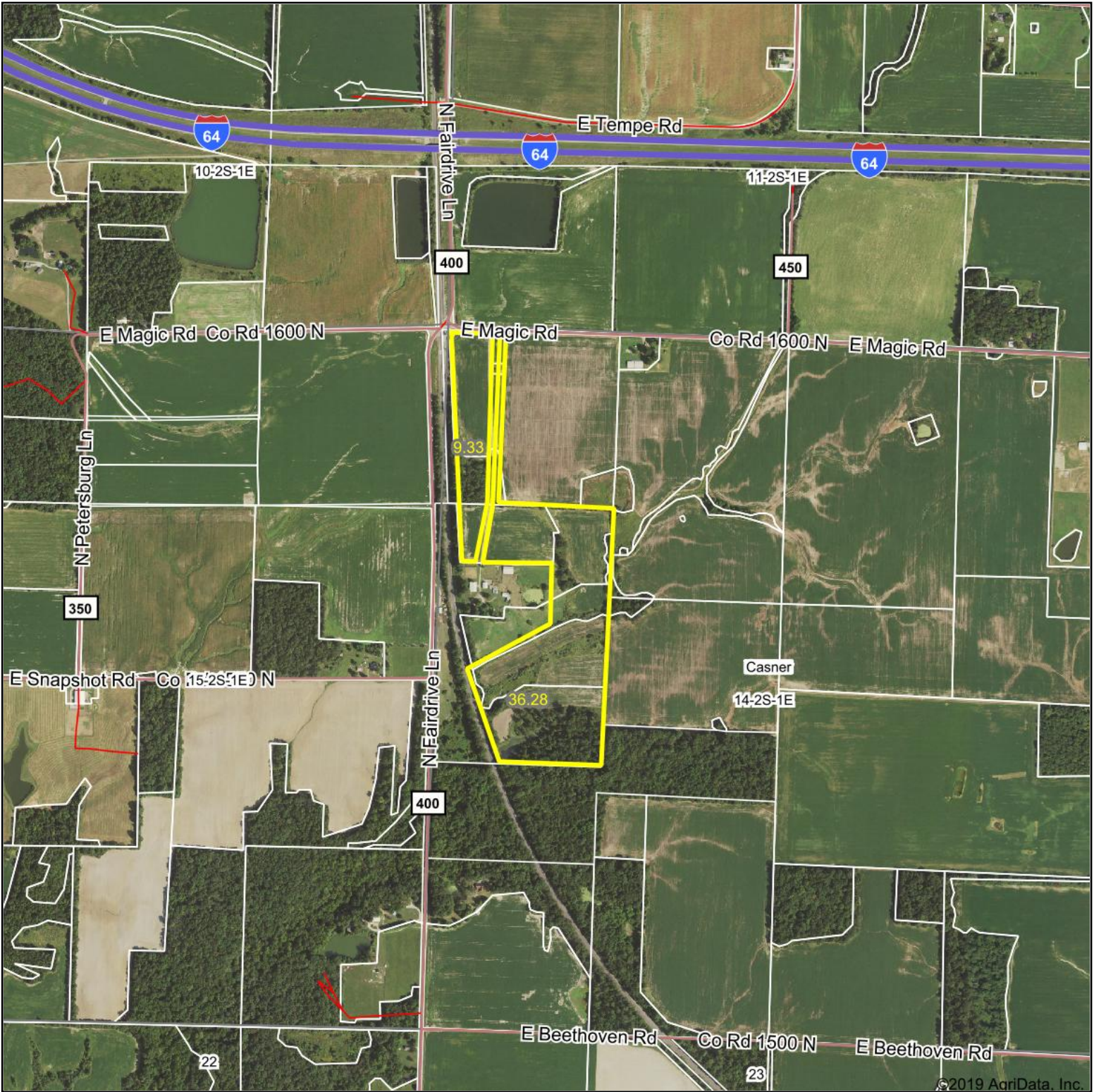
Maps Provided By:



© AgriData, Inc. 2019 www.AgriDataInc.com

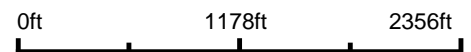
Field borders provided by Farm Service Agency as of 5/21/2008.

# Aerial Map

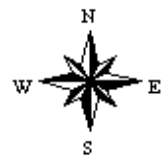


©2019 AgriData, Inc.

Map Center: 38° 21' 13.42, -89° 4' 6.46



**14-2S-1E**  
**Jefferson County**  
**Illinois**



2/14/2020



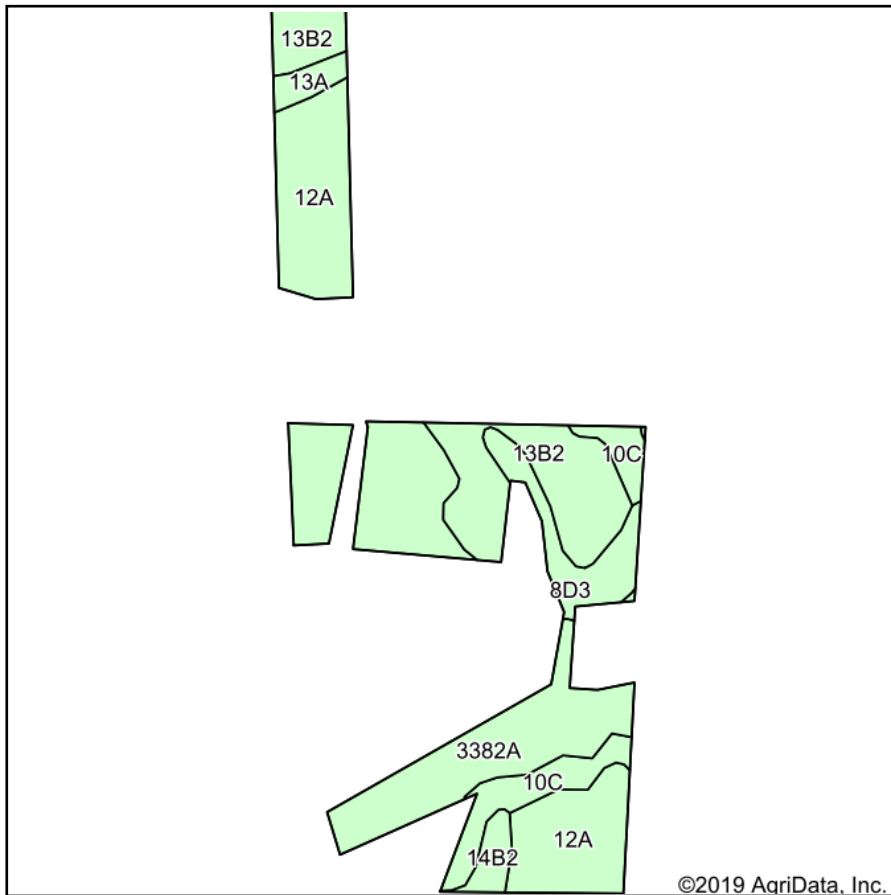
Maps Provided By:



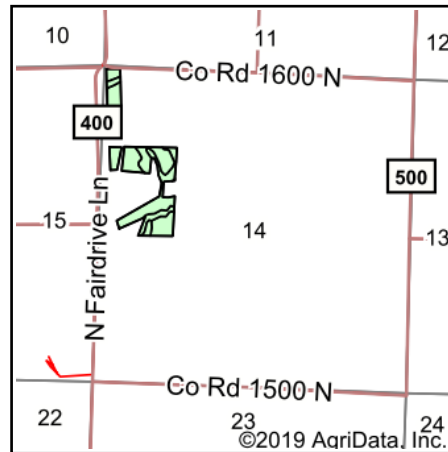
© AgriData, Inc. 2019 www.AgriDataInc.com

Field borders provided by Farm Service Agency as of 5/21/2008.

# Soils Map



Soils data provided by USDA and NRCS.



State: **Illinois**  
 County: **Jefferson**  
 Location: **14-2S-1E**  
 Township: **Casner**  
 Acres: **25.03**  
 Date: **2/14/2020**



Area Symbol: IL081, Soil Area Version: 12									
Code	Soil Description	Acres	Percent of field	Il. State Productivity Index Legend	Corn Bu/A	Soybeans Bu/A	Wheat Bu/A	Grass-legume e hay, T/A	Crop productivity index for optimum management
12A	Wynoose silt loam, 0 to 2 percent slopes	10.45	41.7%		128	42	51	4.26	97
**13B2	Bluford silt loam, 2 to 5 percent slopes, eroded	4.91	19.6%		**129	**42	**52	**3.22	**96
3382A	Belknap silt loam, 0 to 2 percent slopes, frequently flooded	4.57	18.3%		156	52	63	4.89	117
**10C	Plumfield silty clay loam, 5 to 10 percent slopes	2.16	8.6%		**103	**34	**39	**3.37	**78
**8D3	Hickory clay loam, 10 to 18 percent slopes, severely eroded	1.80	7.2%		**98	**33	**40	0.00	**75
**14B2	Ava silt loam, 2 to 5 percent slopes, eroded	0.60	2.4%		**126	**41	**51	0.00	**93
13A	Bluford silt loam, 0 to 2 percent slopes	0.54	2.2%		136	44	55	3.39	101
<b>Weighted Average</b>					<b>129.1</b>	<b>42.5</b>	<b>51.6</b>	<b>3.67</b>	<b>97.2</b>

**Table: Optimum Crop Productivity Ratings for Illinois Soil by K.R. Olson and J.M. Lang, Office of Research, ACES, University of Illinois at Champaign-Urbana.** Version: 1/2/2012 Amended Table S2 B811

Crop yields and productivity indices for optimum management (B811) are maintained at the following NRES web site: <http://soilproductivity.nres.illinois.edu/>

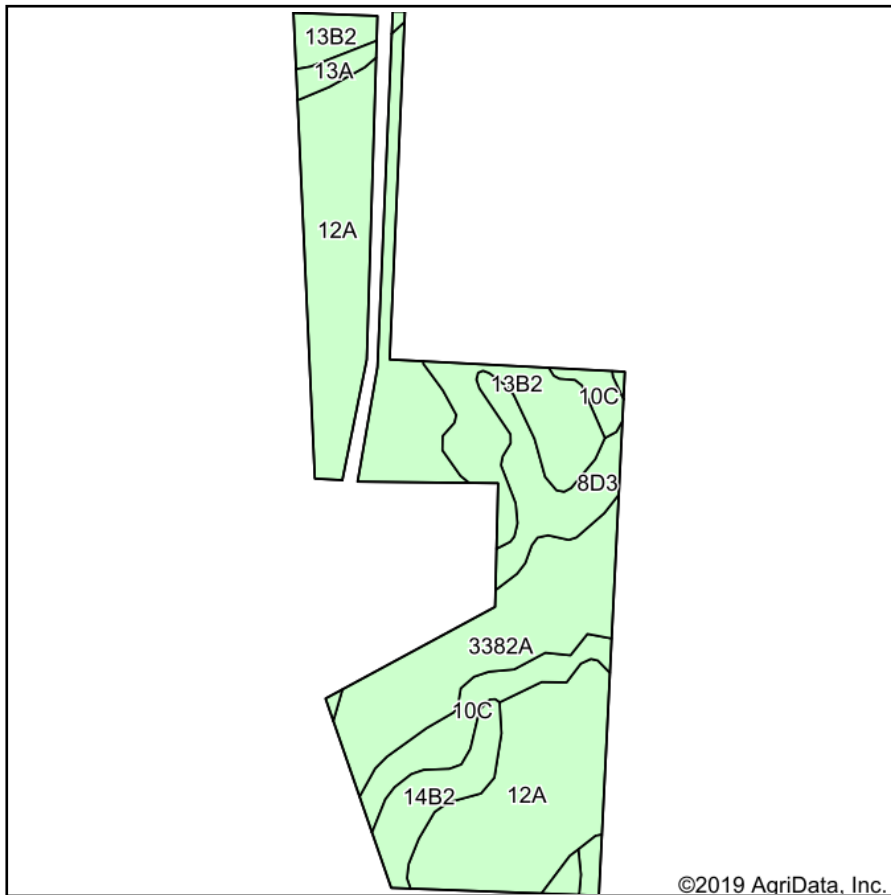
\*\* Indexes adjusted for slope and erosion according to Bulletin 811 Table S3

e Soils in the well drained group were not rated for grass-legume and are shown with a zero "0".

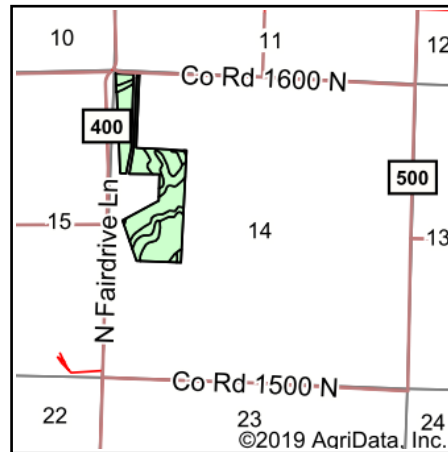
\*c: Using Capabilities Class Dominant Condition Aggregation Method

Soils data provided by USDA and NRCS. Soils data provided by University of Illinois at Champaign-Urbana.

# Soils Map



Soils data provided by USDA and NRCS.



State: **Illinois**  
 County: **Jefferson**  
 Location: **14-2S-1E**  
 Township: **Casner**  
 Acres: **45.61**  
 Date: **2/14/2020**



Maps Provided By:  
  
 © AgriData, Inc. 2019 [www.AgriDataInc.com](http://www.AgriDataInc.com)



Area Symbol: IL081, Soil Area Version: 12									
Code	Soil Description	Acres	Percent of field	Il. State Productivity Index Legend	Corn Bu/A	Soybeans Bu/A	Wheat Bu/A	Grass-legume e hay, T/A	Crop productivity index for optimum management
12A	Wynoose silt loam, 0 to 2 percent slopes	20.72	45.4%		128	42	51	4.26	97
3382A	Belknap silt loam, 0 to 2 percent slopes, frequently flooded	8.26	18.1%		156	52	63	4.89	117
**13B2	Bluford silt loam, 2 to 5 percent slopes, eroded	5.75	12.6%		**129	**42	**52	**3.22	**96
**10C	Plumfield silty clay loam, 5 to 10 percent slopes	3.95	8.7%		**103	**34	**39	**3.37	**78
**8D3	Hickory clay loam, 10 to 18 percent slopes, severely eroded	3.47	7.6%		**98	**33	**40	0.00	**75
**14B2	Ava silt loam, 2 to 5 percent slopes, eroded	2.82	6.2%		**126	**41	**51	0.00	**93
13A	Bluford silt loam, 0 to 2 percent slopes	0.64	1.4%		136	44	55	3.39	101
<b>Weighted Average</b>					<b>128.7</b>	<b>42.4</b>	<b>51.5</b>	<b>3.57</b>	<b>97</b>

**Table: Optimum Crop Productivity Ratings for Illinois Soil by K.R. Olson and J.M. Lang, Office of Research, ACES, University of Illinois at Champaign-Urbana.** Version: 1/2/2012 Amended Table S2 B811

Crop yields and productivity indices for optimum management (B811) are maintained at the following NRES web site: <http://soilproductivity.nres.illinois.edu/>

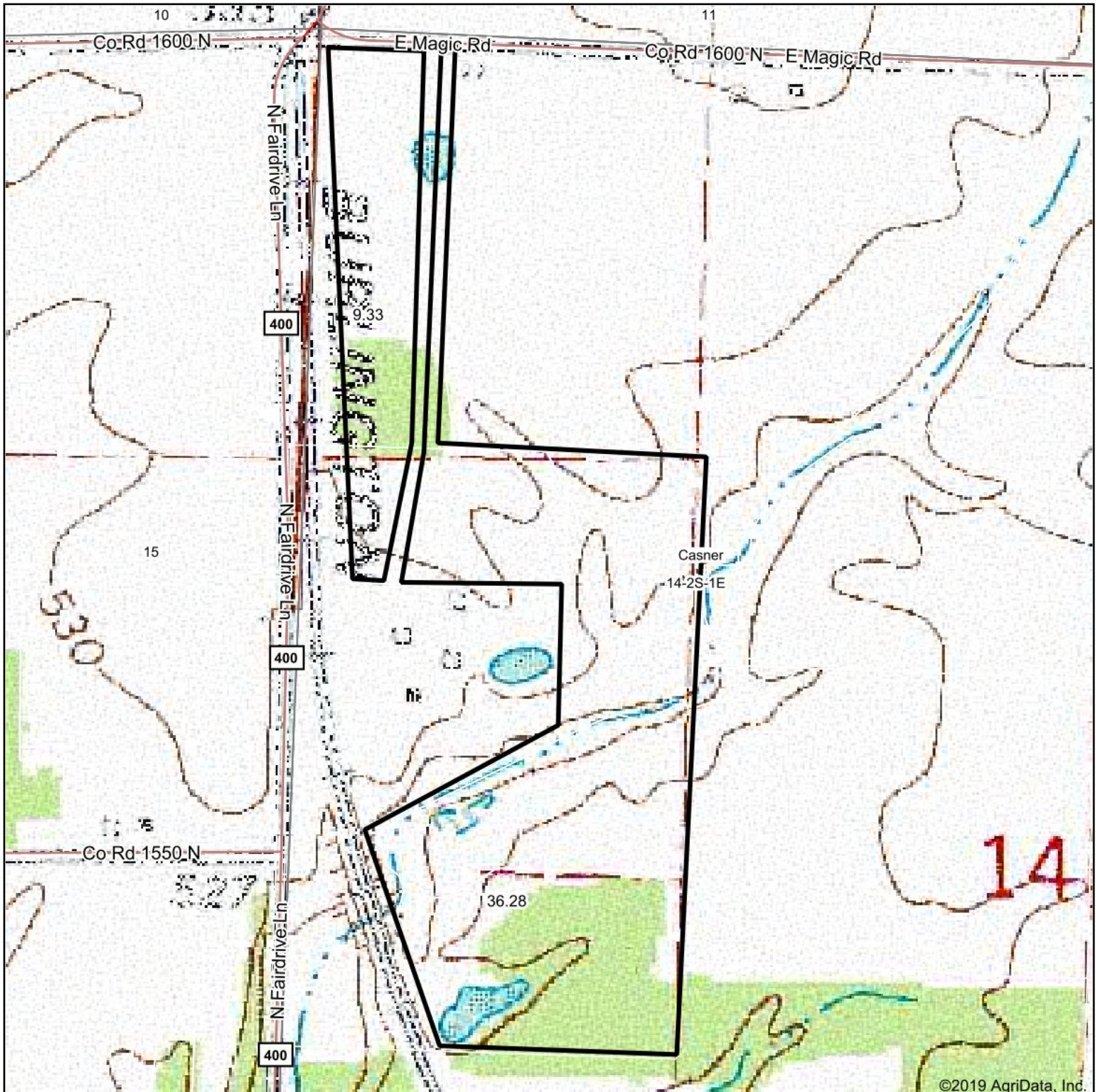
\*\* Indexes adjusted for slope and erosion according to Bulletin 811 Table S3

e Soils in the well drained group were not rated for grass-legume and are shown with a zero "0".

\*c: Using Capabilities Class Dominant Condition Aggregation Method

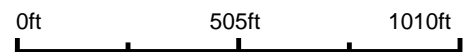
Soils data provided by USDA and NRCS. Soils data provided by University of Illinois at Champaign-Urbana.

# Topography Map

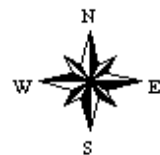


©2019 AgriData, Inc.

map center: 38° 21' 13.37, -89° 4' 6.46



**14-2S-1E**  
**Jefferson County**  
**Illinois**



Maps Provided By:  
**surety**  
CUSTOMIZED ONLINE MAPPING  
© AgriData, Inc. 2019 www.AgriDataInc.com

2/14/2020