

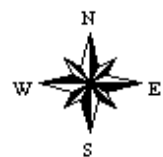
Aerial Map



Map Center: 38° 32' 48.99, -90° 5' 9.14

0ft 1270ft 2539ft

10-1N-9W
St Clair County
Illinois



1/13/2020



Maps Provided By:

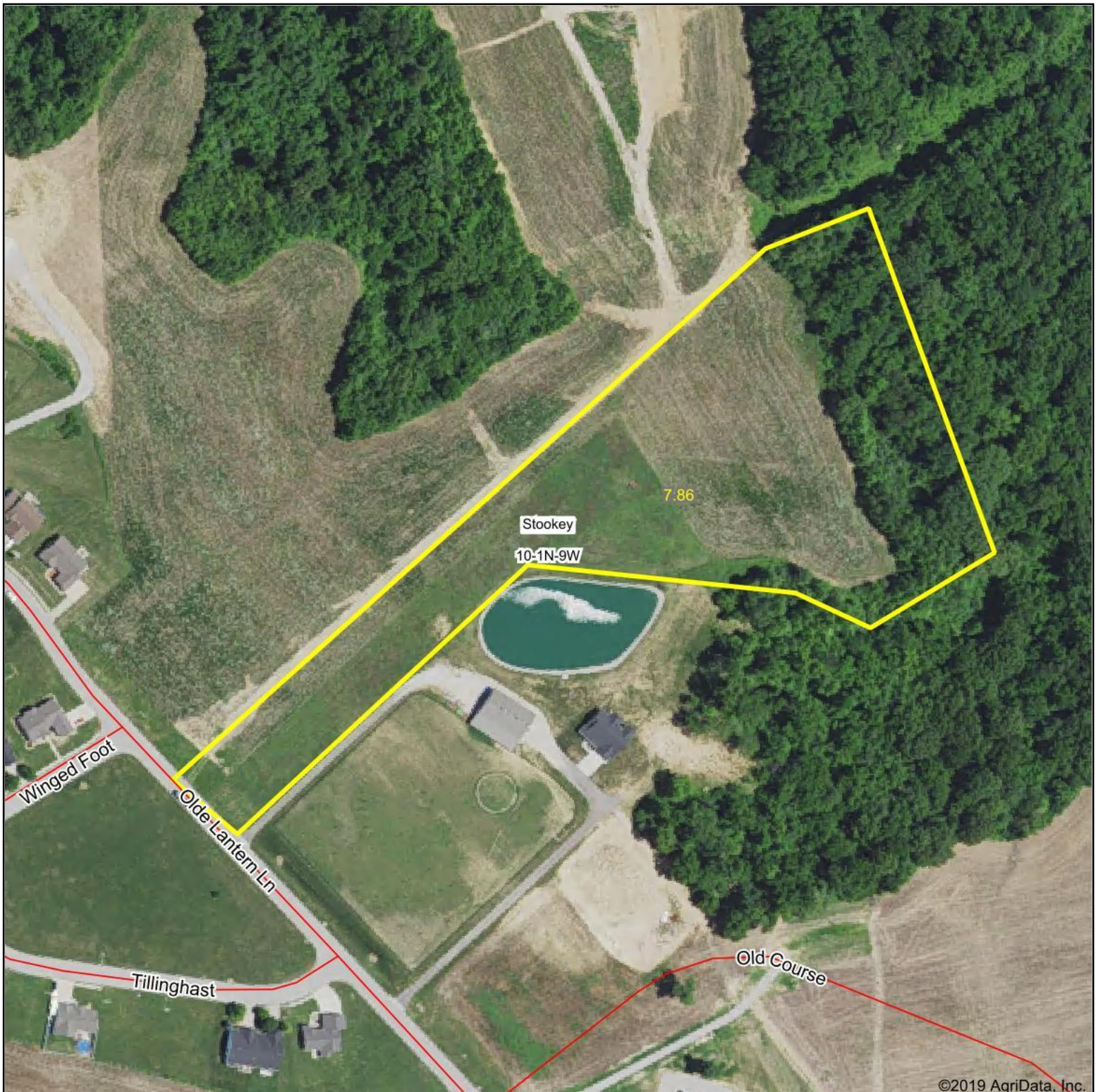


© AgriData, Inc. 2019

www.AgriDataInc.com

Field borders provided by Farm Service Agency as of 5/21/2008. Soils data provided by University of Illinois at Champaign-Urbana.

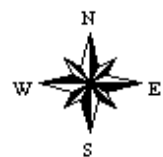
Aerial Map



Map Center: 38° 32' 48.99, -90° 5' 9.15

0ft 233ft 466ft

10-1N-9W
St Clair County
Illinois



1/13/2020



Maps Provided By:

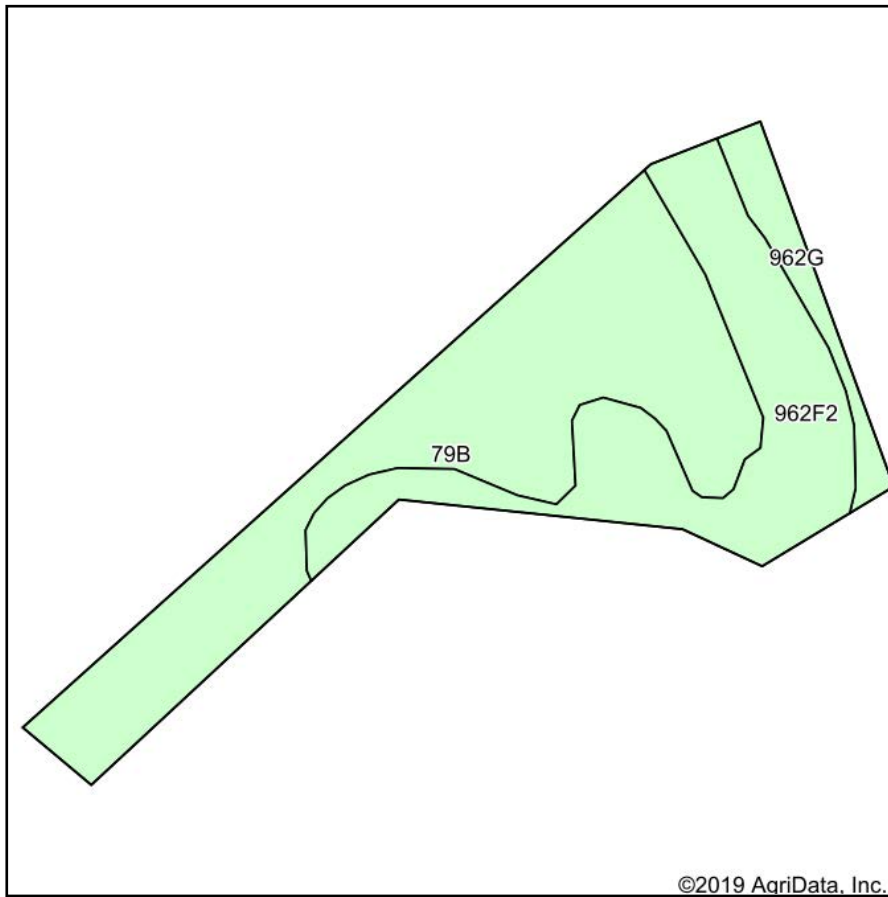


© AgriData, Inc. 2019

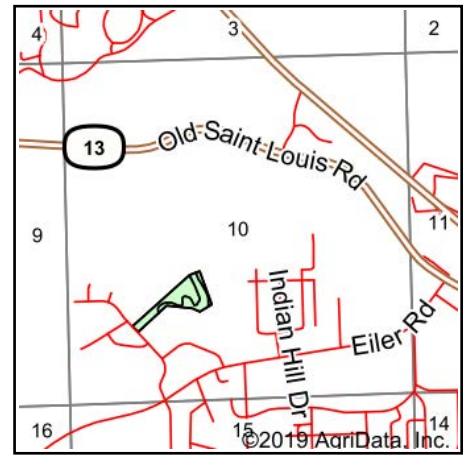
www.AgriDataInc.com

Field borders provided by Farm Service Agency as of 5/21/2008. Soils data provided by University of Illinois at Champaign-Urbana.

Soils Map



Soils data provided by USDA and NRCS.



State: **Illinois**
 County: **St Clair**
 Location: **10-1N-9W**
 Township: **Stookey**
 Acres: **7.86**
 Date: **1/13/2020**



Maps Provided By:



Area Symbol: IL163. Soil Area Version: 11									
Code	Soil Description	Acres	Percent of field	Il. State Productivity Index Legend	Corn Bu/A	Soybeans Bu/A	Wheat Bu/A	Grass-legume e hay, T/A	Crop productivity index for optimum management
**79B	Menfro silt loam, 2 to 5 percent slopes	4.57	58.1%		**163	**50	**62	0.00	**119
**962F2	Sylvan-Bold silt loams, 18 to 35 percent slopes, eroded	2.77	35.2%		**101	**31	**39	**2.75	**73
**962G	Sylvan-Bold silt loams, 35 to 60 percent slopes	0.52	6.6%		**73	**23	**28	**2.00	**53
Weighted Average					135.2	41.5	51.6	1.10	98.4

Table: Optimum Crop Productivity Ratings for Illinois Soil by K.R. Olson and J.M. Lang, Office of Research, ACES, University of Illinois at Champaign-Urbana. Version: 1/2/2012 Amended Table S2 B811

Crop yields and productivity indices for optimum management (B811) are maintained at the following NRES web site: <http://soilproductivity.nres.illinois.edu/>

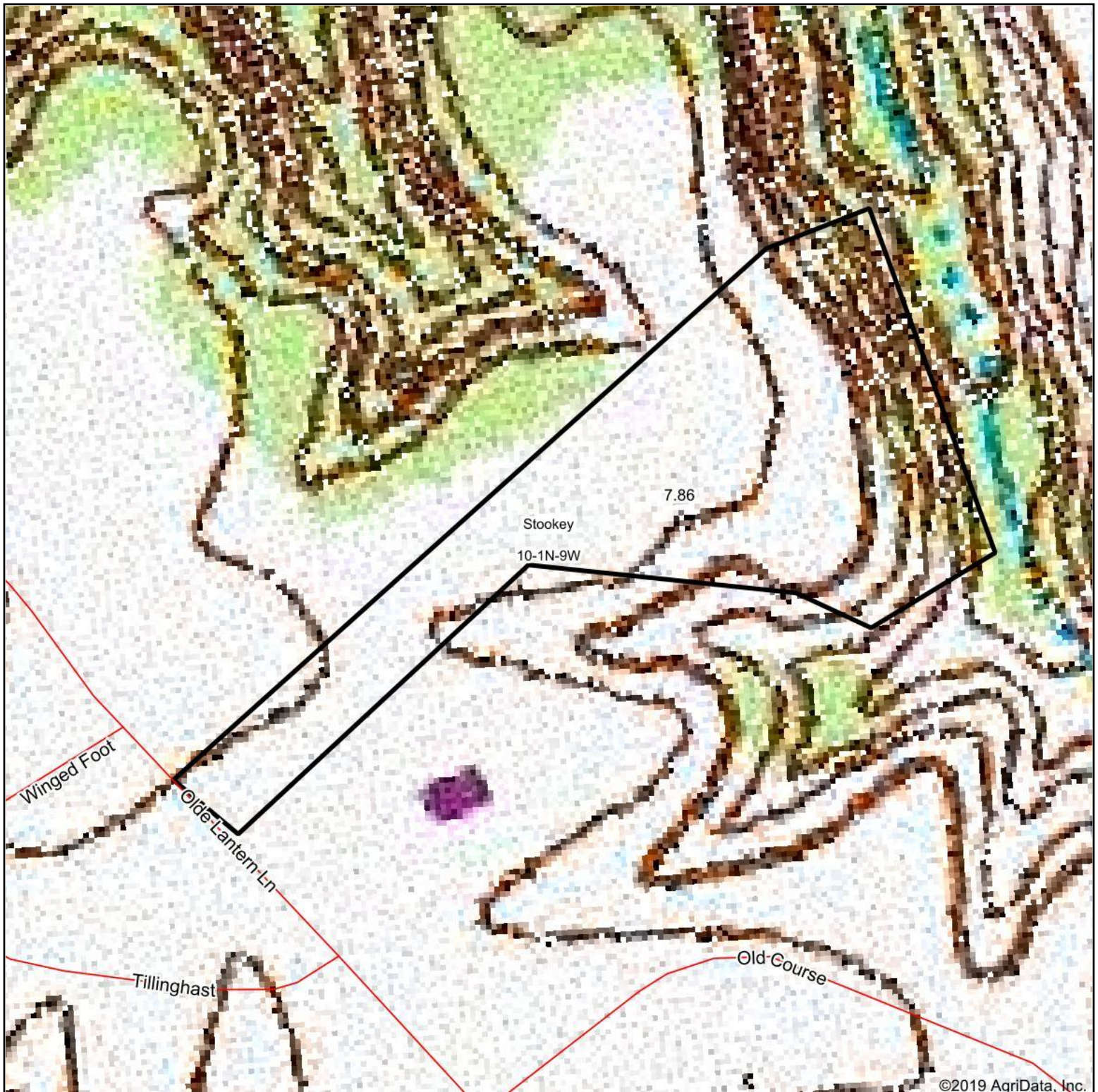
** Indexes adjusted for slope and erosion according to Bulletin 811 Table S3

e Soils in the well drained group were not rated for grass-legume and are shown with a zero "0".

*c: Using Capabilities Class Dominant Condition Aggregation Method

Soils data provided by USDA and NRCS. Soils data provided by University of Illinois at Champaign-Urbana.

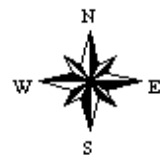
Topography Map



map center: 38° 32' 48.99, -90° 5' 9.15

0ft 233ft 466ft

10-1N-9W
St Clair County
Illinois



1/13/2020



Maps Provided By:



© AgriData, Inc. 2019

www.AgriDataInc.com