

LAND AUCTION - JEFFERSON COUNTY IL

137+- Acres Offered in 5 Tracts

Location: N of Mt. Vernon IL - Fronting East Carthage Road / Co Rd 2075N

SOLD!

SALE DATE: SATURDAY, DECEMBER 14, 2019

11:00 AM AT FARM CREDIT SERVICES IN MT. VERNON IL

(Farm Credit Address: 410 Potomac Blvd, Mt. Vernon IL)

PROPERTY INSPECTION:

Sunday, Dec 1, 10 a.m. to Noon at Tract 2 OR By Appointment

SURVEYED — HOME SITES — ROLLING TIMBER — EXCELLENT HUNT PROPERTY
TRACT DESCRIPTIONS

TRACT 1: 20 Acres / TRACT 2: 29.15 Acres

TRACT 3: 49.15 Acres, Combination of Tracts 1 and 2/ TRACT 4: 35.69 Acres

TRACT 5: 12 Acres / TRACT 6: 40.7 Acres

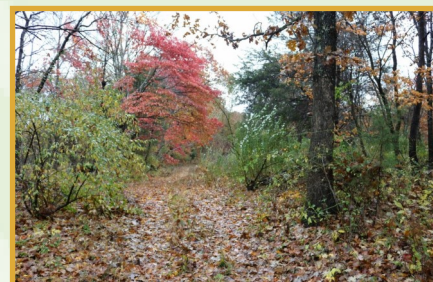
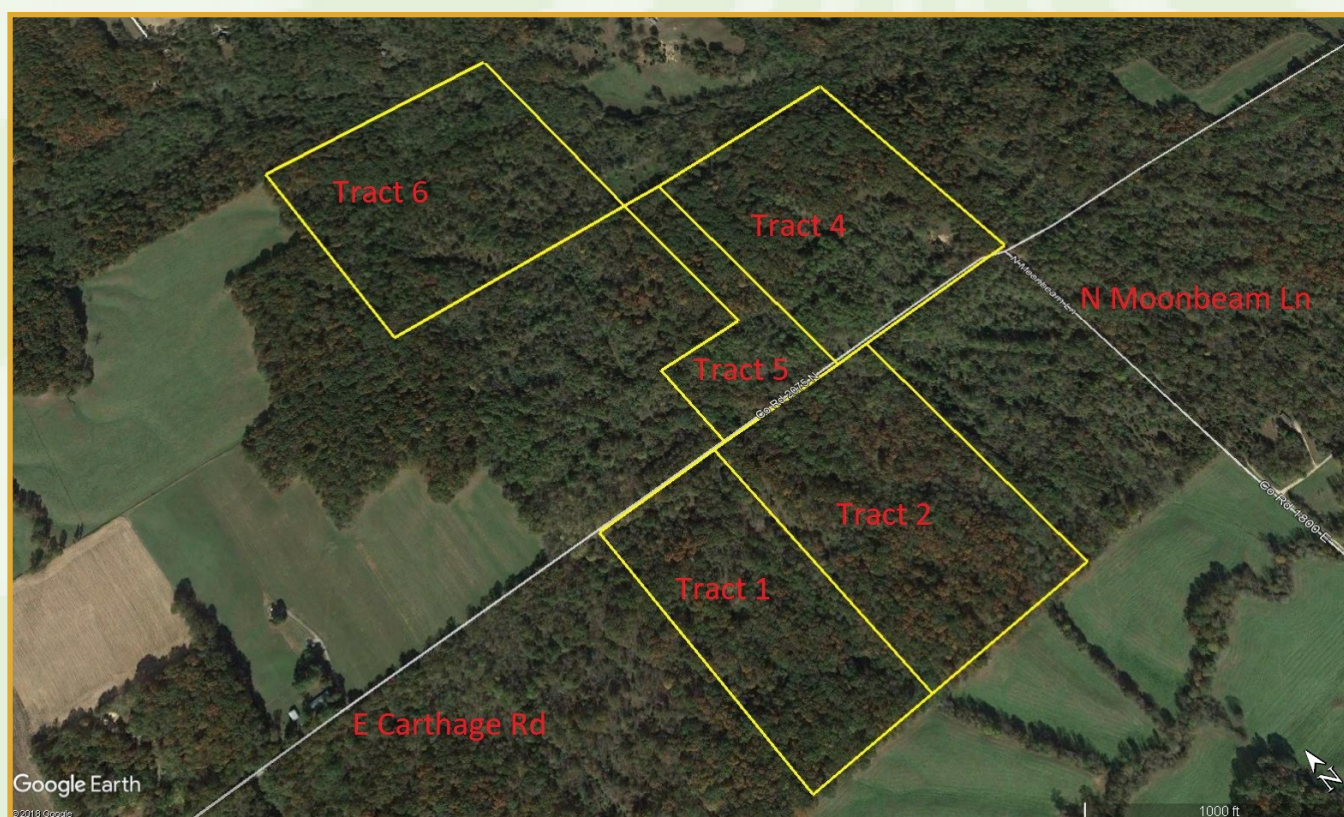
TRACT 7: 88.39 Acres, Combination of Tracts 4, 5 and 6

REAL ESTATE LAND AUCTION TERMS: 10% down, balance at closing. No buyer's premium.

Auctioneers: Mark Kennedy, IL Lic #440000202 and Don Bailey, IL Lic #441002325

Complete terms, conditions, photos, etc. on buyafarm.com.

All statements made day of the sale take precedence over all printed advertisements.



buyafarm.com

Specializing in Rural Real Estate Sales and Auctions



Auctioneer/Broker Don Bailey
618-919-1031 / dbailey@buyafarm.com



MAIN OFFICE: 1403 Hillcrest Drive, Sparta IL 62286 / 800-443-1998
BRANCH OFFICE: 301 N Main St, Flora IL 62839 / 855-468-3478



Broker Tim Probst
217-821-0882 / tprobst@buyafarm.com