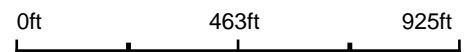


Aerial Map



Map Center: 37° 31' 46.01, -88° 23' 18.6



25-11S-7E
Hardin County
Illinois



12/28/2019

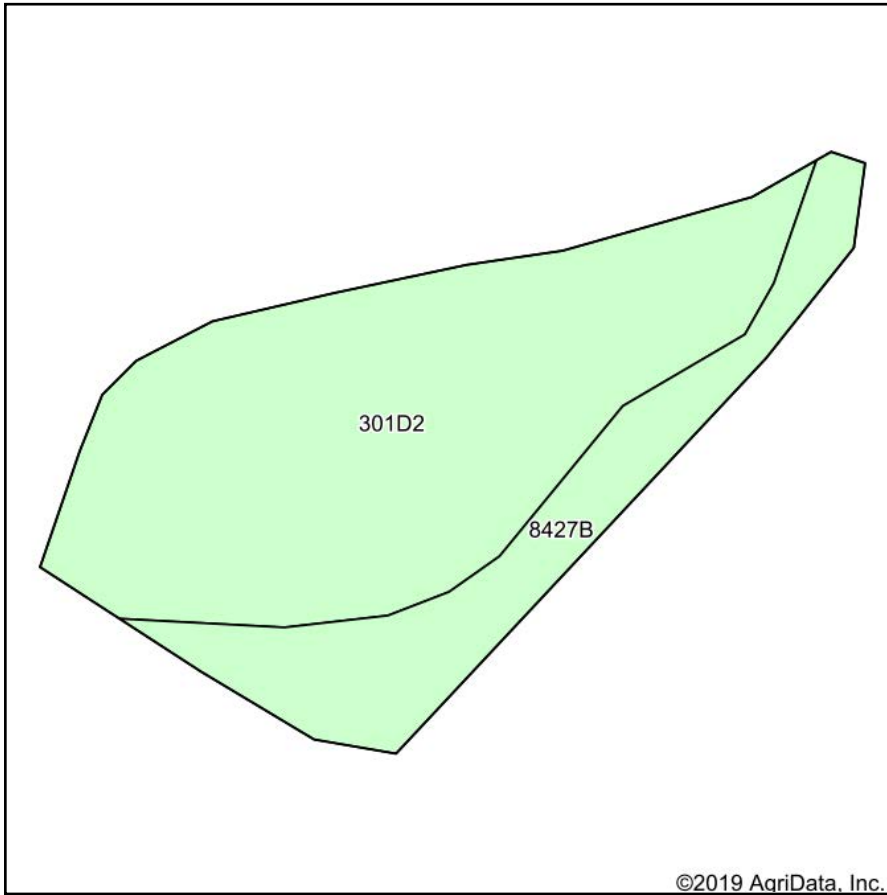


Maps Provided By:

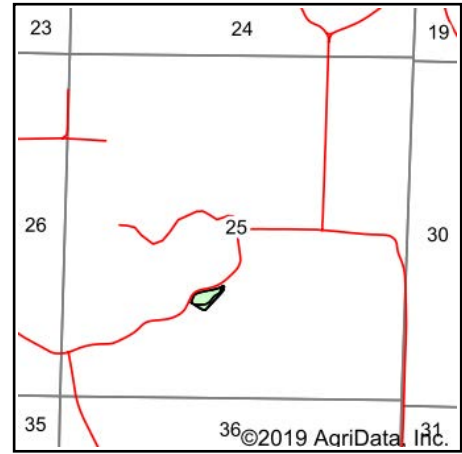


© AgriData, Inc. 2019 www.AgriDataInc.com

Soils Map



Soils data provided by USDA and NRCS.



State: **Illinois**
 County: **Hardin**
 Location: **25-11S-7E**
 Township: **Monroe**
 Acres: **2.18**
 Date: **12/28/2019**



Maps Provided By:



Area Symbol: IL069, Soil Area Version: 13								
Code	Soil Description	Acres	Percent of field	Il. State Productivity Index Legend	Corn Bu/A	Soybeans Bu/A	Wheat Bu/A	Crop productivity index for optimum management
**301D2	Grantsburg silt loam, 10 to 18 percent slopes, eroded	1.61	73.9%		**113	**39	**46	**86
8427B	Burnside silt loam, 1 to 4 percent slopes, occasionally flooded	0.57	26.1%		128	43	51	96
Weighted Average					116.9	40	47.3	88.6

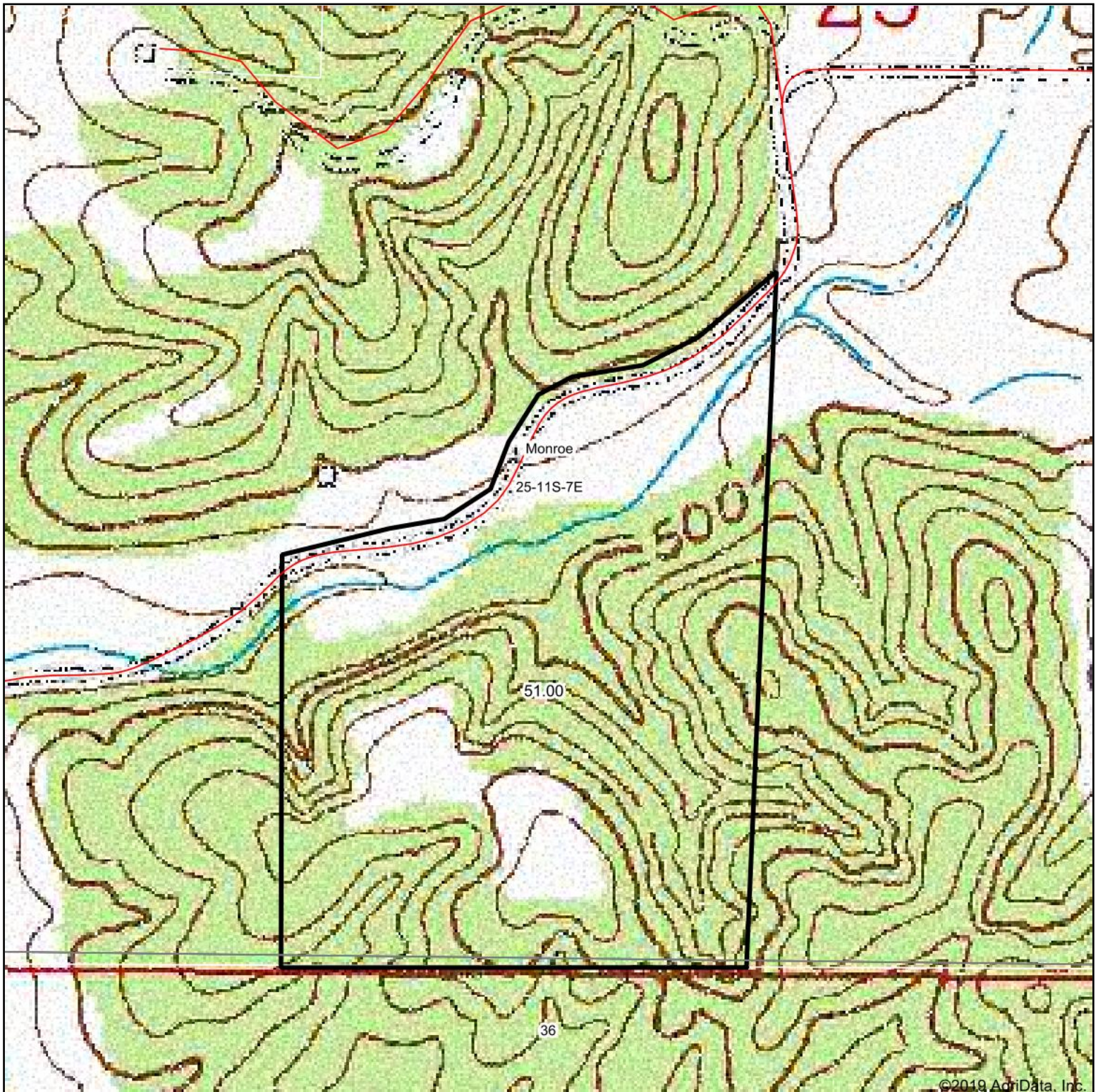
Table: Optimum Crop Productivity Ratings for Illinois Soil by K.R. Olson and J.M. Lang, Office of Research, ACES, University of Illinois at Champaign-Urbana. Version: 1/2/2012 Amended Table S2 B811

Crop yields and productivity indices for optimum management (B811) are maintained at the following NRES web site: <http://soilproductivity.nres.illinois.edu/>

** Indexes adjusted for slope and erosion according to Bulletin 811 Table S3

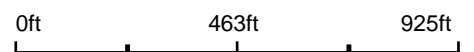
Soils data provided by USDA and NRCS. Soils data provided by University of Illinois at Champaign-Urbana.

Topography Map

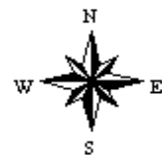


©2019 AgriData, Inc.

map center: 37° 31' 46.01, -88° 23' 18.6



25-11S-7E
Hardin County
Illinois



Maps Provided By:
 **surety**
CUSTOMIZED ONLINE MAPPING
© AgriData, Inc. 2019 www.AgridataInc.com

12/28/2019