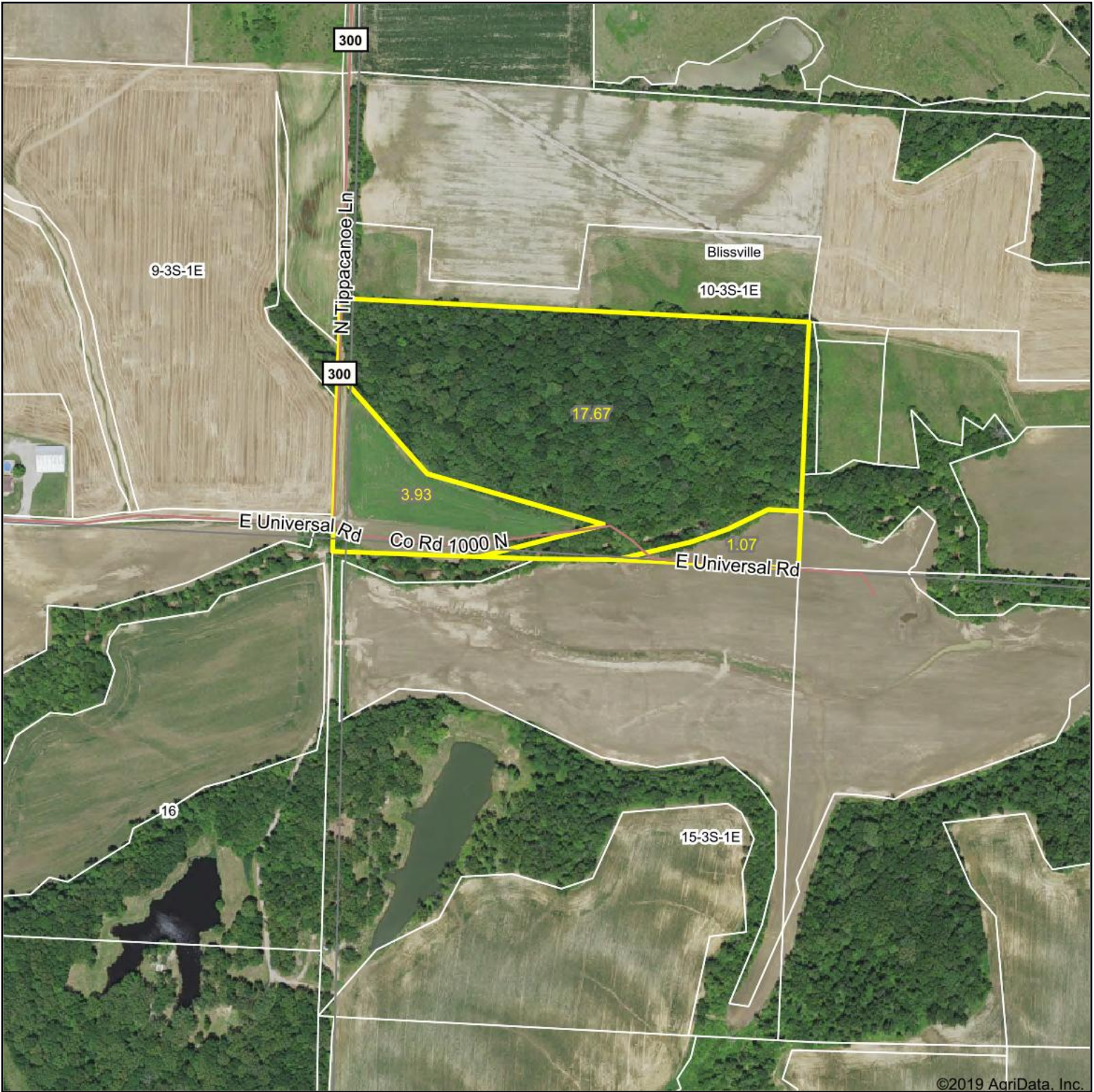


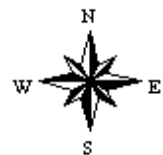
Aerial Map



Map Center: 38° 16' 20.2, -89° 5' 37.83



10-3S-1E
Jefferson County
Illinois



11/22/2019

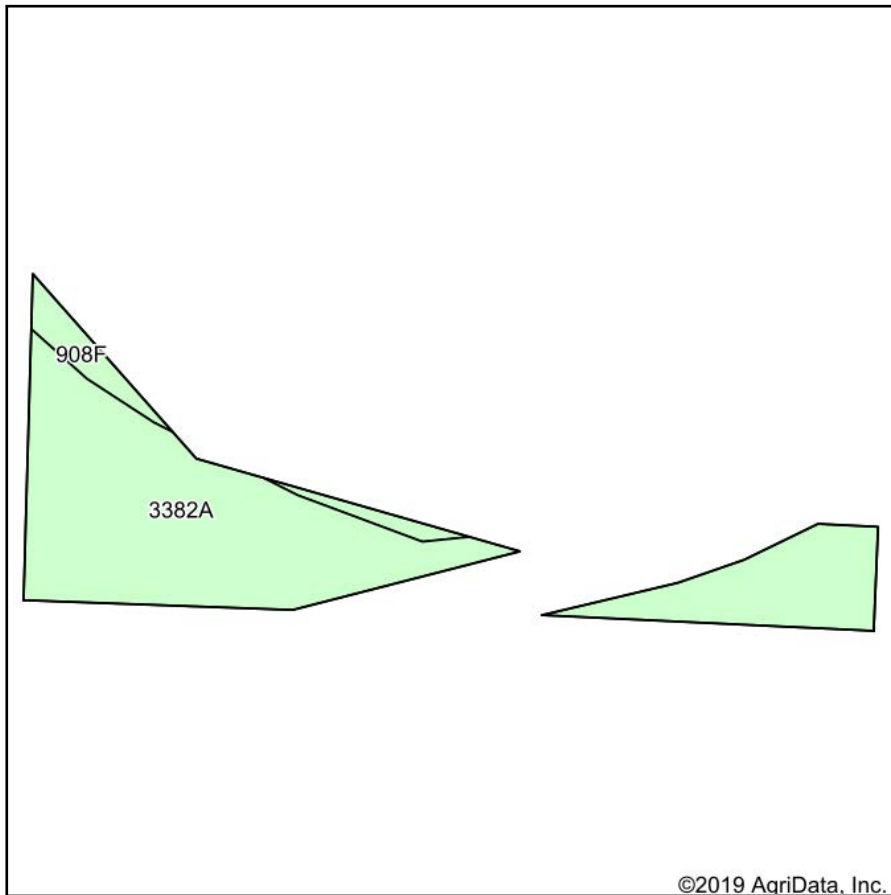


Maps Provided By:

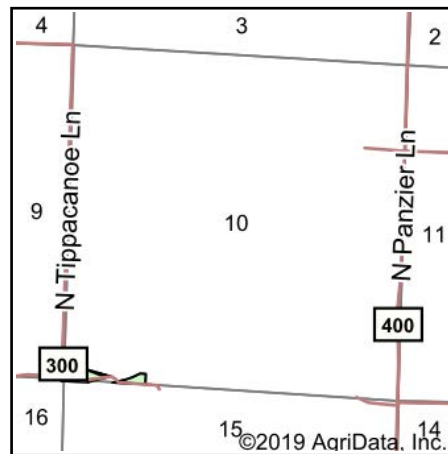


© AgriData, Inc. 2019 www.AgriDataInc.com

Soils Map



Soils data provided by USDA and NRCS.



State: **Illinois**
 County: **Jefferson**
 Location: **10-3S-1E**
 Township: **Blissville**
 Acres: **5**
 Date: **11/22/2019**



Maps Provided By:



Area Symbol: IL081, Soil Area Version: 12								
Code	Soil Description	Acres	Percent of field	Il. State Productivity Index Legend	Corn Bu/A	Soybeans Bu/A	Wheat Bu/A	Crop productivity index for optimum management
3382A	Belknap silt loam, 0 to 2 percent slopes, frequently flooded	4.60	92.0%		156	52	63	117
**908F	Hickory-Kell silt loams, 18 to 35 percent slopes	0.40	8.0%		**87	**29	**34	**67
Weighted Average					150.5	50.2	60.7	113

Table: Optimum Crop Productivity Ratings for Illinois Soil by K.R. Olson and J.M. Lang, Office of Research, ACES, University of Illinois at Champaign-Urbana. Version: 1/2/2012 Amended Table S2 B811

Crop yields and productivity indices for optimum management (B811) are maintained at the following NRES web site: <http://soilproductivity.nres.illinois.edu/>

** Indexes adjusted for slope and erosion according to Bulletin 811 Table S3

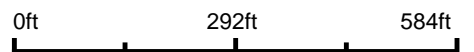
Soils data provided by USDA and NRCS. Soils data provided by University of Illinois at Champaign-Urbana.

Topography Map

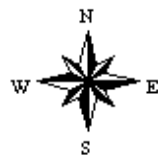


©2019 AgriData, Inc.

map center: 38° 16' 22.78, -89° 5' 38.14



10-3S-1E
Jefferson County
Illinois



12/3/2019



Maps Provided By:



© AgriData, Inc. 2019

www.AgridataInc.com