

LAND AUCTION - MONROE COUNTY IL

135+- Acres Offered in 2 Tracts

Property Address: 3530 Reed Road, Red Bud IL 62278

SOLD!

SALE DATE: SATURDAY, OCTOBER 26, 2019
WATERLOO CORNS GOLF LINKS IN WATERLOO IL
(Corns Golf Links Address: 3933 Ahne Road, Waterloo IL 62298)

TILLABLE/RECREATIONAL MIX OFFERED AS 2 TRACTS

This amazing 135-acre property near Red Bud has it all: 125 tillable acres with public road access to Reed Road and MM Road, 3 ponds, possible home sites, creeks and waterfalls.

Tract 1: 98 mostly tillable acres with excellent access to both MM Road and Reed Road. Also includes small patch of timber and small pond.

Tract 2: 37 acres evenly mixed between potentially tillable and recreational ground. Tract has an existing access point to Reed Road which, along with electric service, leads back to an old home site which could be cleared and used for a new home or hunting cabin.

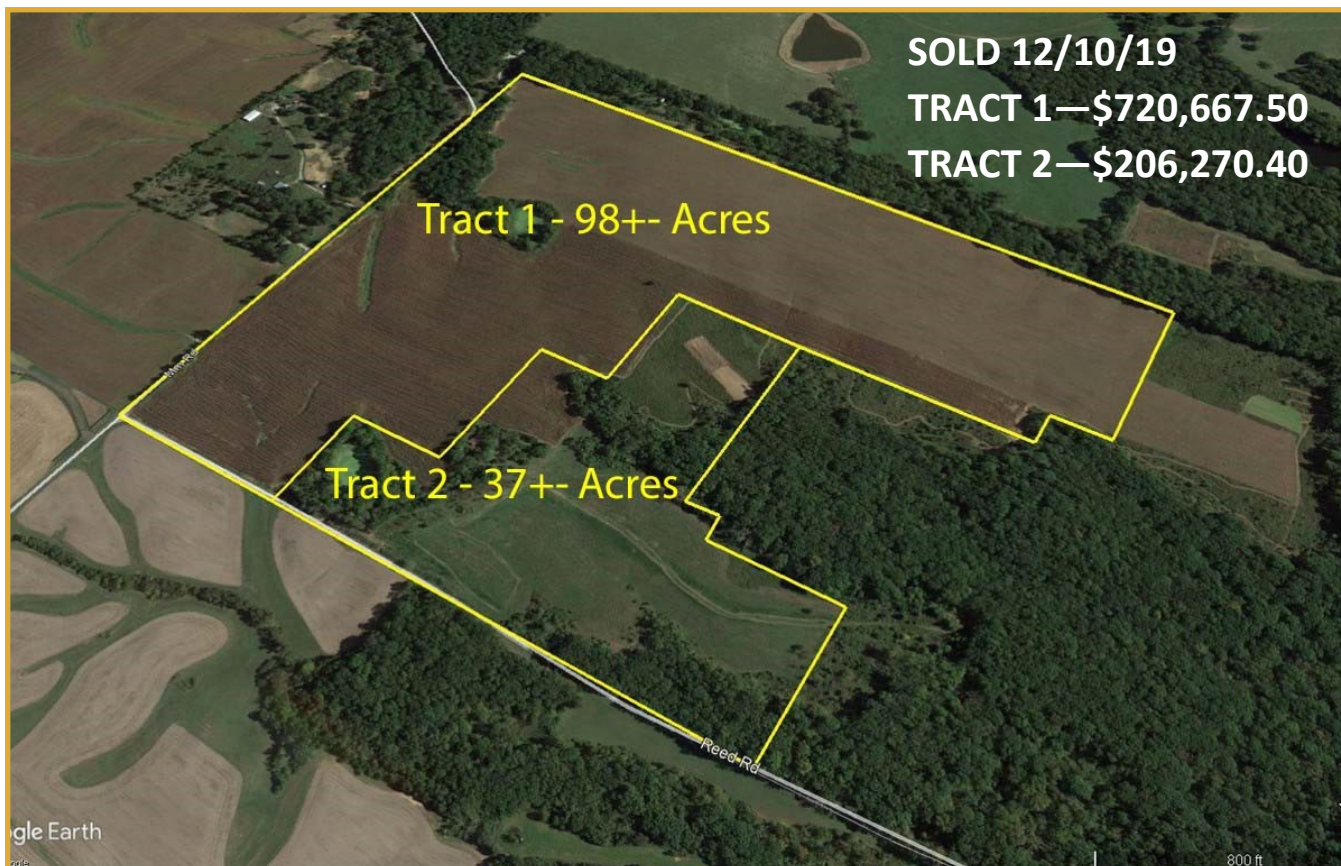
Legal Description: Part NE ¼, & Pt. N ½ of SE ¼ in Section 2, T4S., R9W., Monroe County, IL

REAL ESTATE LAND AUCTION TERMS: 10% down, balance at closing. No buyer's premium.

Auctioneer: Mark Kennedy, IL Lic #440000202.

Complete terms, conditions, photos, etc. on buyafarm.com.

All statements made day of the sale take precedence over all printed advertisements.



buyafarm.com

Specializing in Rural Real Estate Sales and Auctions



Broker Mike Cochran
309-360-4040 / mikecochran@buyafarm.com



MAIN OFFICE: 1403 Hillcrest Drive, Sparta IL 62286 / 800-443-1998
BRANCH OFFICE: 301 N Main St, Flora IL 62839 / 855-468-3478



Broker Devin Birch
309-208-6889 / devinbirch@buyafarm.com