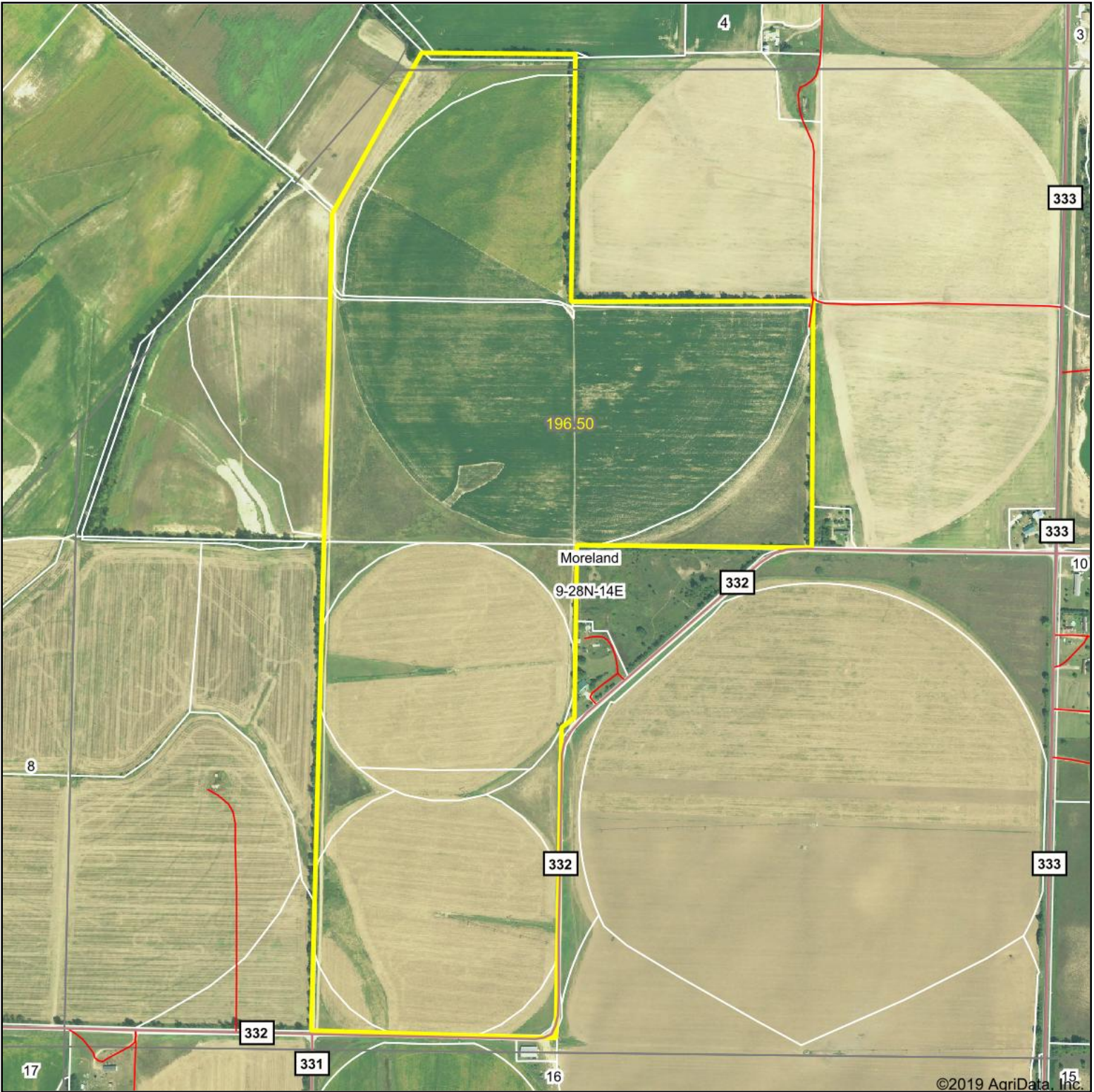
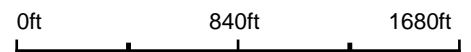


Aerial Map



©2019 AgriData, Inc.

Map Center: 37° 6' 18.67, -89° 30' 49.34



9-28N-14E
Scott County
Missouri

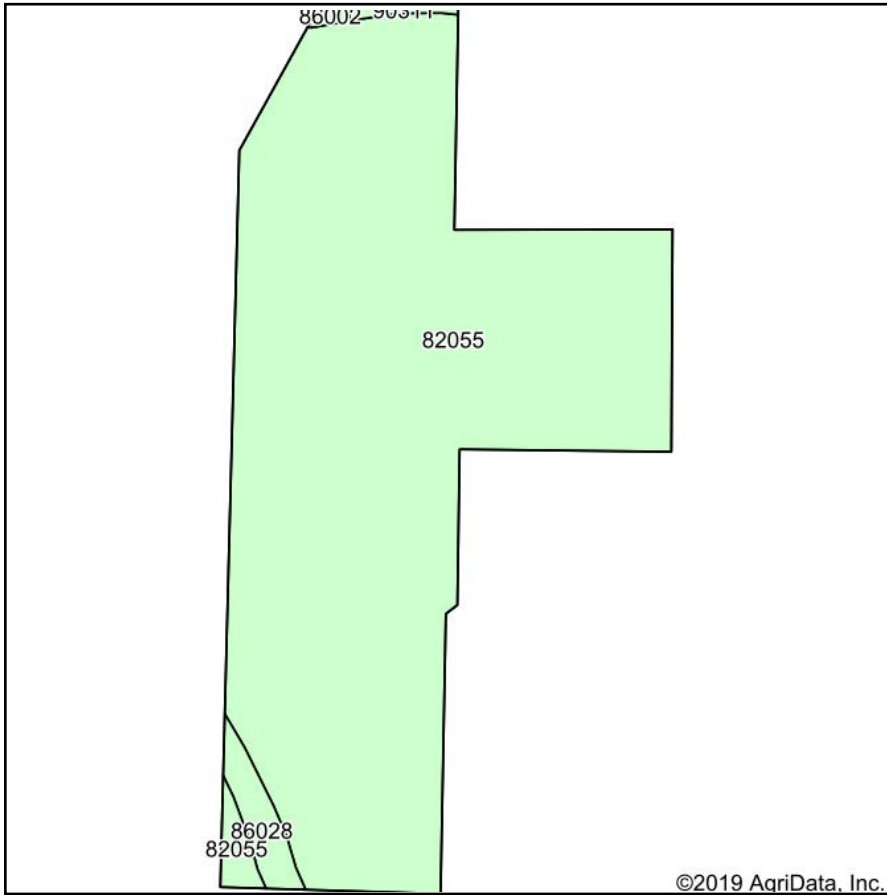


11/1/2019

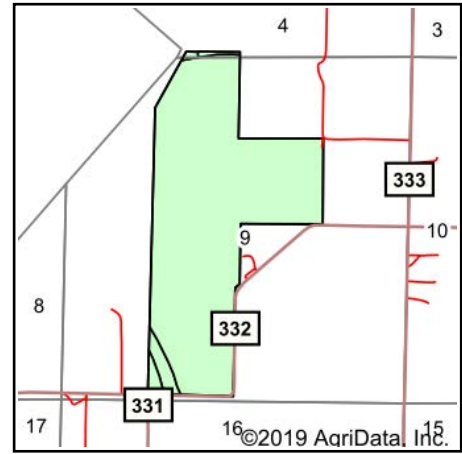
Maps Provided By:
 **surety**
CUSTOMIZED ONLINE MAPPING
© AgriData, Inc. 2019 www.AgriDataInc.com

Field borders provided by Farm Service Agency as of 5/21/2008.

Soils Map



Soils data provided by USDA and NRCS.



State: **Missouri**
 County: **Scott**
 Location: **9-28N-14E**
 Township: **Moreland**
 Acres: **196.5**
 Date: **11/1/2019**



Maps Provided By:



© AgriData, Inc. 2019

www.AgriDataInc.com

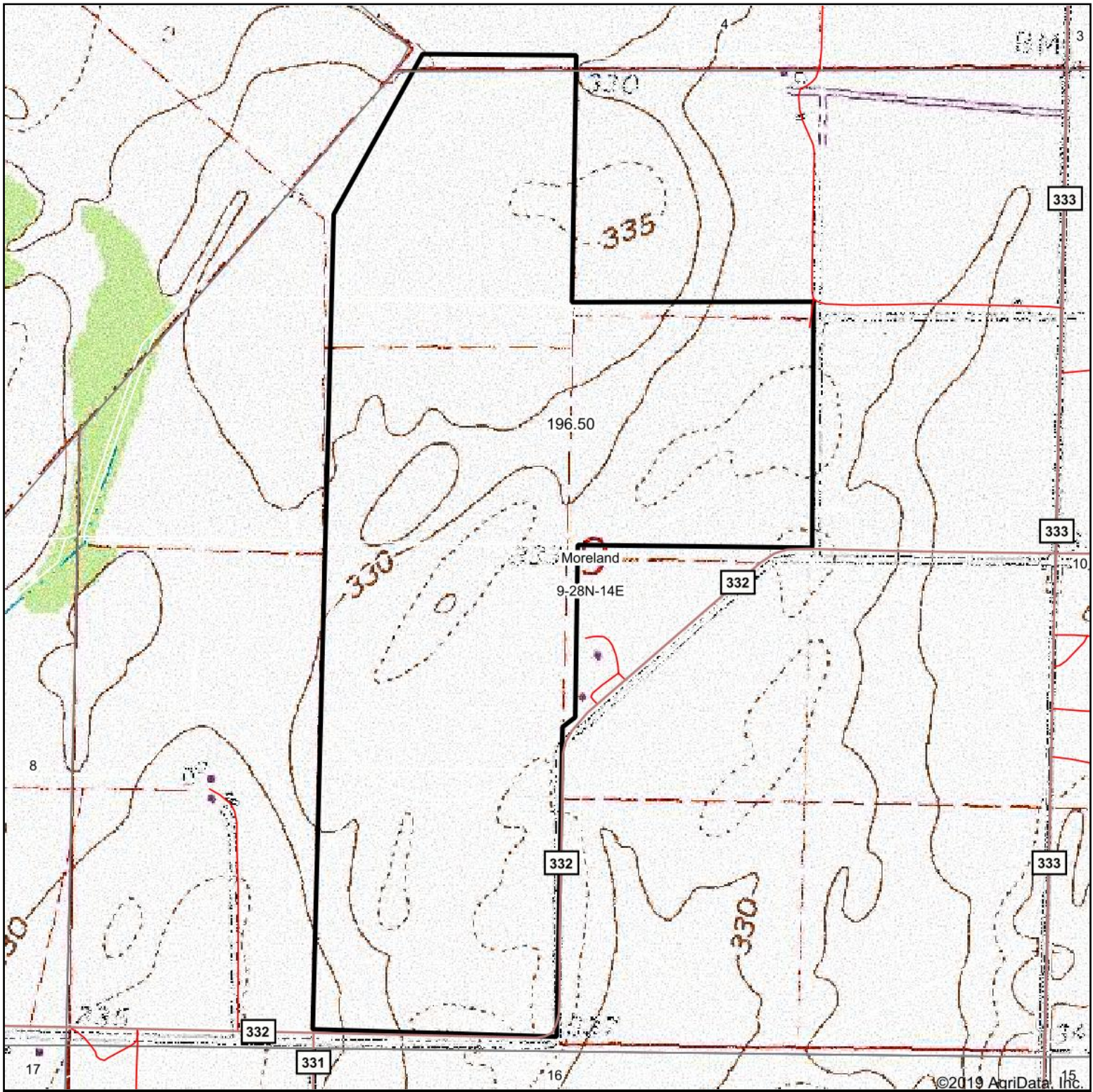


Area Symbol: MO201, Soil Area Version: 21											
Code	Soil Description	Acres	Percent of field	Non-Irr Class	Cor n	Cotton lint	Ric e	Winter wheat	Soybeans	Grain sorghum	*n NCCPI Soybeans
82055	Scotco sand, 1 to 5 percent slopes	190.69	97.0%	Ills		360					15
86028	Diehlstadt sandy clay loam, 0 to 1 percent slopes, occasionally flooded	4.48	2.3%	llw	5	648		4	4		30
90311	Adler silt loam, 0 to 3 percent slopes	0.78	0.4%	I		720					71
86002	Falaya silt loam, 0 to 1 percent slopes, occasionally flooded	0.55	0.3%	llw	5	651	4	4	3	10	47
Weighted Average					0.1	368.8	*-	0.1	0.1	*-	*n 15.7

*n: The aggregation method is "Weighted Average using major components"

Soils data provided by USDA and NRCS.

Topography Map

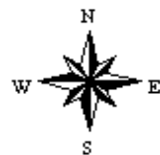


map center: 37° 6' 18.67, -89° 30' 49.34

0ft 840ft 1680ft



9-28N-14E
Scott County
Missouri



Maps Provided By:
surety
CUSTOMIZED ONLINE MAPPING
© AgriData, Inc. 2019 www.AgriDataInc.com

11/1/2019