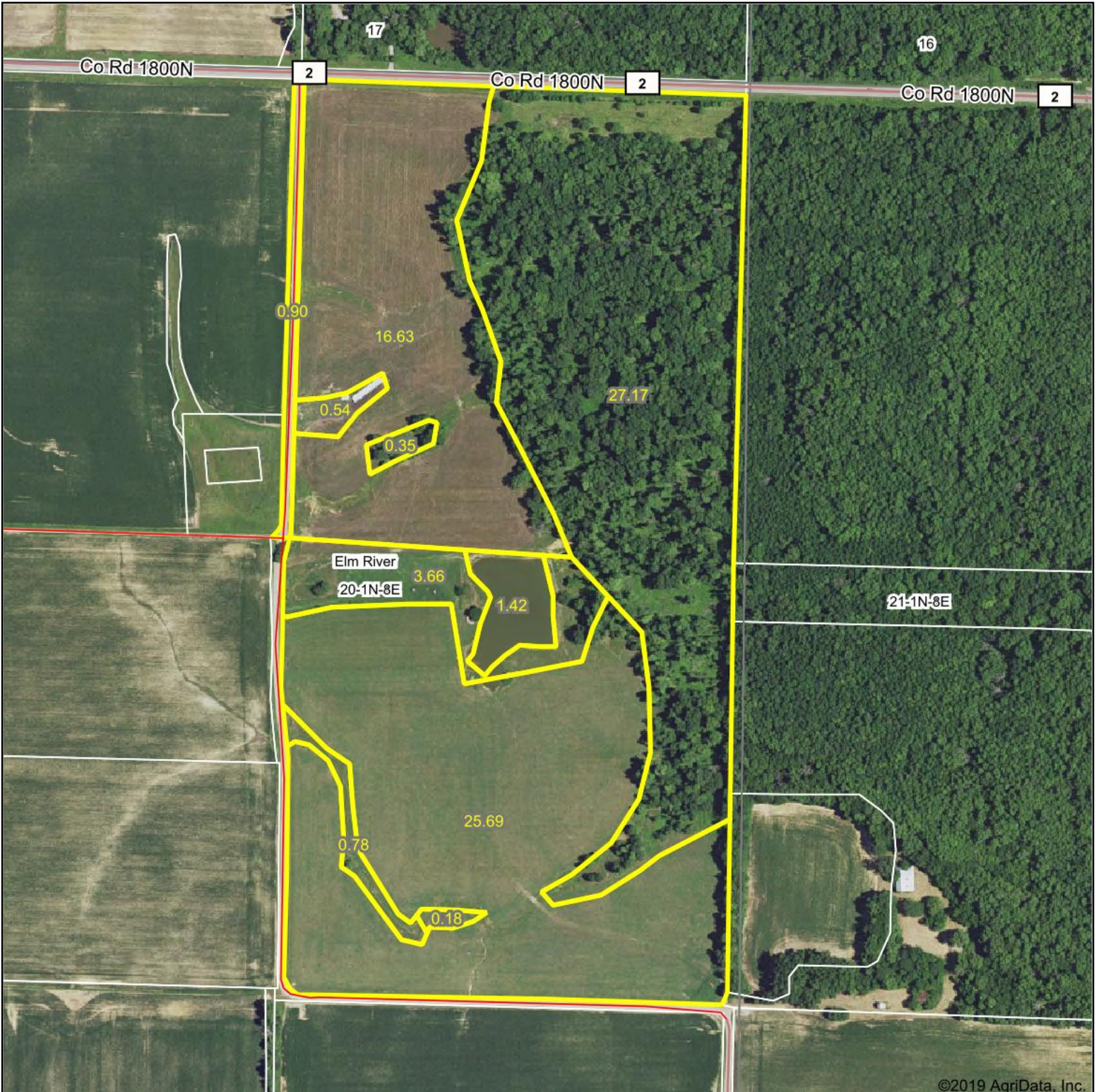


Aerial Map



Map Center: 38° 30' 28.34, -88° 19' 56.01



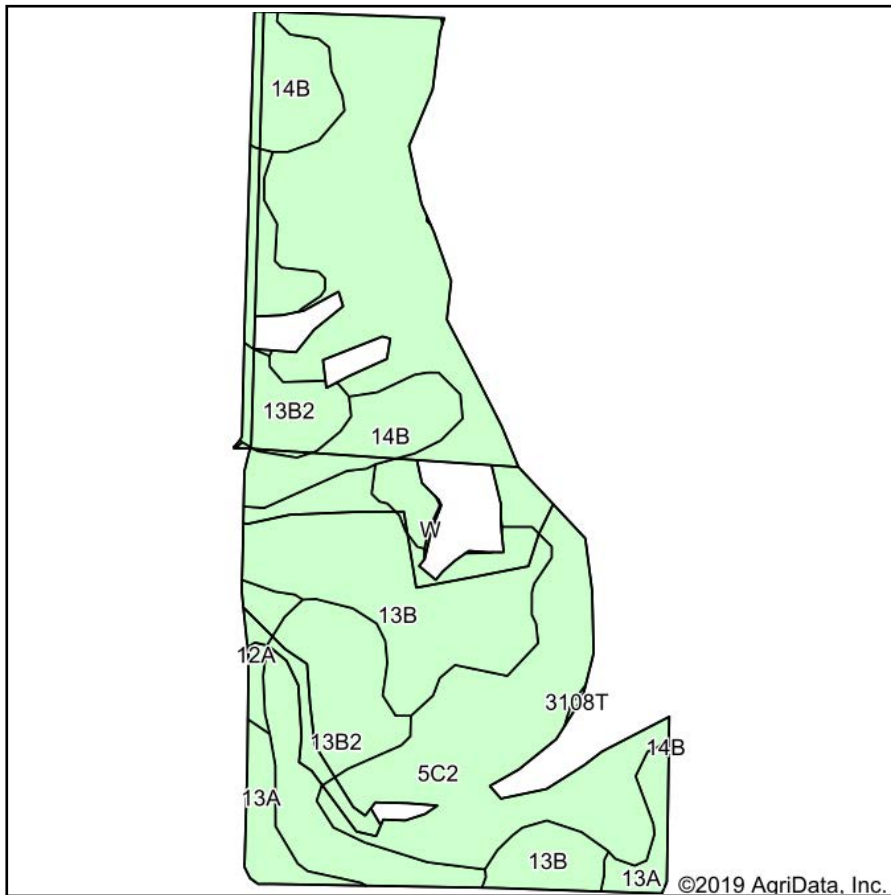
20-1N-8E
Wayne County
Illinois



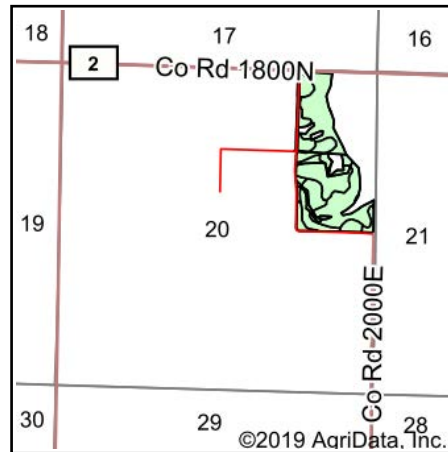
Maps Provided By:
 **surety**
CUSTOMIZED ONLINE MAPPING
© AgriData, Inc. 2019 www.AgriDataInc.com

11/13/2019

Soils Map



Soils data provided by USDA and NRCS.



State: **Illinois**
 County: **Wayne**
 Location: **20-1N-8E**
 Township: **Elm River**
 Acres: **47.66**
 Date: **11/13/2019**

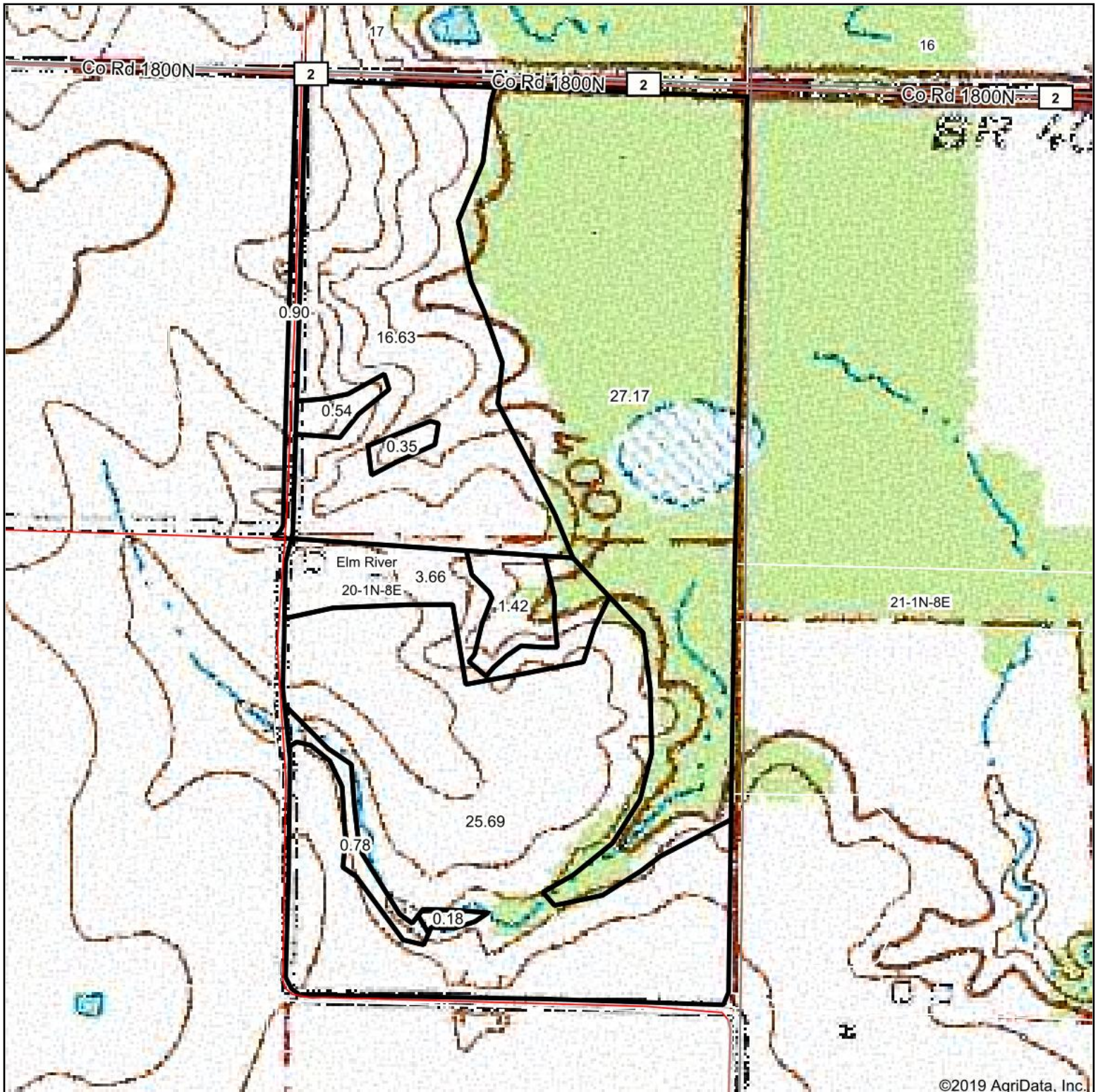


Area Symbol: IL191, Soil Area Version: 17									
Code	Soil Description	Acres	Percent of field	Il. State Productivity Index Legend	Corn Bu/A	Soybeans Bu/A	Wheat Bu/A	Grass-legume e hay, T/A	Crop productivity index for optimum management
**5C2	Blair silt loam, 5 to 10 percent slopes, eroded	22.18	46.5%		**124	**41	**50	**3.95	**94
**13B	Bluford silt loam, 2 to 5 percent slopes	10.35	21.7%		**135	**44	**54	**3.36	**100
**13B2	Bluford silt loam, 2 to 5 percent slopes, eroded	7.63	16.0%		**129	**42	**52	**3.22	**96
**14B	Ava silt loam, 2 to 5 percent slopes	4.60	9.7%		**134	**44	**54	0.00	**99
13A	Bluford silt loam, 0 to 2 percent slopes	2.14	4.5%		136	44	55	3.39	101
12A	Wynoose silt loam, 0 to 2 percent slopes	0.76	1.6%		128	42	51	4.26	97
Weighted Average					128.8	42.3	51.8	3.30	96.5

Table: Optimum Crop Productivity Ratings for Illinois Soil by K.R. Olson and J.M. Lang, Office of Research, ACES, University of Illinois at Champaign-Urbana. Version: 1/2/2012 Amended Table S2 B811
 Crop yields and productivity indices for optimum management (B811) are maintained at the following NRES web site: <http://soilproductivity.nres.illinois.edu/>

** Indexes adjusted for slope and erosion according to Bulletin 811 Table S3
 e Soils in the well drained group were not rated for grass-legume and are shown with a zero "0".
 *c: Using Capabilities Class Dominant Condition Aggregation Method
 Soils data provided by USDA and NRCS. Soils data provided by University of Illinois at Champaign-Urbana.

Topography Map

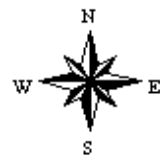


©2019 AgriData, Inc.

map center: 38° 30' 28.34, -88° 19' 56.01



20-1N-8E
Wayne County
Illinois



11/13/2019



Maps Provided By:



© AgriData, Inc. 2019

www.AgridataInc.com