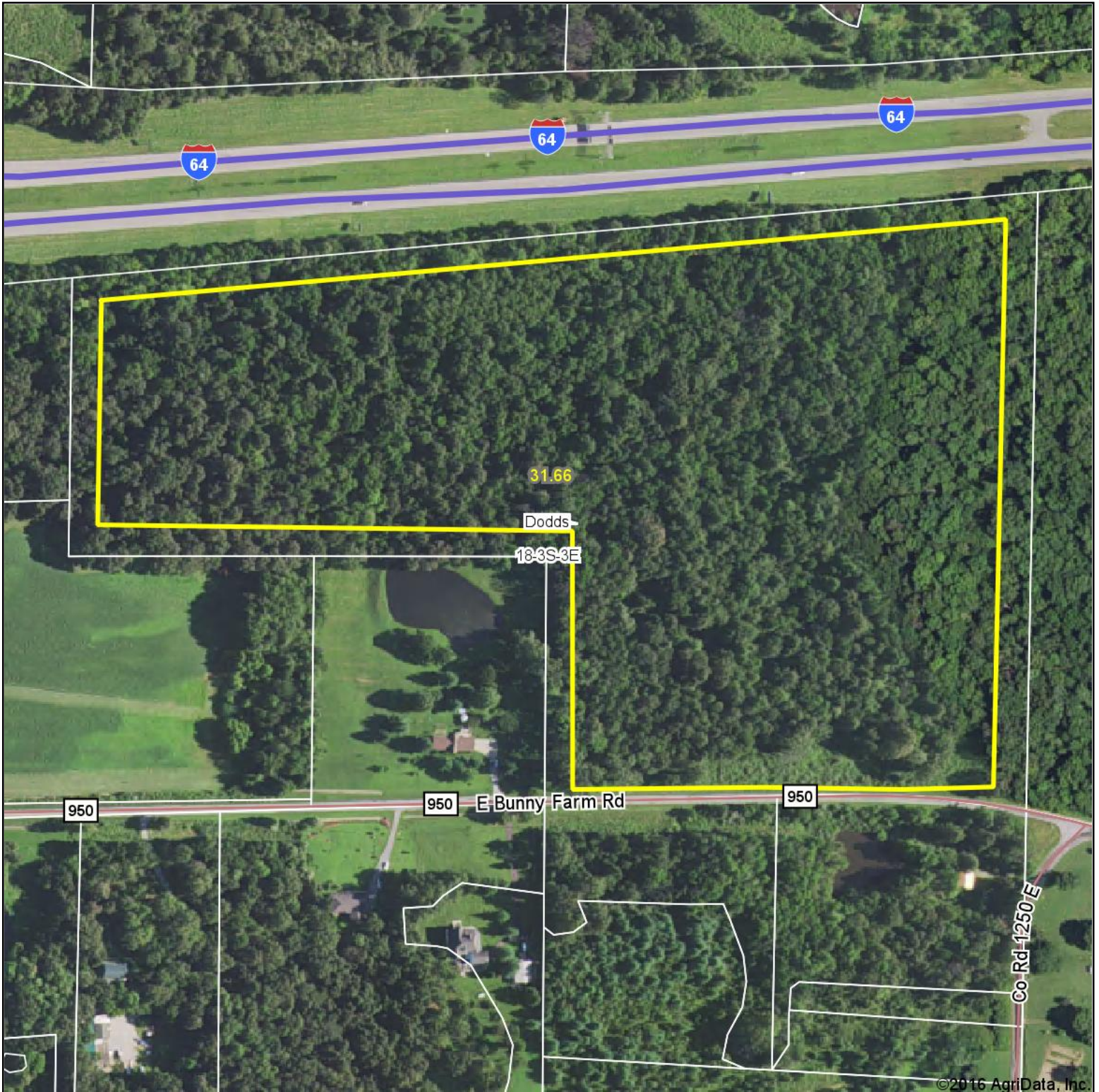


Aerial Map



©2016 AgriData, Inc.

map center: 38° 16' 8.19, -88° 55' 11.56



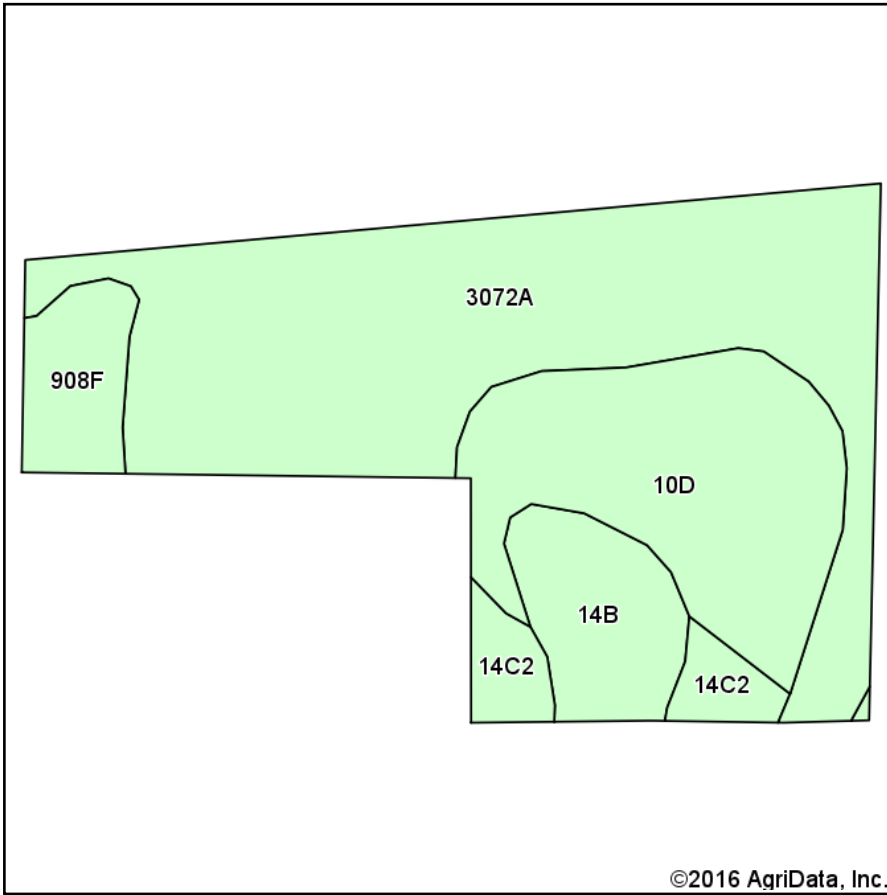
Maps Provided By:
surety
CUSTOMIZED ONLINE MAPPING
© AgriData, Inc. 2016 www.AgriDataInc.com

18-3S-3E
Jefferson County
Illinois

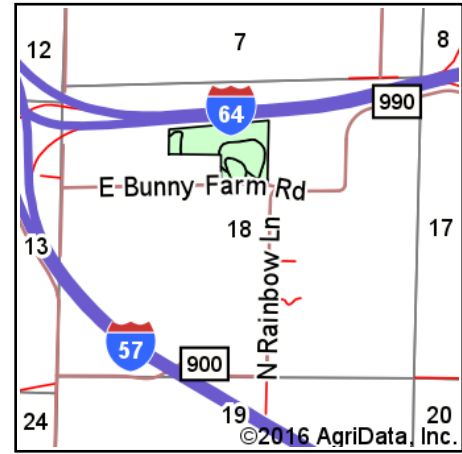


11/28/2016

Soils Map



Soils data provided by USDA and NRCS.



State: **Illinois**
 County: **Jefferson**
 Location: **18-3S-3E**
 Township: **Dodds**
 Acres: **31.66**
 Date: **11/28/2016**



Area Symbol: IL081, Soil Area Version: 8

Code	Soil Description	Acres	Percent of field	Il. State Productivity Index Legend	Corn Bu/A	Soybeans Bu/A	Wheat Bu/A	Grass-legume e hay, T/A	Crop productivity index for optimum management
3072A	Sharon silt loam, 0 to 2 percent slopes, frequently flooded	17.12	54.1%		164	53	63	0.00	122
**10D	Plumfield silty clay loam, 10 to 18 percent slopes	8.09	25.6%		**97	**32	**37	**3.19	**74
**14B	Ava silt loam, 2 to 5 percent slopes	2.90	9.2%		**134	**44	**54	0.00	**99
**908F	Hickory-Kell silt loams, 18 to 35 percent slopes	1.90	6.0%		**87	**29	**34	**2.81	**67
**14C2	Ava silt loam, 5 to 10 percent slopes, eroded	1.65	5.2%		**122	**40	**50	0.00	**90
Weighted Average					137.3	44.7	53.1	0.98	102.7

Area Symbol: IL081, Soil Area Version: 8

Table: Optimum Crop Productivity Ratings for Illinois Soil by K.R. Olson and J.M. Lang, Office of Research, ACES, University of Illinois at Champaign-Urbana. Version: 1/2/2012 Amended Table S2 B811

Crop yields and productivity indices for optimum management (B811) are maintained at the following NRES web site:

[https://www.ideals.illinois.edu/handle/2142/1027/](https://www.ideals.illinois.edu/handle/2142/1027)

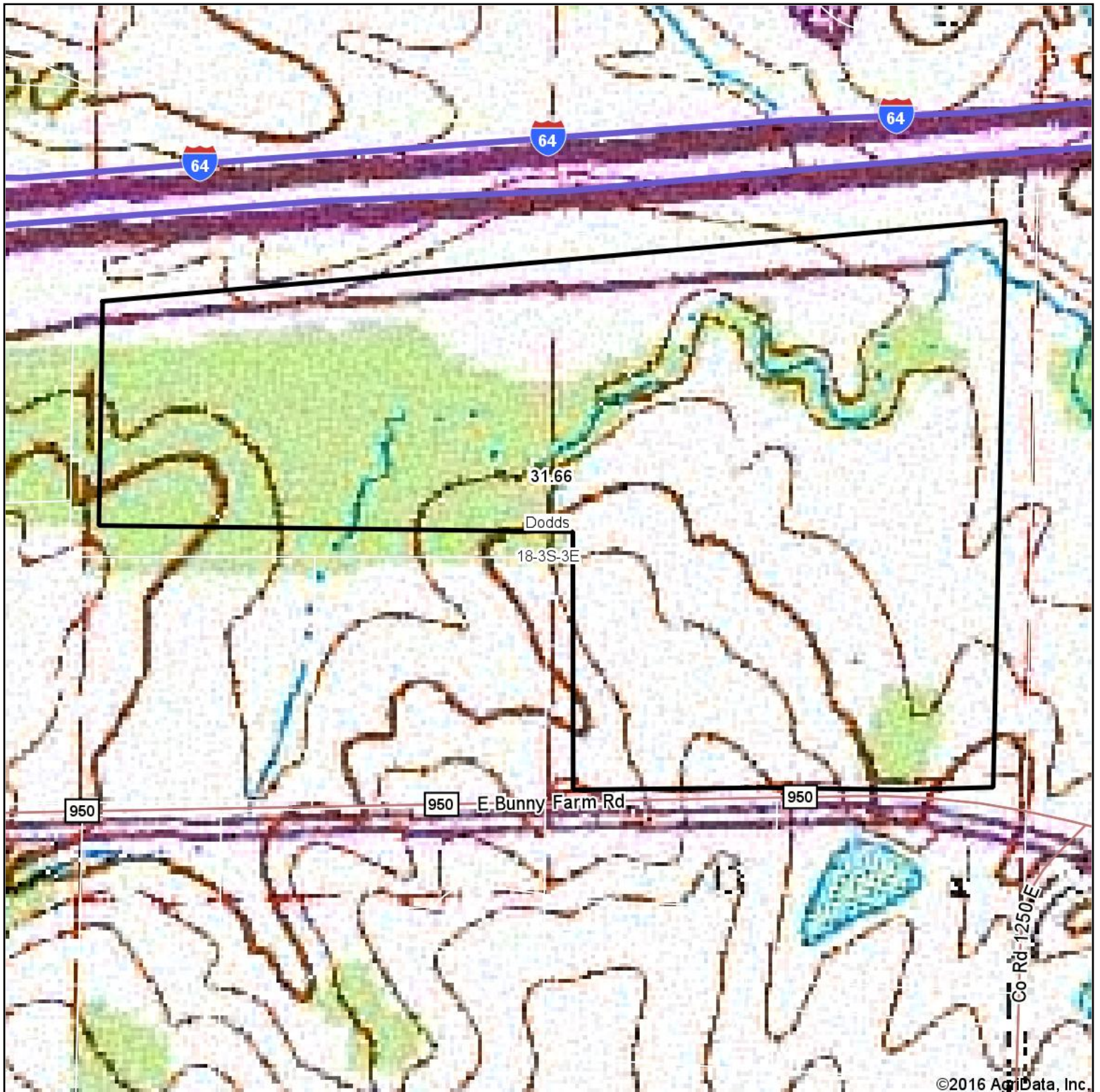
** Indexes adjusted for slope and erosion according to Bulletin 811 Table S3

e Soils in the well drained group were not rated for grass-legume and are shown with a zero "0".

Soils data provided by USDA and NRCS. Soils data provided by University of Illinois at Champaign-Urbana.

*c: Using Capabilities Class Dominant Condition Aggregation Method

Topography Map



map center: 38° 16' 8.19, -88° 55' 11.56



18-3S-3E
Jefferson County
Illinois



11/28/2016