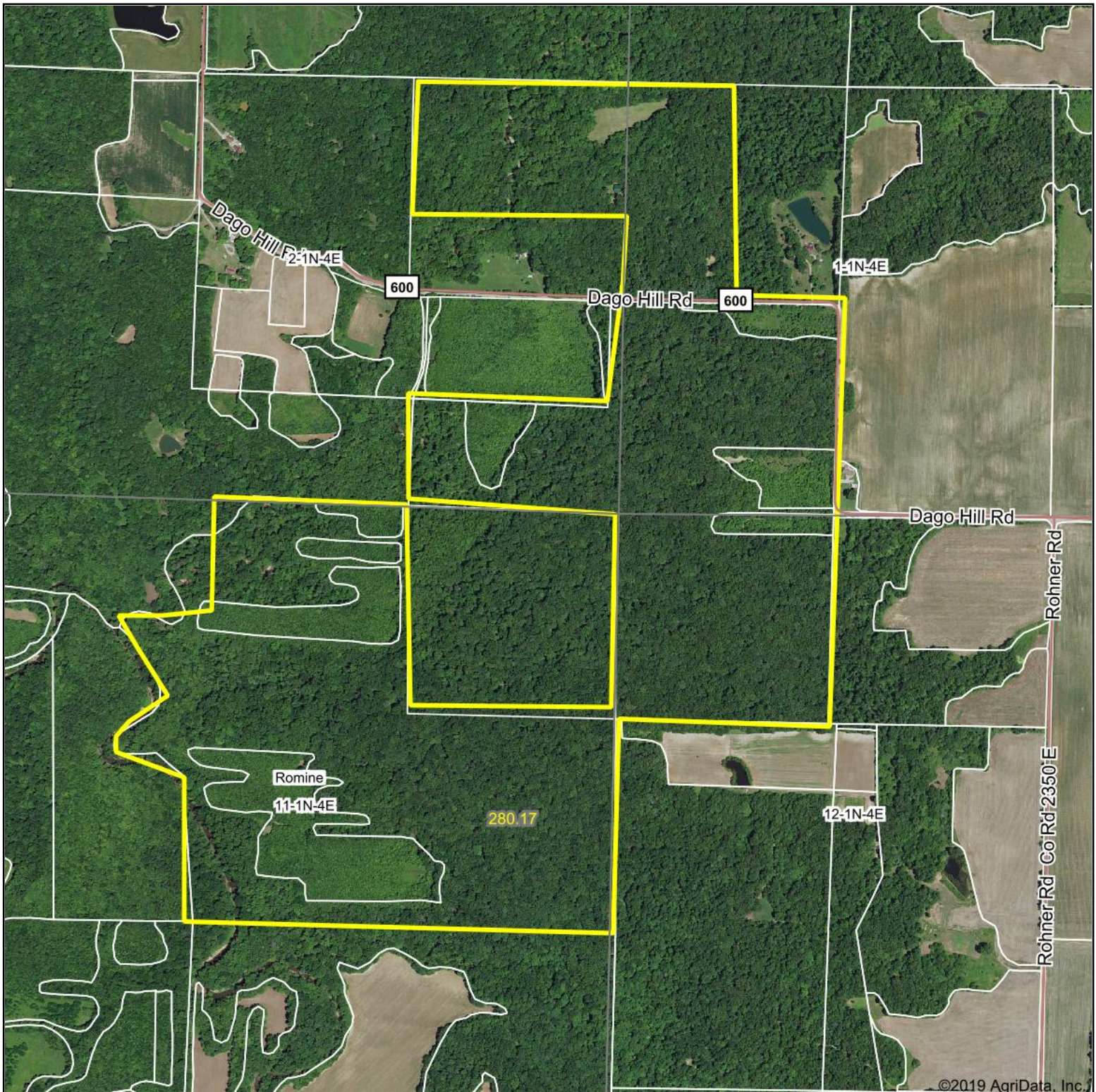


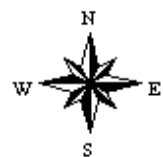
Aerial Map



Map Center: 38° 32' 49.18, -88° 43' 9.39

0ft 968ft 1936ft

11-1N-4E
Marion County
Illinois



6/24/2019



Maps Provided By:

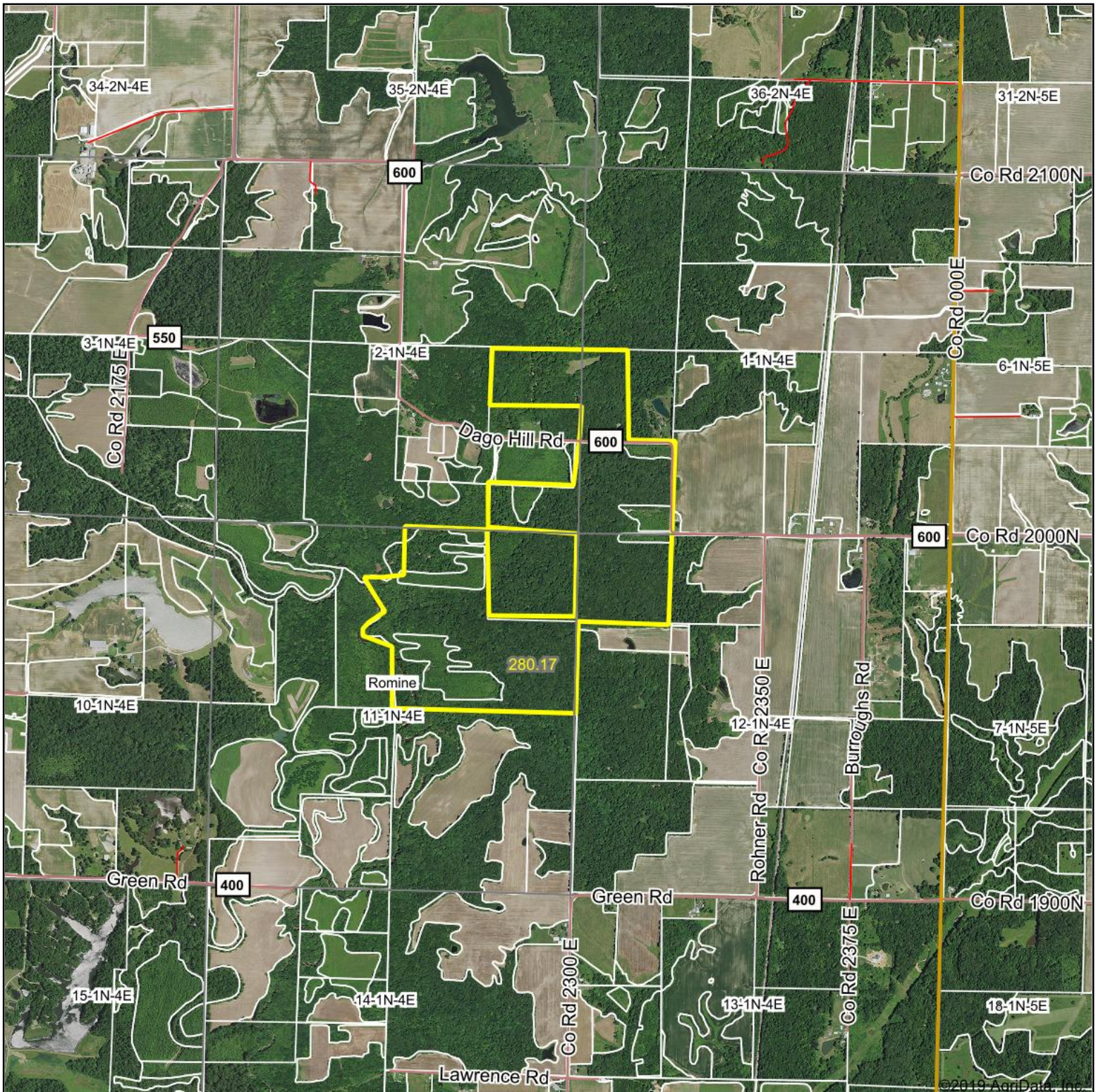


© AgriData, Inc. 2019

www.AgriDataInc.com

Field borders provided by Farm Service Agency as of 5/21/2008. Soils data provided by University of Illinois at Champaign-Urbana.

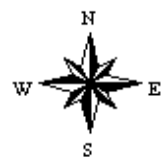
Aerial Map



Map Center: 38° 32' 49.18, -88° 43' 9.36

0ft 2260ft 4521ft

11-1N-4E
Marion County
Illinois



6/24/2019



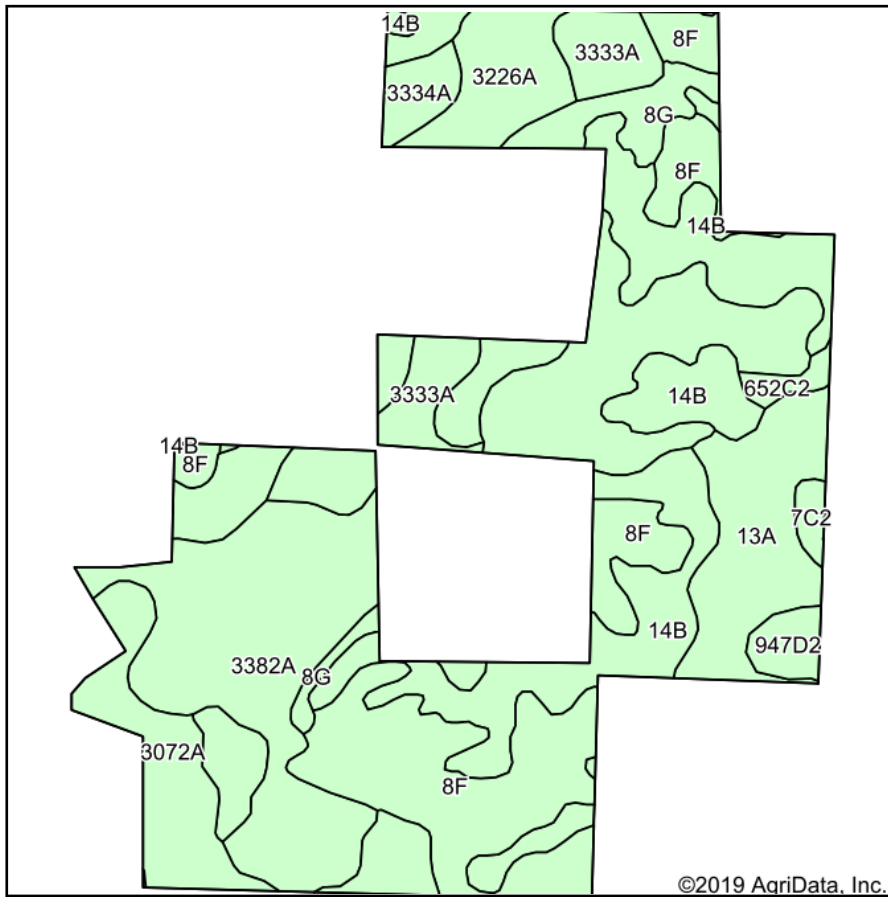
Maps Provided By:



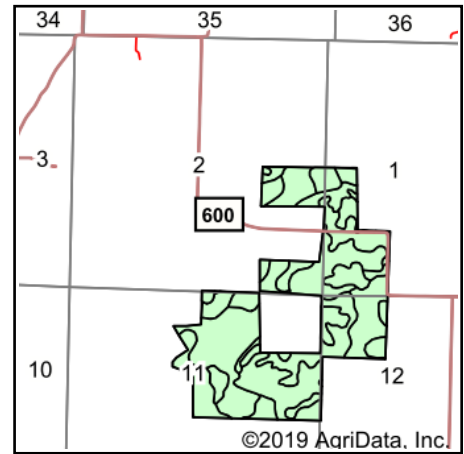
© AgriData, Inc. 2019 www.AgriDataInc.com

Field borders provided by Farm Service Agency as of 5/21/2008. Soils data provided by University of Illinois at Champaign-Urbana.

Soils Map



Soils data provided by USDA and NRCS.



State: **Illinois**
 County: **Marion**
 Location: **11-1N-4E**
 Township: **Romine**
 Acres: **280.17**
 Date: **6/24/2019**



Maps Provided By:



© AgriData, Inc. 2019

www.AgriDataInc.com



Area Symbol: IL121. Soil Area Version: 15

Code	Soil Description	Acres	Percent of field	Il. State Productivity Index Legend	Corn Bu/A	Soybeans Bu/A	Wheat Bu/A	Grass-legume hay, T/A	Crop productivity index for optimum management
**8F	Hickory silt loam, 18 to 35 percent slopes	77.61	27.7%		**86	**29	**35	0.00	**65
**14B	Ava silt loam, 2 to 5 percent slopes	50.95	18.2%		**134	**44	**54	0.00	**99
3382A	Belknap silt loam, 0 to 2 percent slopes, frequently flooded	44.80	16.0%		156	52	63	4.89	117
13A	Bluford silt loam, 0 to 2 percent slopes	21.63	7.7%		136	44	55	3.39	101
3072A	Sharon silt loam, 0 to 2 percent slopes, frequently flooded	20.52	7.3%		164	53	63	0.00	122
3226A	Wirt silt loam, 0 to 2 percent slopes, frequently flooded	19.10	6.8%		146	47	55	0.00	106
3333A	Wakeland silt loam, 0 to 2 percent slopes, frequently flooded	16.08	5.7%		174	56	68	5.14	128
**8G	Hickory silt loam, 35 to 60 percent slopes	8.67	3.1%		**58	**20	**24	0.00	**44
3108T	Bonnie silt loam, sodic, 0 to 2 percent slopes, frequently flooded	4.67	1.7%		149	49	59	4.64	111
8787A	Banlic silt loam, 0 to 2 percent slopes, occasionally flooded	4.49	1.6%		142	47	56	4.64	106
3334A	Birds silt loam, 0 to 2 percent slopes, frequently flooded	4.34	1.5%		157	51	61	0.00	117
**947D2	Hickory-Passport silt loams, 10 to 18 percent slopes, eroded	3.56	1.3%		**119	**39	**50	**3.18	**88
**652C2	Passport silt loam, 5 to 10 percent slopes, eroded	1.97	0.7%		**116	**39	**51	**3.85	**88
**7C2	Atlas silt loam, 5 to 10 percent slopes, eroded	1.70	0.6%		**105	**37	**41	**3.16	**81
3225A	Holton silt loam, 0 to 2 percent slopes, frequently flooded	0.08	0.0%		135	43	50	4.26	100

	Weighted Average	127.6	42	50.9	1.58	95
--	------------------	-------	----	------	------	----

Table: Optimum Crop Productivity Ratings for Illinois Soil by K.R. Olson and J.M. Lang, Office of Research, ACES, University of Illinois at Champaign-Urbana. Version: 1/2/2012 Amended Table S2 B811

Crop yields and productivity indices for optimum management (B811) are maintained at the following NRES web site: <http://soilproductivity.nres.illinois.edu/>

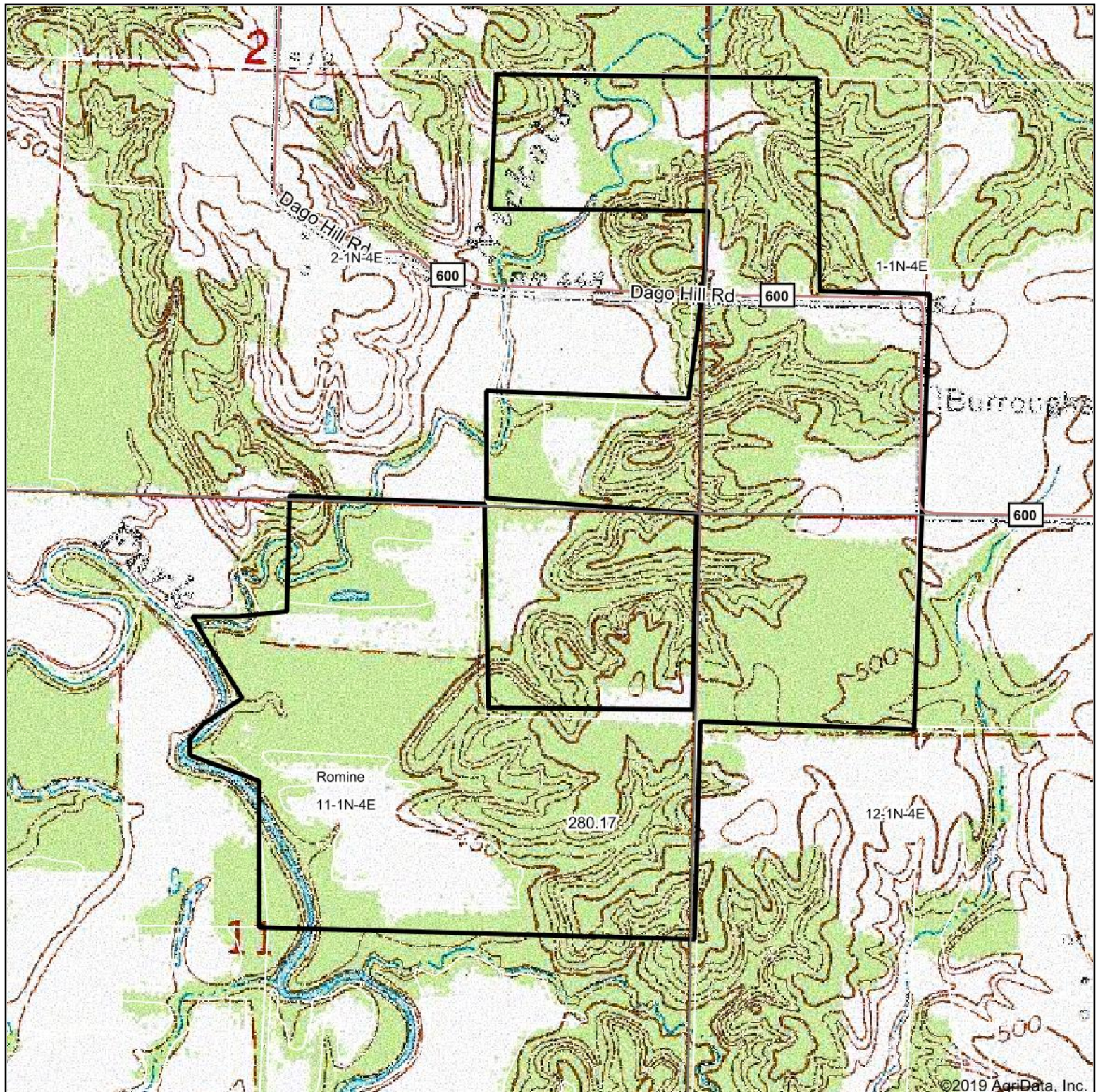
** Indexes adjusted for slope and erosion according to Bulletin 811 Table S3

e Soils in the well drained group were not rated for grass-legume and are shown with a zero "0".

*c: Using Capabilities Class Dominant Condition Aggregation Method

Soils data provided by USDA and NRCS. Soils data provided by University of Illinois at Champaign-Urbana.

Topography Map



map center: 38° 32' 49.1, -88° 43' 15.45

0ft 955ft 1909ft



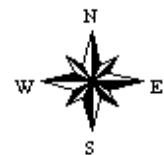
Maps Provided By:



© AgriData, Inc. 2019

www.AgridataInc.com

11-1N-4E
Marion County
Illinois



6/24/2019