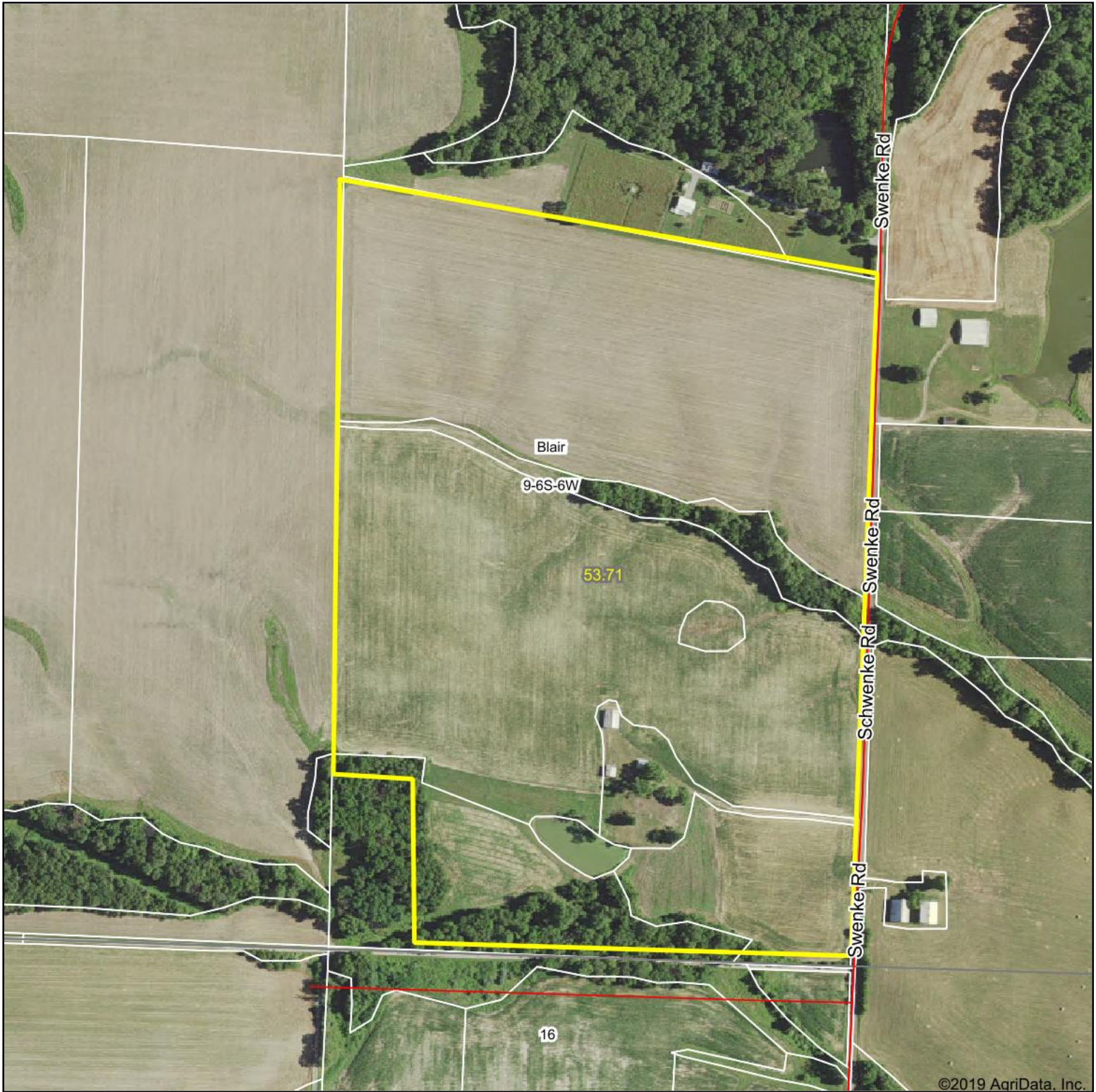
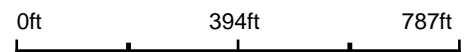


Aerial Map



©2019 AgriData, Inc.

Map Center: 38° 1' 6.6, -89° 46' 3



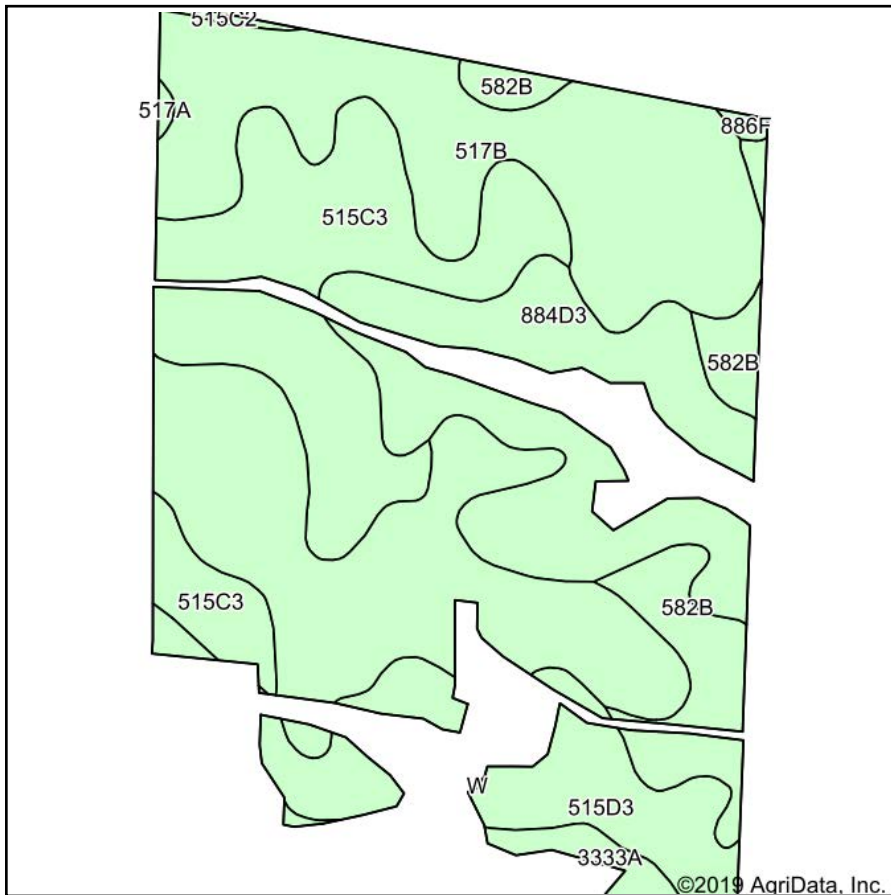
9-6S-6W
Randolph County
Illinois



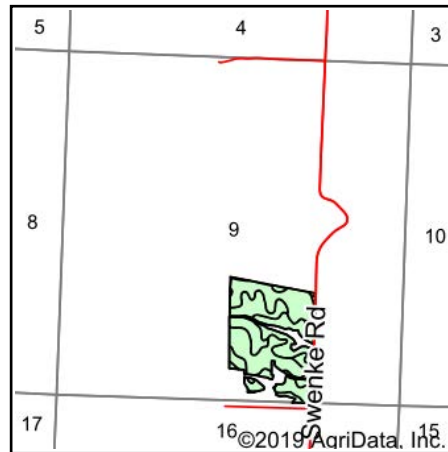
Maps Provided By:
 **surety**
CUSTOMIZED ONLINE MAPPING
© AgriData, Inc. 2019 www.AgriDataInc.com

10/17/2019

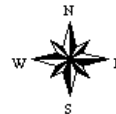
Soils Map



Soils data provided by USDA and NRCS.



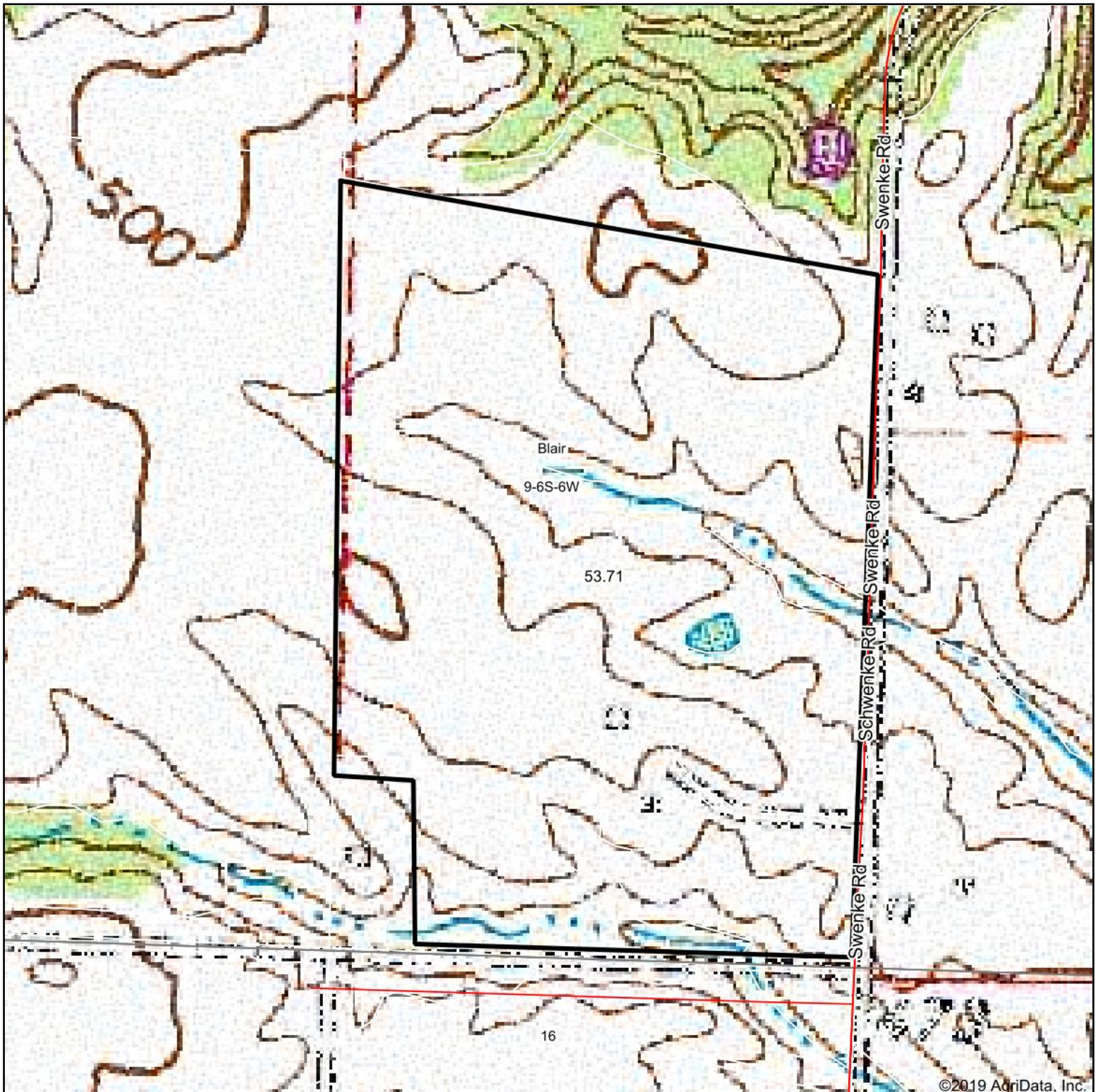
State: **Illinois**
 County: **Randolph**
 Location: **9-6S-6W**
 Township: **Blair**
 Acres: **45.63**
 Date: **10/21/2019**



Area Symbol: IL157. Soil Area Version: 12									
Code	Soil Description	Acres	Percent of field	Il. State Productivity Index Legend	Corn Bu/A	Soybeans Bu/A	Wheat Bu/A	Crop productivity index for optimum management	
**517B	Marine silt loam, 2 to 5 percent slopes	19.62	43.0%		**143	**45	**55	**103	
**515C3	Bunkum silty clay loam, 5 to 10 percent slopes, severely eroded	9.61	21.1%		**126	**43	**48	**95	
**884D3	Bunkum-Coulterville silty clay loams, 10 to 18 percent slopes, severely eroded	7.49	16.4%		**103	**34	**39	**77	
**515D3	Bunkum silty clay loam, 10 to 18 percent slopes, severely eroded	4.56	10.0%		**118	**41	**45	**89	
**582B	Homen silt loam, 2 to 5 percent slopes	3.36	7.4%		**149	**47	**55	**108	
3333A	Wakeland silt loam, 0 to 2 percent slopes, frequently flooded	0.69	1.5%		174	56	68	128	
**515C2	Bunkum silt loam, 5 to 10 percent slopes, eroded	0.12	0.3%		**136	**47	**52	**102	
**886F	Ruma-Ursa silt loams, 18 to 35 percent slopes	0.11	0.2%		**97	**31	**37	**71	
517A	Marine silt loam, 0 to 2 percent slopes	0.07	0.2%		144	45	56	104	
Weighted Average					131.1	42.7	50	96.3	

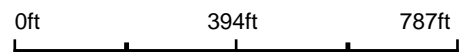
Table: Optimum Crop Productivity Ratings for Illinois Soil by K.R. Olson and J.M. Lang, Office of Research, ACES, University of Illinois at Champaign-Urbana. Version: 1/2/2012 Amended Table S2 B811
 Crop yields and productivity indices for optimum management (B811) are maintained at the following NRES web site: <http://soilproductivity.nres.illinois.edu/>
 ** Indexes adjusted for slope and erosion according to Bulletin 811 Table S3
 Soils data provided by USDA and NRCS. Soils data provided by University of Illinois at Champaign-Urbana.

Topography Map

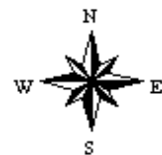


©2019 AgriData, Inc.

map center: 38° 1' 6.6, -89° 46' 3



9-6S-6W
Randolph County
Illinois



10/17/2019



Maps Provided By:



© AgriData, Inc. 2019 www.AgriDataInc.com