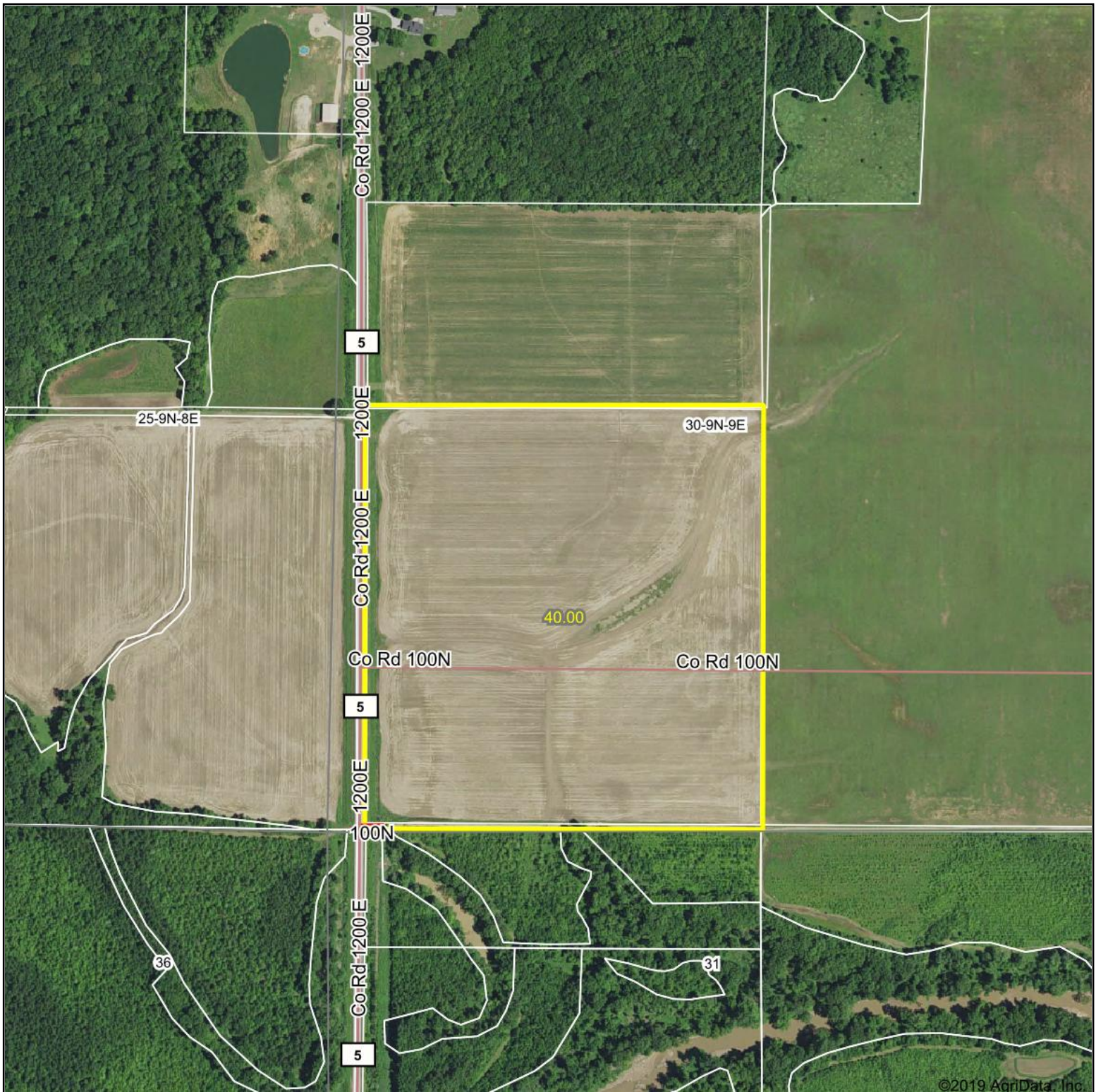


Aerial Map



©2019 AgriData, Inc.

Map Center: 39° 11' 17.45, -88° 14' 43.14

0ft 499ft 997ft

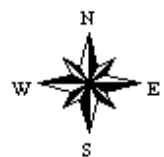


Maps Provided By:



© AgriData, Inc. 2019 www.AgriDataInc.com

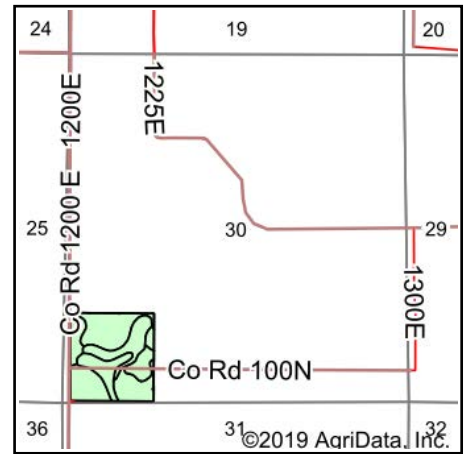
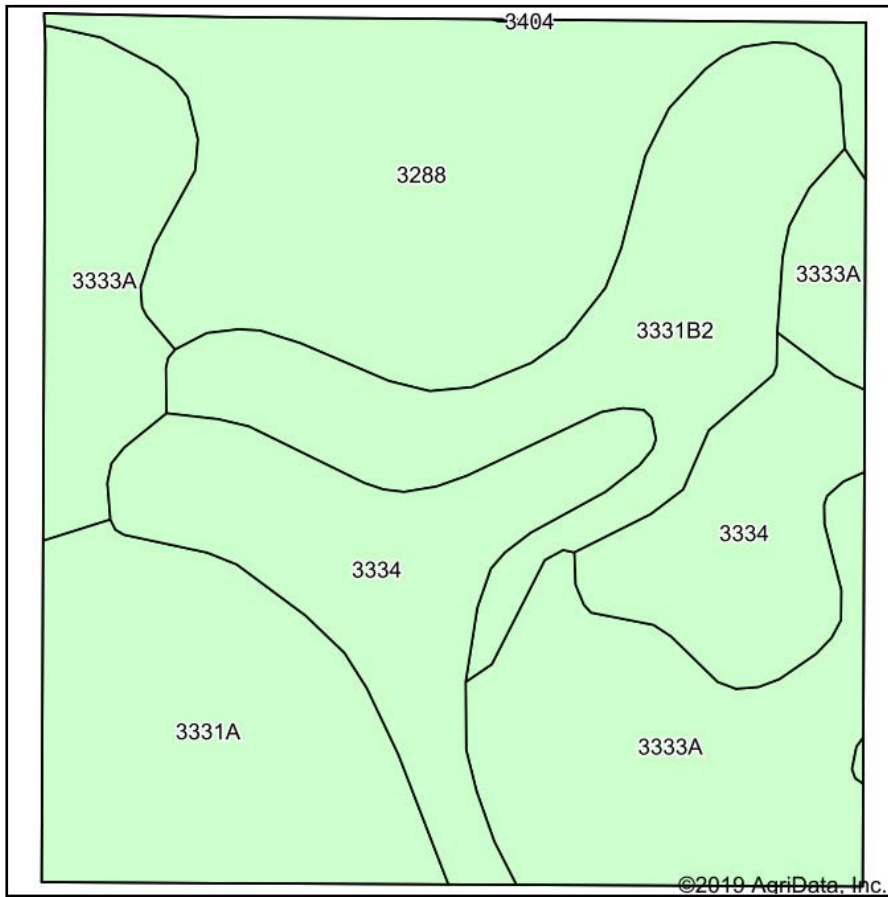
30-9N-9E
Cumberland County
Illinois



10/10/2019

Field borders provided by Farm Service Agency as of 5/21/2008. Soils data provided by University of Illinois at Champaign-Urbana.

Soils Map



State: **Illinois**
 County: **Cumberland**
 Location: **25-9N-8E**
 Township: **Woodbury**
 Acres: **38.9**
 Date: **10/10/2019**



Maps Provided By:



Area Symbol: IL035. Soil Area Version: 13							
Code	Soil Description	Acres	Percent of field	Il. State Productivity Index Legend	Corn Bu/A	Soybeans Bu/A	Crop productivity index for optimum management
3288	Petrolia silty clay loam, frequently flooded	9.37	24.1%		162	49	117
3333A	Wakeland silt loam, 0 to 2 percent slopes, frequently flooded	9.35	24.0%		174	56	128
3334	Birds silt loam, frequently flooded	7.80	20.1%		157	51	117
3331B2	Haymond silt loam 2 to 5 percent slopes, eroded, frequently flooded	6.38	16.4%		181	56	132
3331A	Haymond silt loam, 0 to 2 percent slopes, frequently flooded	6.00	15.4%		181	56	132
Weighted Average					169.9	53.3	124.4

Table: Optimum Crop Productivity Ratings for Illinois Soil by K.R. Olson and J.M. Lang, Office of Research, ACES, University of Illinois at Champaign-Urbana. Version: 1/2/2012 Amended Table S2 B811

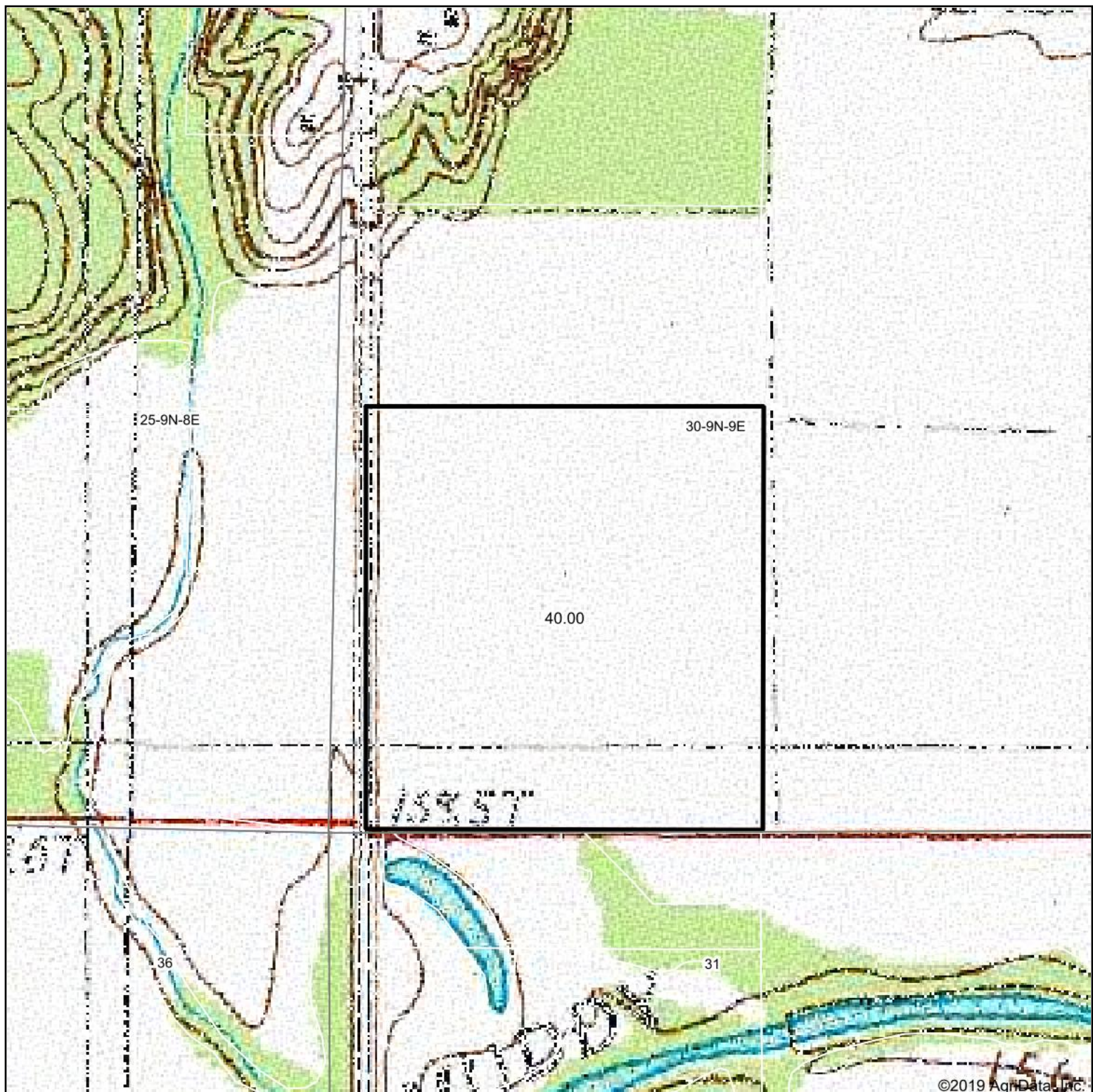
Crop yields and productivity indices for optimum management (B811) are maintained at the following NRES web site: <http://soilproductivity.nres.illinois.edu/>

** Indexes adjusted for slope and erosion according to Bulletin 811 Table S3

*c: Using Capabilities Class Dominant Condition Aggregation Method

Soils data provided by USDA and NRCS. Soils data provided by University of Illinois at Champaign-Urbana.

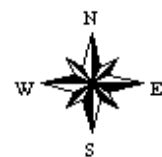
Topography Map



map center: 39° 11' 17.45, -88° 14' 43.14

0ft 499ft 997ft

30-9N-9E
Cumberland County
Illinois



10/10/2019



Maps Provided By:



© AgriData, Inc. 2019

www.AgrIDataInc.com

Field borders provided by Farm Service Agency as of 5/21/2008. Soils data provided by University of Illinois at Champaign-Urbana.