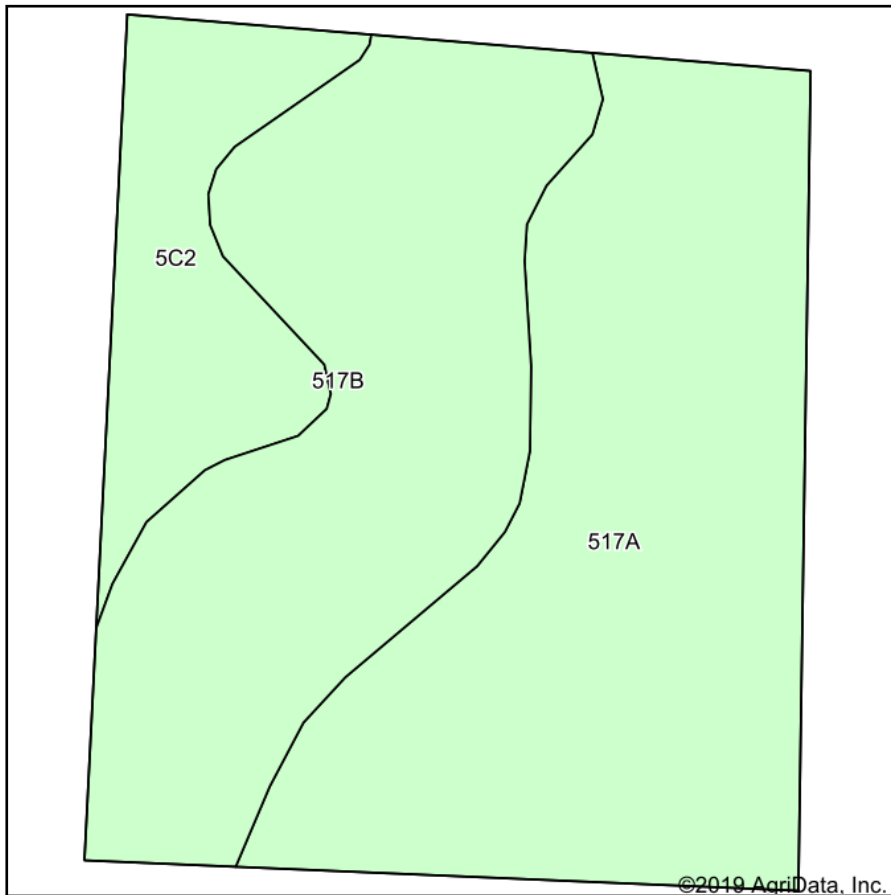
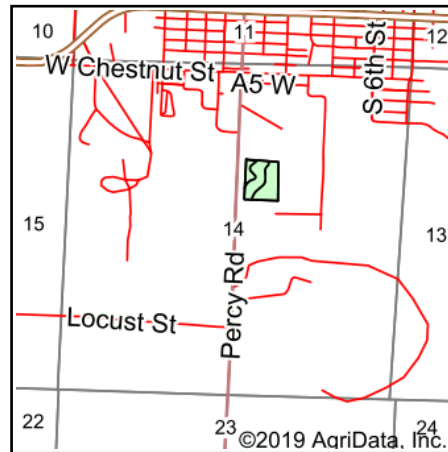


# Soils Map



Soils data provided by USDA and NRCS.



State: **Illinois**  
 County: **Randolph**  
 Location: **14-6S-5W**  
 Township: **Percy**  
 Acres: **7.4**  
 Date: **10/13/2019**



Maps Provided By:



© AgriData, Inc. 2019

www.AgriDataInc.com



Area Symbol: IL157, Soil Area Version: 12								
Code	Soil Description	Acres	Percent of field	Il. State Productivity Index Legend	Corn Bu/A	Soybeans Bu/A	Wheat Bu/A	Crop productivity index for optimum management
517A	Marine silt loam, 0 to 2 percent slopes	3.60	48.6%		144	45	56	104
**517B	Marine silt loam, 2 to 5 percent slopes	2.81	38.0%		**143	**45	**55	**103
**5C2	Blair silt loam, 5 to 10 percent slopes, eroded	0.99	13.4%		**124	**41	**50	**94
<b>Weighted Average</b>					<b>140.9</b>	<b>44.5</b>	<b>54.8</b>	<b>102.3</b>

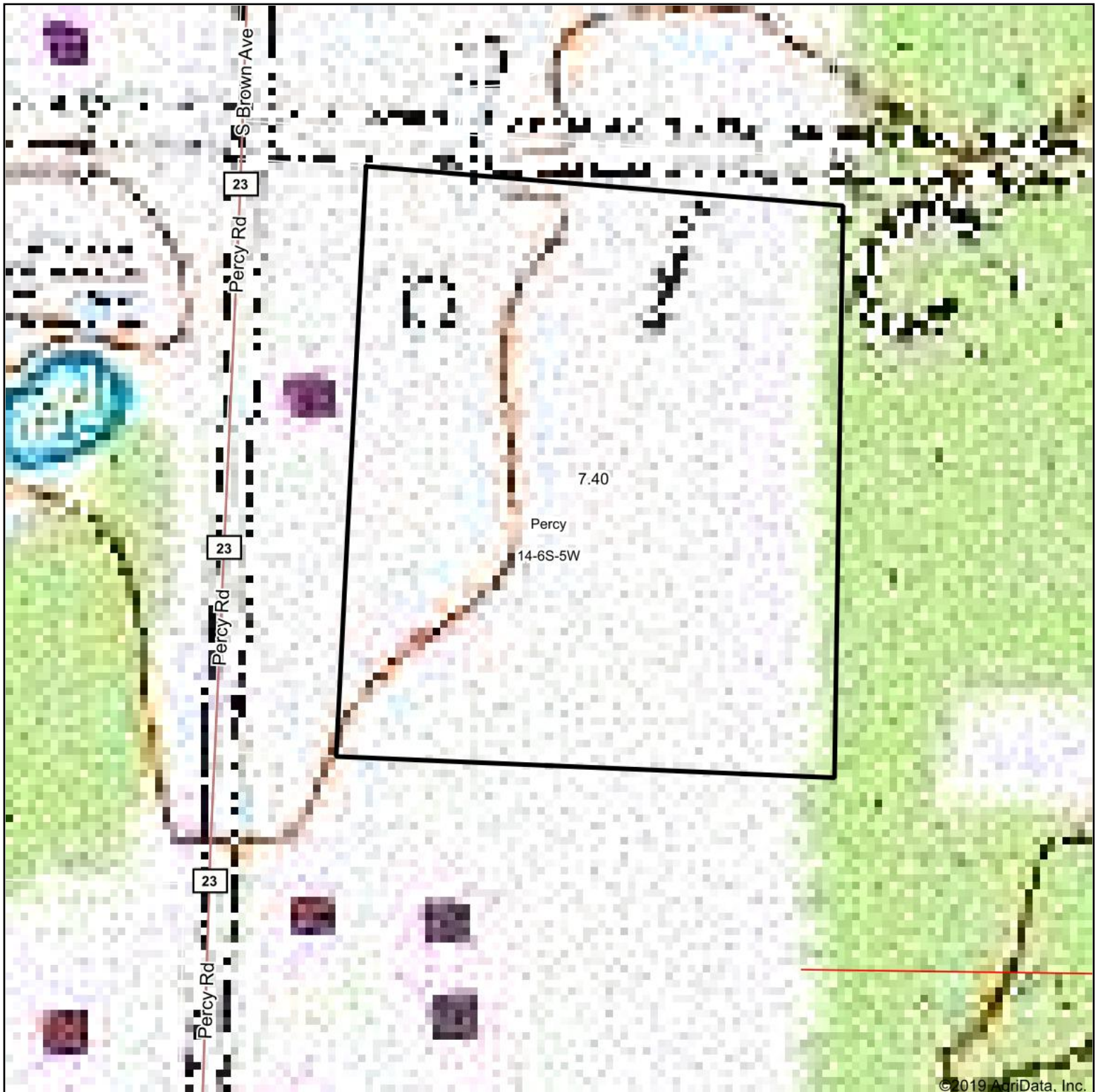
**Table: Optimum Crop Productivity Ratings for Illinois Soil by K.R. Olson and J.M. Lang, Office of Research, ACES, University of Illinois at Champaign-Urbana.** Version: 1/2/2012 Amended Table S2 B811

Crop yields and productivity indices for optimum management (B811) are maintained at the following NRES web site: <http://soilproductivity.nres.illinois.edu/>

\*\* Indexes adjusted for slope and erosion according to Bulletin 811 Table S3

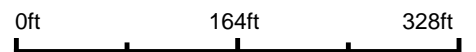
Soils data provided by USDA and NRCS. Soils data provided by University of Illinois at Champaign-Urbana.

# Topography Map

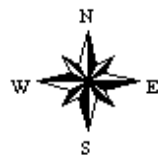


©2019 AgriData, Inc.

map center: 38° 0' 32.79, -89° 37' 13.03



**14-6S-5W**  
**Randolph County**  
**Illinois**



10/13/2019



Maps Provided By:



© AgriData, Inc. 2019

www.AgridataInc.com