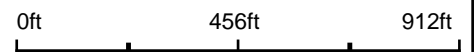


Aerial Map



©2019 AgriData, Inc.

Map Center: 37° 46' 55.34, -89° 37' 55.02



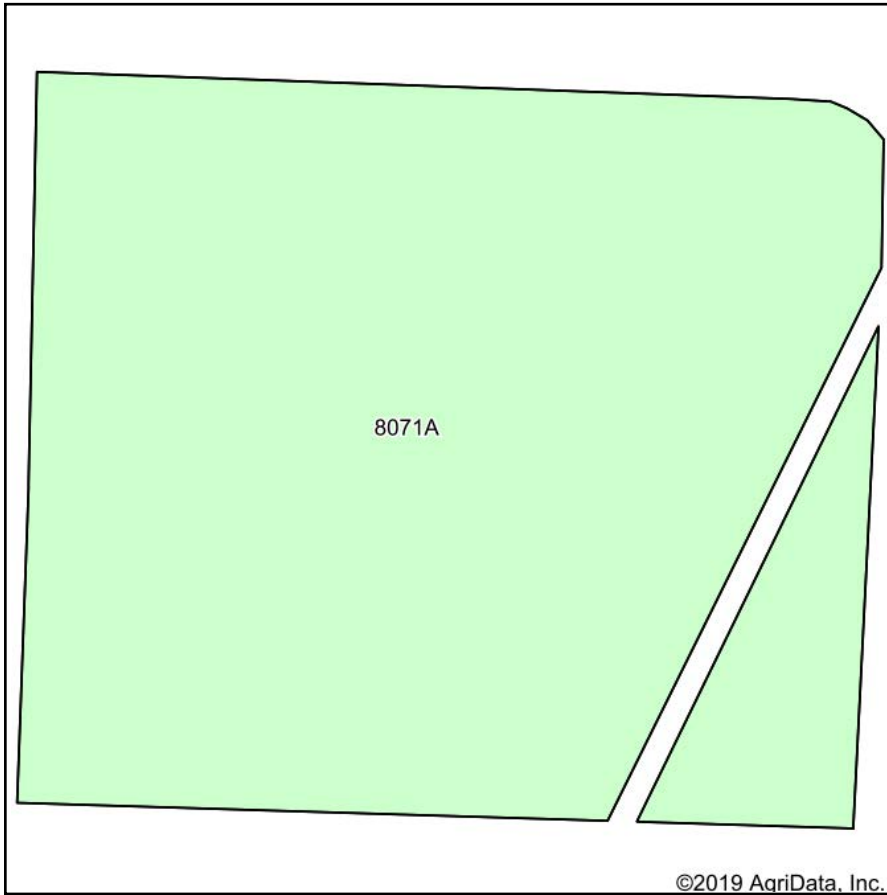
35-8S-5W
Jackson County
Illinois



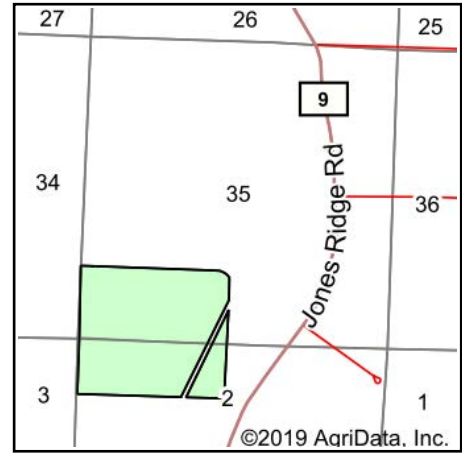
Maps Provided By:
 **surety**[®]
CUSTOMIZED ONLINE MAPPING
© AgriData, Inc. 2019 www.AgriDataInc.com

9/6/2019

Soils Map



Soils data provided by USDA and NRCS.



State: **Illinois**
 County: **Jackson**
 Location: **35-8S-5W**
 Township: **Degognia**
 Acres: **131.52**
 Date: **9/6/2019**



Maps Provided By:



Area Symbol: IL077. Soil Area Version: 18								
Code	Soil Description	Acres	Percent of field	Il. State Productivity Index Legend	Corn Bu/A	Soybeans Bu/A	Wheat Bu/A	Crop productivity index for optimum management
8071A	Darwin silty clay, 0 to 2 percent slopes, occasionally flooded	131.52	100.0%		149	50	60	111
Weighted Average					149	50	60	111

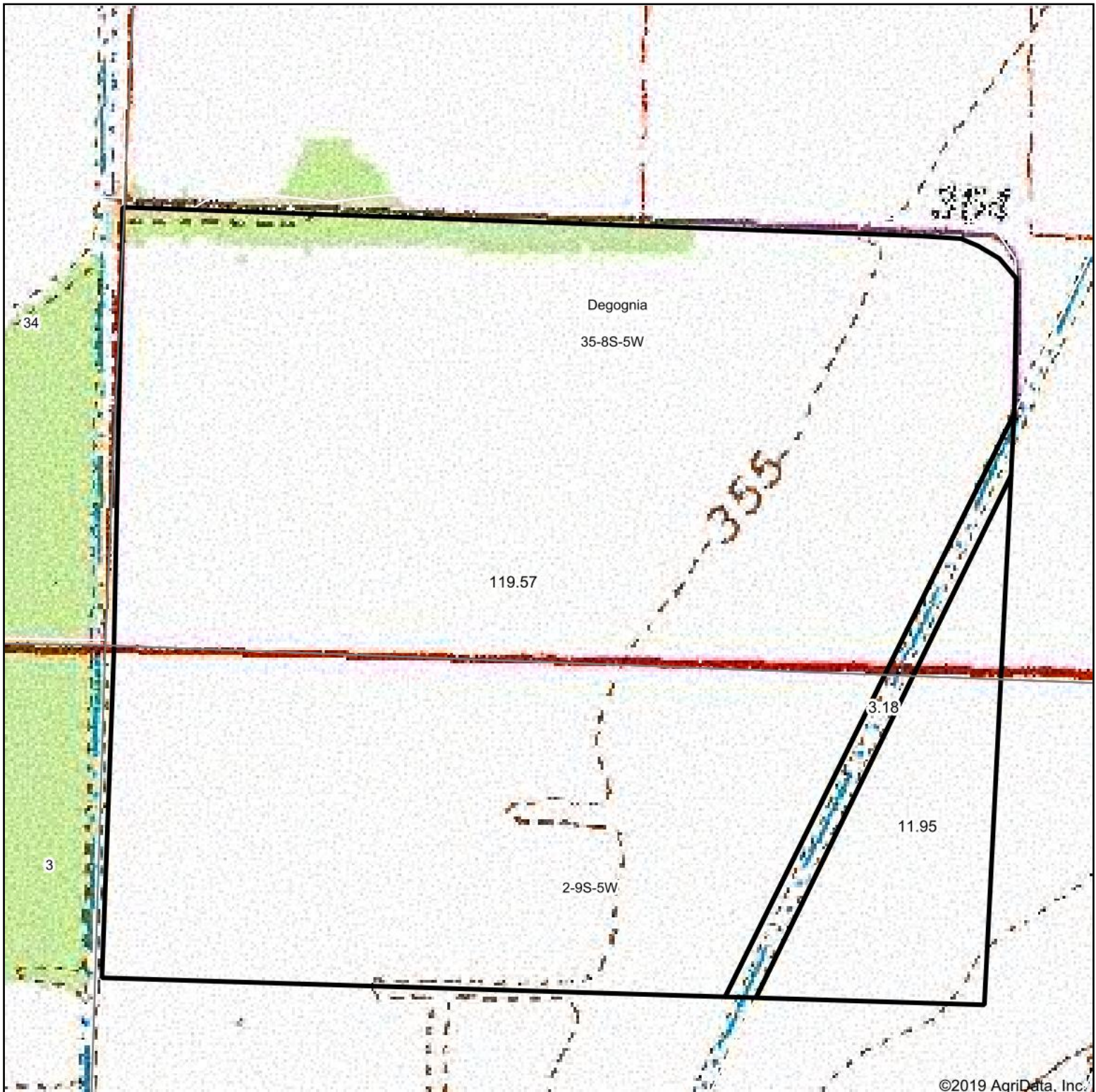
Table: Optimum Crop Productivity Ratings for Illinois Soil by K.R. Olson and J.M. Lang, Office of Research, ACES, University of Illinois at Champaign-Urbana. Version: 1/2/2012 Amended Table S2 B811

Crop yields and productivity indices for optimum management (B811) are maintained at the following NRES web site: <http://soilproductivity.nres.illinois.edu/>

** Indexes adjusted for slope and erosion according to Bulletin 811 Table S3

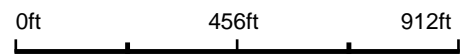
Soils data provided by USDA and NRCS. Soils data provided by University of Illinois at Champaign-Urbana.

Topography Map

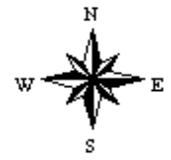


©2019 AgriData, Inc.

map center: 37° 46' 55.34, -89° 37' 55.02



35-8S-5W
Jackson County
Illinois



9/6/2019

Field borders provided by Farm Service Agency as of 5/21/2008. Soils data provided by University of Illinois at Champaign-Urbana.