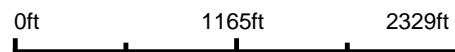


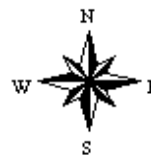
# Aerial Map



Map Center: 38° 17' 53.43, -88° 48' 56.46



**1-3S-3E**  
**Jefferson County**  
**Illinois**



9/8/2019



Maps Provided By:



© AgriData, Inc. 2019 www.AgriDataInc.com



# Aerial Map

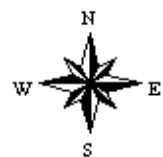


©2019 AgriData, Inc.

Map Center: 38° 17' 53.43, -88° 48' 57.05



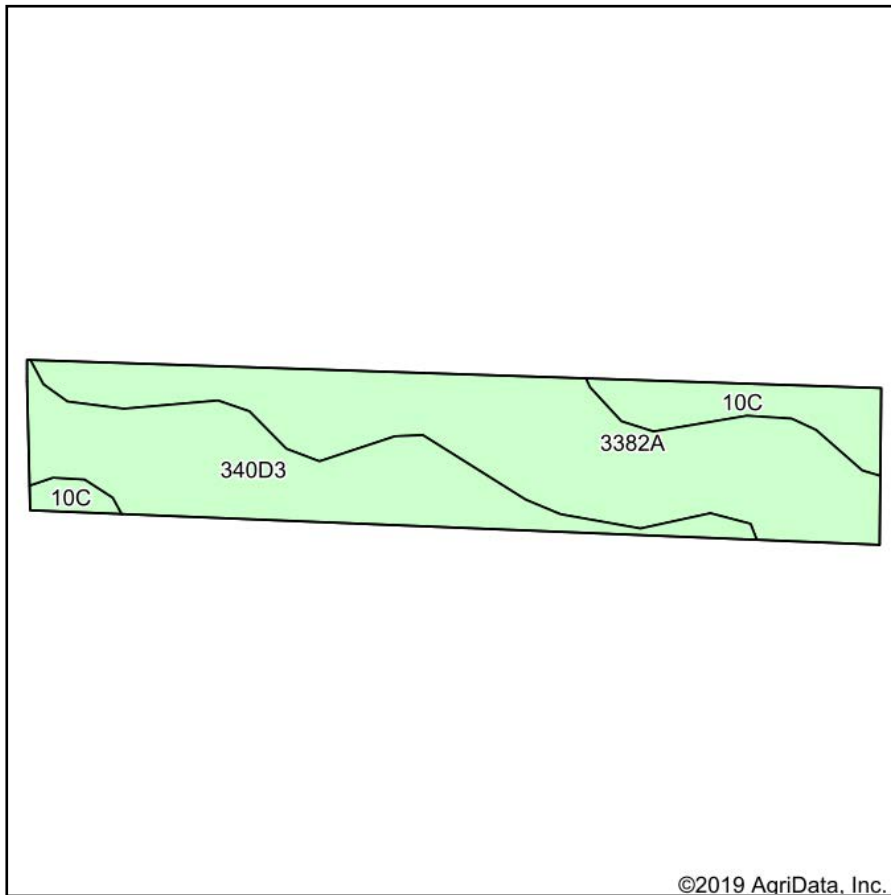
**1-3S-3E**  
**Jefferson County**  
**Illinois**



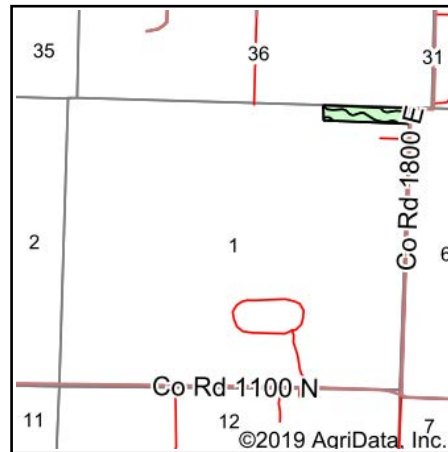
Maps Provided By:  
 **surety**<sup>®</sup>  
CUSTOMIZED ONLINE MAPPING  
© AgriData, Inc. 2019      www.AgriDataInc.com

9/8/2019

# Soils Map



Soils data provided by USDA and NRCS.



State: **Illinois**  
 County: **Jefferson**  
 Location: **1-3S-3E**  
 Township: **Dodds**  
 Acres: **7.05**  
 Date: **9/8/2019**



Area Symbol: IL081, Soil Area Version: 11									
Code	Soil Description	Acres	Percent of field	Il. State Productivity Index Legend	Corn Bu/A	Soybeans Bu/A	Wheat Bu/A	Grass-legume hay, T/A	eCrop productivity index for optimum management
3382A	Belknap silt loam, 0 to 2 percent slopes, frequently flooded	3.72	52.8%		156	52	63	4.89	117
**340D3	Zanesville silt loam, till plain, 10 to 18 percent slopes, severely eroded	2.49	35.3%		**86	**30	**37	**2.68	**65
**10C	Plumfield silty clay loam, 5 to 10 percent slopes	0.84	11.9%		**103	**34	**39	**3.37	**78
<b>Weighted Average</b>					<b>125</b>	<b>42.1</b>	<b>51</b>	<b>3.93</b>	<b>94</b>

**Table: Optimum Crop Productivity Ratings for Illinois Soil by K.R. Olson and J.M. Lang, Office of Research, ACES, University of Illinois at Champaign-Urbana.** Version: 1/2/2012 Amended Table S2 B811

Crop yields and productivity indices for optimum management (B811) are maintained at the following NRES web site: <http://soilproductivity.nres.illinois.edu/>

\*\* Indexes adjusted for slope and erosion according to Bulletin 811 Table S3

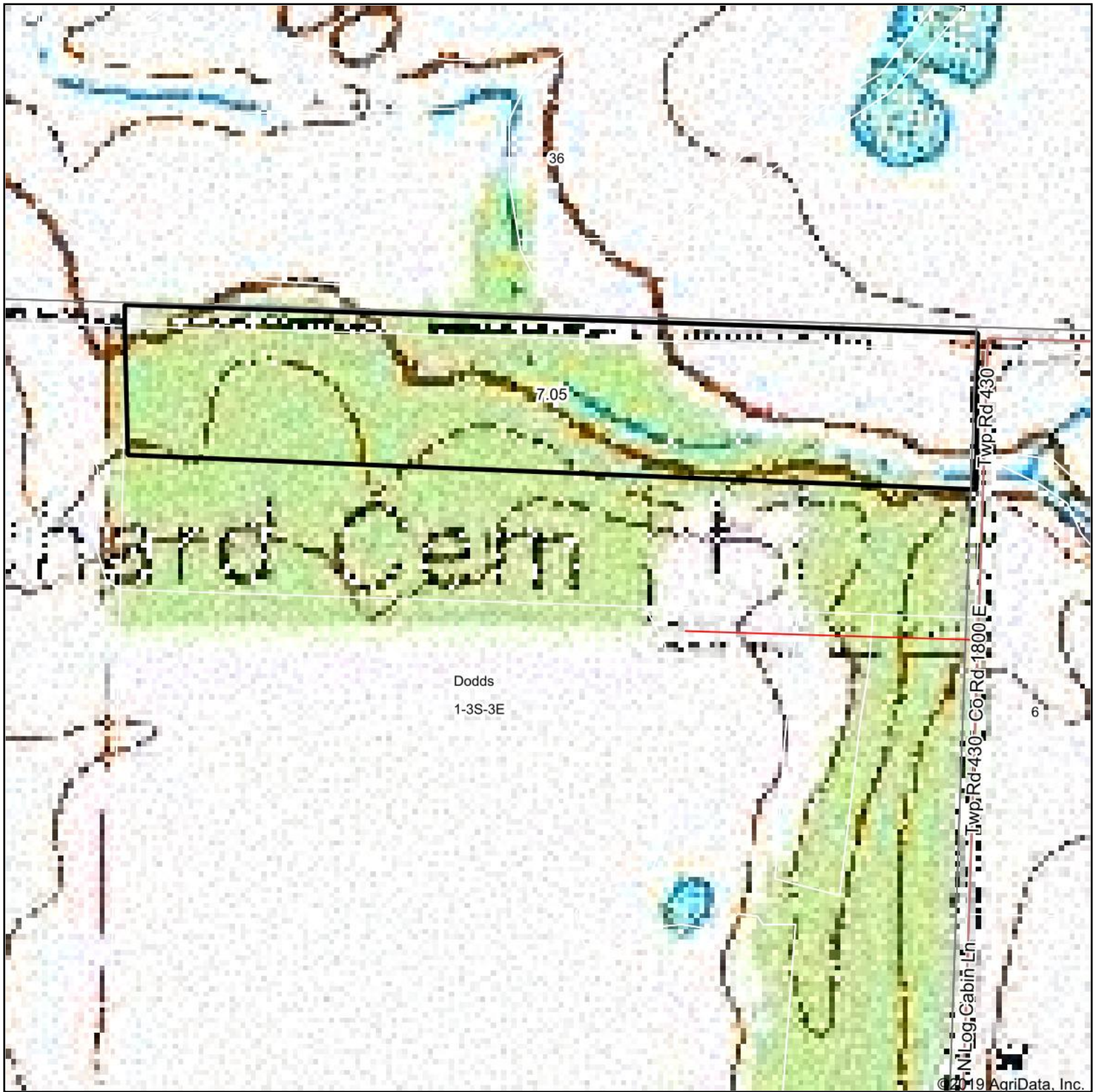
e Soils in the well drained group were not rated for grass-legume and are shown with a zero "0".

\*c: Using Capabilities Class Dominant Condition Aggregation Method

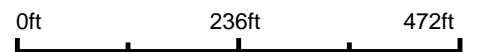
Soils data provided by USDA and NRCS. Soils data provided by University of Illinois at Champaign-Urbana.



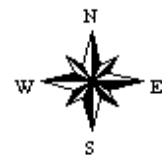
# Topography Map



map center: 38° 17' 53.43, -88° 48' 57.05



**1-3S-3E**  
**Jefferson County**  
**Illinois**



9/8/2019



Maps Provided By:



© AgriData, Inc. 2019 www.AgridataInc.com