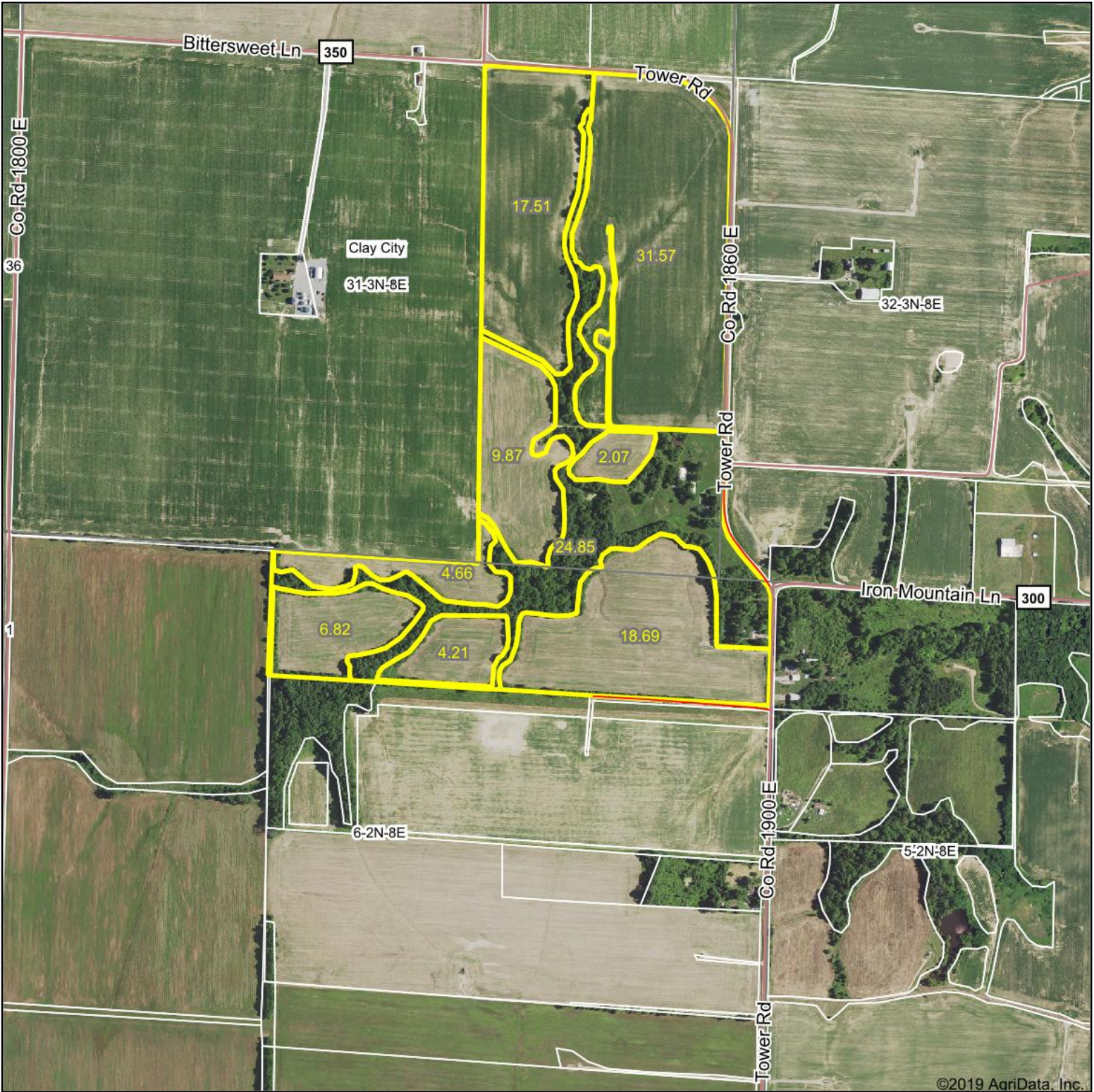
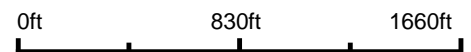


Aerial Map

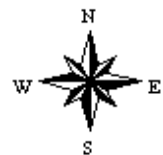


©2019 AgriData, Inc.

Map Center: 38° 38' 48.17, -88° 21' 12.75

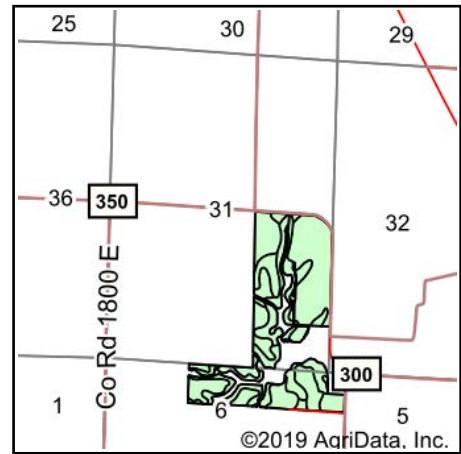


31-3N-8E
Clay County
Illinois



7/30/2019

Soils Map



State: **Illinois**
 County: **Clay**
 Location: **31-3N-8E**
 Township: **Clay City**
 Acres: **95.4**
 Date: **7/30/2019**



Area Symbol: IL025, Soil Area Version: 13									
Code	Soil Description	Acres	Percent of field	Il. State Productivity Index Legend	Corn Bu/A	Soybeans Bu/A	Wheat Bu/A	Grass-legume e hay, T/A	Crop productivity index for optimum management
3A	Hoyleton silt loam, 0 to 2 percent slopes	33.92	35.6%		146	46	58	4.64	108
13A	Bluford silt loam, 0 to 2 percent slopes	24.38	25.6%		136	44	55	3.39	101
**652C2	Passport silt loam, 5 to 10 percent slopes, eroded	16.77	17.6%		**116	**39	**51	**3.85	**88
**934C2	Blair-Grantfork complex, 5 to 10 percent slopes, eroded	12.01	12.6%		**114	**40	**45	**3.55	**88
**3B	Hoyleton silt loam, 2 to 5 percent slopes	3.00	3.1%		**145	**46	**57	**4.59	**107
**13B2	Bluford silt loam, 2 to 5 percent slopes, eroded	2.76	2.9%		**129	**42	**52	**3.22	**96
12A	Wynoose silt loam, 0 to 2 percent slopes	1.53	1.6%		128	42	51	4.26	97
2A	Cisne silt loam, 0 to 2 percent slopes	1.03	1.1%		149	46	59	4.64	109
Weighted Average					133.4	43.3	54.1	4.00	99.6

Table: Optimum Crop Productivity Ratings for Illinois Soil by K.R. Olson and J.M. Lang, Office of Research, ACES, University of Illinois at Champaign-Urbana. Version: 1/2/2012 Amended Table S2 B811

Crop yields and productivity indices for optimum management (B811) are maintained at the following NRES web site: <http://soilproductivity.nres.illinois.edu/>

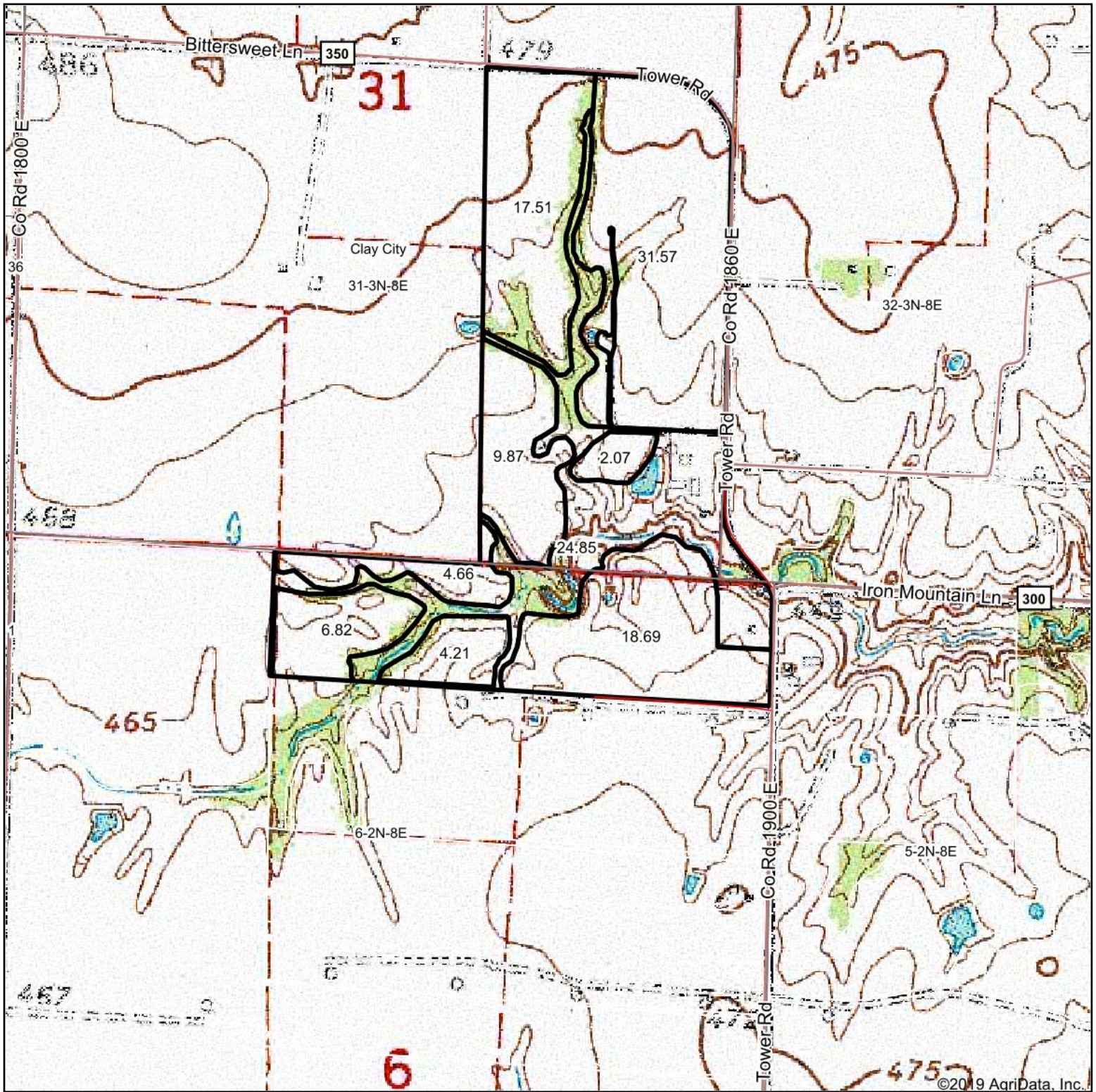
** Indexes adjusted for slope and erosion according to Bulletin 811 Table S3

e Soils in the well drained group were not rated for grass-legume and are shown with a zero "0".

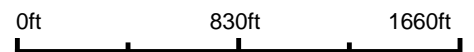
*c: Using Capabilities Class Dominant Condition Aggregation Method

Soils data provided by USDA and NRCS. Soils data provided by University of Illinois at Champaign-Urbana.

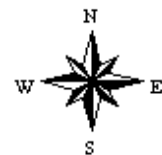
Topography Map



map center: 38° 38' 48.17, -88° 21' 12.75



31-3N-8E
Clay County
Illinois



7/30/2019



Maps Provided By:



© AgriData, Inc. 2019 www.AgridataInc.com