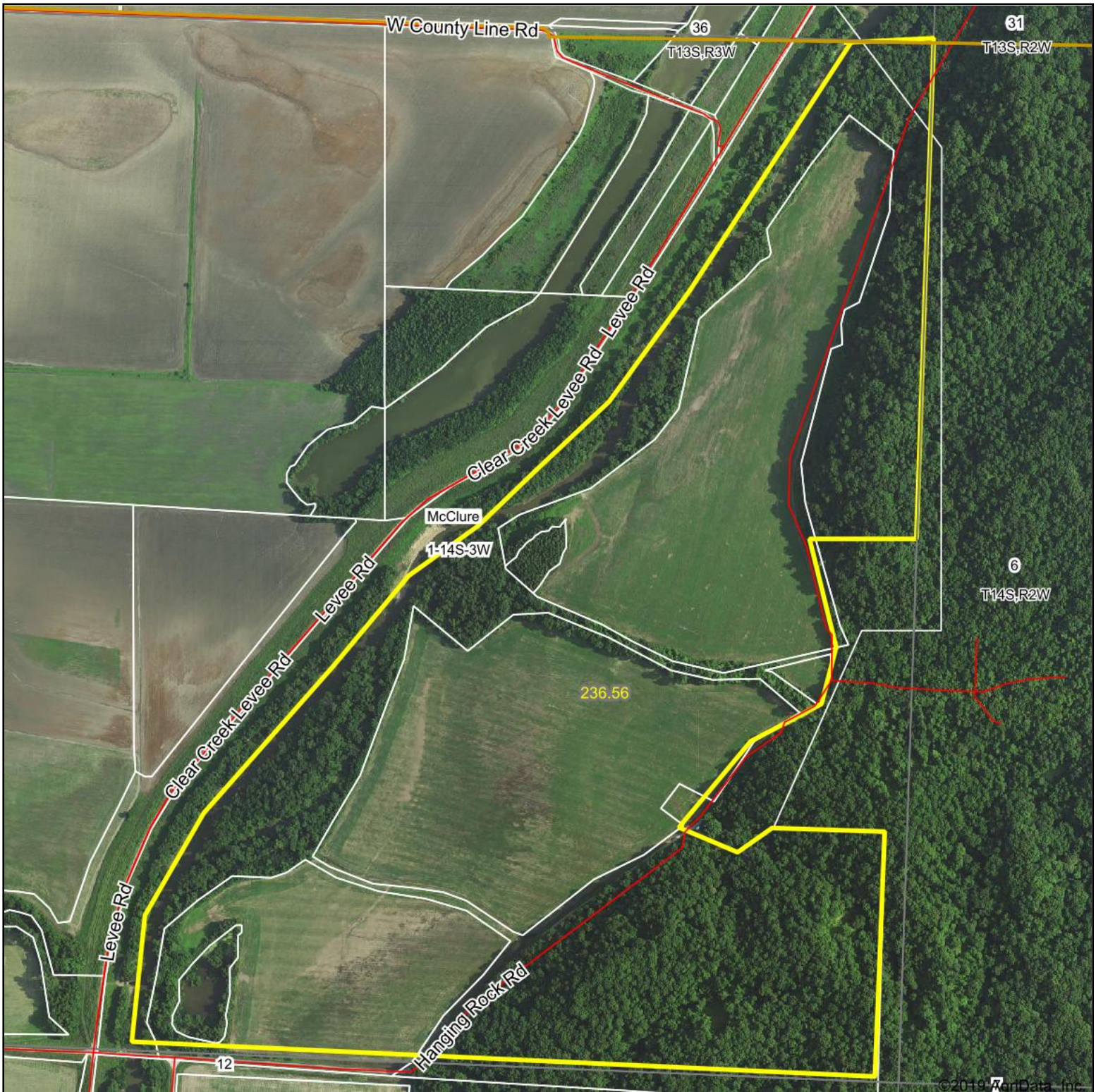


Aerial Map



©2019 AgriData, Inc.

Map Center: 37° 19' 38.73, -89° 23' 12.59

0ft 768ft 1535ft



Maps Provided By:



© AgriData, Inc. 2019

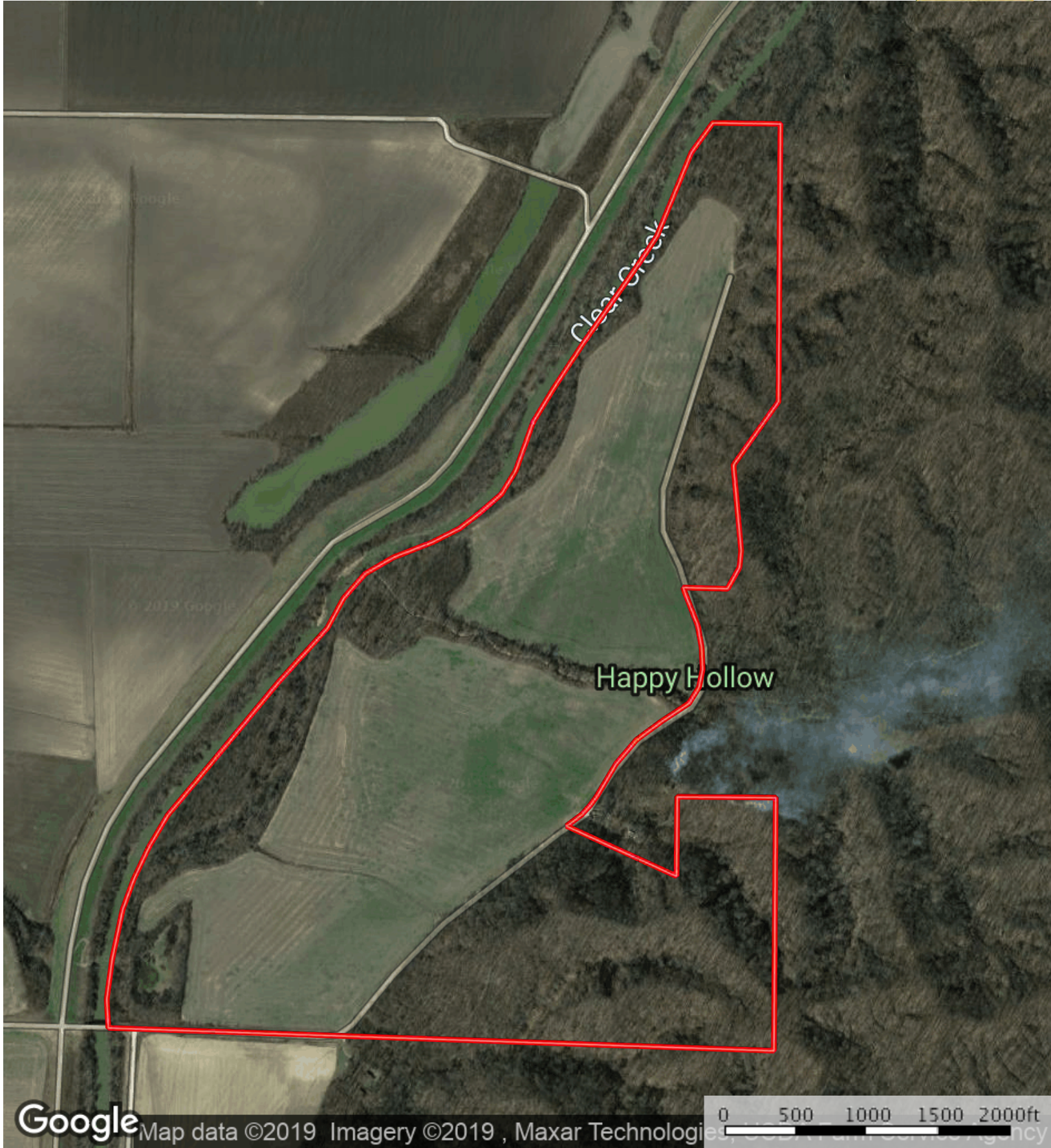
www.AgriDataInc.com

1-14S-3W
Alexander County
Illinois



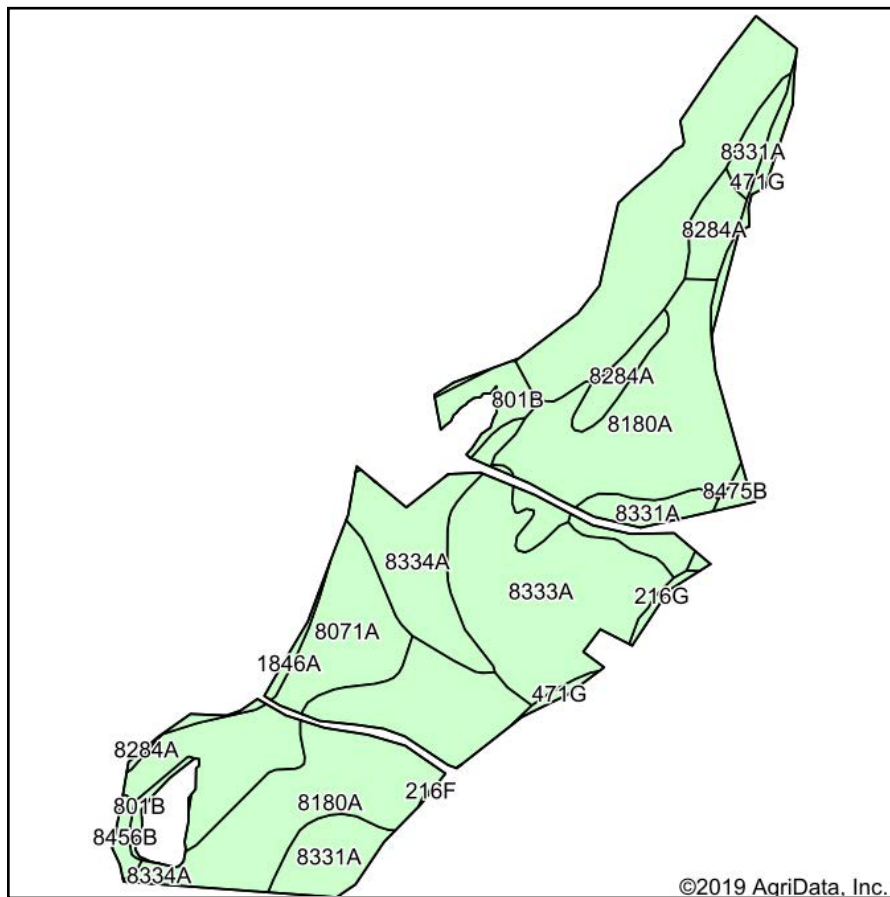
7/22/2019

Field borders provided by Farm Service Agency as of 5/21/2008. Soils data provided by University of Illinois at Champaign-Urbana.

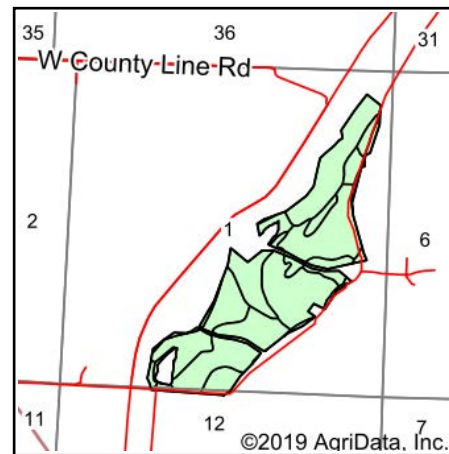


Boundary

Soils Map



Soils data provided by USDA and NRCS.



State: **Illinois**
 County: **Alexander**
 Location: **1-14S-3W**
 Township: **McClure**
 Acres: **128.01**
 Date: **7/22/2019**



Maps Provided By:



© AgriData, Inc. 2019

www.AgriDataInc.com



Area Symbol: IL003. Soil Area Version: 15								
Code	Soil Description	Acres	Percent of field	Il. State Productivity Index Legend	Corn Bu/A	Soybeans Bu/A	Wheat Bu/A	Crop productivity index for optimum management
8180A	Dupo silt loam, 0 to 2 percent slopes, occasionally flooded	41.46	32.4%		182	56	68	131
8071A	Darwin silty clay, 0 to 2 percent slopes, occasionally flooded	34.56	27.0%		149	50	60	111
8333A	Wakeland silt loam, 0 to 2 percent slopes, occasionally flooded	18.95	14.8%		174	56	68	128
8334A	Birds silt loam, 0 to 2 percent slopes, occasionally flooded	10.37	8.1%		157	51	61	117
8331A	Haymond silt loam, 0 to 3 percent slopes, occasionally flooded	9.85	7.7%		181	56	70	132
8284A	Tice silty clay loam, 0 to 2 percent slopes, occasionally flooded	4.82	3.8%		184	57	70	134
801B	Orthents, silty, undulating	3.07	2.4%					
**471G	Clarksville gravelly silt loam, 35 to 70 percent slopes	1.90	1.5%		**35	**13	**14	**27
1846A	Karnak and Cape silty clays, undrained, 0 to 2 percent slopes, frequently flooded	1.02	0.8%		134	46	56	103
8456B	Ware loam, 1 to 6 percent slopes, occasionally flooded	0.80	0.6%		159	51	63	118
8475B	Elsah silt loam, 1 to 4 percent slopes, occasionally flooded	0.73	0.6%		147	49	56	110
**216G	Stookey silt loam, 35 to 70 percent slopes	0.48	0.4%		**77	**24	**28	**55
Weighted Average					162.2	51.7	62.7	118.8

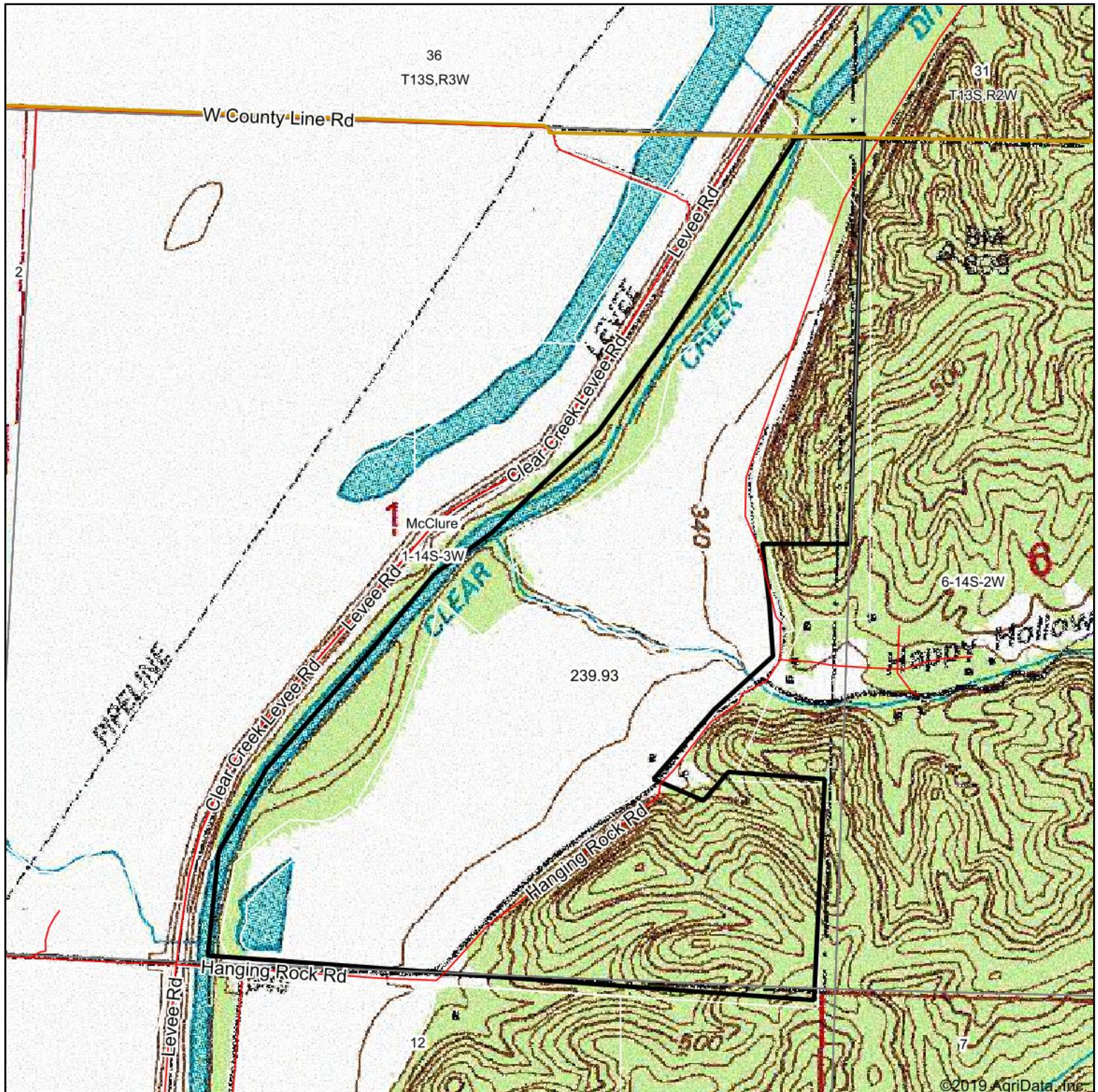
Table: Optimum Crop Productivity Ratings for Illinois Soil by K.R. Olson and J.M. Lang, Office of Research, ACES, University of Illinois at Champaign-Urbana. Version: 1/2/2012 Amended Table S2 B811

Crop yields and productivity indices for optimum management (B811) are maintained at the following NRES web site: <http://soilproductivity.nres.illinois.edu/>

** Indexes adjusted for slope and erosion according to Bulletin 811 Table S3

Soils data provided by USDA and NRCS. Soils data provided by University of Illinois at Champaign-Urbana.

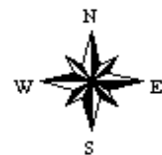
Topography Map



map center: 37° 19' 38.92, -89° 23' 12.49

0ft 935ft 1870ft

1-14S-3W
Alexander County
Illinois



7/22/2019



Maps Provided By:



© AgriData, Inc. 2019

www.AgriDataInc.com

Field borders provided by Farm Service Agency as of 5/21/2008. Soils data provided by University of Illinois at Champaign-Urbana.