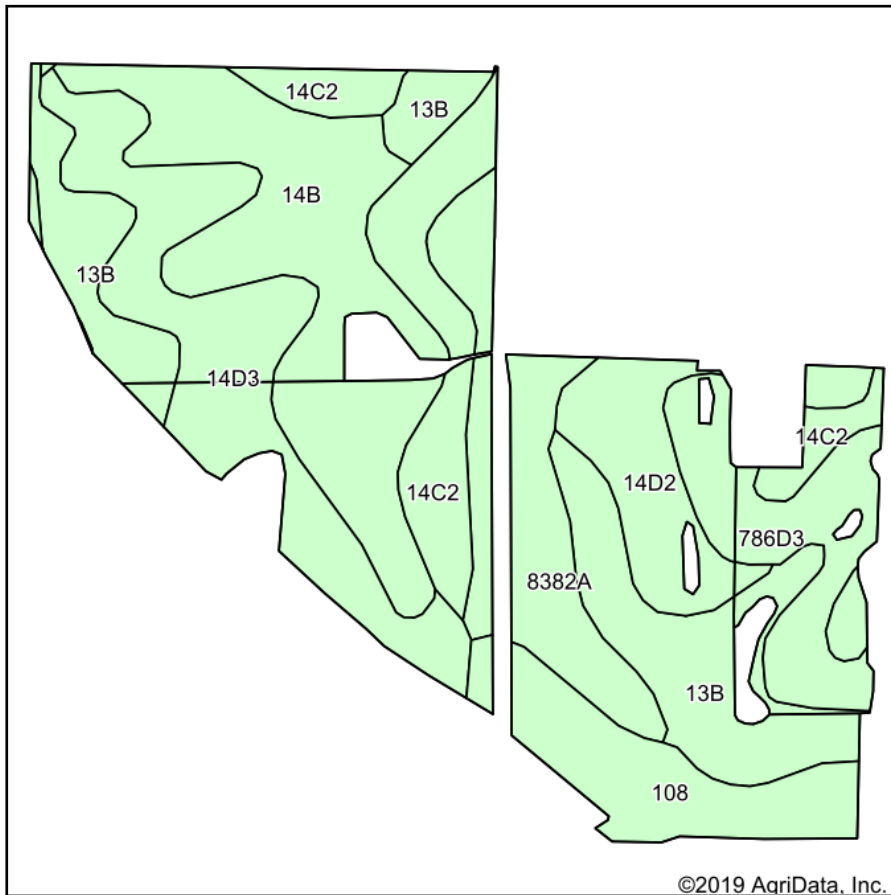
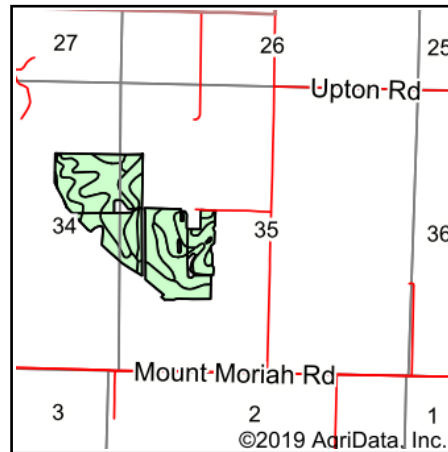


Soils Map



Soils data provided by USDA and NRCS.



State: **Illinois**
 County: **Saline**
 Location: **35-8S-5E**
 Township: **Brushy**
 Acres: **96.69**
 Date: **7/8/2019**



Area Symbol: IL165, Soil Area Version: 13								
Code	Soil Description	Acres	Percent of field	Il. State Productivity Index Legend	Corn Bu/A	Soybeans Bu/A	Wheat Bu/A	Crop productivity index for optimum management
**14B	Ava silt loam, 2 to 5 percent slopes	19.29	20.0%		**134	**44	**54	**99
**13B	Bluford silt loam, 2 to 5 percent slopes	16.15	16.7%		**135	**44	**54	**100
**14D3	Ava silt loam, 5 to 12 percent slopes, severely eroded	15.43	16.0%		**100	**33	**41	**74
**14C2	Ava silt loam, 5 to 10 percent slopes, eroded	11.45	11.8%		**122	**40	**50	**90
8382A	Belknap silt loam, 0 to 2 percent slopes, occasionally flooded	10.34	10.7%		156	52	63	117
**786D3	Frondorf silt loam, 7 to 12 percent slopes, severely eroded	8.44	8.7%		**84	**28	**33	**64
108	Bonnie silt loam	8.38	8.7%		149	49	59	111
**14D2	Ava silt loam, 7 to 12 percent slopes, eroded	7.21	7.5%		**122	**40	**50	**90
Weighted Average					125.7	41.4	50.7	93.4

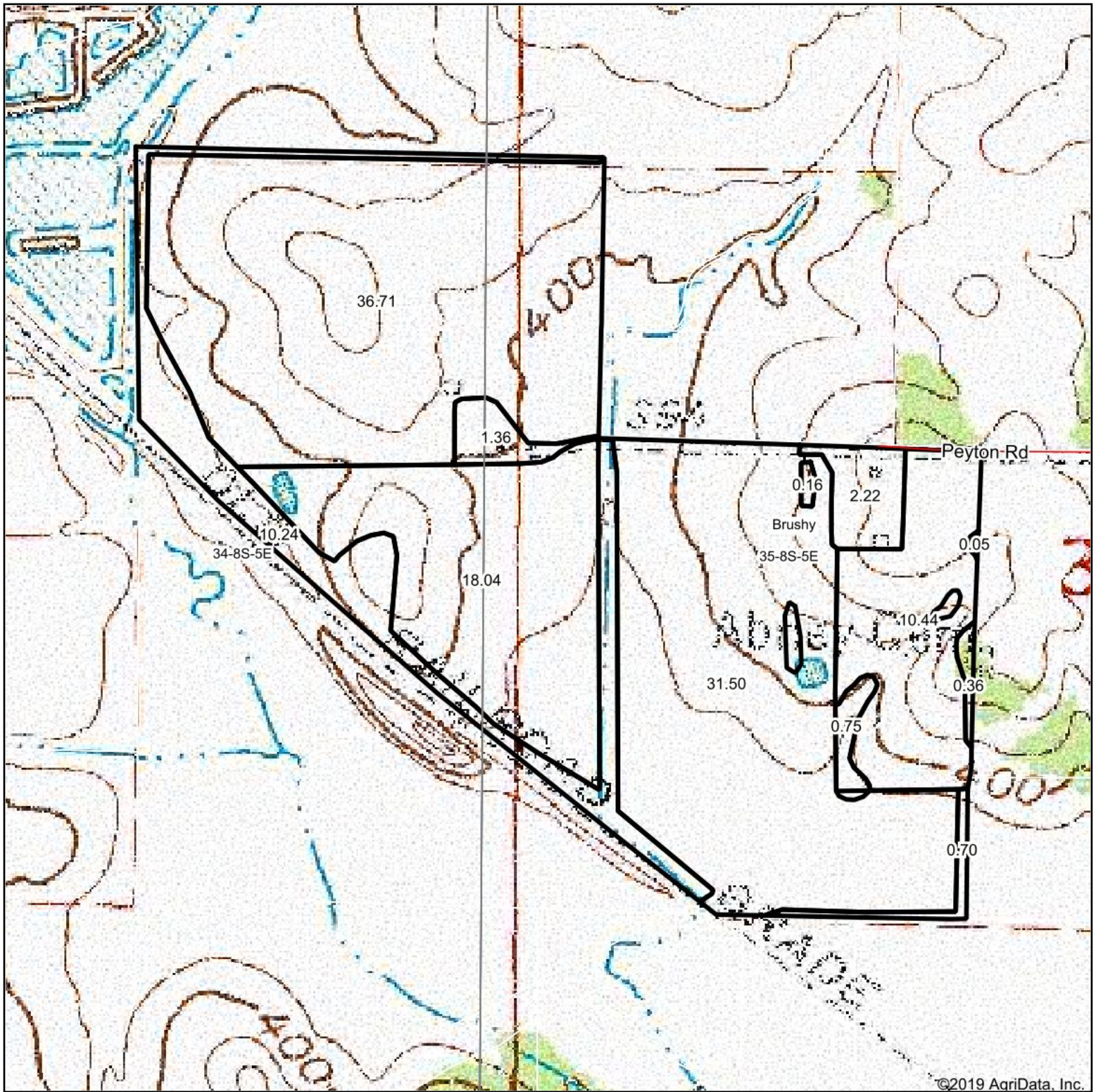
Table: Optimum Crop Productivity Ratings for Illinois Soil by K.R. Olson and J.M. Lang, Office of Research, ACES, University of Illinois at Champaign-Urbana. Version: 1/2/2012 Amended Table S2 B811

Crop yields and productivity indices for optimum management (B811) are maintained at the following NRES web site: <http://soilproductivity.nres.illinois.edu/>

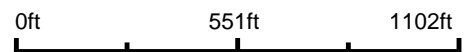
** Indexes adjusted for slope and erosion according to Bulletin 811 Table S3

Soils data provided by USDA and NRCS. Soils data provided by University of Illinois at Champaign-Urbana.

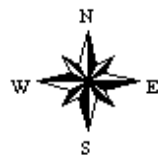
Topography Map



map center: 37° 46' 58.76, -88° 37' 58.3



35-8S-5E
Saline County
Illinois



7/8/2019



Maps Provided By:



© AgriData, Inc. 2019 www.AgrIDataInc.com