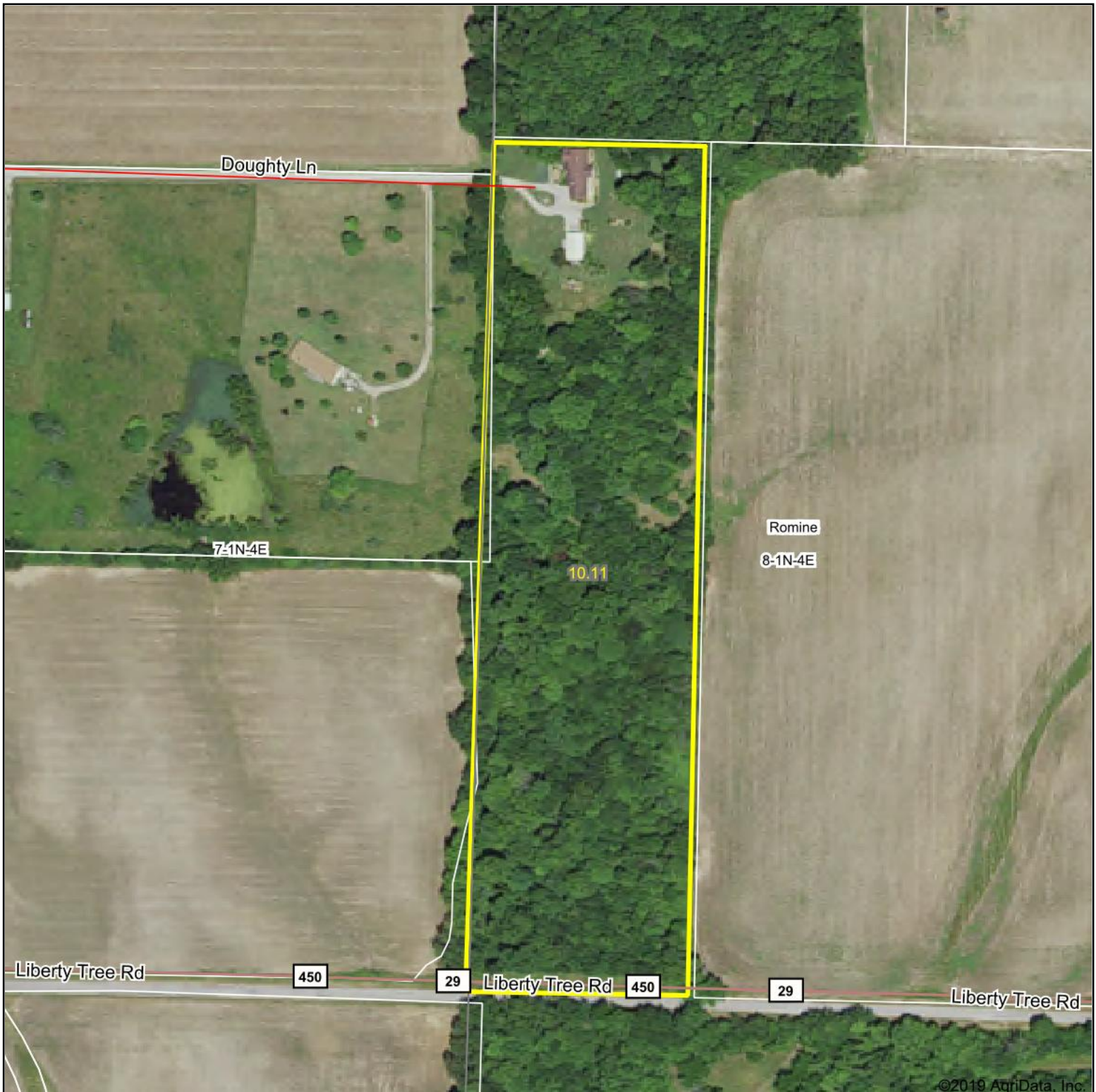


Aerial Map



Map Center: 38° 32' 35.1, -88° 47' 30.57



8-1N-4E
Marion County
Illinois



7/1/2019

Maps Provided By:
surety
CUSTOMIZED ONLINE MAPPING
© AgriData, Inc. 2019 www.AgriDataInc.com

Aerial Map

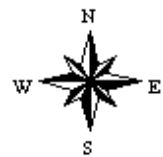


Map Center: 38° 32' 35.3, -88° 47' 30.56

0ft 1276ft 2552ft



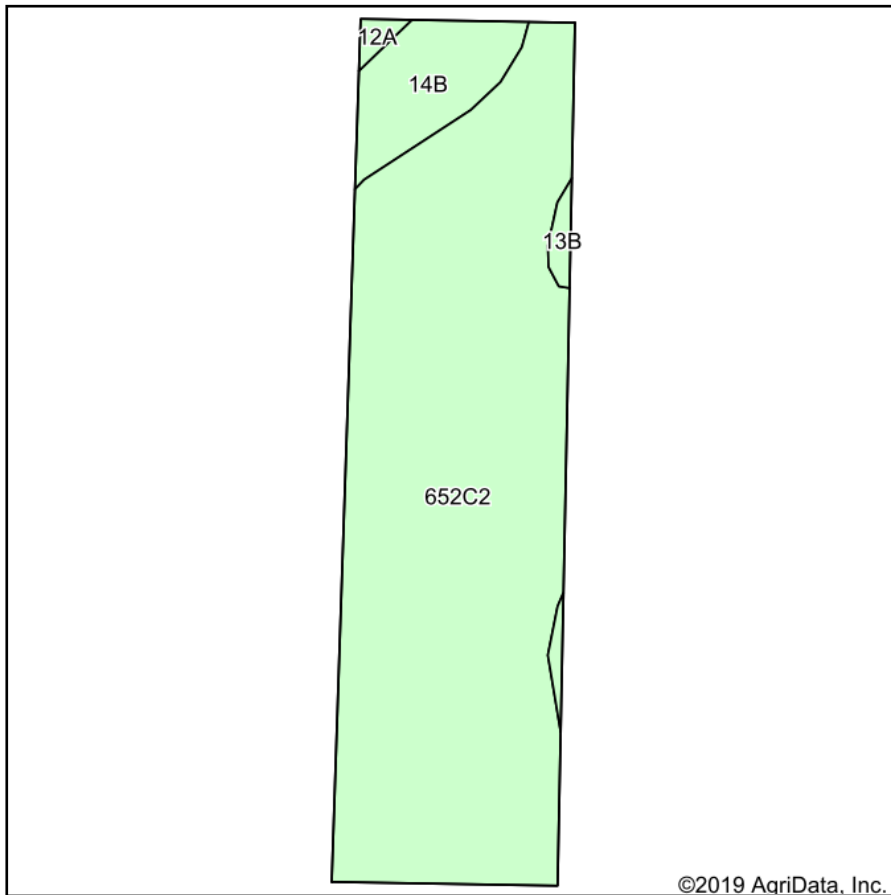
8-1N-4E
Marion County
Illinois



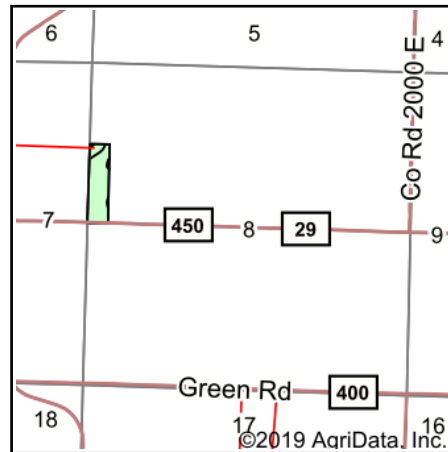
Maps Provided By:
surety
CUSTOMIZED ONLINE MAPPING
© AgriData, Inc. 2019 www.AgriDataInc.com

7/1/2019

Soils Map



Soils data provided by USDA and NRCS.



State: **Illinois**
 County: **Marion**
 Location: **8-1N-4E**
 Township: **Romine**
 Acres: **10.11**
 Date: **7/1/2019**



Maps Provided By:



© AgriData, Inc. 2019

www.AgriDataInc.com



Area Symbol: IL121, Soil Area Version: 15									
Code	Soil Description	Acres	Percent of field	Il. State Productivity Index Legend	Corn Bu/A	Soybeans Bu/A	Wheat Bu/A	Grass-legume e hay, T/A	Crop productivity index for optimum management
**652C2	Passport silt loam, 5 to 10 percent slopes, eroded	9.02	89.2%		**116	**39	**51	**3.85	**88
**14B	Ava silt loam, 2 to 5 percent slopes	0.87	8.6%		**134	**44	**54	0.00	**99
**13B	Bluford silt loam, 2 to 5 percent slopes	0.15	1.5%		**135	**44	**54	**3.36	**100
12A	Wynoose silt loam, 0 to 2 percent slopes	0.07	0.7%		128	42	51	4.26	97
Weighted Average					117.9	39.5	51.3	3.51	89.2

Table: Optimum Crop Productivity Ratings for Illinois Soil by K.R. Olson and J.M. Lang, Office of Research, ACES, University of Illinois at Champaign-Urbana. Version: 1/2/2012 Amended Table S2 B811

Crop yields and productivity indices for optimum management (B811) are maintained at the following NRES web site: <http://soilproductivity.nres.illinois.edu/>

** Indexes adjusted for slope and erosion according to Bulletin 811 Table S3

e Soils in the well drained group were not rated for grass-legume and are shown with a zero "0".

*c: Using Capabilities Class Dominant Condition Aggregation Method

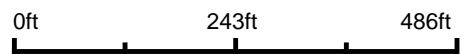
Soils data provided by USDA and NRCS. Soils data provided by University of Illinois at Champaign-Urbana.

Topography Map

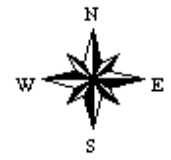


©2019 AgriData, Inc.

map center: 38° 32' 35.1, -88° 47' 30.57



8-1N-4E
Marion County
Illinois



7/1/2019



Maps Provided By:
 **surety**
CUSTOMIZED ONLINE MAPPING
© AgriData, Inc. 2019 www.AgriDataInc.com

Field borders provided by Farm Service Agency as of 5/21/2008. Soils data provided by University of Illinois at Champaign-Urbana.