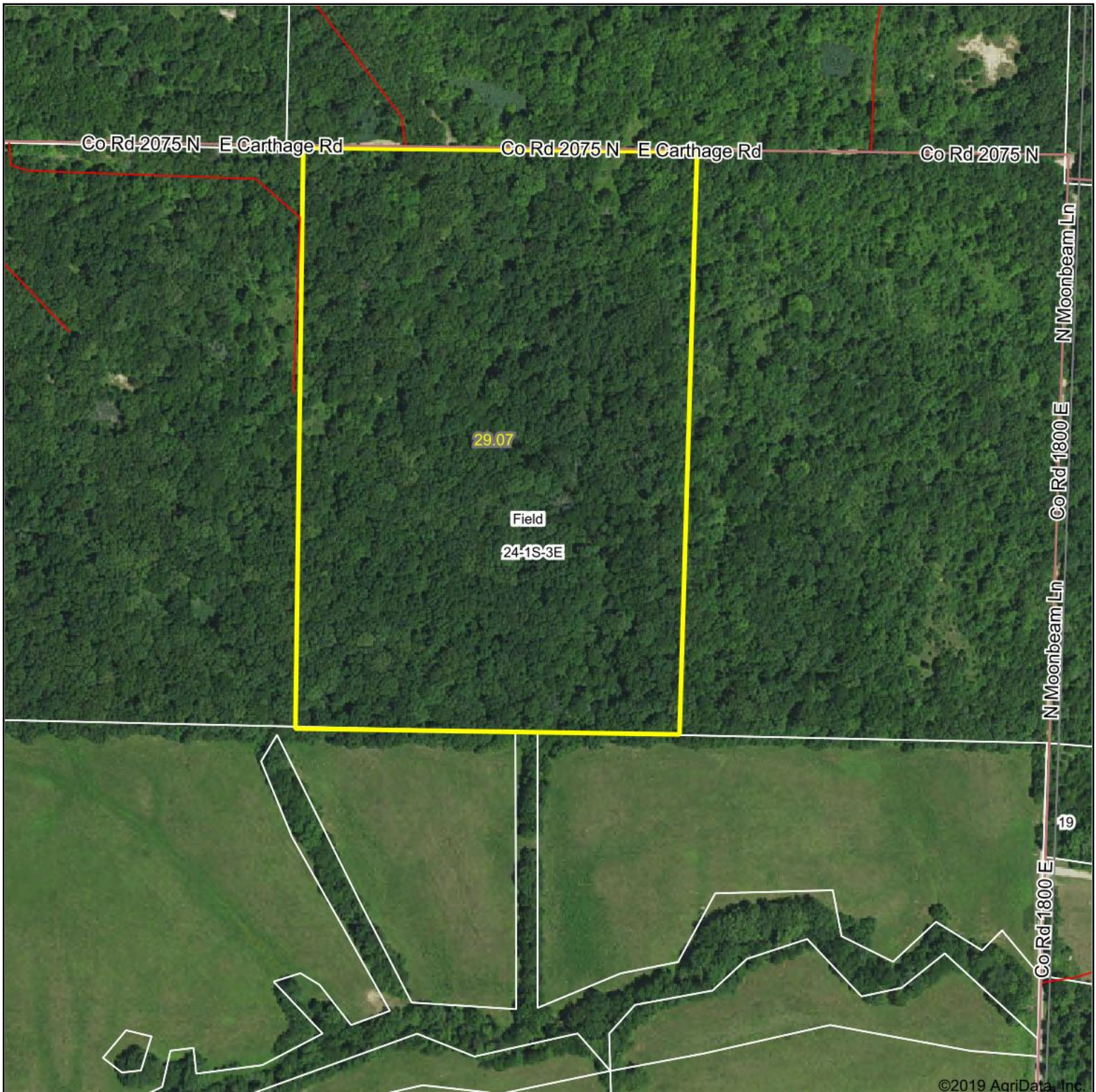


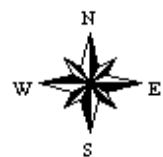
Aerial Map



Map Center: 38° 25' 34.65, -88° 48' 55.8



24-1S-3E
Jefferson County
Illinois

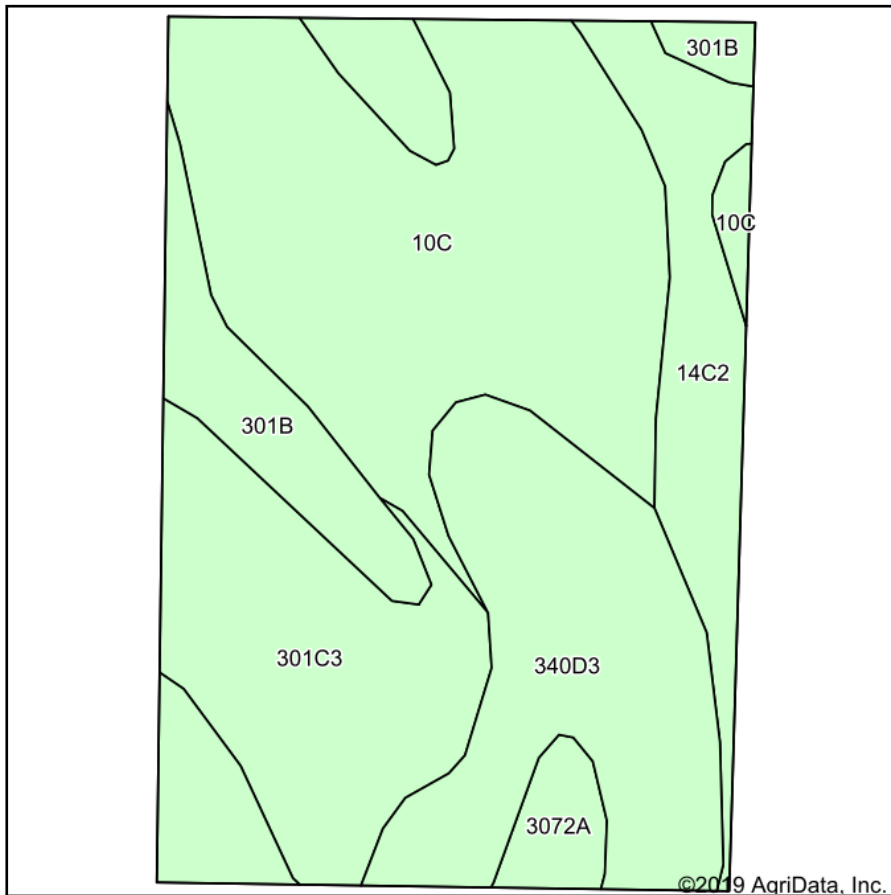


7/3/2019

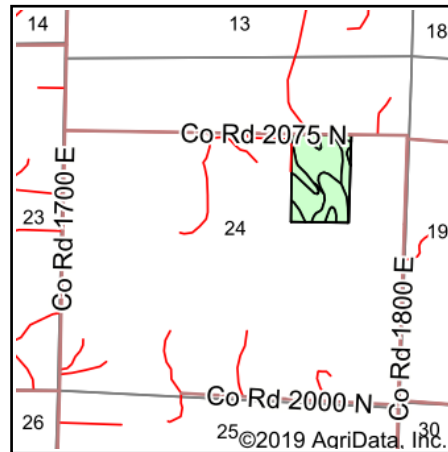


Maps Provided By:
surety
CUSTOMIZED ONLINE MAPPING
© AgriData, Inc. 2019 www.AgriDataInc.com

Soils Map



Soils data provided by USDA and NRCS.



State: **Illinois**
 County: **Jefferson**
 Location: **24-1S-3E**
 Township: **Field**
 Acres: **29.07**
 Date: **7/3/2019**

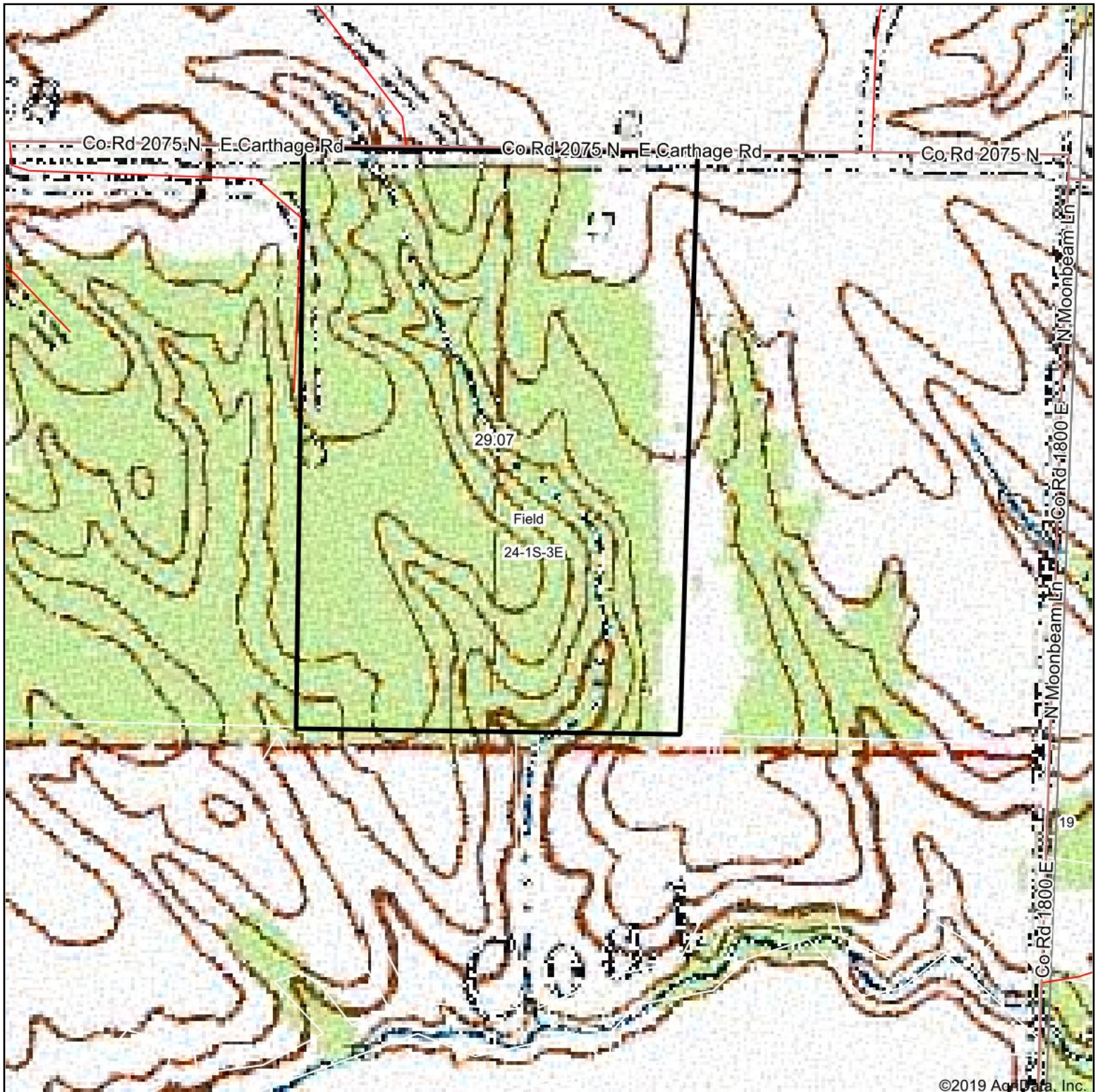


Area Symbol: IL081. Soil Area Version: 11									
Code	Soil Description	Acres	Percent of field	Il. State Productivity Index Legend	Corn Bu/A	Soybeans Bu/A	Wheat Bu/A	Grass-legume hay, T/A	Crop productivity index for optimum management
**10C	Plumfield silty clay loam, 5 to 10 percent slopes	10.45	35.9%		**103	**34	**39	**3.37	**78
**340D3	Zanesville silt loam, till plain, 10 to 18 percent slopes, severely eroded	6.90	23.7%		**86	**30	**37	**2.68	**65
**301C3	Grantsburg silty clay loam, 5 to 10 percent slopes, severely eroded	5.24	18.0%		**99	**34	**41	0.00	**75
**14C2	Ava silt loam, 5 to 10 percent slopes, eroded	3.62	12.5%		**122	**40	**50	0.00	**90
**301B	Grantsburg silt loam, 2 to 5 percent slopes	2.16	7.4%		**133	**46	**54	0.00	**101
3072A	Sharon silt loam, 0 to 2 percent slopes, frequently flooded	0.70	2.4%		164	53	63	0.00	122
Weighted Average					104.3	35.1	41.9	1.85	78.6

Table: Optimum Crop Productivity Ratings for Illinois Soil by K.R. Olson and J.M. Lang, Office of Research, ACES, University of Illinois at Champaign-Urbana. Version: 1/2/2012 Amended Table S2 B811
 Crop yields and productivity indices for optimum management (B811) are maintained at the following NRES web site: <http://soilproductivity.nres.illinois.edu/>

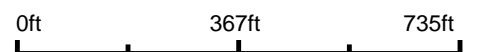
** Indexes adjusted for slope and erosion according to Bulletin 811 Table S3
 e Soils in the well drained group were not rated for grass-legume and are shown with a zero "0".
 *c: Using Capabilities Class Dominant Condition Aggregation Method
 Soils data provided by USDA and NRCS. Soils data provided by University of Illinois at Champaign-Urbana.

Topography Map



©2019 AgriData, Inc.

map center: 38° 25' 34.65, -88° 48' 55.8



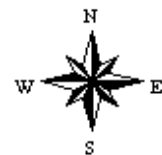
Maps Provided By:



© AgriData, Inc. 2019

www.AgridataInc.com

24-1S-3E
Jefferson County
Illinois



7/3/2019