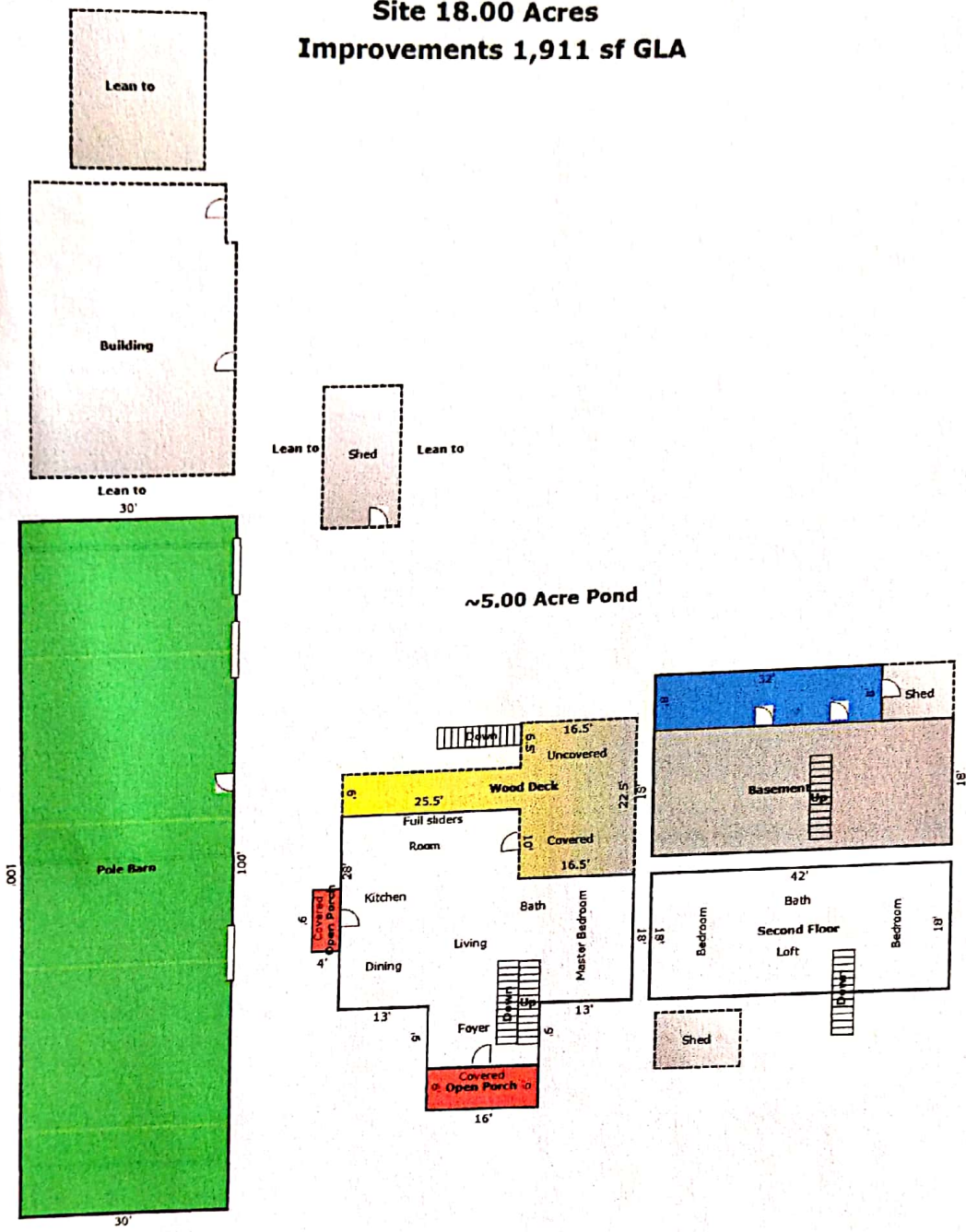


**Site 18.00 Acres
Improvements 1,911 sf GLA**



TOTAL Sketch by a la mode, Inc.

Area Calculations Summary

		Calculation Details	
Living Area	1155 Sq ft	16 × 9 =	144
First Floor		18 × 16.5 =	297
		25.5 × 28 =	714
Second Floor	756 Sq ft	42 × 18 =	756
Total Living Area (Rounded):	1911 Sq ft		
Non-living Area	524.25 Sq ft	6 × 25.5 =	153
Wood Deck		16.5 × 22.5 =	371.25
Open Porch	96 Sq ft	16 × 6 =	96
Open Porch	36 Sq ft	9 × 4 =	36
Basement	756 Sq ft	0.5 × 42 × 0 =	0
		42 × 18 =	756
Pole Barn	3000 Sq ft	100 × 30 =	3000
Concrete Patio	256 Sq ft	32 × 8 =	256