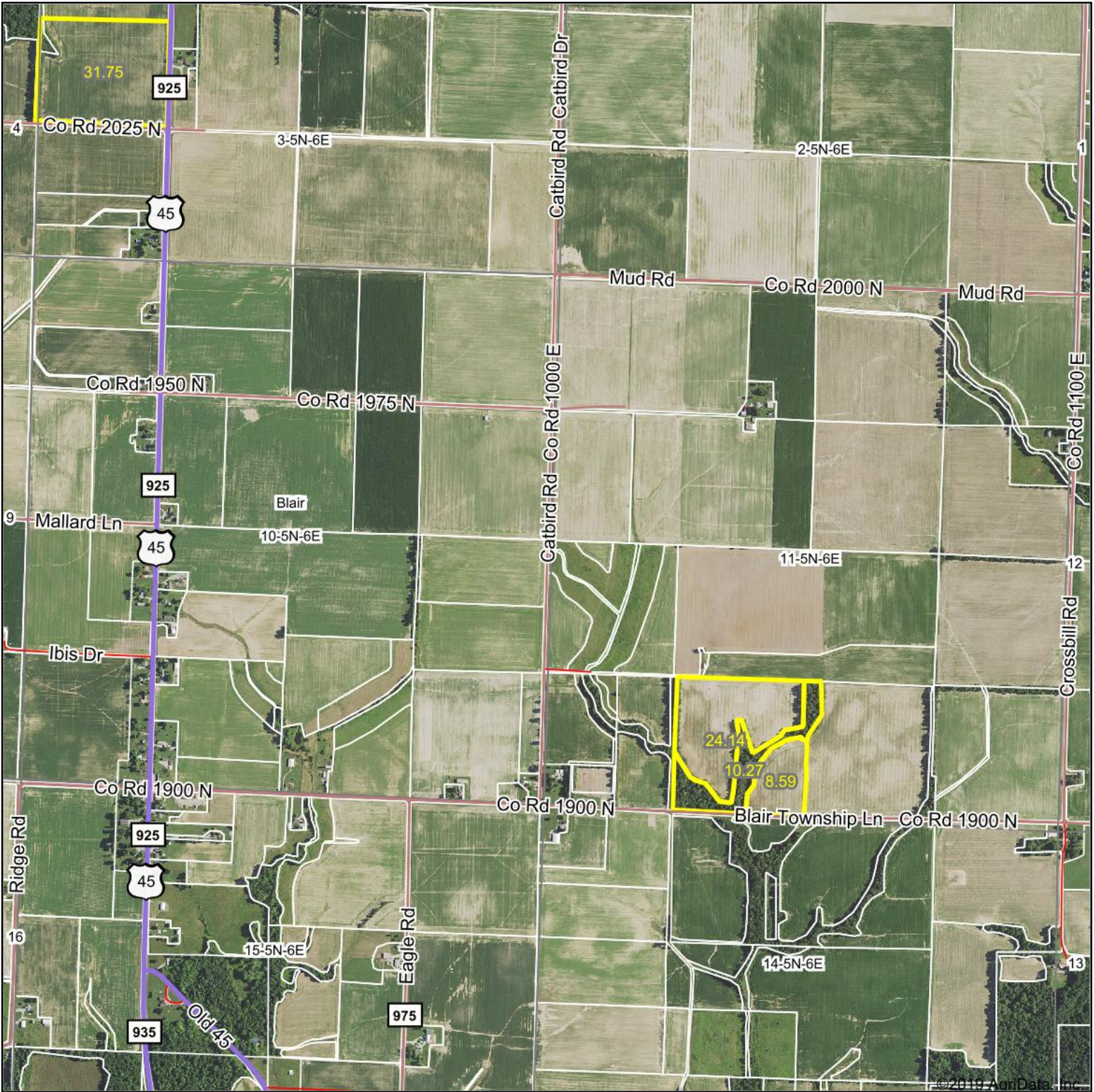
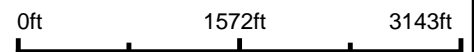


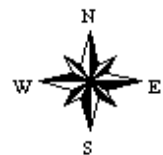
Aerial Map



Map Center: 38° 53' 28.48, -88° 30' 26.53



10-5N-6E
Clay County
Illinois



6/13/2019



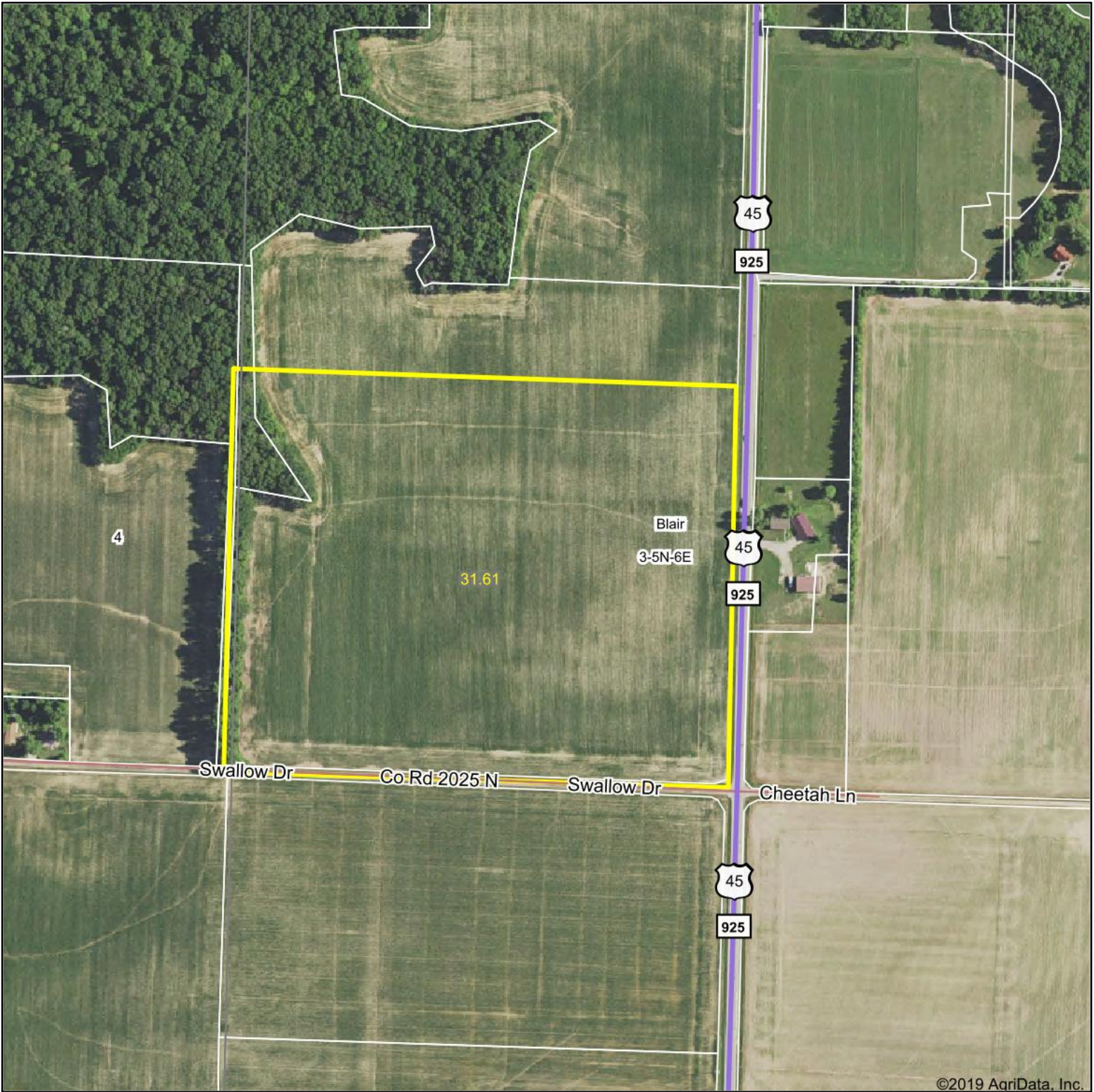
Maps Provided By:



© AgriData, Inc. 2019 www.AgridataInc.com

Field borders provided by Farm Service Agency as of 5/21/2008. Soils data provided by University of Illinois at Champaign-Urbana.

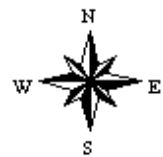
Aerial Map



Map Center: 38° 54' 15.8, -88° 31' 22.2



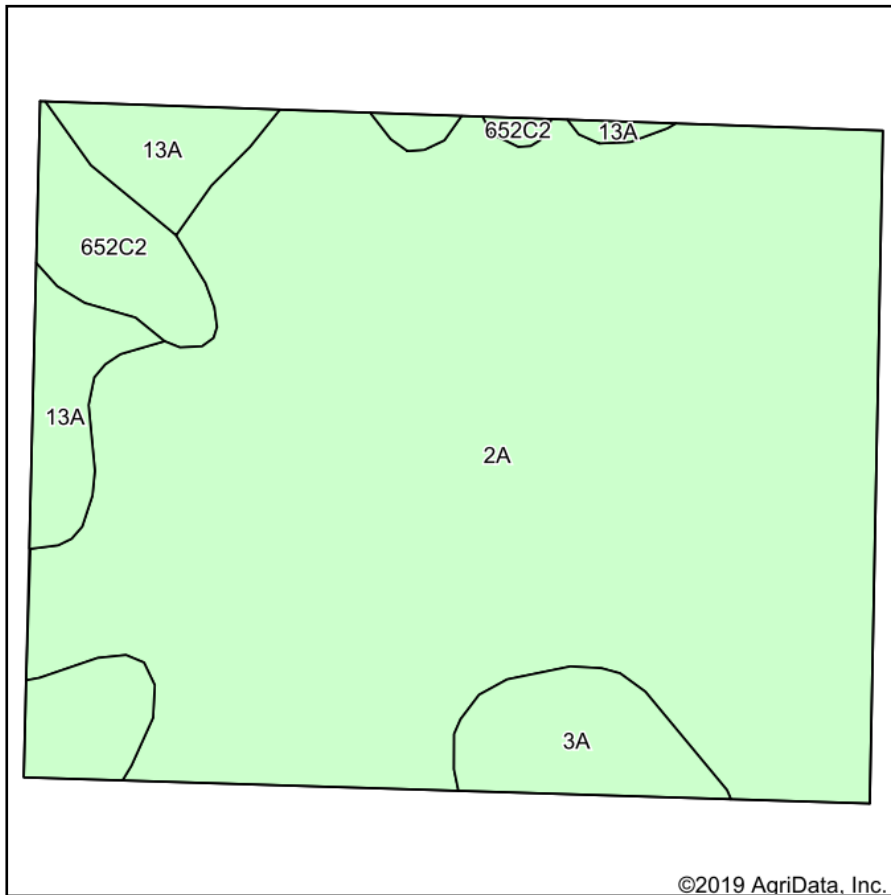
3-5N-6E
Clay County
Illinois



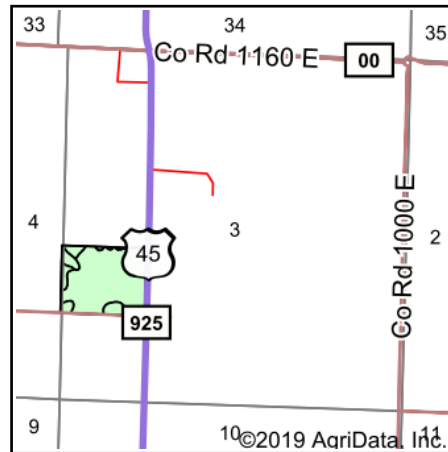
Maps Provided By:
surety
CUSTOMIZED ONLINE MAPPING
© AgriData, Inc. 2019 www.AgriDataInc.com

6/4/2019

Soils Map



Soils data provided by USDA and NRCS.



State: **Illinois**
 County: **Clay**
 Location: **3-5N-6E**
 Township: **Blair**
 Acres: **31.61**
 Date: **6/4/2019**



Area Symbol: IL025, Soil Area Version: 13

Code	Soil Description	Acres	Percent of field	Il. State Productivity Index Legend	Corn Bu/A	Soybeans Bu/A	Wheat Bu/A	Grass-legume hay, T/A	Crop productivity index for optimum management
2A	Cisne silt loam, 0 to 2 percent slopes	26.03	82.3%		149	46	59	4.64	109
13A	Bluford silt loam, 0 to 2 percent slopes	2.83	9.0%		136	44	55	3.39	101
3A	Hoyleton silt loam, 0 to 2 percent slopes	1.46	4.6%		146	46	58	4.64	108
**652C2	Passport silt loam, 5 to 10 percent slopes, eroded	1.29	4.1%		**116	**39	**51	**3.85	**88
Weighted Average					146.4	45.5	58.3	4.50	107.4

Table: Optimum Crop Productivity Ratings for Illinois Soil by K.R. Olson and J.M. Lang, Office of Research, ACES, University of Illinois at Champaign-Urbana. Version: 1/2/2012 Amended Table S2 B811

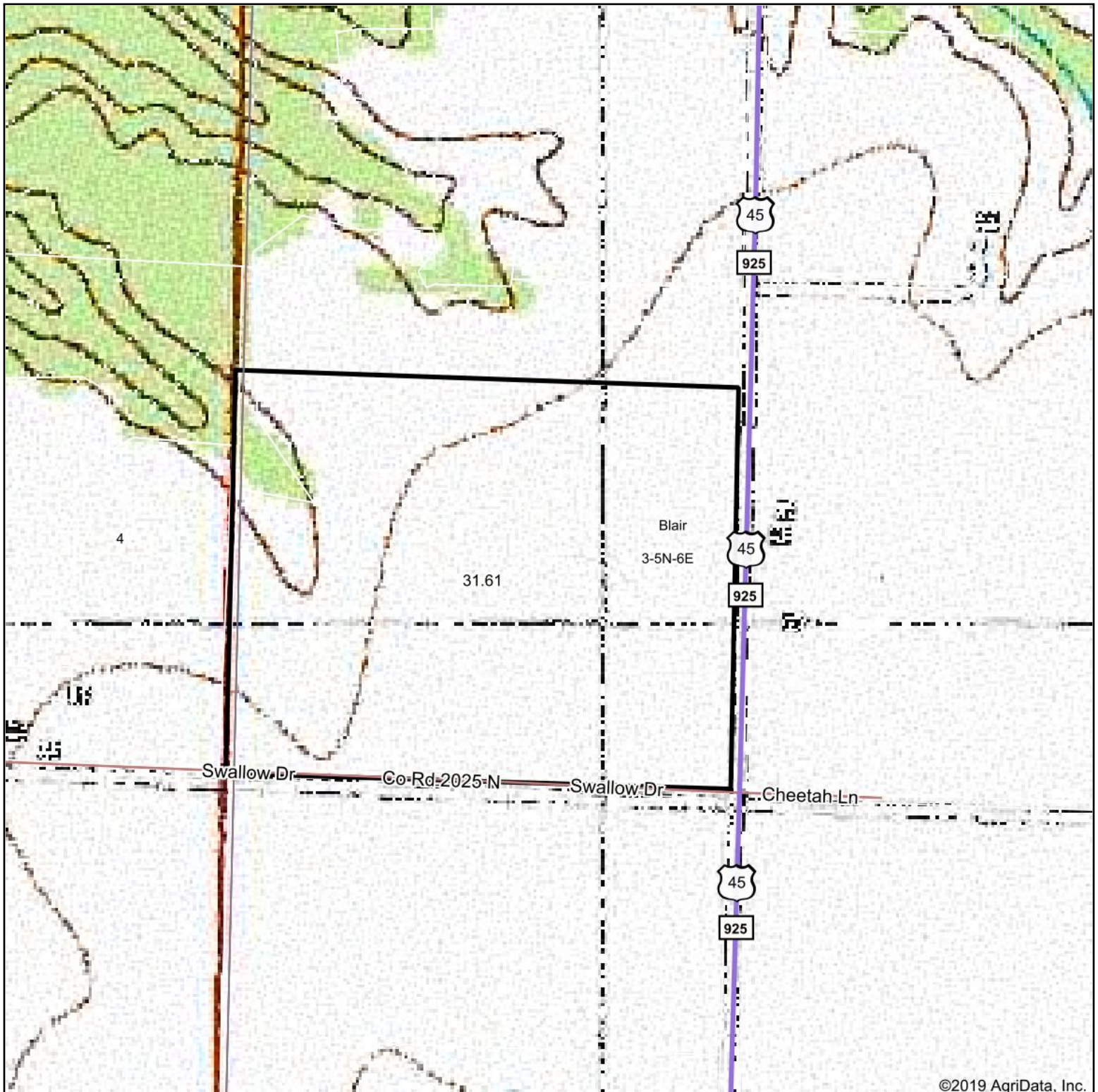
Crop yields and productivity indices for optimum management (B811) are maintained at the following NRES web site: <http://soilproductivity.nres.illinois.edu/>

** Indexes adjusted for slope and erosion according to Bulletin 811 Table S3

e Soils in the well drained group were not rated for grass-legume and are shown with a zero "0".

*c: Using Capabilities Class Dominant Condition Aggregation Method

Topography Map

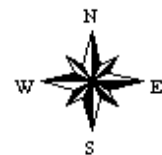


©2019 AgriData, Inc.

map center: 38° 54' 15.8, -88° 31' 22.2



3-5N-6E
Clay County
Illinois



6/4/2019



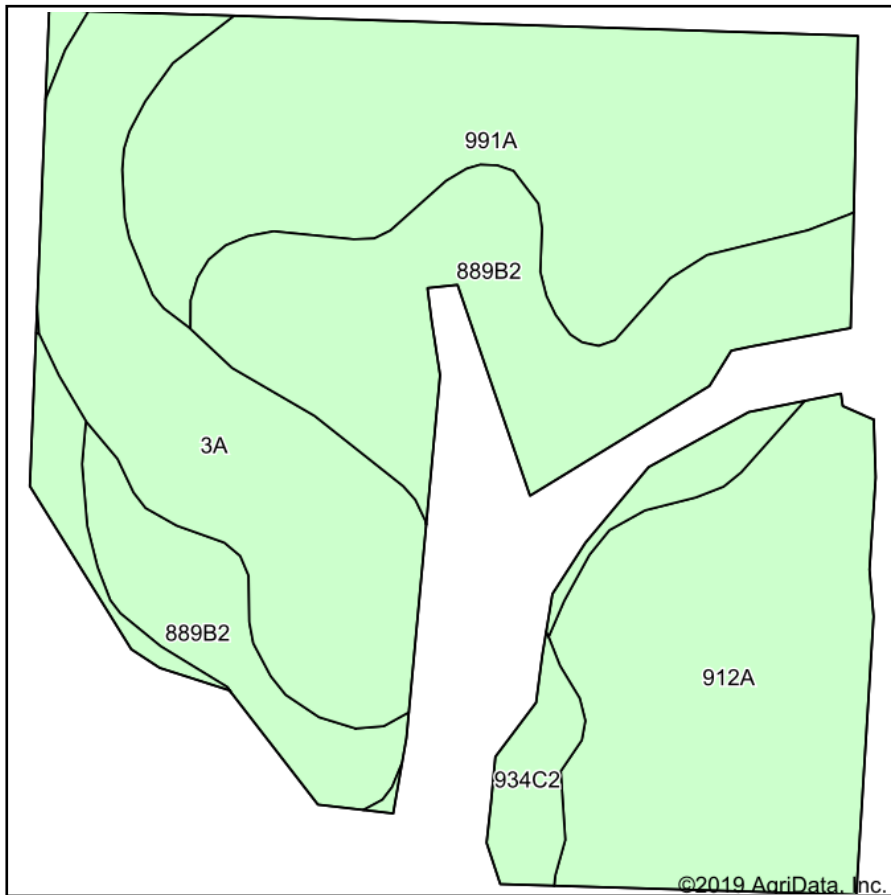
Maps Provided By:



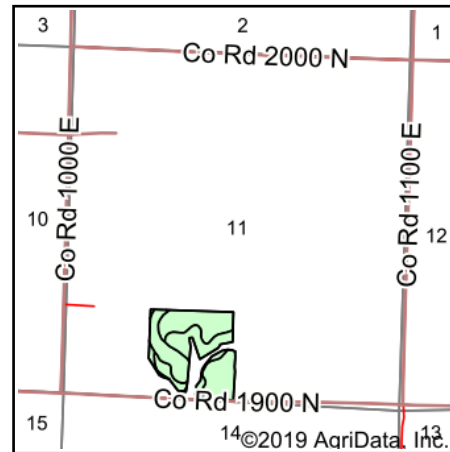
© AgriData, Inc. 2019

www.AgridataInc.com

Soils Map



Soils data provided by USDA and NRCS.



State: **Illinois**
 County: **Clay**
 Location: **11-5N-6E**
 Township: **Blair**
 Acres: **32.73**
 Date: **6/4/2019**

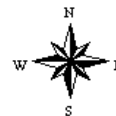


Maps Provided By:



© AgriData, Inc. 2019

www.AgriDataInc.com



Area Symbol: IL025, Soil Area Version: 13

Code	Soil Description	Acres	Percent of field	Il. State Productivity Index Legend	Corn Bu/A	Soybeans Bu/A	Wheat Bu/A	Grass-legume e hay, T/A	Crop productivity index for optimum management
991A	Cisne-Huey silt loams, 0 to 2 percent slopes	9.27	28.3%		133	45	52	4.19	102
**889B2	Darmstadt-Bluford silt loams, 2 to 5 percent slopes, eroded	8.48	25.9%		**119	**41	**47	**3.25	**91
912A	Hoyleton-Darmstadt silt loams, 0 to 2 percent slopes	7.24	22.1%		134	45	52	4.24	103
3A	Hoyleton silt loam, 0 to 2 percent slopes	6.27	19.2%		146	46	58	4.64	108
**934C2	Blair-Grantfork complex, 5 to 10 percent slopes, eroded	1.47	4.5%		**114	**40	**45	**3.55	**88
Weighted Average					131.2	43.9	51.5	4.01	99.9

Table: Optimum Crop Productivity Ratings for Illinois Soil by K.R. Olson and J.M. Lang, Office of Research, ACES, University of Illinois at Champaign-Urbana. Version: 1/2/2012 Amended Table S2 B811

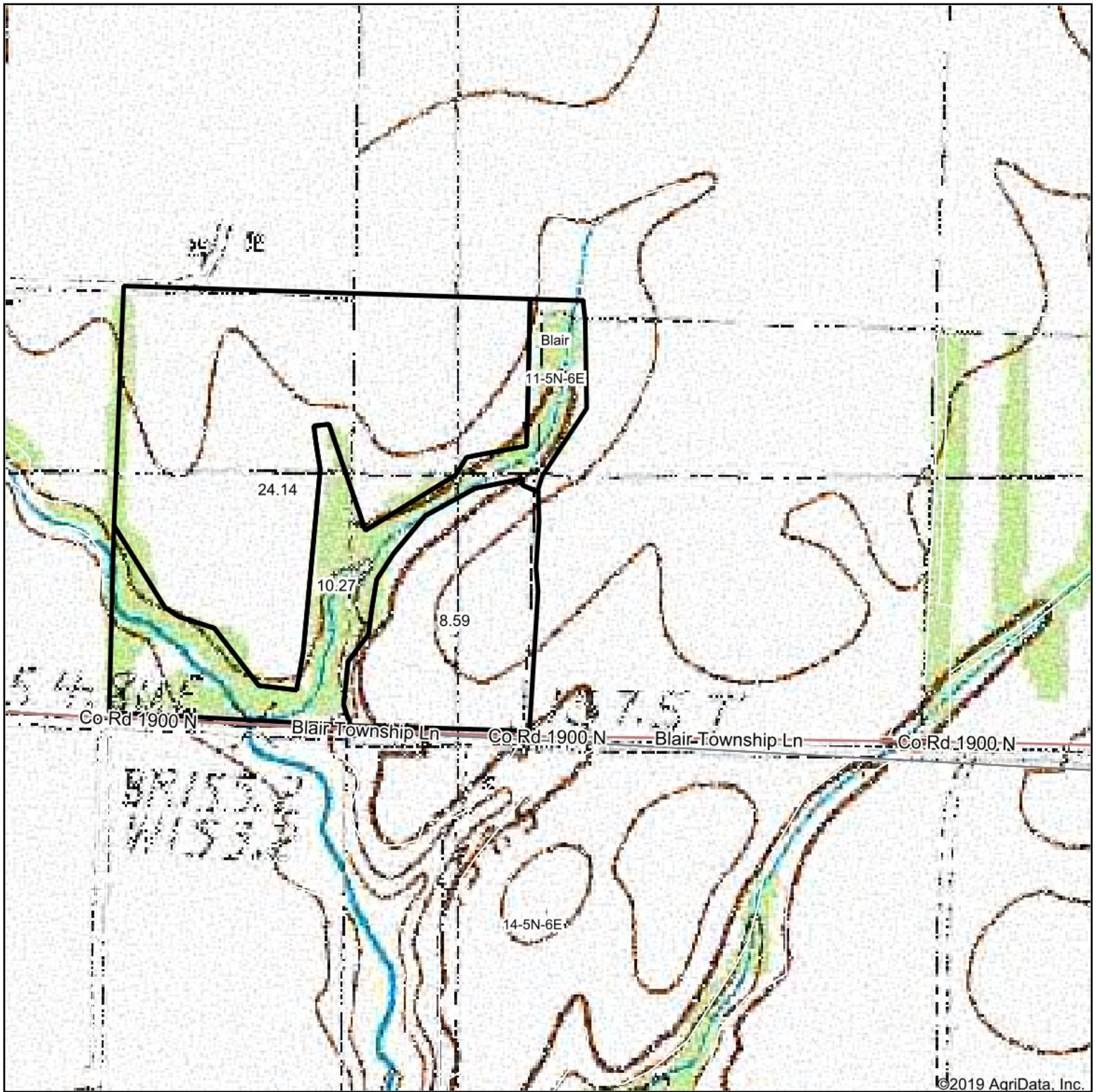
Crop yields and productivity indices for optimum management (B811) are maintained at the following NRES web site: <http://soilproductivity.nres.illinois.edu/>

** Indexes adjusted for slope and erosion according to Bulletin 811 Table S3

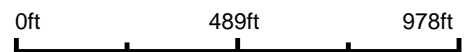
e Soils in the well drained group were not rated for grass-legume and are shown with a zero "0".

*c: Using Capabilities Class Dominant Condition Aggregation Method

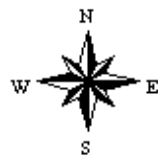
Topography Map



map center: 38° 53' 7.78, -88° 29' 52.41



11-5N-6E
Clay County
Illinois



6/4/2019



Maps Provided By:



© AgriData, Inc. 2019 www.AgriDataInc.com

Aerial Map

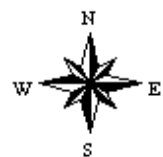


©2019 AgriData, Inc.

Map Center: 38° 53' 7.78, -88° 29' 52.41



11-5N-6E
Clay County
Illinois



6/4/2019



Maps Provided By:



© AgriData, Inc. 2019 www.AgriDataInc.com

Field borders provided by Farm Service Agency as of 5/21/2008. Soils data provided by University of Illinois at Champaign-Urbana.