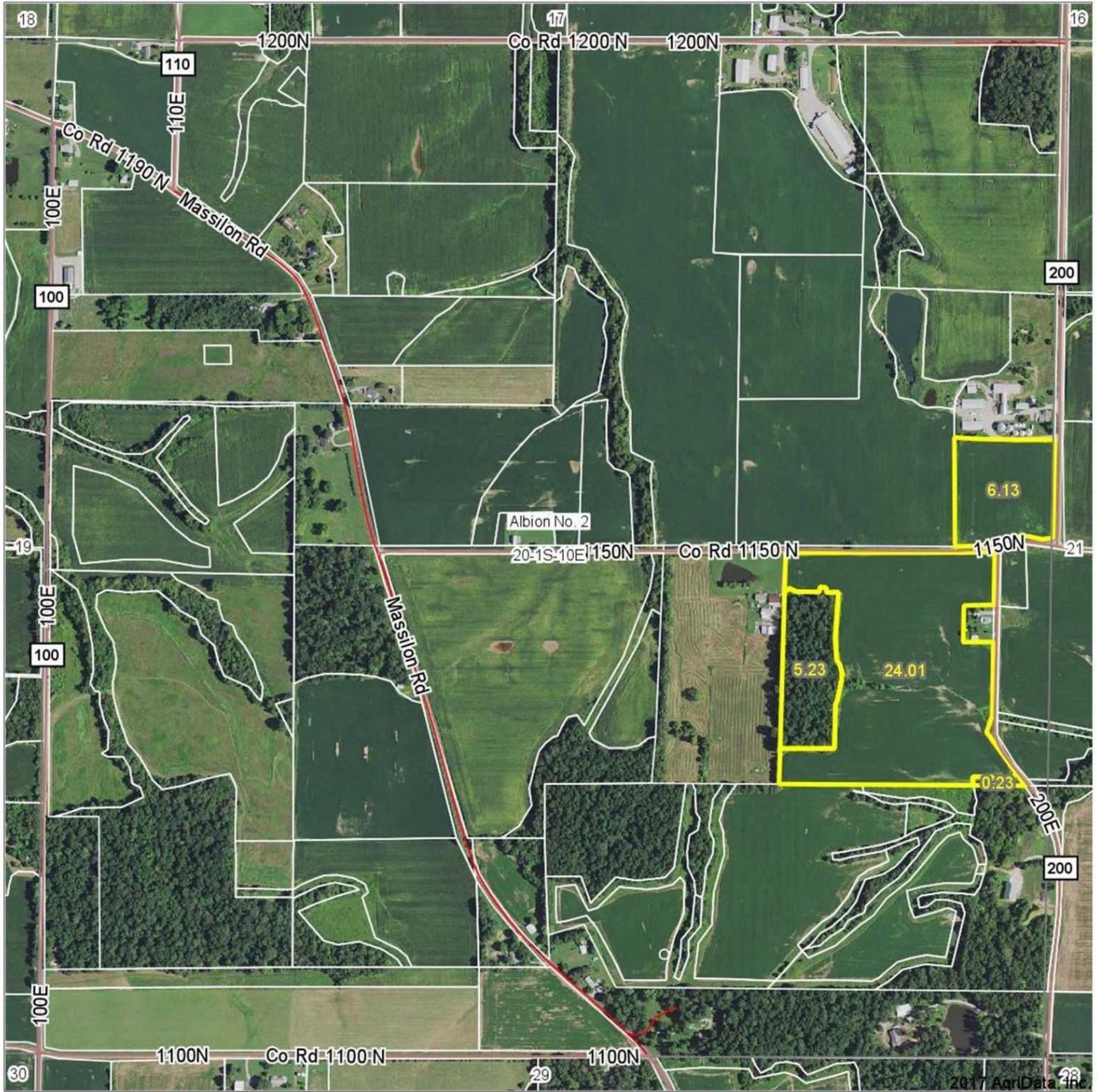


# Aerial Map



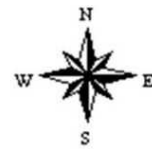
 Brett Berger, ARA

map center: 38.422299, -88.121054



Maps Provided By:  
  
CUSTOMIZED ONLINE MAPPING  
© AgriData, Inc. 2017      www.AgrDataInc.com

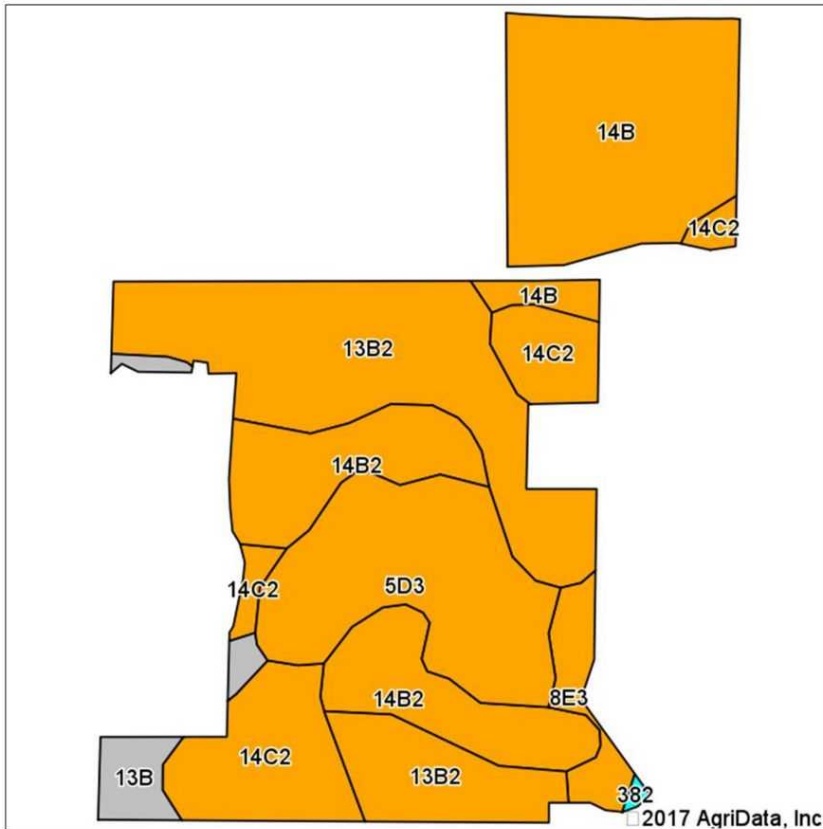
**20-1S-10E**  
**Edwards County**  
**Illinois**



5/9/2017

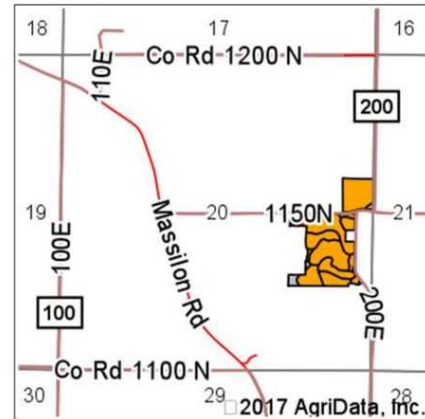
Field borders provided by Farm Service Agency as of 5/21/2008. Soils data provided by University of Illinois at Champaign-Urbana.

# Soils Map



Soils data provided by USDA and NRCS.

© 2017 AgriData, Inc.



State: **Illinois**  
 County: **Edwards**  
 Location: **20-1S-10E**  
 Township: **Albion No. 2**  
 Acres: **30.14**  
 Date: **5/9/2017**

 Brett Berger, ARA

Maps Provided By:  
 **surety**  
 CUSTOMIZED ONLINE MAPPING  
 © AgriData, Inc. 2017 www.AgrIDataInc.com



**Area Symbol: IL047, Soil Area Version: 8**

Code	Soil Description	Acres	Percent of field	Il. State Productivity Index Legend	Corn Bu/A	Soybeans Bu/A	Wheat Bu/A	Crop productivity index for optimum management
**13B2	Bluford silt loam, 2 to 5 percent slopes, eroded	8.48	28.1%		**129	**42	**52	**96
**14B	Ava silt loam, 2 to 5 percent slopes	6.33	21.0%		**134	**44	**54	**99
**5D3	Blair soils, 7 to 12 percent slopes, severely eroded	4.99	16.6%		**102	**33	**41	**77
**14B2	Ava silt loam, 2 to 5 percent slopes, eroded	4.57	15.2%		**126	**41	**51	**93
**14C2	Ava silt loam, 5 to 10 percent slopes, eroded	3.88	12.9%		**122	**40	**50	**90
**13B	Bluford silt loam, 2 to 5 percent slopes	0.96	3.2%		**135	**44	**54	**100
**8E3	Hickory clay loam, 18 to 25 percent slopes, severely eroded	0.93	3.1%		**82	**28	**33	**63
<b>Weighted Average</b>					<b>123</b>	<b>40.2</b>	<b>49.7</b>	<b>91.4</b>

**Table: Optimum Crop Productivity Ratings for Illinois Soil by K.R. Olson and J.M. Lang, Office of Research, ACES, University of Illinois at Champaign-Urbana.** Version: 1/2/2012 Amended Table S2 B811

Crop yields and productivity indices for optimum management (B811) are maintained at the following NRES web site:  
<https://www.ideals.illinois.edu/handle/2142/1027/>

\*\* Indexes adjusted for slope and erosion according to Bulletin 811 Table S3

Soils data provided by USDA and NRCS. Soils data provided by University of Illinois at Champaign-Urbana.

\*c: Using Capabilities Class Dominant Condition Aggregation Method