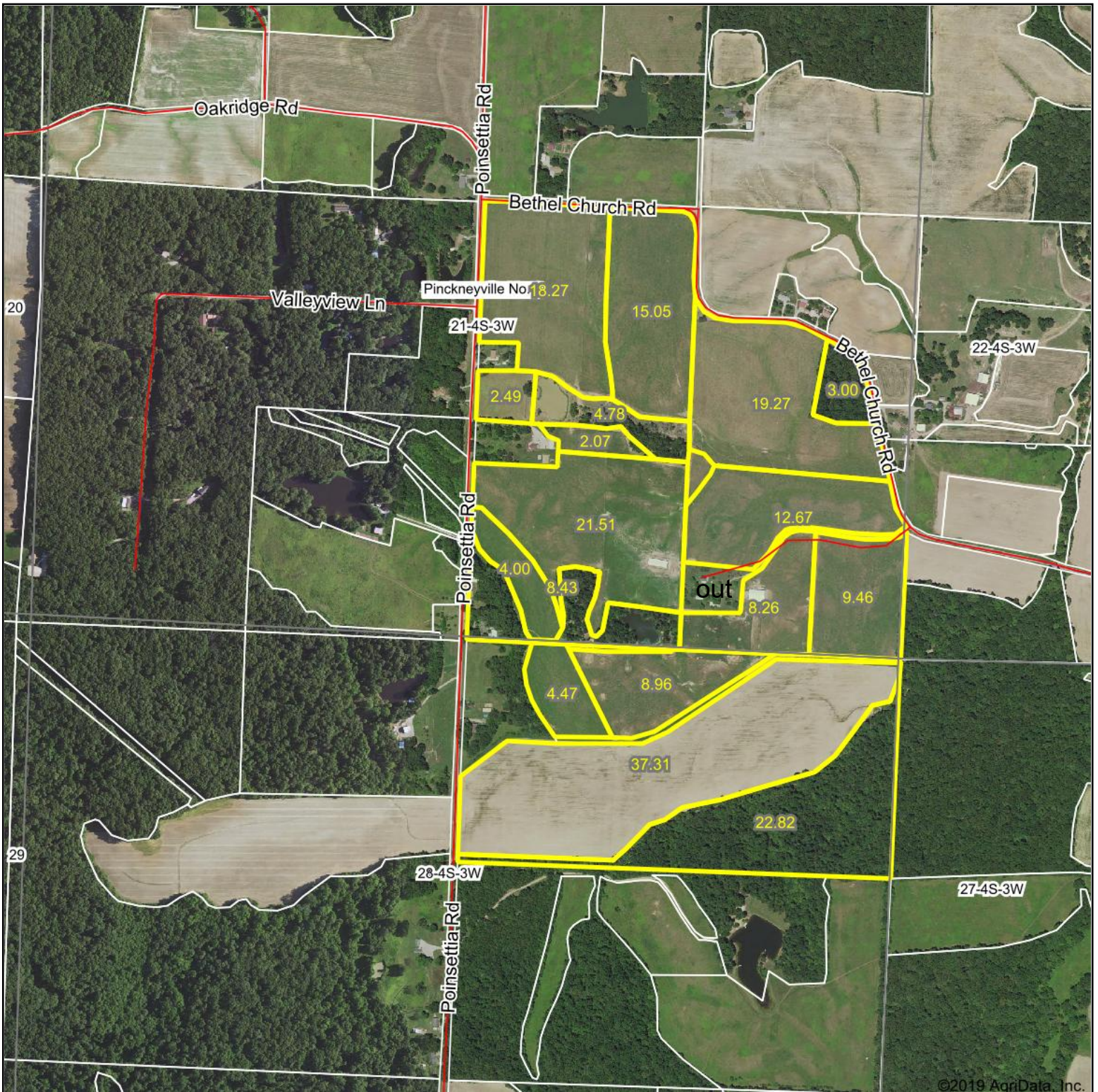
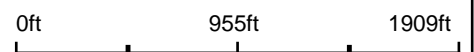


# Aerial Map



©2019 AgriData, Inc.

map center: 38° 9' 33.06, -89° 25' 57.52



Maps Provided By:

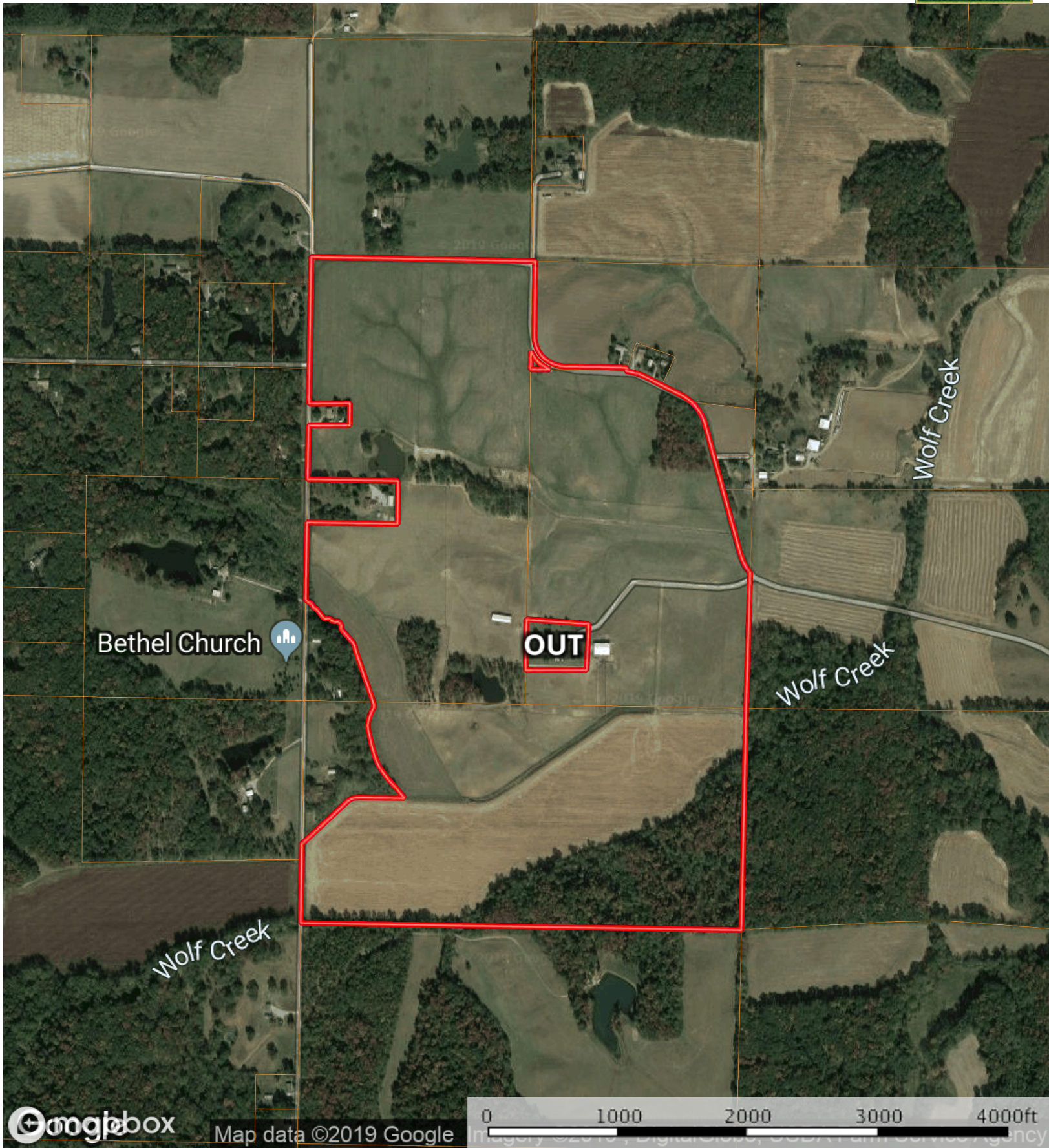


© AgriData, Inc. 2019 www.Agridatainc.com

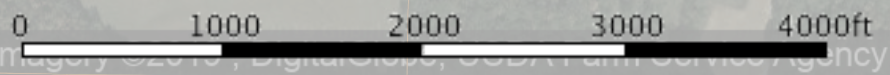
**21-4S-3W**  
**Perry County**  
**Illinois**



4/20/2019

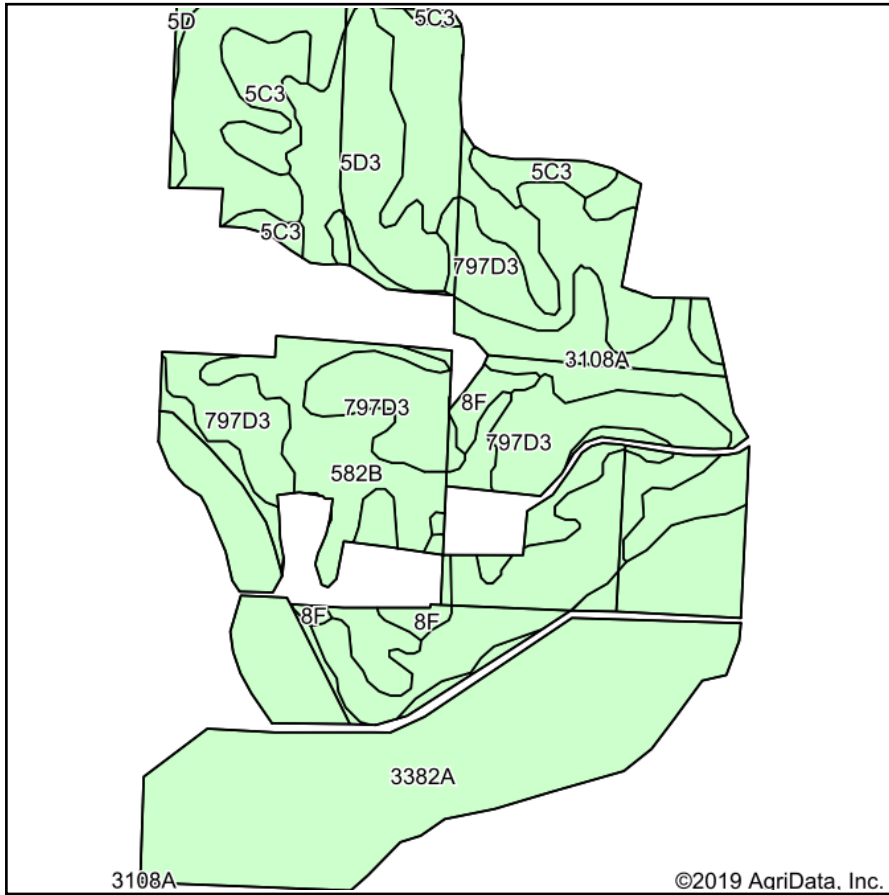


Map data ©2019 Google

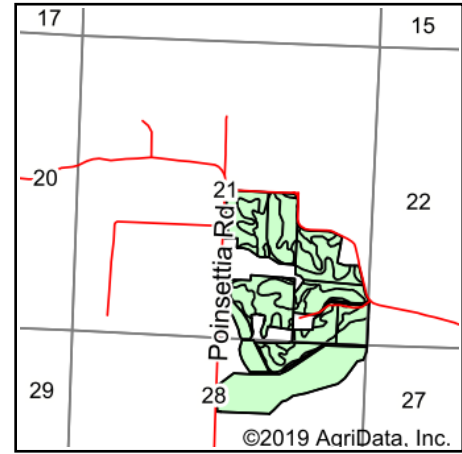


Boundary

# Soils Map



Soils data provided by USDA and NRCS.



State: **Illinois**  
 County: **Perry**  
 Location: **21-4S-3W**  
 Township: **Pinckneyville No. 8**  
 Acres: **159.23**  
 Date: **4/20/2019**



**Area Symbol: IL145, Soil Area Version: 15**

Code	Soil Description	Acres	Percent of field	Il. State Productivity Index Legend	Corn Bu/A	Soybeans Bu/A	Wheat Bu/A	Crop productivity index for optimum management
3382A	Belknap silt loam, 0 to 2 percent slopes, frequently flooded	53.45	33.6%		156	52	63	117
**797D3	Hickory-Homen silty clay loams, 10 to 18 percent slopes, severely eroded	38.17	24.0%		**107	**36	**42	**80
**582B	Homen silt loam, 2 to 5 percent slopes	33.46	21.0%		**149	**47	**55	**108
3108A	Bonnie silt loam, 0 to 2 percent slopes, frequently flooded	11.71	7.4%		149	49	59	111
**5D3	Blair silty clay loam, 10 to 18 percent slopes, severely eroded	11.28	7.1%		**95	**31	**38	**72
**5C3	Blair silty clay loam, 5 to 10 percent slopes, severely eroded	6.70	4.2%		**102	**33	**41	**77
**8F	Hickory silt loam, 18 to 35 percent slopes	3.74	2.3%		**86	**29	**35	**65
**5D	Blair silt loam, 10 to 18 percent slopes	0.72	0.5%		**126	**41	**50	**95
<b>Weighted Average</b>					<b>133.9</b>	<b>44</b>	<b>52.6</b>	<b>99.6</b>

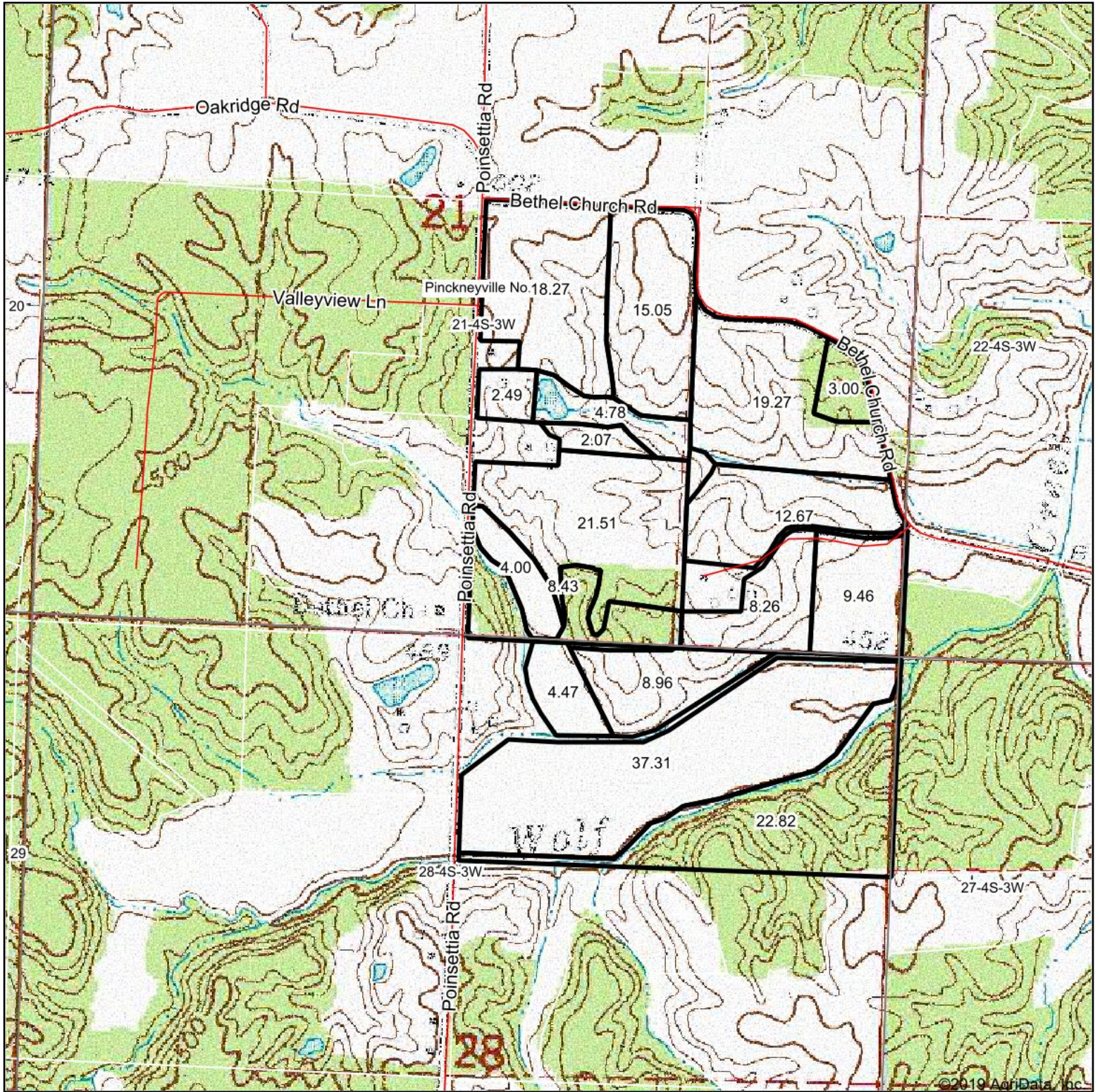
**Table: Optimum Crop Productivity Ratings for Illinois Soil by K.R. Olson and J.M. Lang, Office of Research, ACES, University of Illinois at Champaign-Urbana.** Version: 1/2/2012 Amended Table S2 B811

Crop yields and productivity indices for optimum management (B811) are maintained at the following NRES web site: <http://soilproductivity.nres.illinois.edu/>

\*\* Indexes adjusted for slope and erosion according to Bulletin 811 Table S3

Soils data provided by USDA and NRCS. Soils data provided by University of Illinois at Champaign-Urbana.

# Topography Map



map center: 38° 9' 33.06, -89° 25' 57.52

0ft 955ft 1909ft



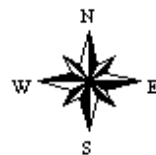
Maps Provided By:



© AgriData, Inc. 2019

www.AgrIDataInc.com

21-4S-3W  
Perry County  
Illinois



4/20/2019