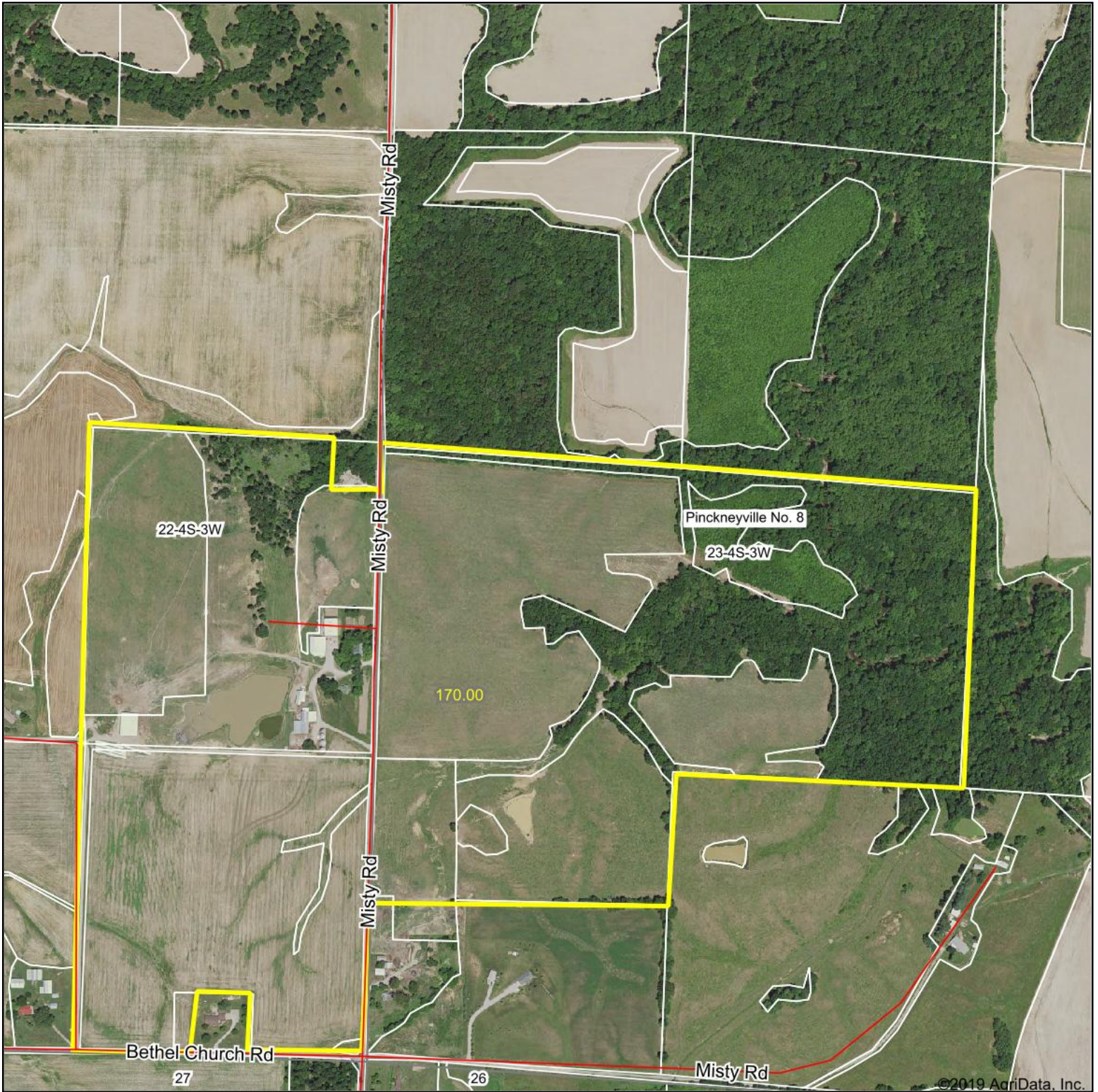


Aerial Map



©2019 AgriData, Inc.

map center: 38° 9' 48.83, -89° 24' 18.46

0ft 669ft 1339ft



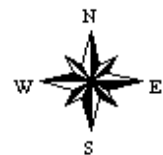
Maps Provided By:



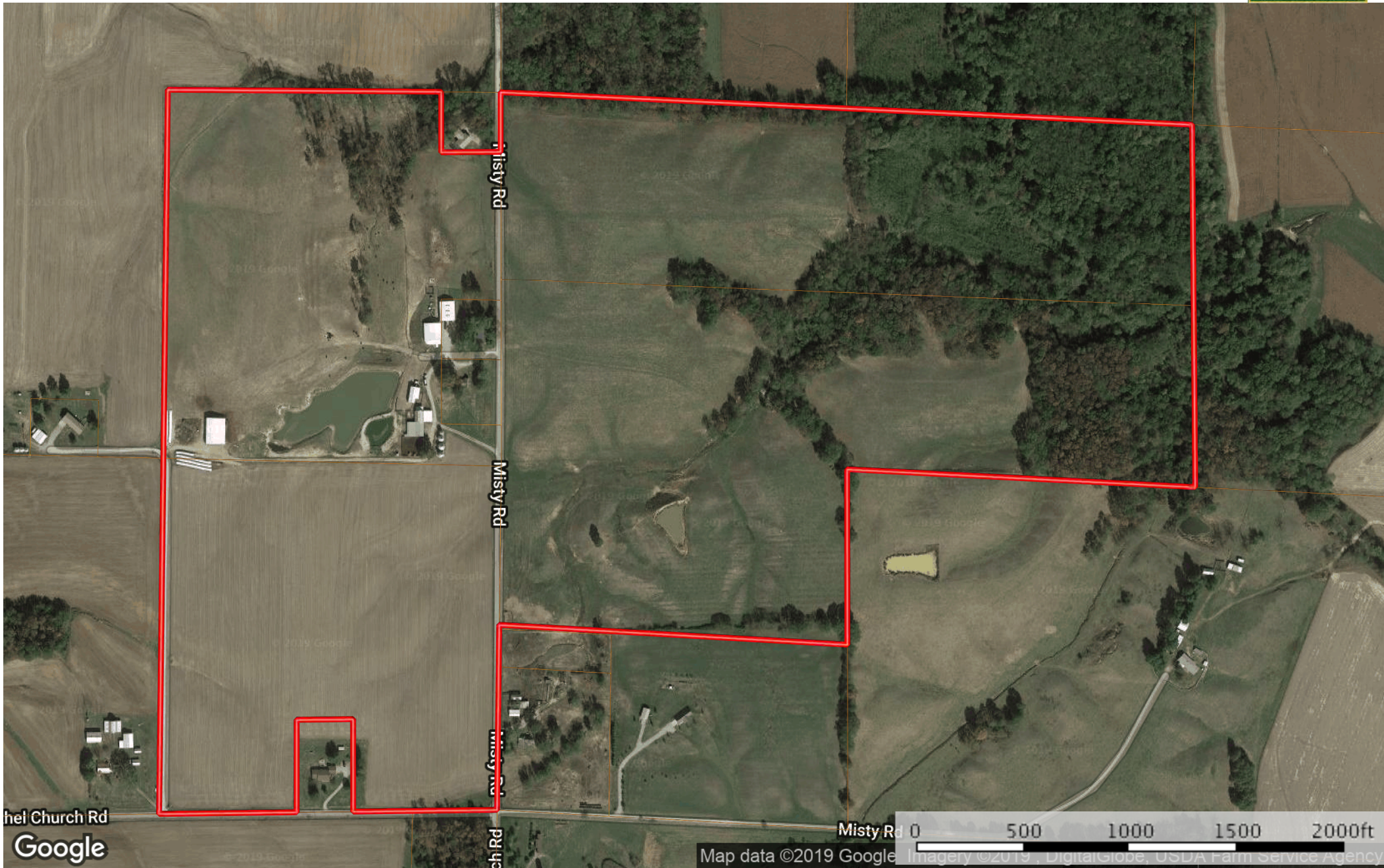
© AgriData, Inc. 2019

www.AgridataInc.com

23-4S-3W
Perry County
Illinois

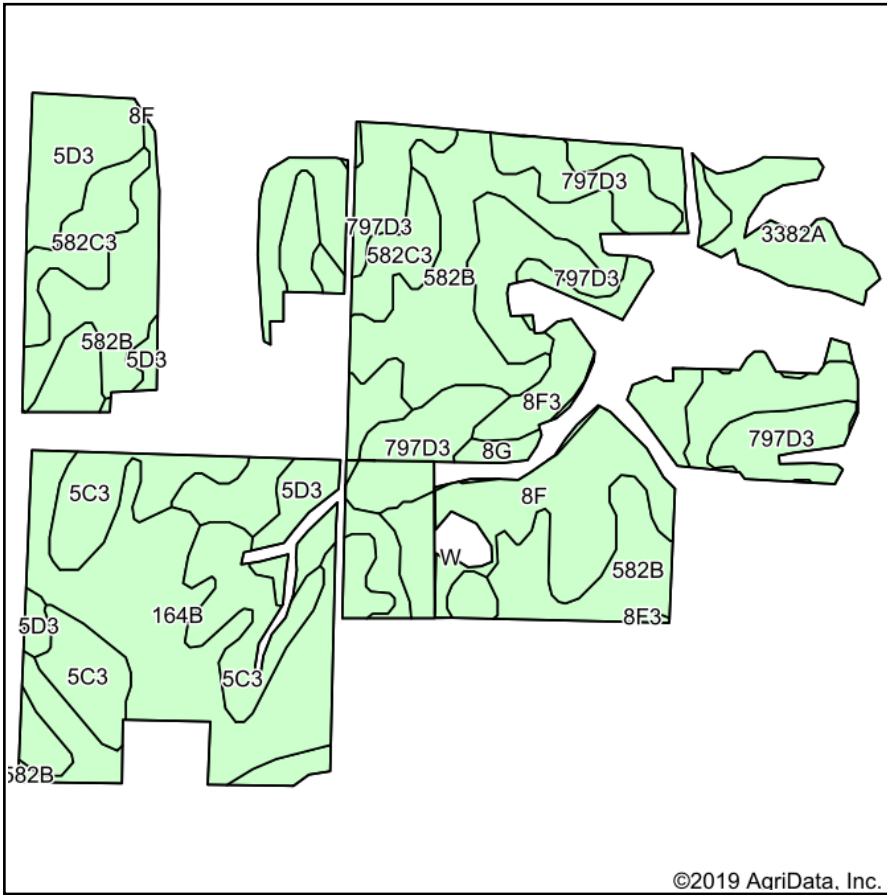


4/20/2019



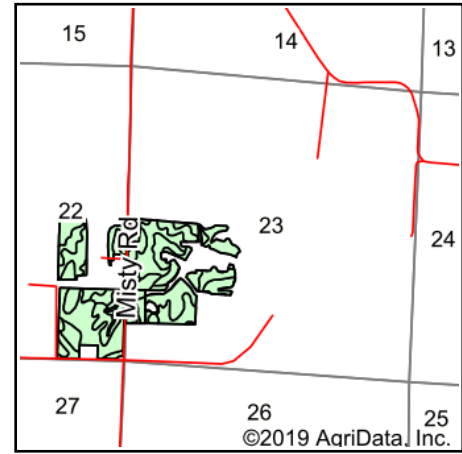
Boundary

Soils Map



Soils data provided by USDA and NRCS.

©2019 AgriData, Inc.



State: **Illinois**
 County: **Perry**
 Location: **23-4S-3W**
 Township: **Pinckneyville No. 8**
 Acres: **109.32**
 Date: **4/20/2019**



Maps Provided By:



© AgriData, Inc. 2019

www.AgrIDataInc.com



Area Symbol: IL145, Soil Area Version: 15

Code	Soil Description	Acres	Percent of field	Il. State Productivity Index Legend	Corn Bu/A	Soybeans Bu/A	Wheat Bu/A	Crop productivity index for optimum management
**582B	Homen silt loam, 2 to 5 percent slopes	25.11	23.0%		**149	**47	**55	**108
**797D3	Hickory-Homen silty clay loams, 10 to 18 percent slopes, severely eroded	18.04	16.5%		**107	**36	**42	**80
**164B	Stoy silt loam, 2 to 5 percent slopes	18.00	16.5%		**144	**47	**57	**108
**5D3	Blair silty clay loam, 10 to 18 percent slopes, severely eroded	11.94	10.9%		**95	**31	**38	**72
**5C3	Blair silty clay loam, 5 to 10 percent slopes, severely eroded	10.47	9.6%		**102	**33	**41	**77
**8F	Hickory silt loam, 18 to 35 percent slopes	9.84	9.0%		**86	**29	**35	**65
**582C3	Homen silty clay loam, 5 to 10 percent slopes, severely eroded	5.63	5.2%		**129	**40	**48	**94
**8F3	Hickory clay loam, 18 to 35 percent slopes, severely eroded	5.11	4.7%		**71	**24	**29	**54
3382A	Belknap silt loam, 0 to 2 percent slopes, frequently flooded	4.18	3.8%		156	52	63	117
**8G	Hickory silt loam, 35 to 60 percent slopes	1.00	0.9%		**58	**20	**24	**44
Weighted Average					119.9	39	46.6	89.1

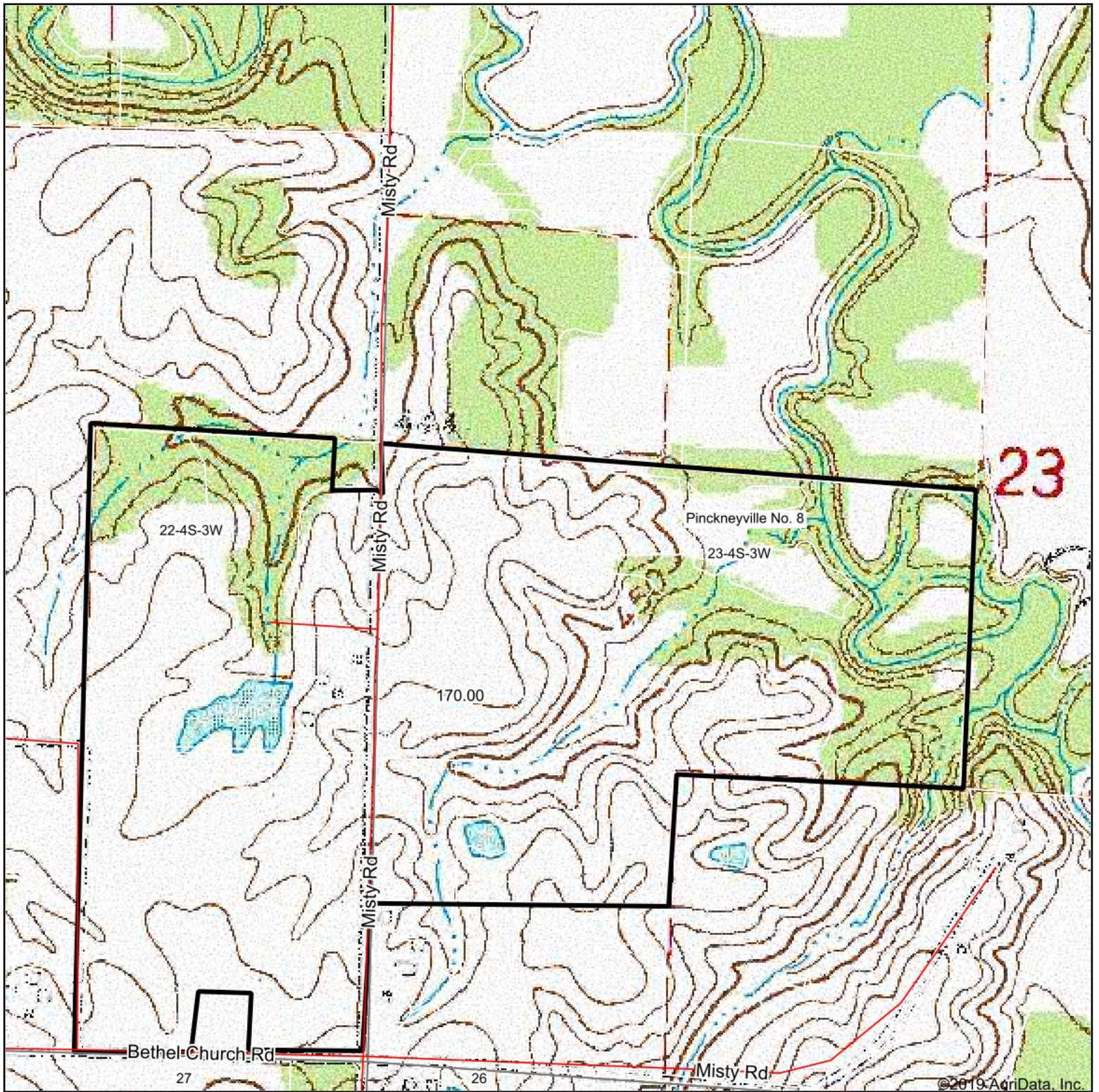
Table: Optimum Crop Productivity Ratings for Illinois Soil by K.R. Olson and J.M. Lang, Office of Research, ACES, University of Illinois at Champaign-Urbana. Version: 1/2/2012 Amended Table S2 B811

Crop yields and productivity indices for optimum management (B811) are maintained at the following NRES web site: <http://soilproductivity.nres.illinois.edu/>

** Indexes adjusted for slope and erosion according to Bulletin 811 Table S3

Soils data provided by USDA and NRCS. Soils data provided by University of Illinois at Champaign-Urbana.

Topography Map



map center: 38° 9' 48.83, -89° 24' 18.46

0ft 669ft 1339ft



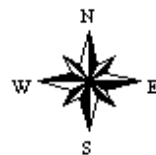
Maps Provided By:



© AgriData, Inc. 2019

www.AgrIDataInc.com

23-4S-3W
Perry County
Illinois



4/20/2019