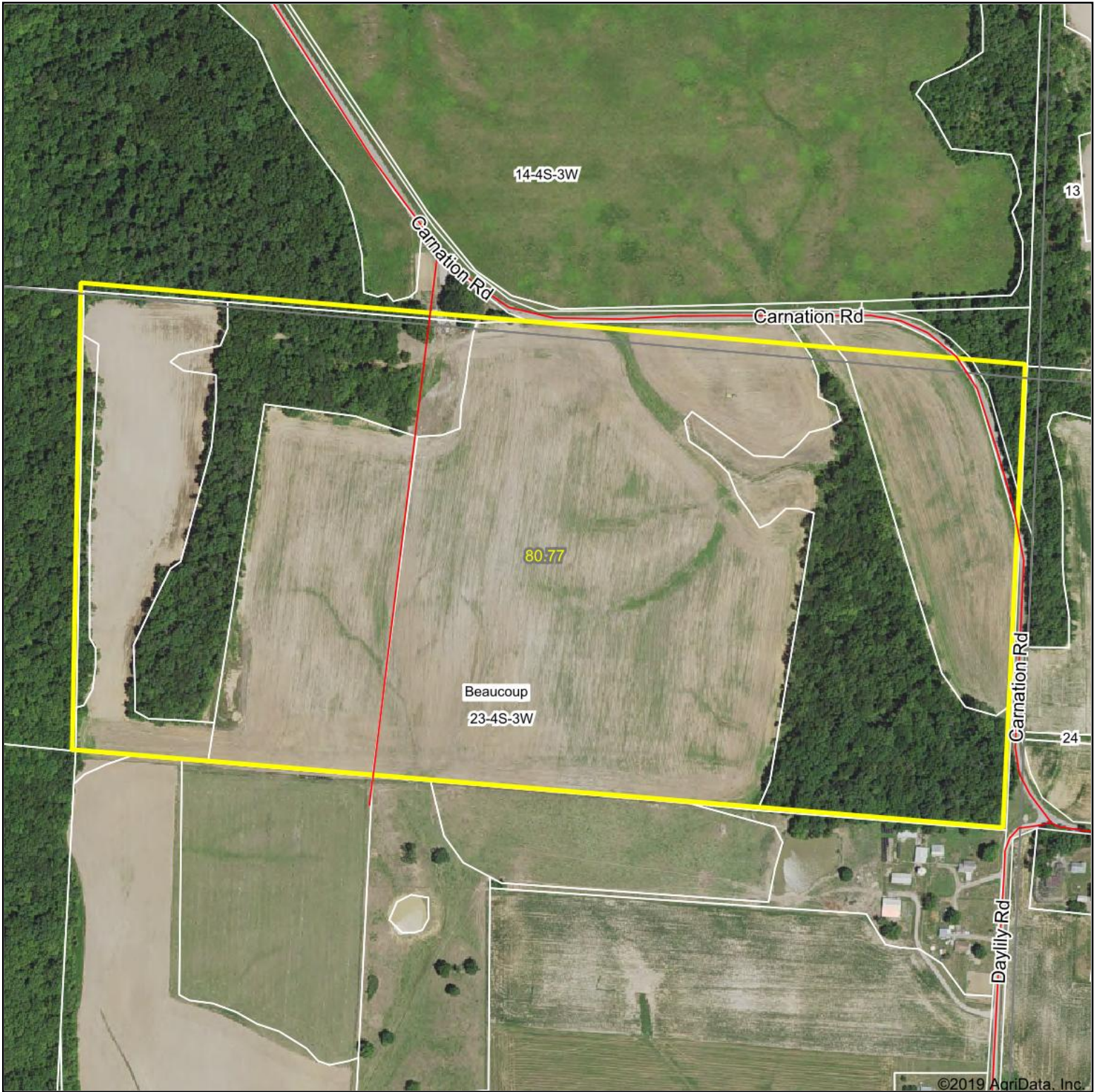


# Aerial Map



map center: 38° 10' 11.72, -89° 23' 38.42

0ft 443ft 886ft



Maps Provided By:  
**surety**  
CUSTOMIZED ONLINE MAPPING  
© AgriData, Inc. 2019 www.AgriDataInc.com

**23-4S-3W**  
**Perry County**  
**Illinois**

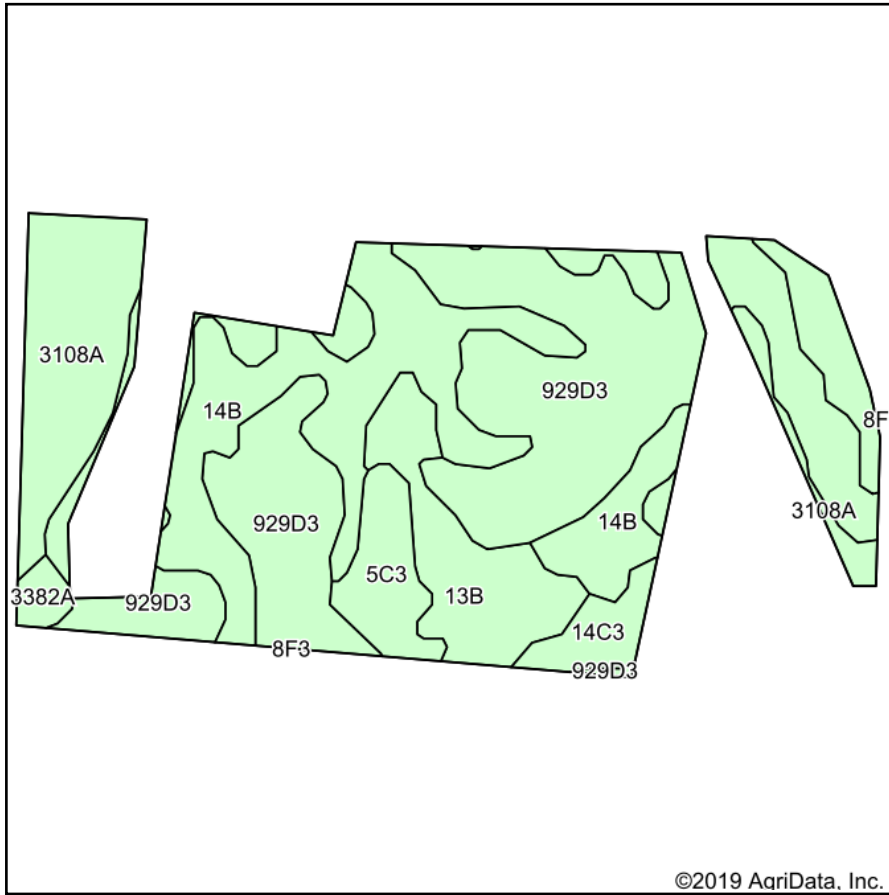


4/20/2019

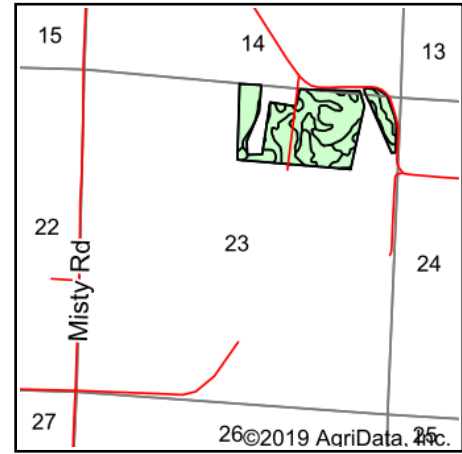


Boundary

# Soils Map



Soils data provided by USDA and NRCS.



State: **Illinois**  
 County: **Perry**  
 Location: **23-4S-3W**  
 Township: **Beaucoup**  
 Acres: **56.99**  
 Date: **4/29/2019**



**Area Symbol: IL145, Soil Area Version: 15**

Code	Soil Description	Acres	Percent of field	Il. State Productivity Index Legend	Corn Bu/A	Soybeans Bu/A	Wheat Bu/A	Crop productivity index for optimum management
**929D3	Hickory-Ava silty clay loams, 10 to 18 percent slopes, severely eroded	24.48	43.0%		**89	**30	**37	**68
**14B	Ava silt loam, 2 to 5 percent slopes	15.23	26.7%		**134	**44	**54	**99
3108A	Bonnie silt loam, 0 to 2 percent slopes, frequently flooded	7.23	12.7%		149	49	59	111
**13B	Bluford silt loam, 2 to 5 percent slopes	5.16	9.1%		**135	**44	**54	**100
**5C3	Blair silty clay loam, 5 to 10 percent slopes, severely eroded	2.67	4.7%		**102	**33	**41	**77
**14C3	Ava silty clay loam, 5 to 10 percent slopes, severely eroded	1.57	2.8%		**100	**33	**41	**74
3382A	Belknap silt loam, 0 to 2 percent slopes, frequently flooded	0.65	1.1%		156	52	63	117
<b>Weighted Average</b>					<b>114.5</b>	<b>37.9</b>	<b>46.5</b>	<b>85.8</b>

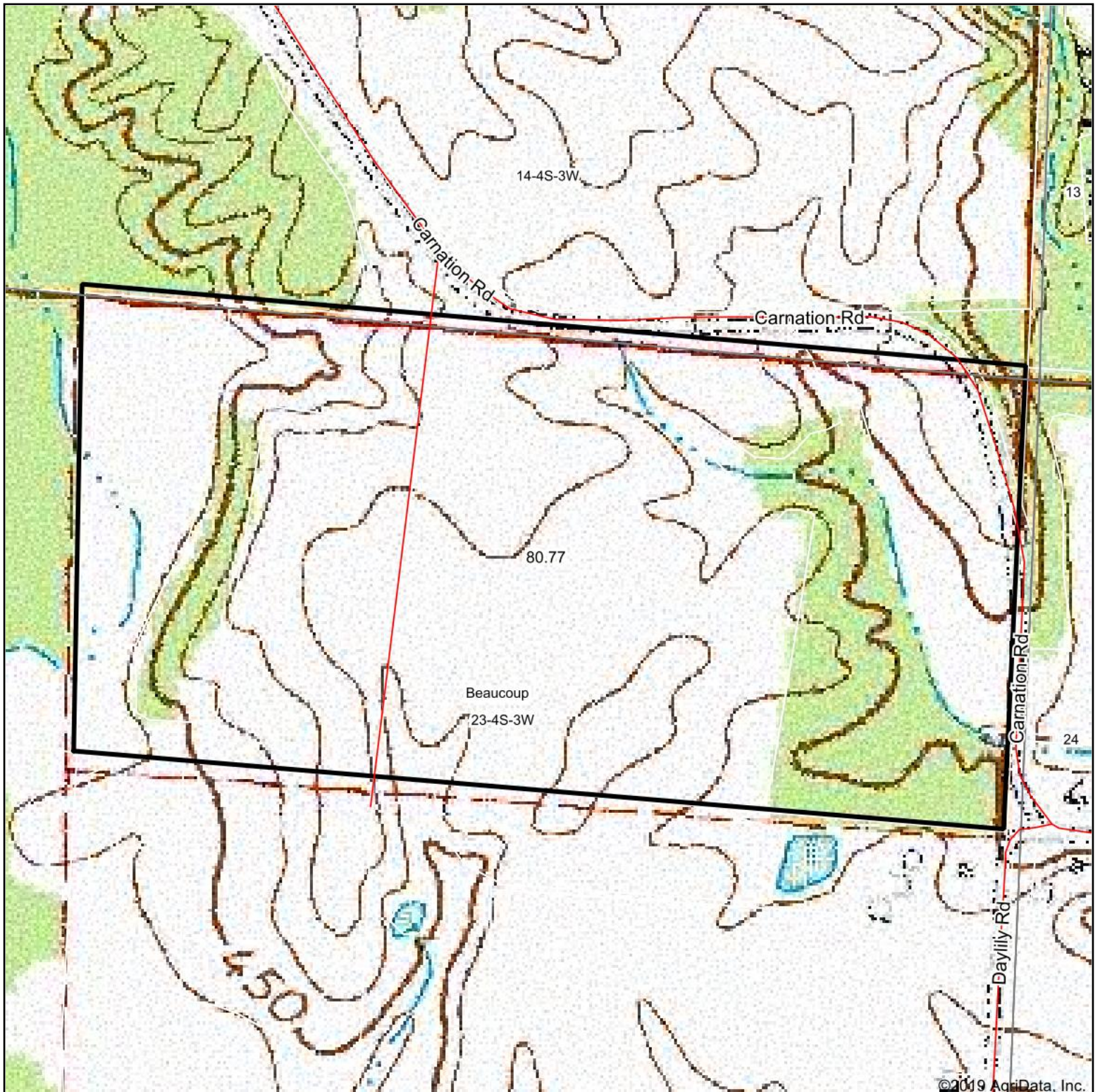
**Table: Optimum Crop Productivity Ratings for Illinois Soil by K.R. Olson and J.M. Lang, Office of Research, ACES, University of Illinois at Champaign-Urbana.** Version: 1/2/2012 Amended Table S2 B811

Crop yields and productivity indices for optimum management (B811) are maintained at the following NRES web site: <http://soilproductivity.nres.illinois.edu/>

\*\* Indexes adjusted for slope and erosion according to Bulletin 811 Table S3

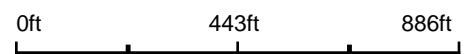
Soils data provided by USDA and NRCS. Soils data provided by University of Illinois at Champaign-Urbana.

# Topography Map



©2019 AgriData, Inc.

map center: 38° 10' 11.72, -89° 23' 38.42



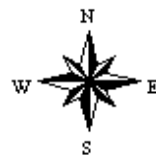
Maps Provided By:



© AgriData, Inc. 2019

www.AgrIDataInc.com

**23-4S-3W**  
**Perry County**  
**Illinois**



4/20/2019