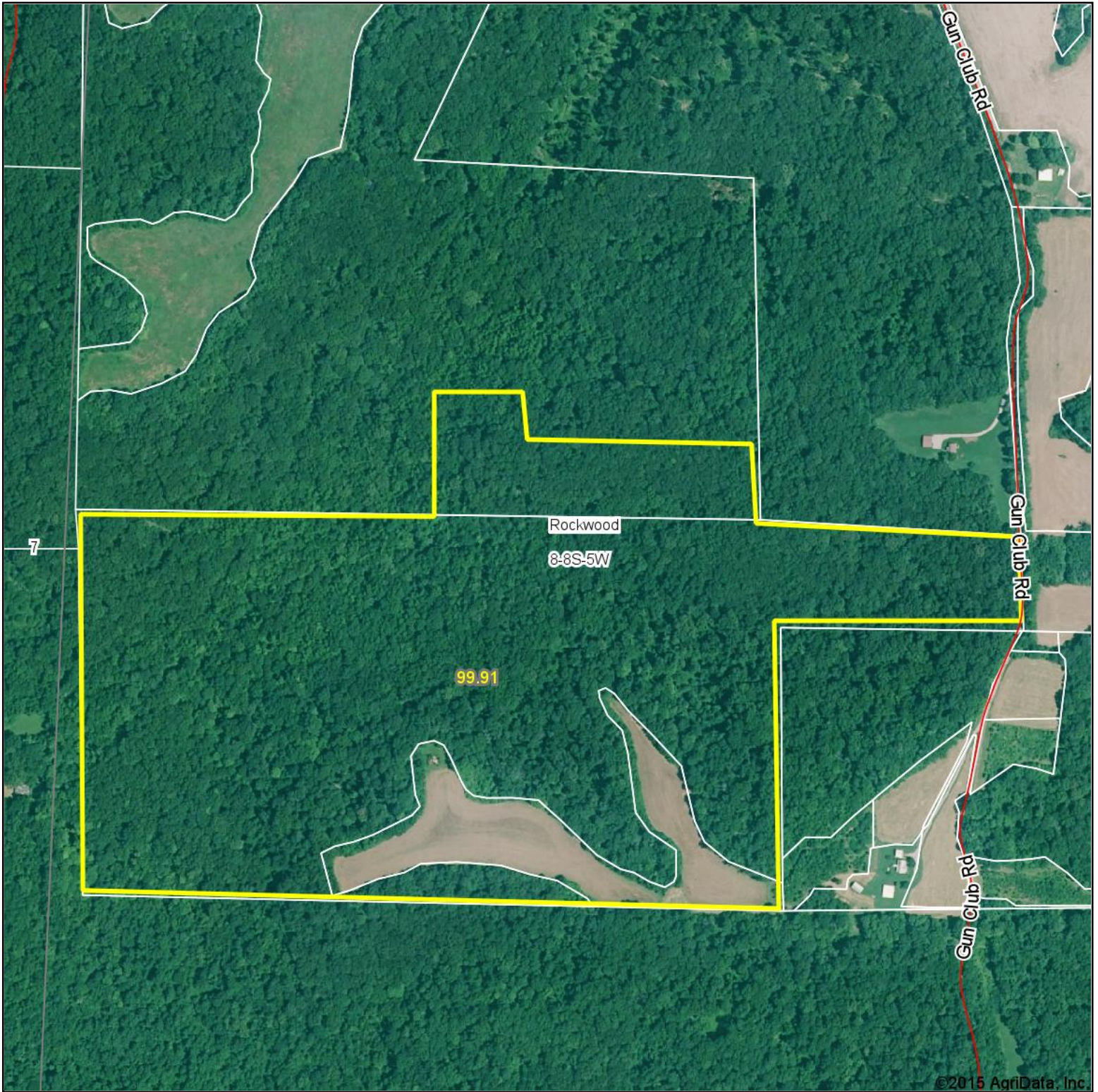


# Aerial Map



map center: 37° 50' 51.64, 89° 41' 4.11

0ft 577ft 1155ft



Maps Provided By:



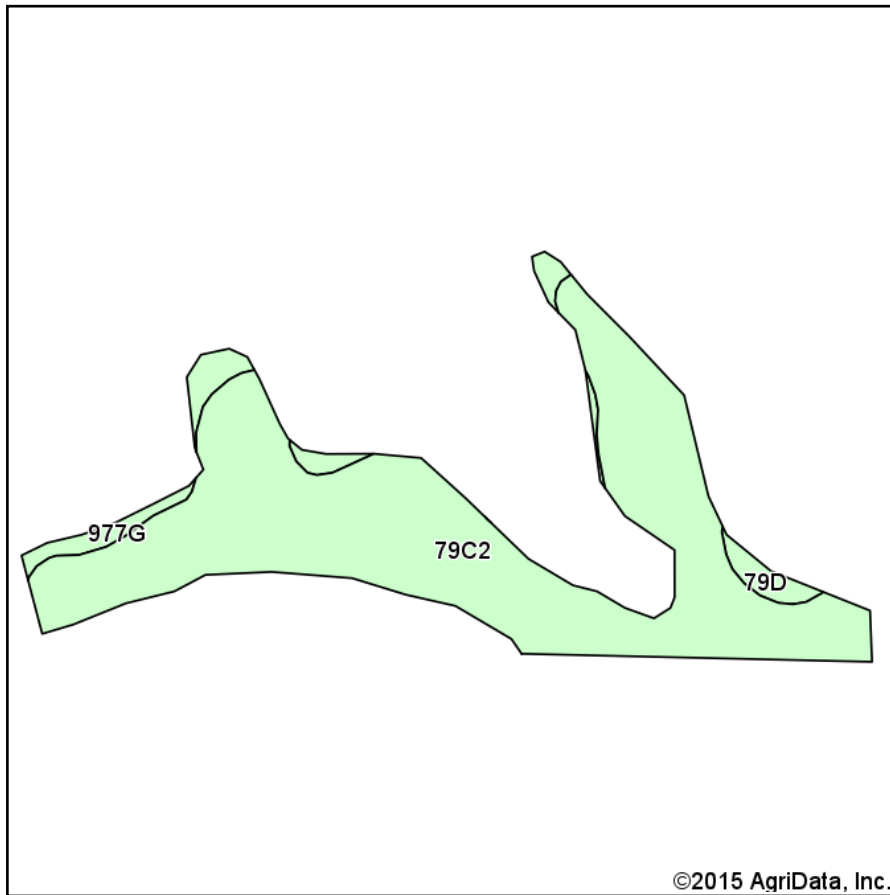
© AgriData, Inc. 2015 www.AgriDataInc.com

**8-8S-5W**  
**Randolph County**  
**Illinois**

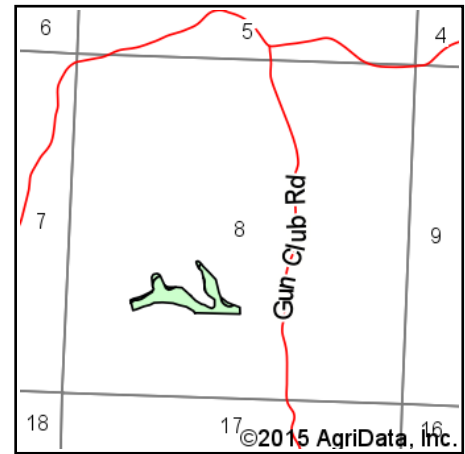


1/10/2016

# Soil Map



Soils data provided by USDA and NRCS.



State: **Illinois**  
 County: **Randolph**  
 Location: **8-8S-5W**  
 Township: **Rockwood**  
 Acres: **10.39**  
 Date: **1/10/2016**



Maps Provided By:



## Area Symbol: IL157, Soil Area Version: 9

Code	Soil Description	Acres	Percent of field	Il. State Productivity Index Legend	Corn Bu/A	Soybeans Bu/A	Wheat Bu/A	Crop productivity index for optimum management
**79C2	Menfro silt loam, 5 to 10 percent slopes, eroded	9.42	90.7%		**153	**47	**59	**112
**977G	Neotoma-Wellston complex, 35 to 60 percent slopes	0.74	7.1%		**49	**17	**19	**37
**79D	Menfro silt loam, 10 to 18 percent slopes	0.23	2.2%		**153	**47	**59	**112
Weighted Average					145.6	44.9	56.2	106.7

Area Symbol: IL157, Soil Area Version: 9

**Table: Optimum Crop Productivity Ratings for Illinois Soil by K.R. Olson and J.M. Lang, Office of Research, ACES, University of Illinois at Champaign-Urbana.** Version: 1/2/2012 Amended Table S2 B811

Crop yields and productivity indices for optimum management (B811) are maintained at the following NRES web site:

<https://www.ideals.illinois.edu/handle/2142/1027/>

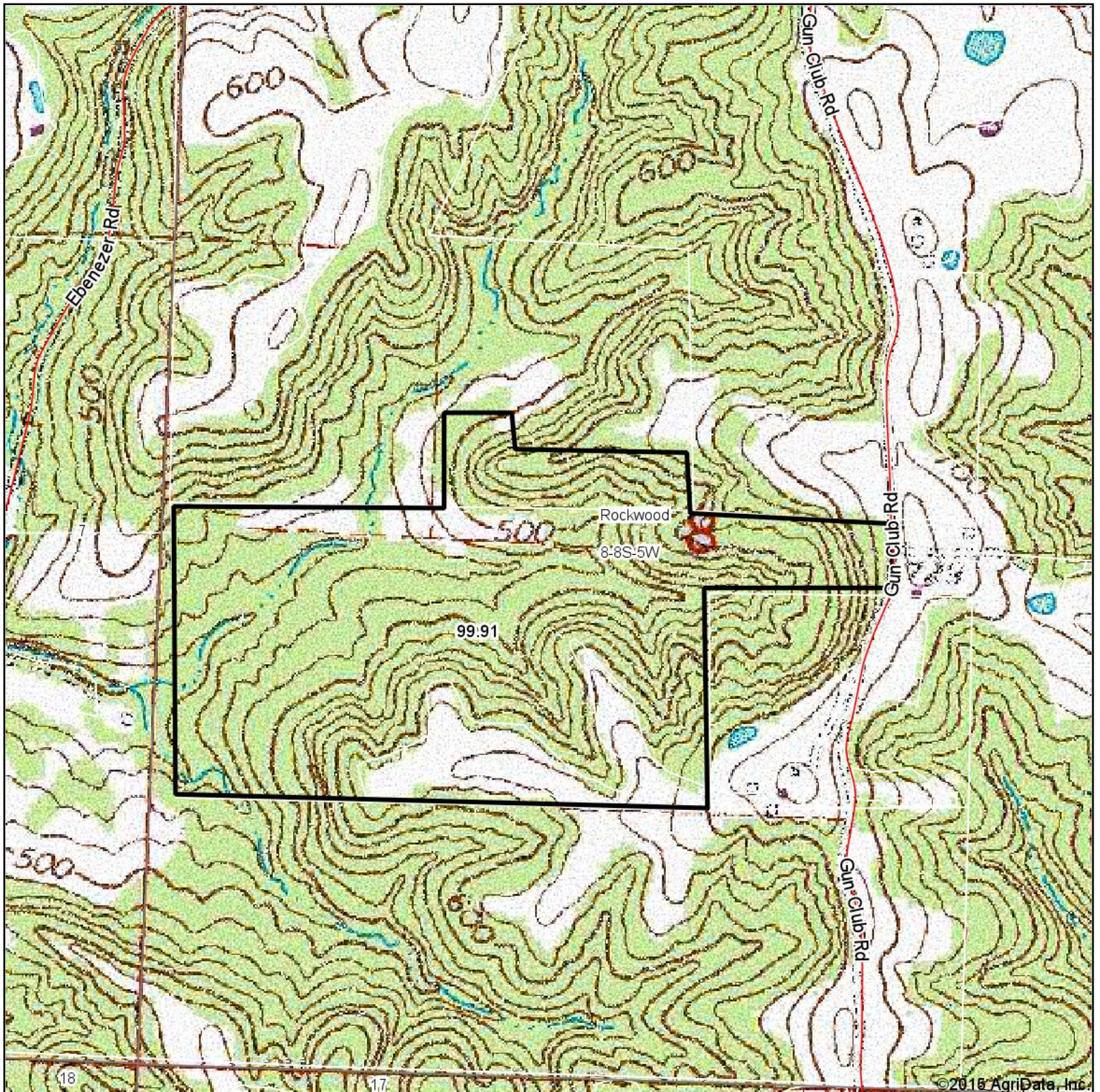
\*\* Indexes adjusted for slope and erosion according to Bulletin 811 Table S3

Soils data provided by USDA and NRCS. Soils data provided by University of Illinois at Champaign-Urbana.

\*c: Using Capabilities Class Dominant Condition Aggregation Method



# Topography Map



map center: 37° 50' 50.85, 89° 41' 3.01

0ft 755ft 1509ft

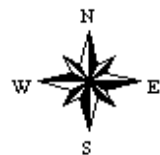


Maps Provided By:



© AgriData, Inc. 2015 www.AgrIDataInc.com

**8-8S-5W**  
**Randolph County**  
**Illinois**



1/10/2016