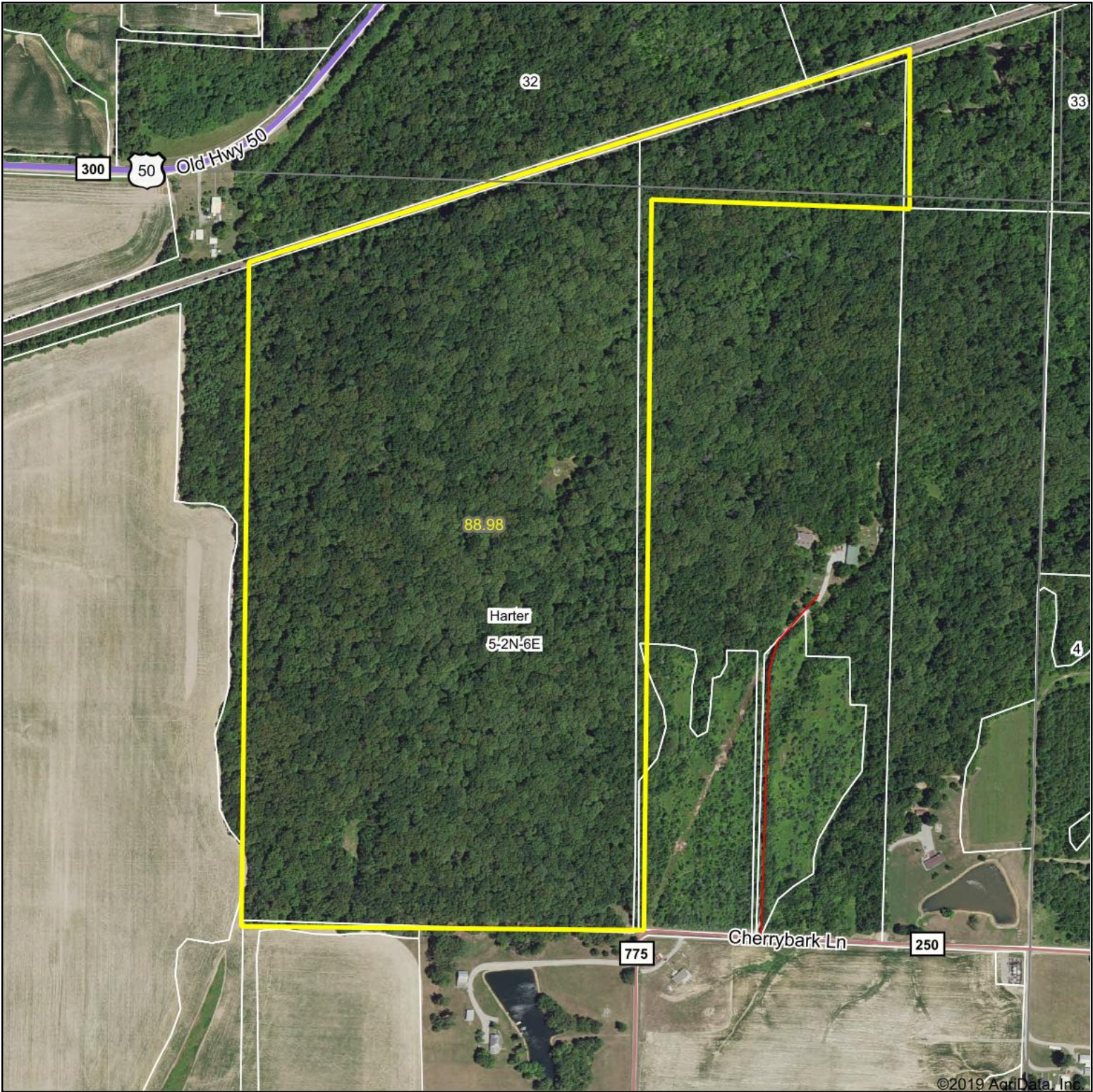


Aerial Map

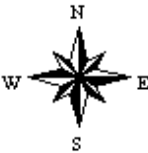


map center: 38° 38' 49.1, -88° 33' 3.74



Maps Provided By:  
 **surety**  
CUSTOMIZED ONLINE MAPPING  
© AgriData, Inc. 2019 [www.AgriDataInc.com](http://www.AgriDataInc.com)

**5-2N-6E**  
**Clay County**  
**Illinois**

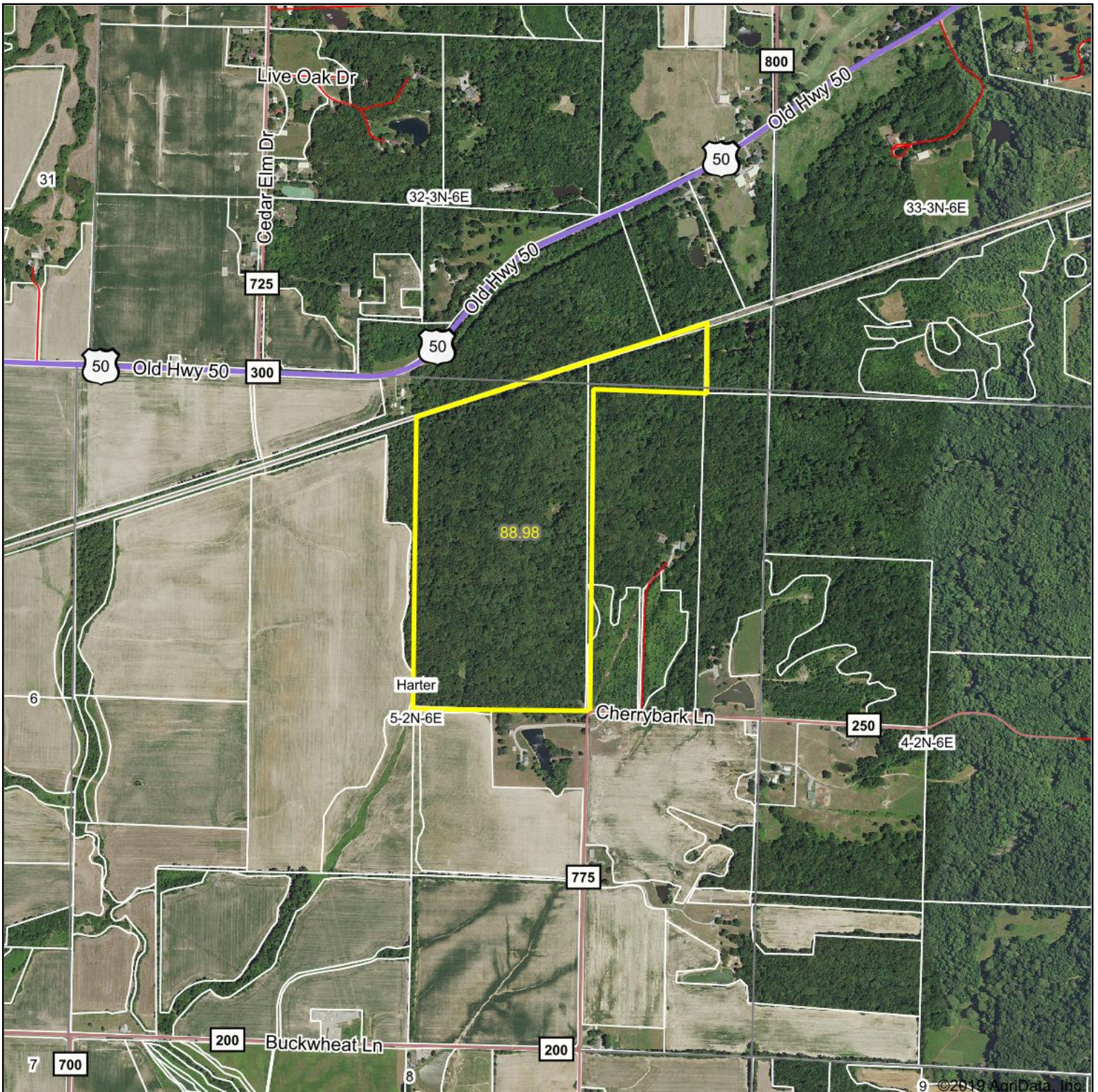


3/9/2019

Field borders provided by Farm Service Agency as of 5/21/2008. Soils data provided by University of Illinois at Champaign-Urbana.



# Aerial Map



map center: 38° 38' 48.62, -88° 33' 3.73

0ft 1224ft 2448ft



Maps Provided By:



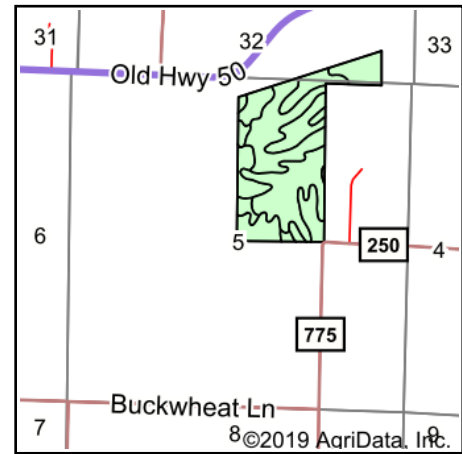
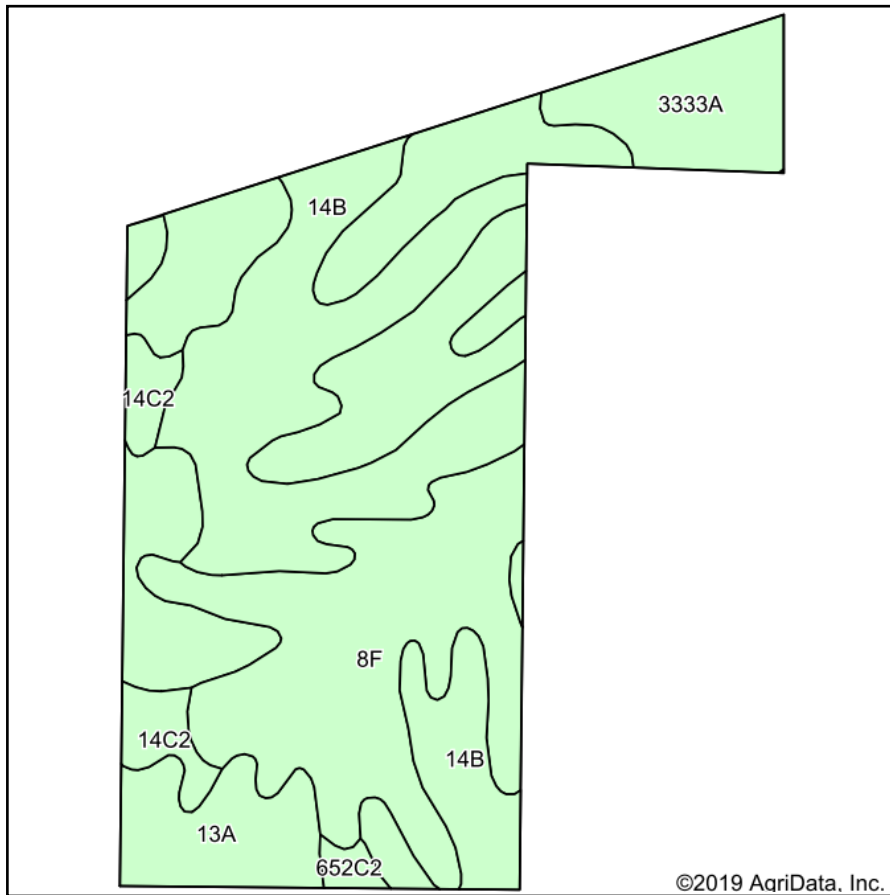
**5-2N-6E**  
**Clay County**  
**Illinois**



3/9/2019



# Soils Map



State: **Illinois**  
 County: **Clay**  
 Location: **5-2N-6E**  
 Township: **Harter**  
 Acres: **88.98**  
 Date: **3/9/2019**



Maps Provided By:  
**surety**  
 CUSTOMIZED ONLINE MAPPING  
 © AgriData, Inc. 2019 www.AgriDataInc.com



## Area Symbol: IL025, Soil Area Version: 13

Code	Soil Description	Acres	Percent of field	Il. State Productivity Index Legend	Corn Bu/A	Soybeans Bu/A	Wheat Bu/A	Grass-legume hay, T/A	Crop productivity index for optimum management
**8F	Hickory silt loam, 18 to 35 percent slopes	39.29	44.2%		**86	**29	**35	0.00	**65
**14B	Ava silt loam, 2 to 5 percent slopes	26.07	29.3%		**134	**44	**54	0.00	**99
13A	Bluford silt loam, 0 to 2 percent slopes	11.49	12.9%		136	44	55	3.39	101
3333A	Wakeland silt loam, 0 to 2 percent slopes, frequently flooded	7.63	8.6%		174	56	68	5.14	128
**14C2	Ava silt loam, 5 to 10 percent slopes, eroded	3.82	4.3%		**122	**40	**50	0.00	**90
**652C2	Passport silt loam, 5 to 10 percent slopes, eroded	0.68	0.8%		**116	**39	**51	**3.85	**88
<b>Weighted Average</b>					<b>115.8</b>	<b>38.2</b>	<b>46.7</b>	<b>0.91</b>	<b>86.3</b>

**Table: Optimum Crop Productivity Ratings for Illinois Soil by K.R. Olson and J.M. Lang, Office of Research, ACES, University of Illinois at Champaign-Urbana.** Version: 1/2/2012 Amended Table S2 B811

Crop yields and productivity indices for optimum management (B811) are maintained at the following NRES web site: <http://soilproductivity.nres.illinois.edu/>

\*\* Indexes adjusted for slope and erosion according to Bulletin 811 Table S3

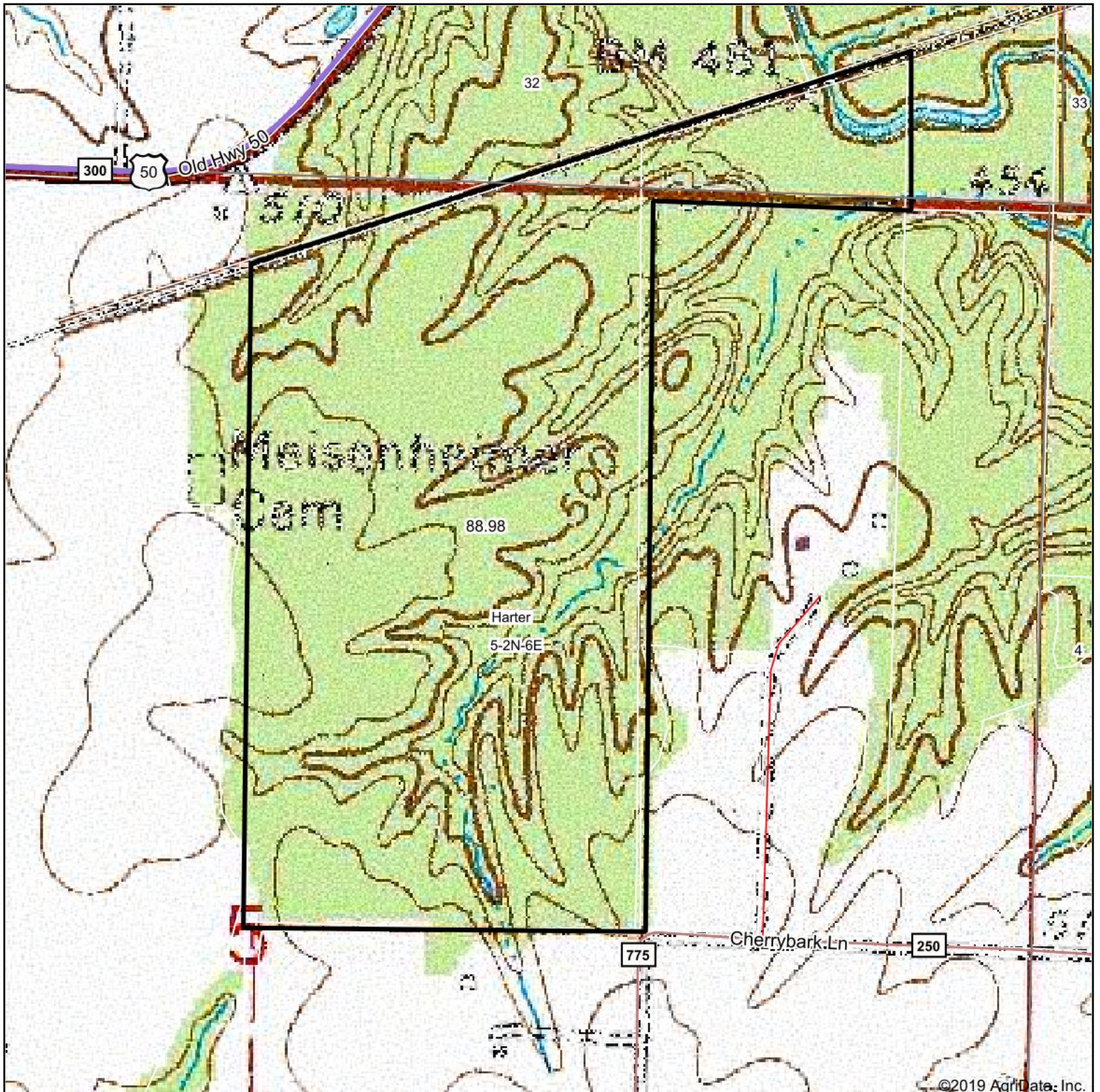
e Soils in the well drained group were not rated for grass-legume and are shown with a zero "0".

Soils data provided by USDA and NRCS. Soils data provided by University of Illinois at Champaign-Urbana.

\*c: Using Capabilities Class Dominant Condition Aggregation Method



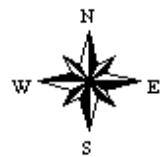
# Topography Map



map center: 38° 38' 49.1, -88° 33' 3.74

0ft 538ft 1076ft

**5-2N-6E**  
**Clay County**  
**Illinois**



3/9/2019



Maps Provided By:



© AgriData, Inc. 2019

www.AgridataInc.com