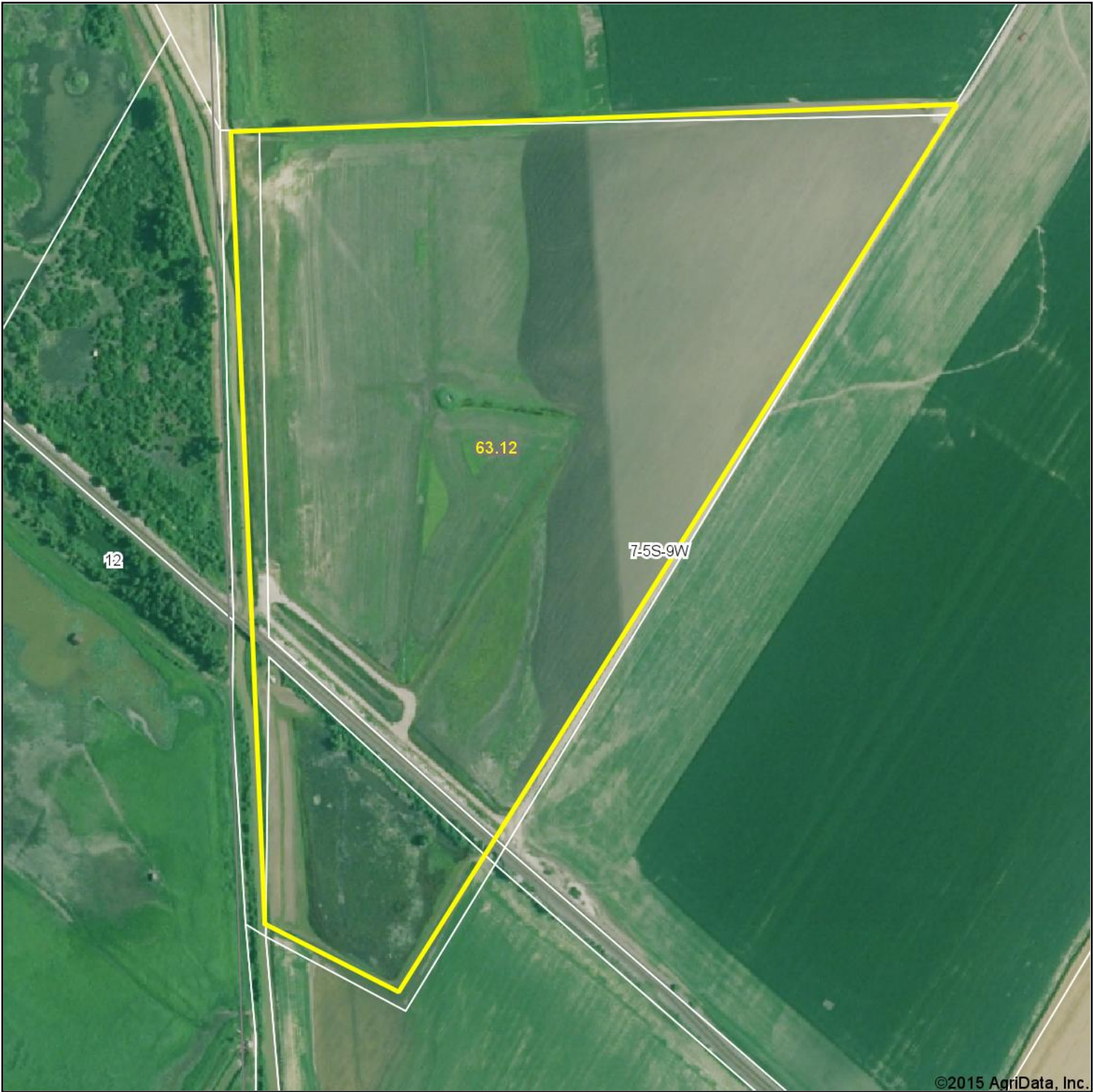


Aerial Map



©2015 AgriData, Inc.



Maps Provided By:
 **surety**
CUSTOMIZED ONLINE MAPPING
© AgriData, Inc. 2015 www.AgriDataInc.com

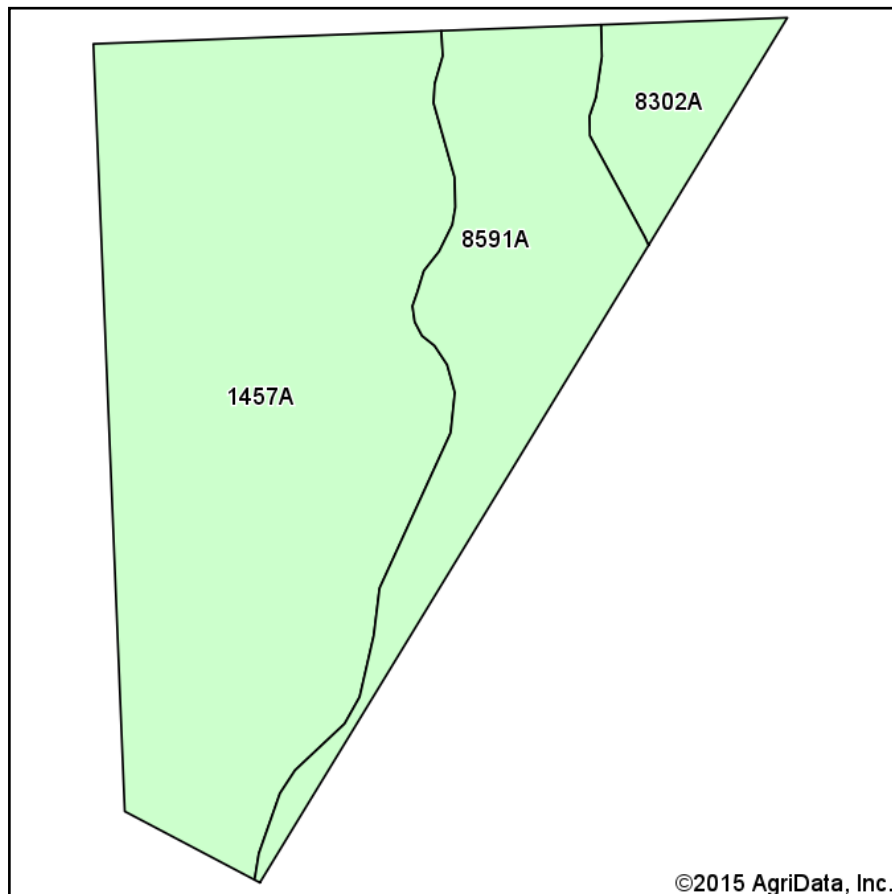
7-5S-9W
Monroe County
Illinois

map center: 38° 6' 56.64, 90° 8' 35.71
scale: 4900

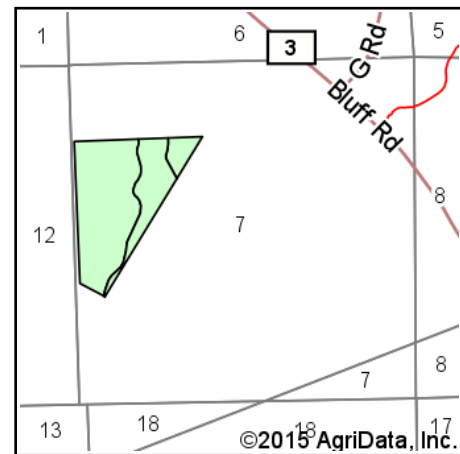


9/3/2015

Soil Map



Soils data provided by USDA and NRCS.



State: **Illinois**
 County: **Monroe**
 Location: **7-5S-9W**
 Township: **Precinct 9**
 Acres: **64.83**
 Date: **9/3/2015**



Maps Provided By:



Area Symbol: IL133, Soil Area Version: 7

Code	Soil Description	Acres	Percent of field	Il. State Productivity Index Legend	Corn Bu/A	Soybeans Bu/A	Wheat Bu/A	Alfalfa <i>d</i> hay, T/A	Crop productivity index for optimum management
1457A	Booker clay, undrained, 0 to 2 percent slopes, occasionally flooded	44.41	68.5%		116	41	44	0.00	89
8591A	Fults silty clay, 0 to 2 percent slopes, occasionally flooded	15.82	24.4%		155	50	59	0.00	115
8302A	Ambraw silty clay loam, 0 to 2 percent slopes, occasionally flooded	4.60	7.1%		154	50	61	0.00	114
Weighted Average					128.2	43.8	48.9	0.00	97.1

Area Symbol: IL133, Soil Area Version: 7

Table: Optimum Crop Productivity Ratings for Illinois Soil by K.R. Olson and J.M. Lang, Office of Research, ACES, University of Illinois at Champaign-Urbana. Version: 1/2/2012 Amended Table S2 B811 (Updated 1/10/2012)

Crop yields and productivity indices for optimum management (B811) are maintained at the following NRES web site:

<https://www.ideals.illinois.edu/handle/2142/1027/>

** Indexes adjusted for slope and erosion according to Bulletin 811 Table S3

d Soils in the poorly drained group were not rated for alfalfa and are shown with a zero "0".

Soils data provided by USDA and NRCS. Soils data provided by University of Illinois at Champaign-Urbana.

*c: Using Capabilities Class Dominant Condition Aggregation Method