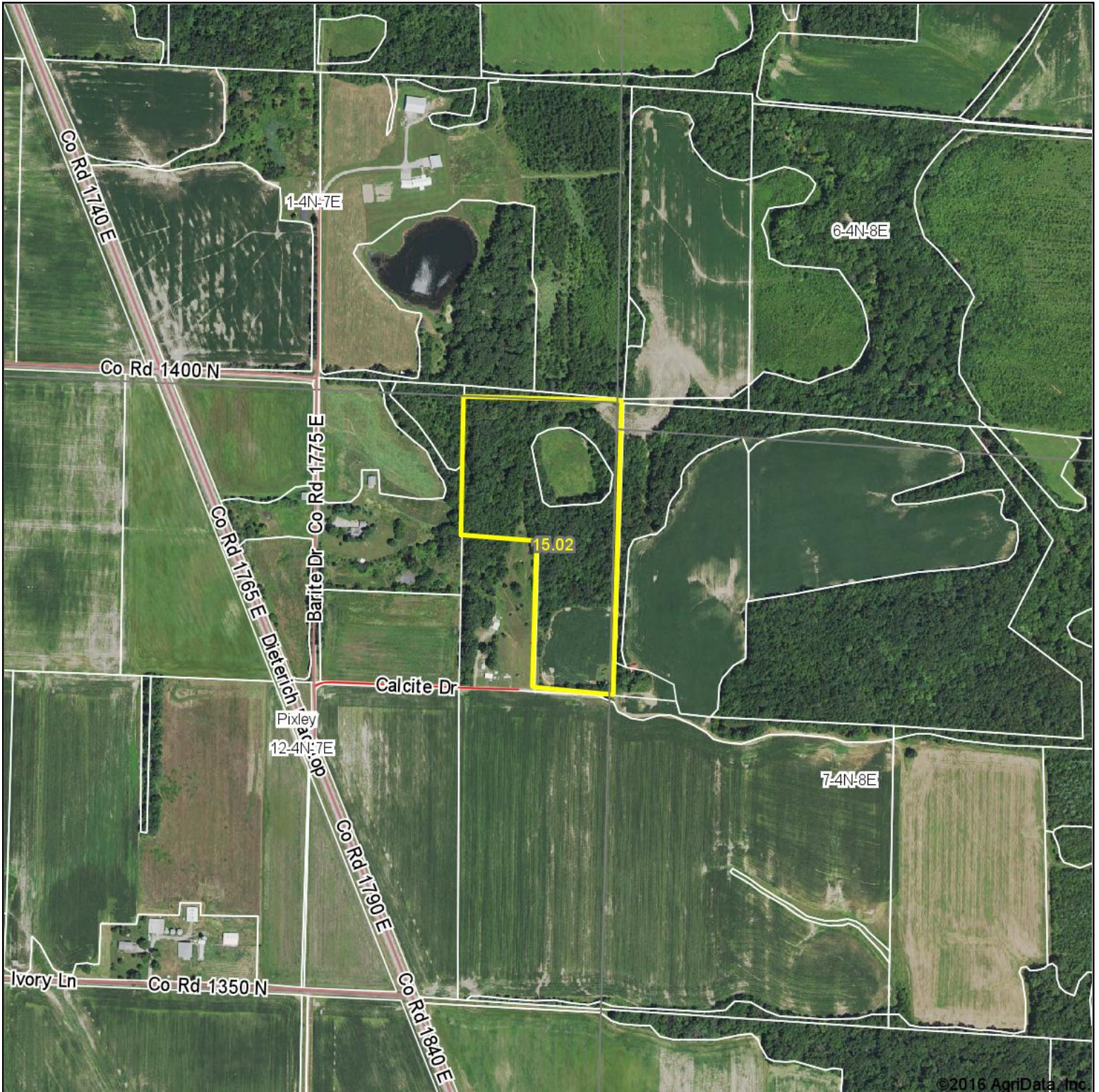
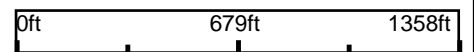


Aerial Map



map center: 38° 48' 22.83, 88° 21' 46.77



Maps Provided By:



© AgriData, Inc. 2016

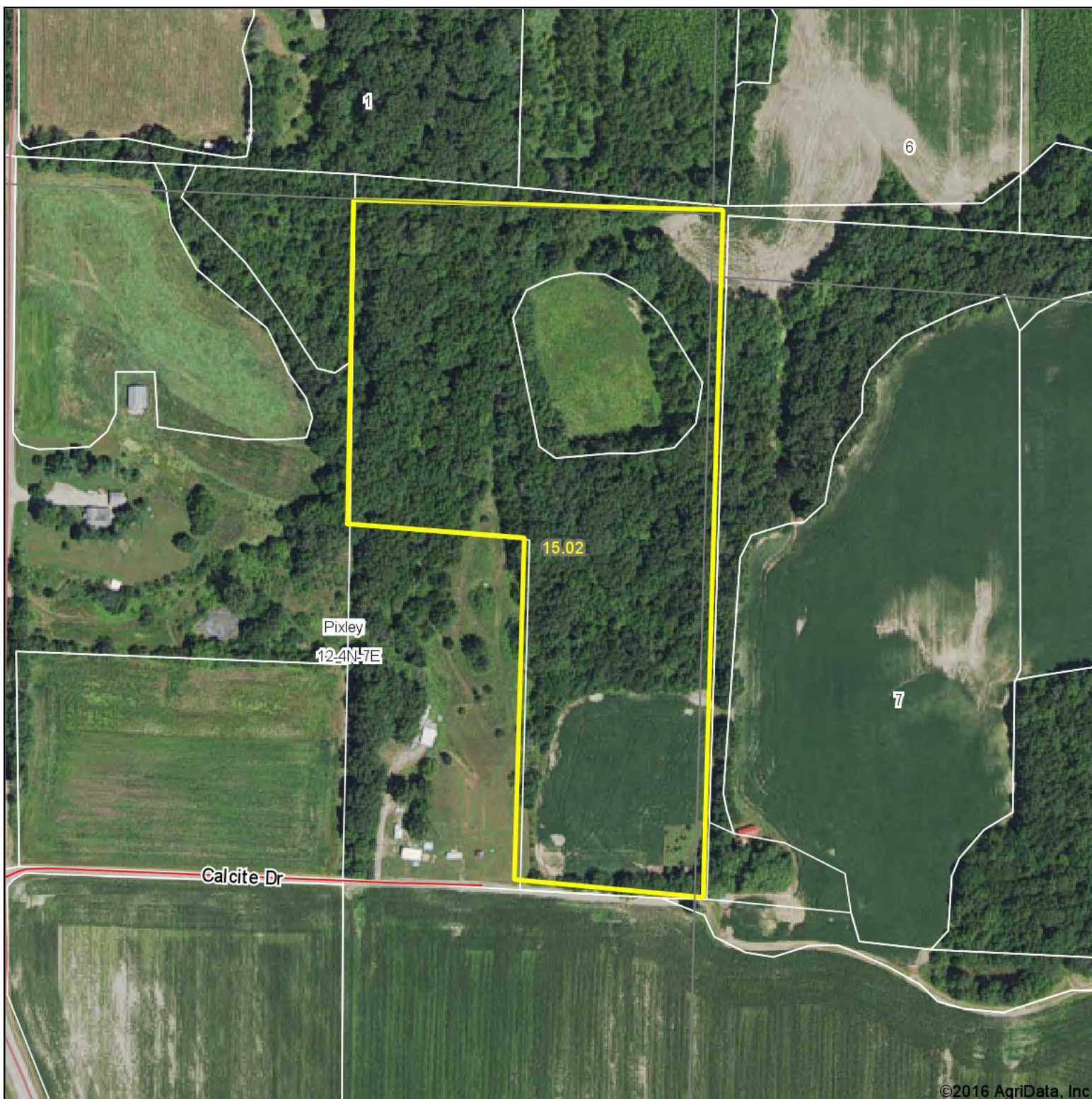
www.AgriDataInc.com

12-4N-7E
Clay County
Illinois



8/13/2016

Aerial Map



©2016 AgriData, Inc.



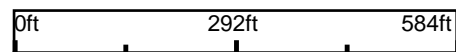
Maps Provided By:



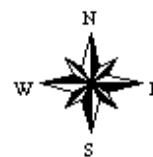
© AgriData, Inc. 2016

www.AgriDataInc.com

map center: 38° 48' 22.83, 88° 21' 46.77

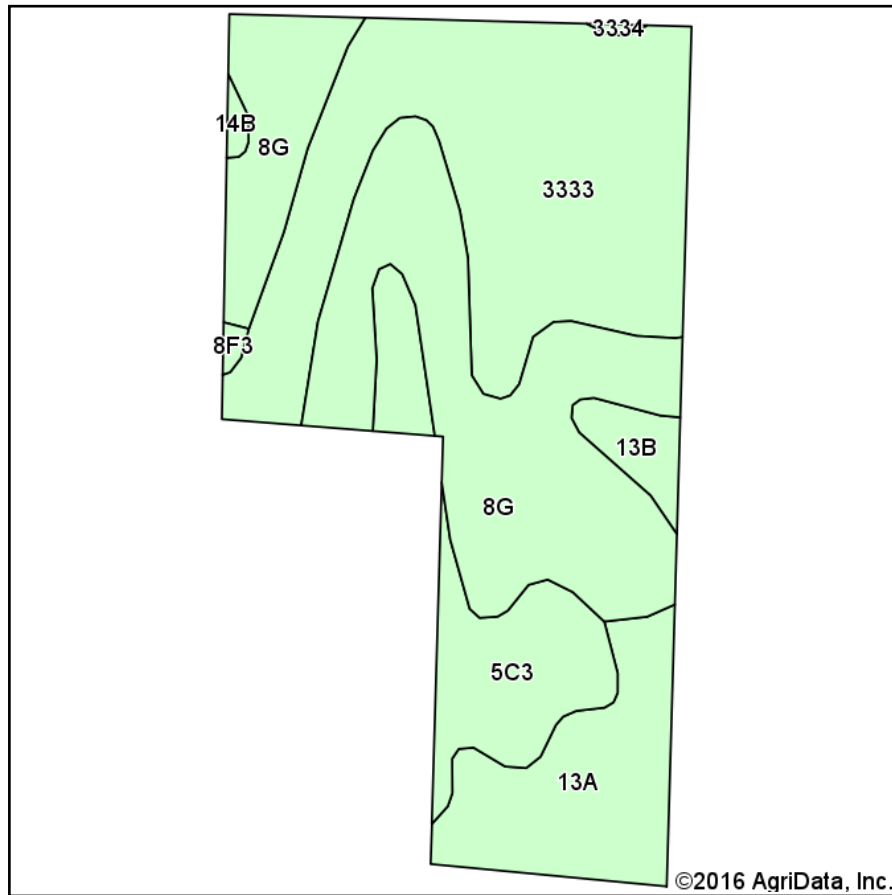


12-4N-7E
Clay County
Illinois

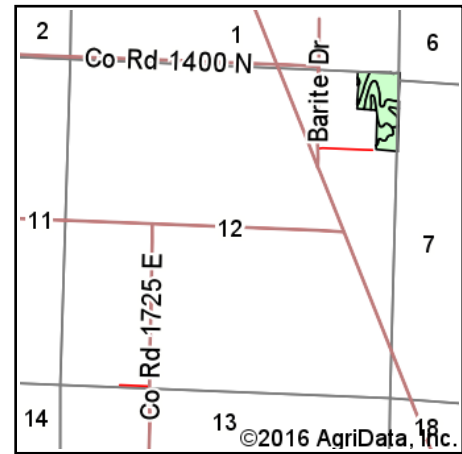


8/13/2016

Soils Map



Soils data provided by USDA and NRCS.



State: **Illinois**
 County: **Clay**
 Location: **12-4N-7E**
 Township: **Pixley**
 Acres: **15.02**
 Date: **8/13/2016**



Area Symbol: IL025, Soil Area Version: 10

Code	Soil Description	Acres	Percent of field	Il. State Productivity Index Legend	Corn Bu/A	Soybeans Bu/A	Wheat Bu/A	Grass-legume e hay, T/A	Crop productivity index for optimum management
3333	Wakeland silt loam, frequently flooded	5.50	36.6%		174	56	68	5.14	128
**8G	Hickory silt loam, 35 to 60 percent slopes	5.35	35.6%		**58	**20	**24	0.00	**44
13A	Bluford silt loam, 0 to 2 percent slopes	1.95	13.0%		136	44	55	3.39	101
**5C3	Passport silty clay loam, 5 to 10 percent slopes, severely eroded	1.79	11.9%		**102	**33	**41	**3.25	**77
**13B	Bluford silt loam, 2 to 5 percent slopes	0.37	2.5%		**135	**44	**54	**3.36	**100
**14B	Ava silt loam, 2 to 5 percent slopes	0.06	0.4%		**134	**44	**54	0.00	**99
Weighted Average					118	38.5	47	2.79	87.7

Area Symbol: IL025, Soil Area Version: 10

Table: Optimum Crop Productivity Ratings for Illinois Soil by K.R. Olson and J.M. Lang, Office of Research, ACES, University of Illinois at Champaign-Urbana. Version: 1/2/2012 Amended Table S2 B811

Crop yields and productivity indices for optimum management (B811) are maintained at the following NRES web site:
<https://www.ideals.illinois.edu/handle/2142/1027/>

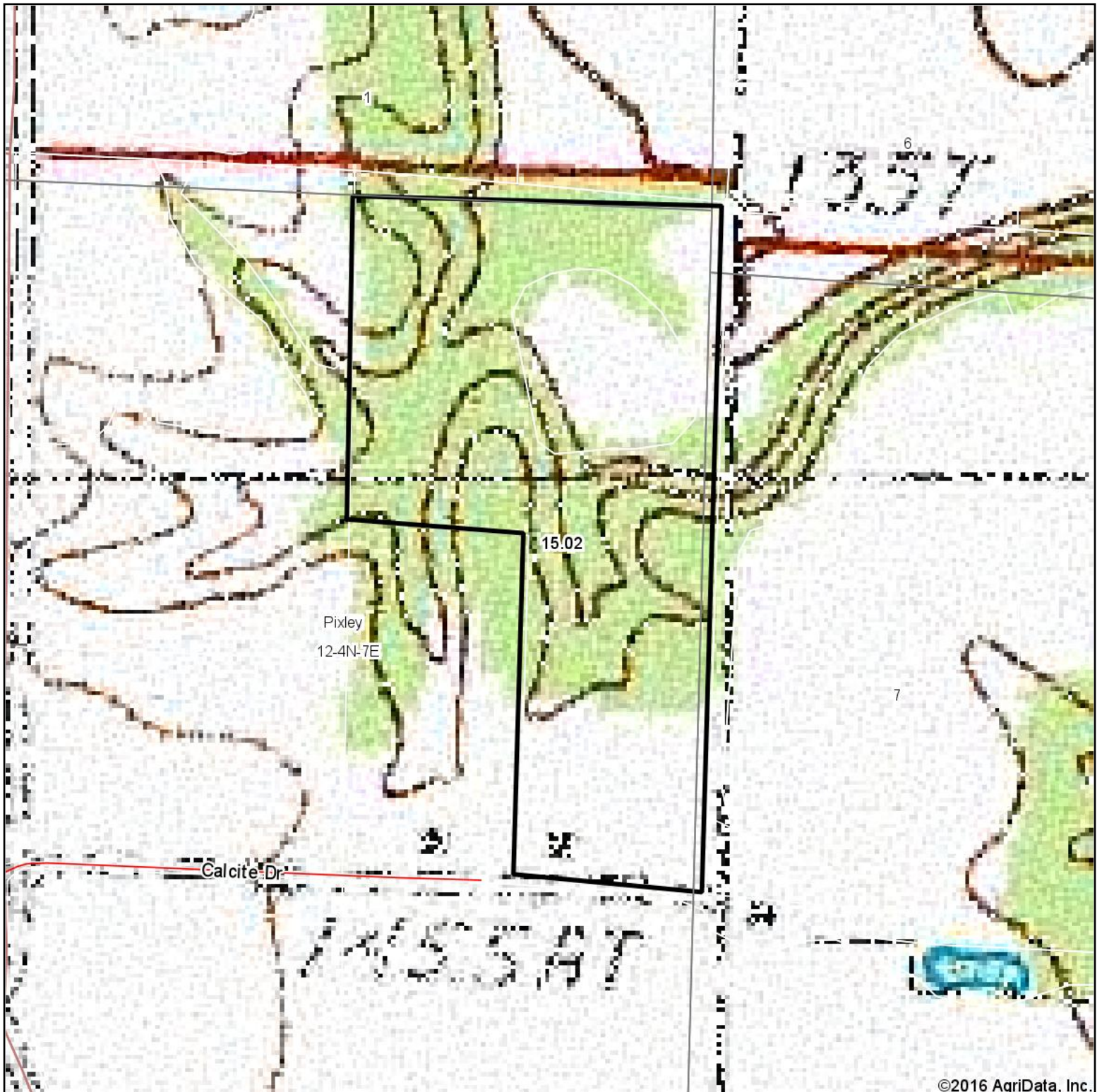
** Indexes adjusted for slope and erosion according to Bulletin 811 Table S3

e Soils in the well drained group were not rated for grass-legume and are shown with a zero "0".

Soils data provided by USDA and NRCS. Soils data provided by University of Illinois at Champaign-Urbana.

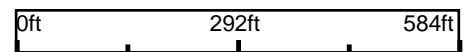
*c: Using Capabilities Class Dominant Condition Aggregation Method

Topography Map



©2016 AgriData, Inc.

map center: 38° 48' 22.83, 88° 21' 46.77



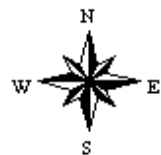
Maps Provided By:



© AgriData, Inc. 2016

www.AgriDataInc.com

12-4N-7E
Clay County
Illinois



8/13/2016