

Aerial Map



©2019 AgriData, Inc.

map center: 38° 34' 56.09, -88° 14' 44.67



Maps Provided By:  
 **surety**  
CUSTOMIZED ONLINE MAPPING  
© AgriData, Inc. 2019 [www.AgriDataInc.com](http://www.AgriDataInc.com)

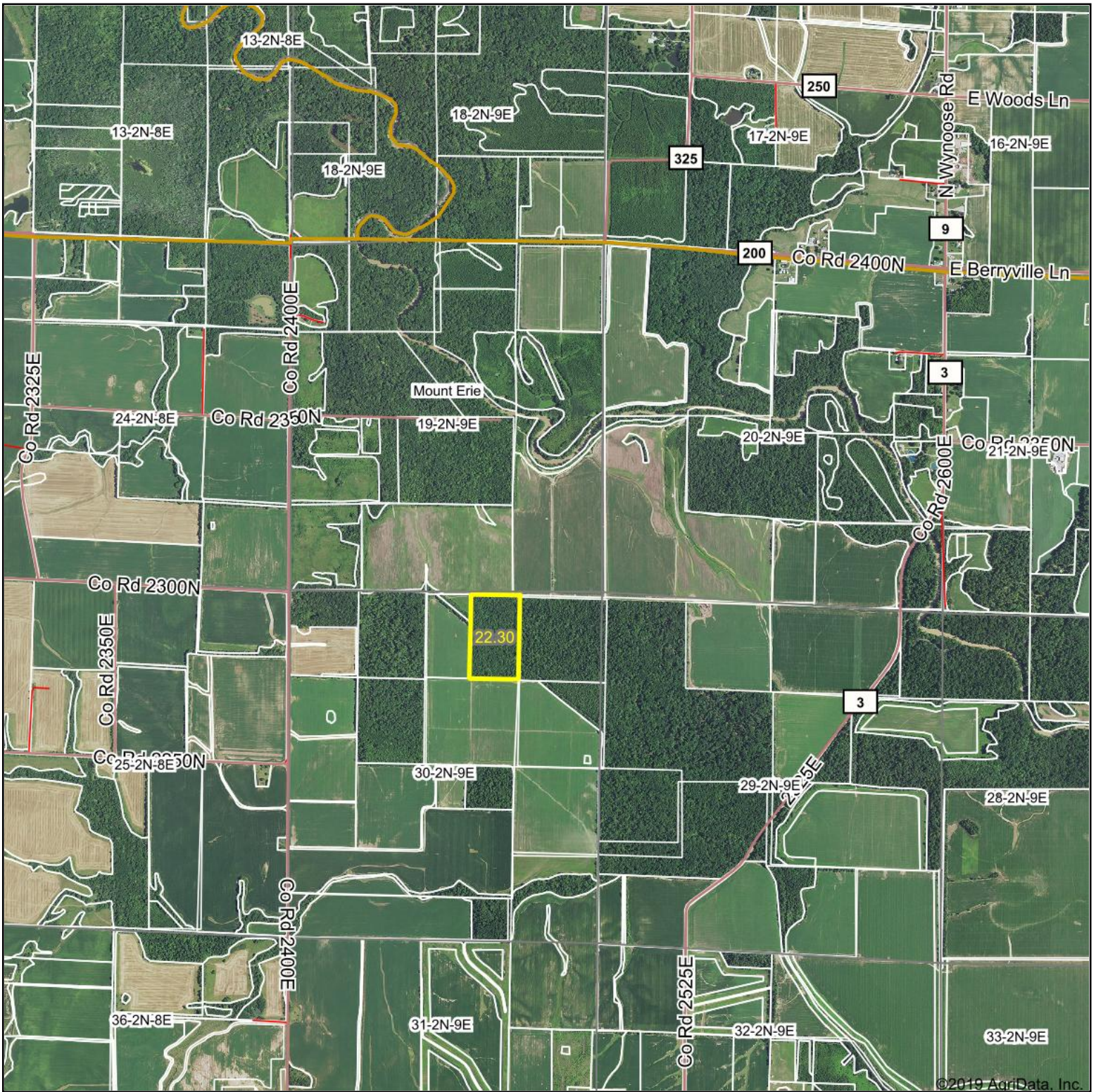
**30-2N-9E**  
**Wayne County**  
**Illinois**



2/11/2019



## Aerial Map



map center: 38° 35' 11.77, -88° 14' 36.63

0ft	2385ft	4770ft
-----	--------	--------



Maps Provided By:



© AgriData, Inc. 2019

[www.AgriDataInc.com](http://www.AgriDataInc.com)

**19-2N-9E**  
**Wayne County**  
**Illinois**

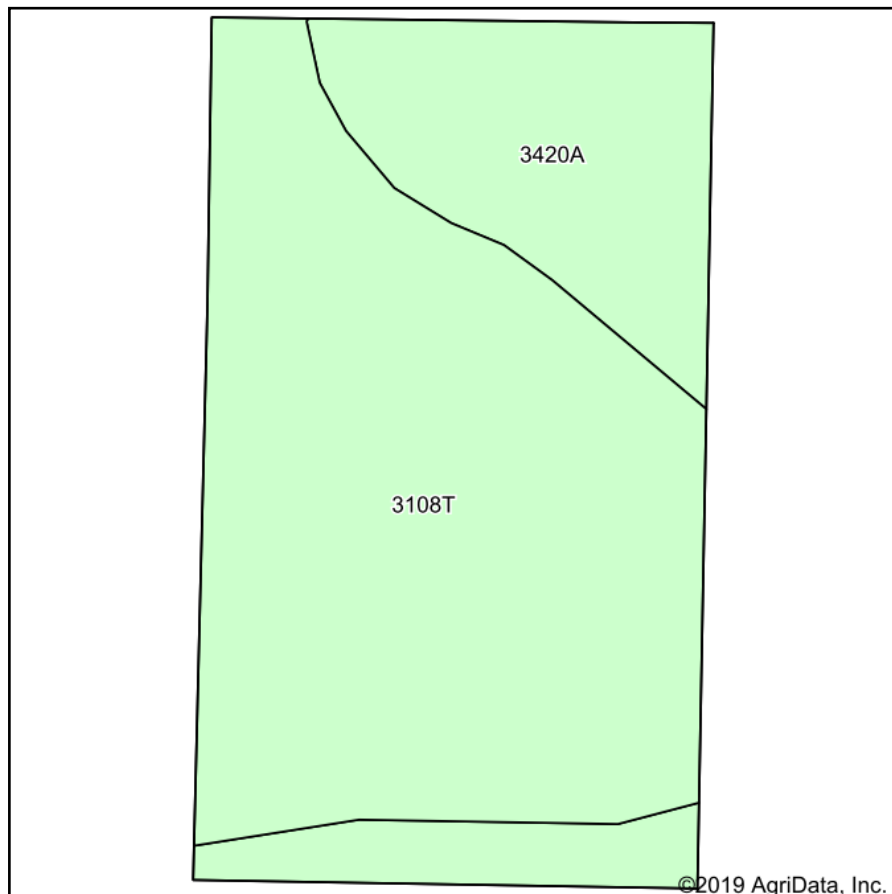


2/11/2019

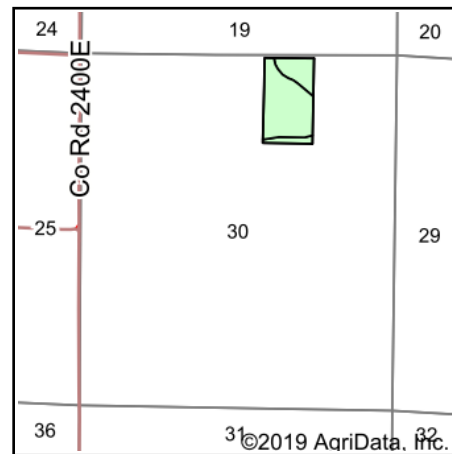
Field borders provided by Farm Service Agency as of 5/21/2008. Soils data provided by University of Illinois at Champaign-Urbana.



# Soils Map



Soils data provided by USDA and NRCS.



State: **Illinois**  
 County: **Wayne**  
 Location: **30-2N-9E**  
 Township: **Mount Erie**  
 Acres: **22.3**  
 Date: **2/11/2019**



Maps Provided By:  
  
 © AgriData, Inc. 2019 [www.AgrIDataInc.com](http://www.AgrIDataInc.com)



## Area Symbol: IL191, Soil Area Version: 16

Code	Soil Description	Acres	Percent of field	Il. State Productivity Index Legend	Corn Bu/A	Soybeans Bu/A	Wheat Bu/A	Grass-legume hay, T/A	Crop productivity index for optimum management
3108T	Bonnie silt loam, sodic, 0 to 2 percent slopes, frequently flooded	15.90	71.3%		149	49	59	4.64	111
3420A	Piopolis silty clay loam, 0 to 2 percent slopes, frequently flooded	6.40	28.7%		142	48	59	4.39	108
<b>Weighted Average</b>					<b>147</b>	<b>48.7</b>	<b>59</b>	<b>4.57</b>	<b>110.1</b>

**Table: Optimum Crop Productivity Ratings for Illinois Soil by K.R. Olson and J.M. Lang, Office of Research, ACES, University of Illinois at Champaign-Urbana.** Version: 1/2/2012 Amended Table S2 B811

Crop yields and productivity indices for optimum management (B811) are maintained at the following NRES web site: <http://soilproductivity.nres.illinois.edu/>

\*\* Indexes adjusted for slope and erosion according to Bulletin 811 Table S3

e Soils in the well drained group were not rated for grass-legume and are shown with a zero "0".

Soils data provided by USDA and NRCS. Soils data provided by University of Illinois at Champaign-Urbana.

\*c: Using Capabilities Class Dominant Condition Aggregation Method

# Topography Map



map center: 38° 34' 56.09, -88° 14' 44.67

0ft 410ft 820ft



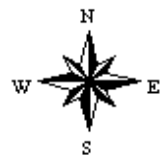
Maps Provided By:



© AgriData, Inc. 2019

www.AgriDataInc.com

**30-2N-9E**  
**Wayne County**  
**Illinois**



2/11/2019