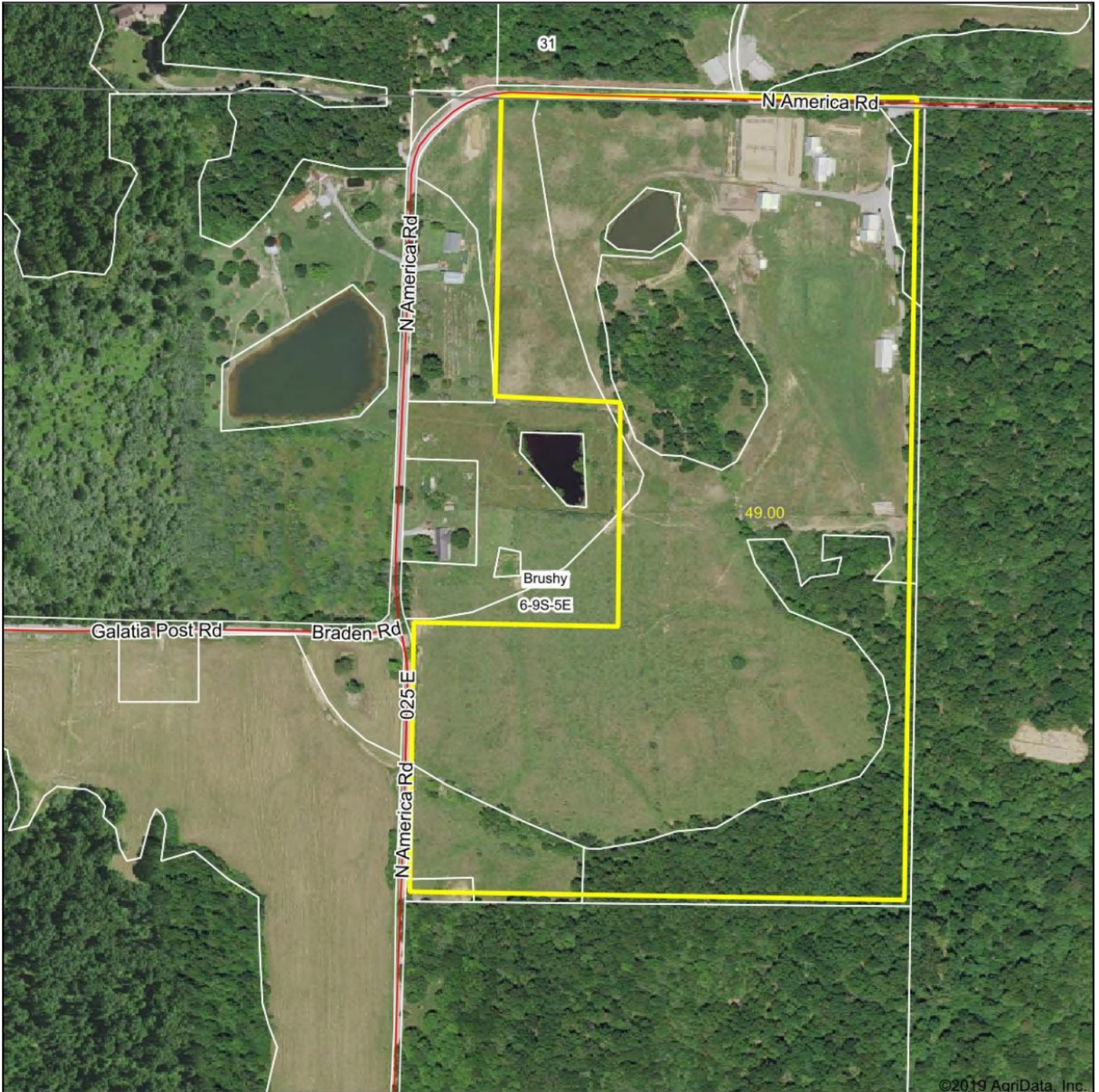


Aerial Map



map center: 37° 46' 21.55, -88° 42' 5.9

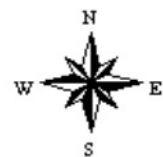


Maps Provided By:



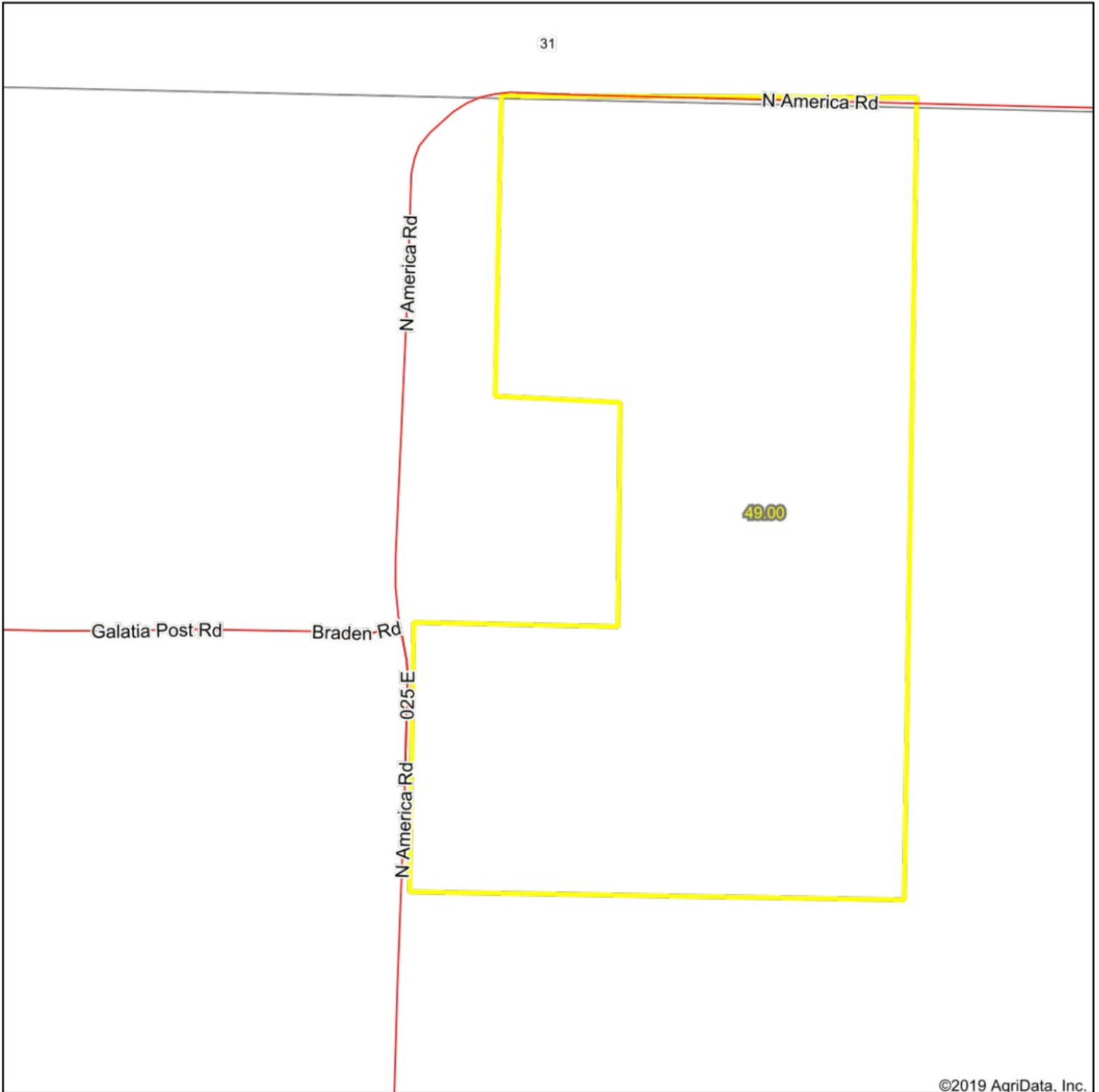
© AgriData, Inc. 2019 www.AgridataInc.com

6-9S-5E
Saline County
Illinois



2/6/2019

OverView Map



©2019 AgriData, Inc.

map center: 37° 46' 21.55, -88° 42' 5.9

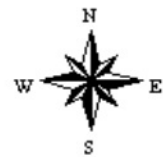


Maps Provided By:



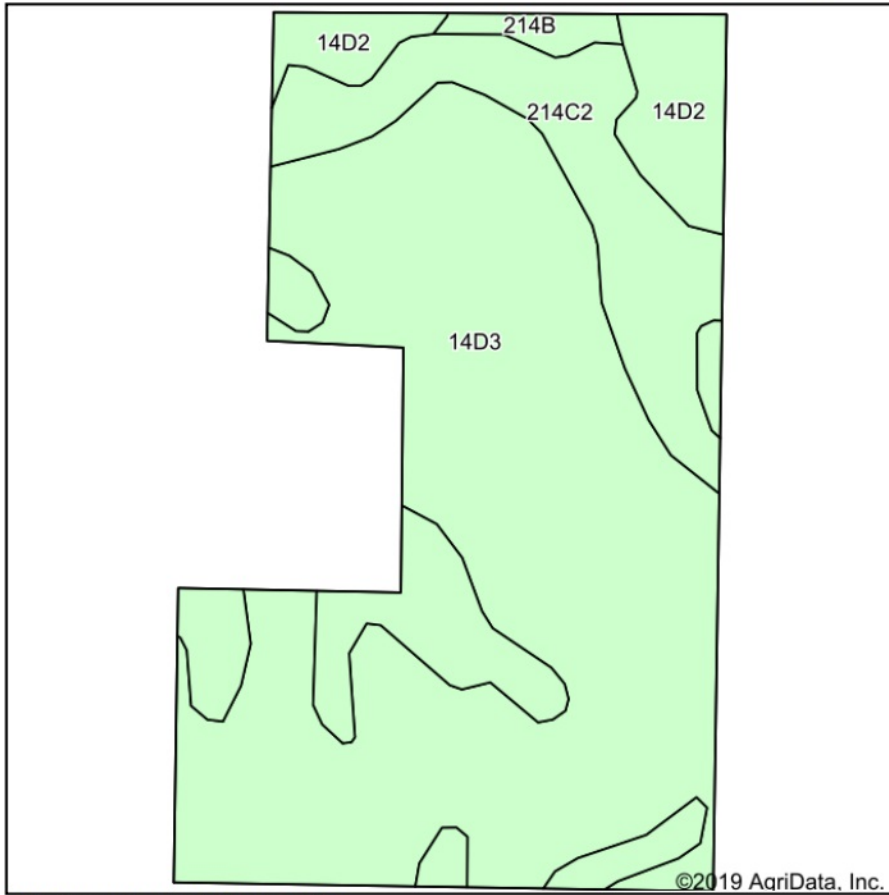
© AgriData, Inc. 2019

www.AgriDataInc.com



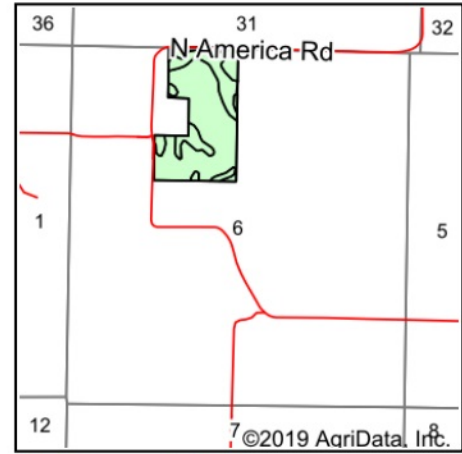
2/6/2019

Soils Map



Soils data provided by USDA and NRCS.

©2019 AgriData, Inc.



State: **Illinois**
 County: **Saline**
 Location: **6-9S-5E**
 Township: **Brushy**
 Acres: **49**
 Date: **2/6/2019**



Maps Provided By:



© AgriData, Inc. 2019

www.AgrIDataInc.com



Area Symbol: IL165, Soil Area Version: 13

| Code | Soil Description | Acres | Percent of field | Non-Irr Class *c | *n NCCPI Soybeans |
|-------------------------|--|-------|------------------|------------------|-------------------|
| 14D3 | Ava silt loam, 5 to 12 percent slopes, severely eroded | 32.38 | 66.1% | IVe | 35 |
| 214C2 | Hosmer silt loam, 5 to 10 percent slopes, eroded | 12.16 | 24.8% | IIIe | 30 |
| 14D2 | Ava silt loam, 7 to 12 percent slopes, eroded | 3.80 | 7.8% | IIIe | 50 |
| 214B | Hosmer silt loam, 2 to 5 percent slopes | 0.66 | 1.3% | IIe | 46 |
| Weighted Average | | | | | *n 35.1 |

*n: The aggregation method is "Weighted Average using major components"

*c: Using Capabilities Class Dominant Condition Aggregation Method

Soils data provided by USDA and NRCS.