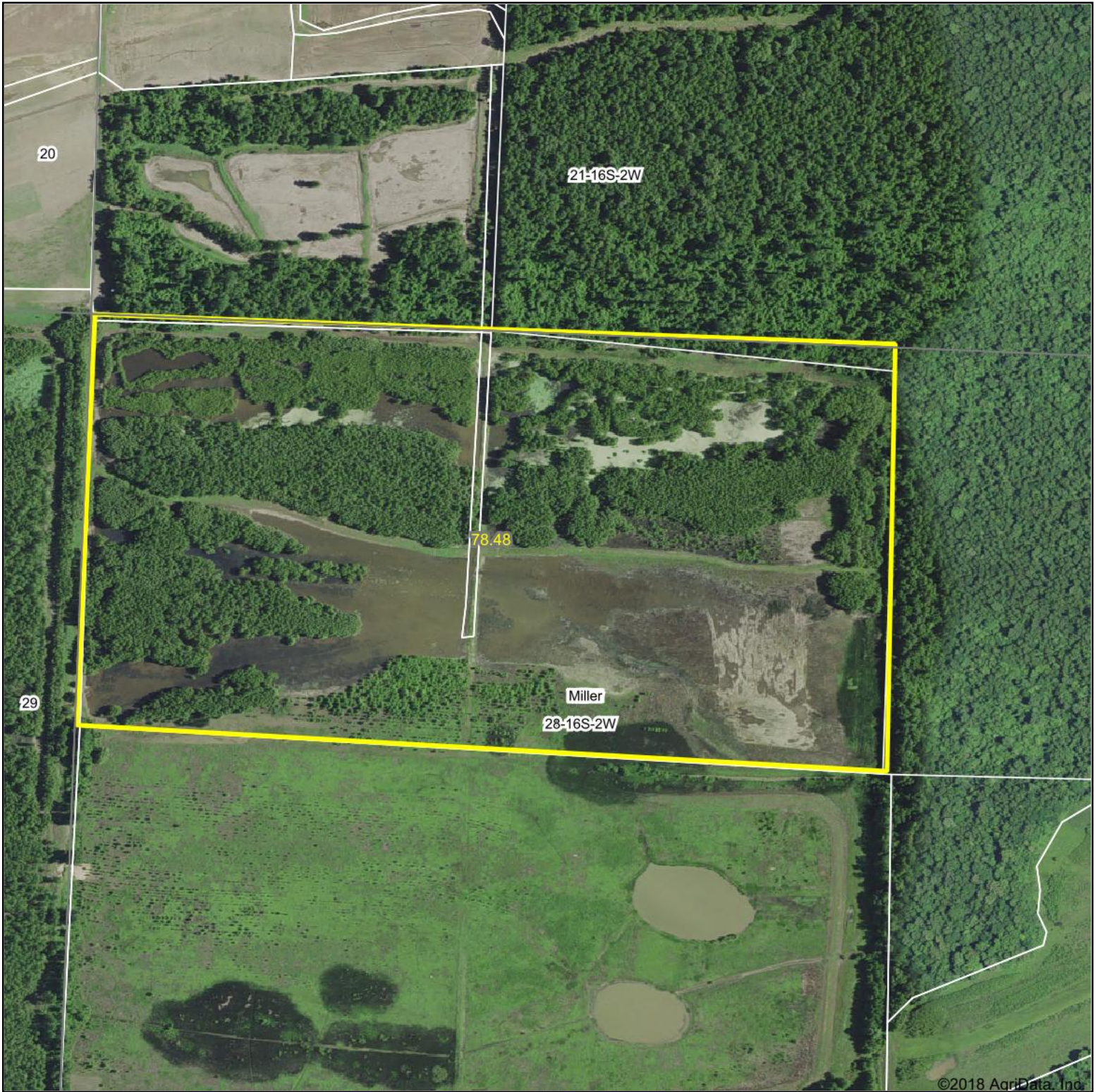


# Aerial Map



map center: 37° 5' 57.02, -89° 20' 17.98

0ft 495ft 991ft



Maps Provided By:

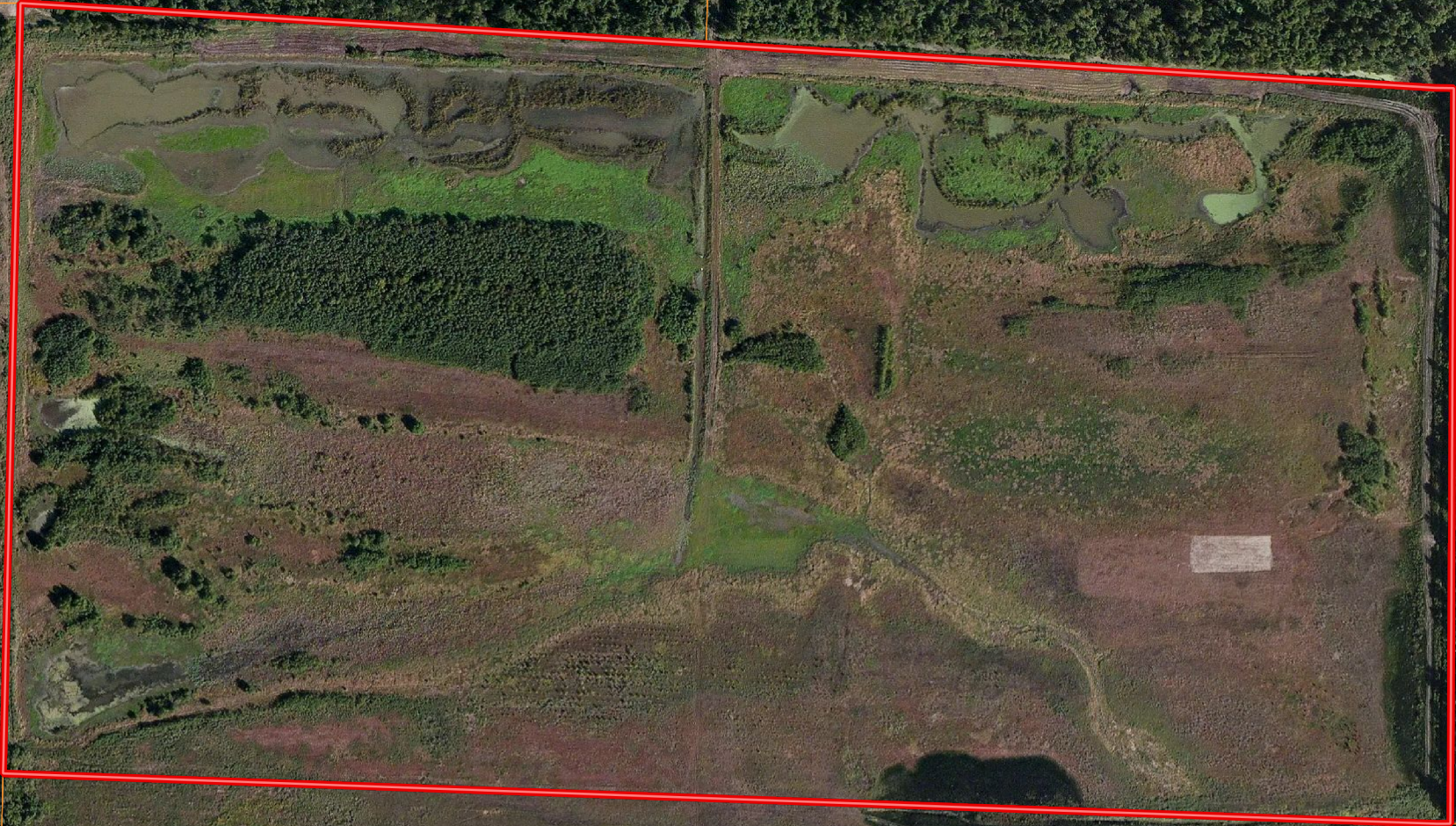


**28-16S-2W**  
**Alexander County**  
**Illinois**



12/7/2018



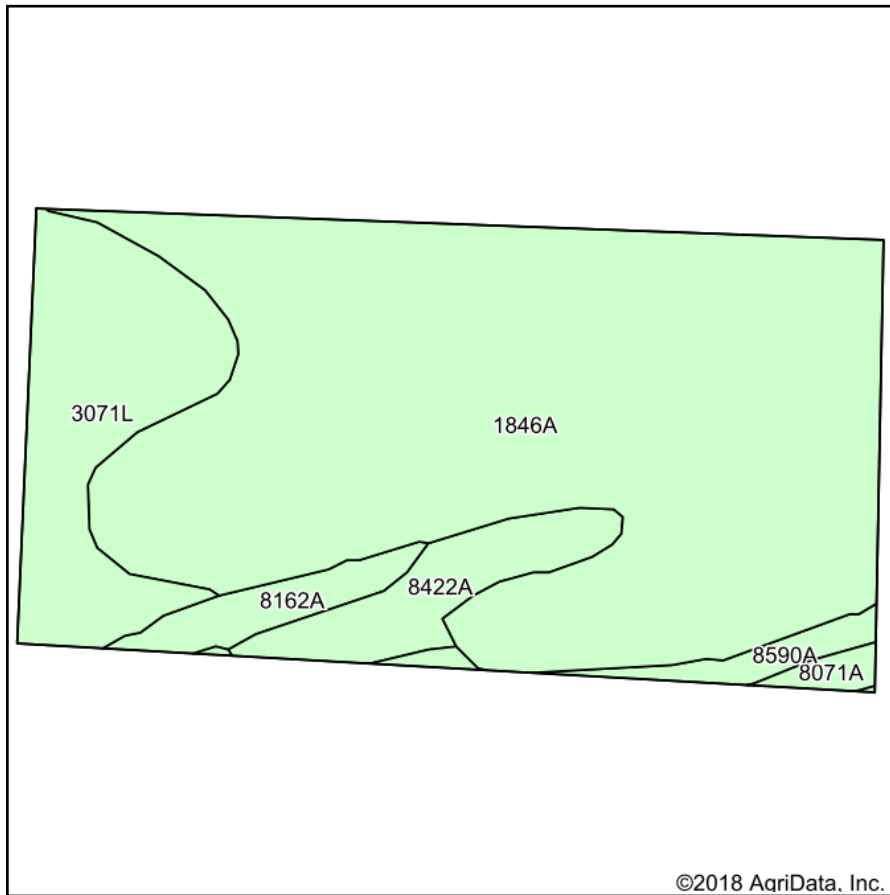


Boundary

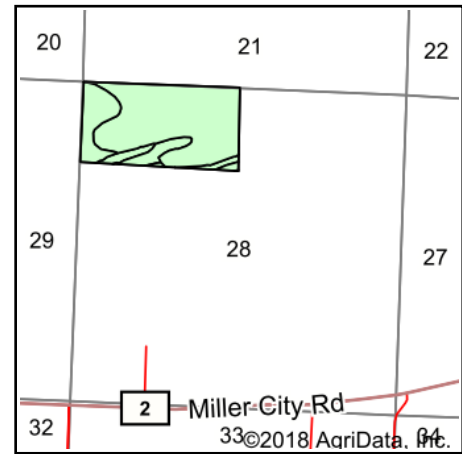




# Soils Map



Soils data provided by USDA and NRCS.



State: **Illinois**  
 County: **Alexander**  
 Location: **28-16S-2W**  
 Township: **Miller**  
 Acres: **78.48**  
 Date: **12/7/2018**



Maps Provided By:



© AgriData, Inc. 2018

www.AgriDataInc.com



## Area Symbol: IL003, Soil Area Version: 15

Code	Soil Description	Acres	Percent of field	Il. State Productivity Index Legend	Corn Bu/A	Soybeans Bu/A	Wheat Bu/A	Crop productivity index for optimum management
1846A	Karnak and Cape silty clays, undrained, 0 to 2 percent slopes, frequently flooded	57.18	72.9%		134	46	56	103
3071L	Darwin silty clay, 0 to 2 percent slopes, frequently flooded, long duration	11.69	14.9%		149	50	60	111
8422A	Cape silty clay loam, 0 to 2 percent slopes, occasionally flooded	4.63	5.9%		136	46	58	103
8162A	Gorham silty clay loam, 0 to 2 percent slopes, occasionally flooded	2.48	3.2%		175	57	68	130
8590A	Cairo silty clay, 0 to 2 percent slopes, occasionally flooded	1.81	2.3%		159	53	61	119
8071A	Darwin silty clay, 0 to 2 percent slopes, occasionally flooded	0.69	0.9%		149	50	60	111
Weighted Average					138.4	47.1	57.2	105.5

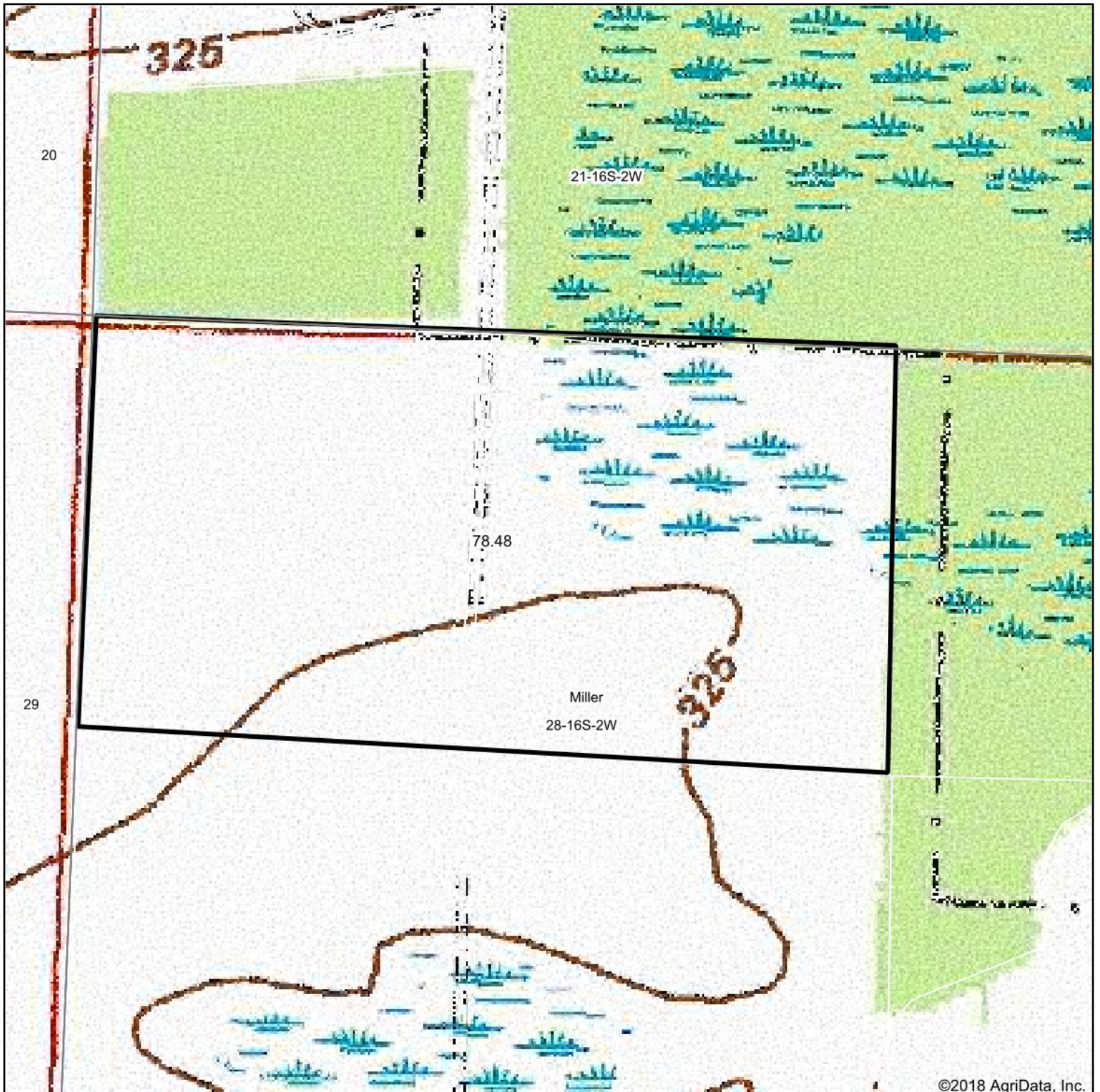
**Table: Optimum Crop Productivity Ratings for Illinois Soil by K.R. Olson and J.M. Lang, Office of Research, ACES, University of Illinois at Champaign-Urbana.** Version: 1/2/2012 Amended Table S2 B811

Crop yields and productivity indices for optimum management (B811) are maintained at the following NRES web site: <http://soilproductivity.nres.illinois.edu/>

\*\* Indexes adjusted for slope and erosion according to Bulletin 811 Table S3

Soils data provided by USDA and NRCS. Soils data provided by University of Illinois at Champaign-Urbana.

# Topography Map



©2018 AgriData, Inc.

map center: 37° 5' 57.02, -89° 20' 17.98

0ft 495ft 991ft



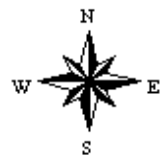
Maps Provided By:



© AgriData, Inc. 2018

www.AgriDataInc.com

**28-16S-2W**  
**Alexander County**  
**Illinois**



12/7/2018