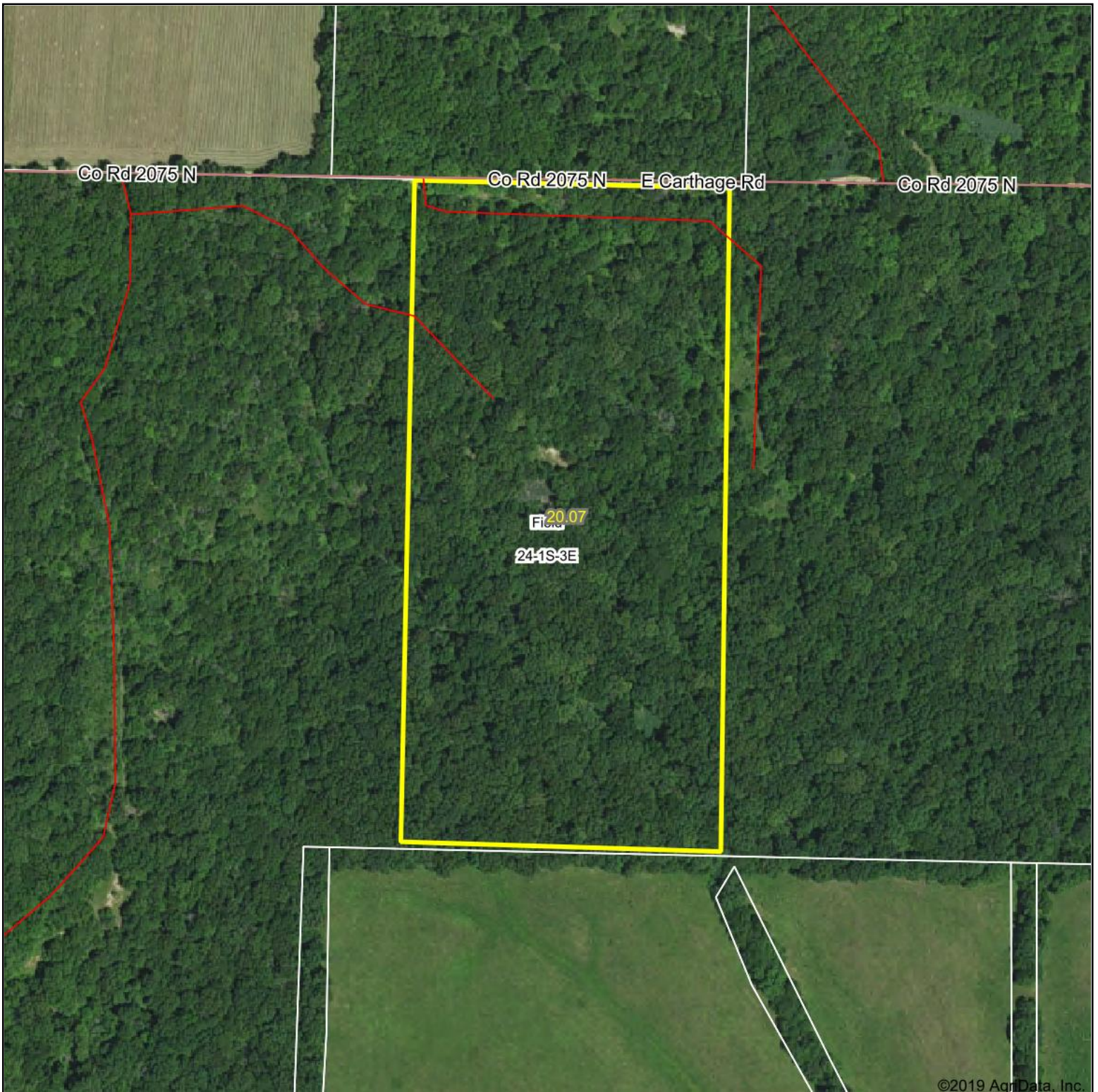


# Aerial Map



©2019 AgriData, Inc.

map center: 38° 25' 36.49, -88° 49' 8.7

0ft 318ft 636ft



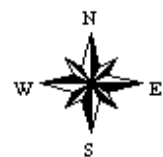
Maps Provided By:



© AgriData, Inc. 2019

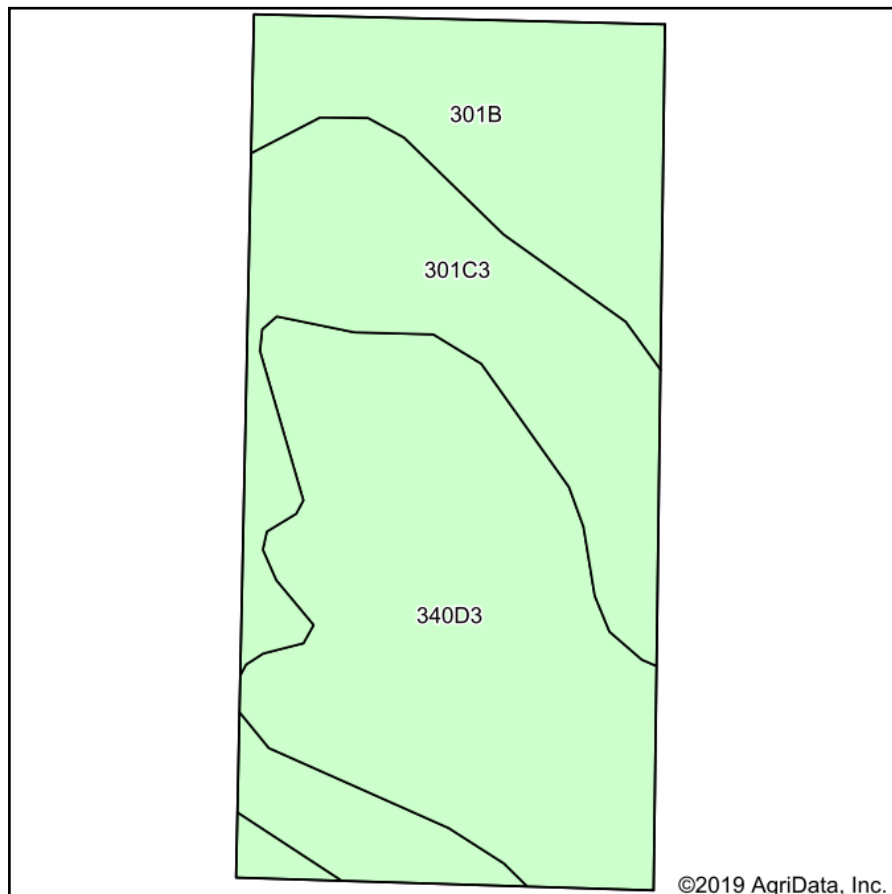
www.AgrIDataInc.com

**24-1S-3E**  
**Jefferson County**  
**Illinois**

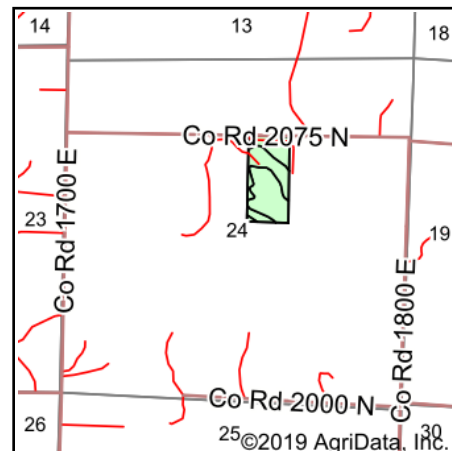


1/18/2019

# Soils Map



Soils data provided by USDA and NRCS.



State: **Illinois**  
 County: **Jefferson**  
 Location: **24-1S-3E**  
 Township: **Field**  
 Acres: **20.07**  
 Date: **1/18/2019**



## Area Symbol: IL081, Soil Area Version: 11

Code	Soil Description	Acres	Percent of field	Il. State Productivity Index Legend	Corn Bu/A	Soybeans Bu/A	Wheat Bu/A	Grass-legume hay, T/A	Crop productivity index for optimum management
**340D3	Zanesville silt loam, till plain, 10 to 18 percent slopes, severely eroded	9.13	45.5%		**86	**30	**37	**2.68	**65
**301C3	Grantsburg silty clay loam, 5 to 10 percent slopes, severely eroded	5.49	27.4%		**99	**34	**41	0.00	**75
**301B	Grantsburg silt loam, 2 to 5 percent slopes	5.45	27.2%		**133	**46	**54	0.00	**101
<b>Weighted Average</b>					<b>102.3</b>	<b>35.4</b>	<b>42.7</b>	<b>1.22</b>	<b>77.5</b>

**Table: Optimum Crop Productivity Ratings for Illinois Soil by K.R. Olson and J.M. Lang, Office of Research, ACES, University of Illinois at Champaign-Urbana.** Version: 1/2/2012 Amended Table S2 B811

Crop yields and productivity indices for optimum management (B811) are maintained at the following NRES web site: <http://soilproductivity.nres.illinois.edu/>

\*\* Indexes adjusted for slope and erosion according to Bulletin 811 Table S3

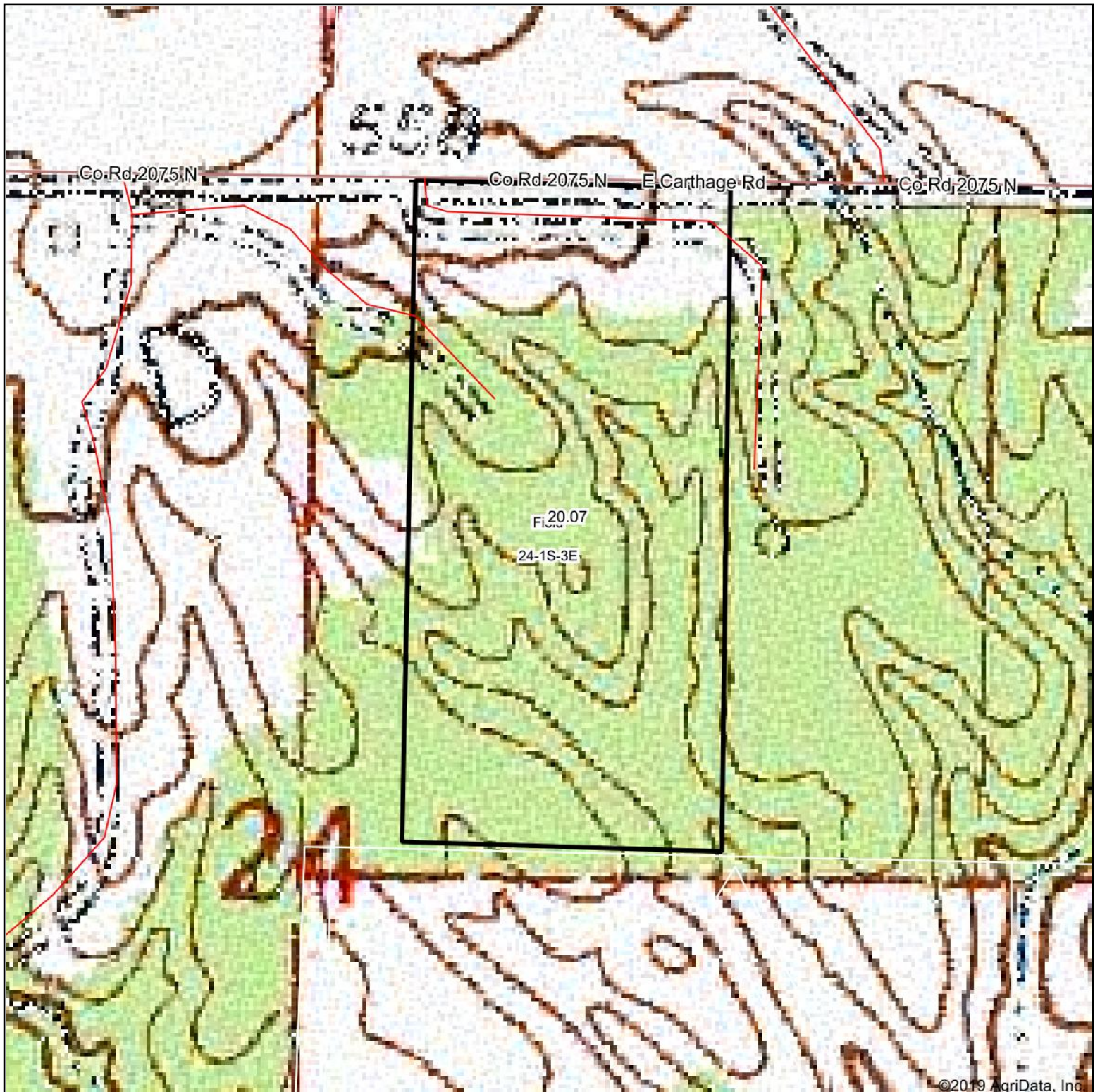
e Soils in the well drained group were not rated for grass-legume and are shown with a zero "0".

Soils data provided by USDA and NRCS. Soils data provided by University of Illinois at Champaign-Urbana.

\*c: Using Capabilities Class Dominant Condition Aggregation Method



# Topography Map



©2019 AgriData, Inc.

map center: 38° 25' 36.49, -88° 49' 8.7

0ft 318ft 636ft



Maps Provided By:



© AgriData, Inc. 2019

www.AgriDataInc.com

**24-1S-3E**  
**Jefferson County**  
**Illinois**



1/18/2019