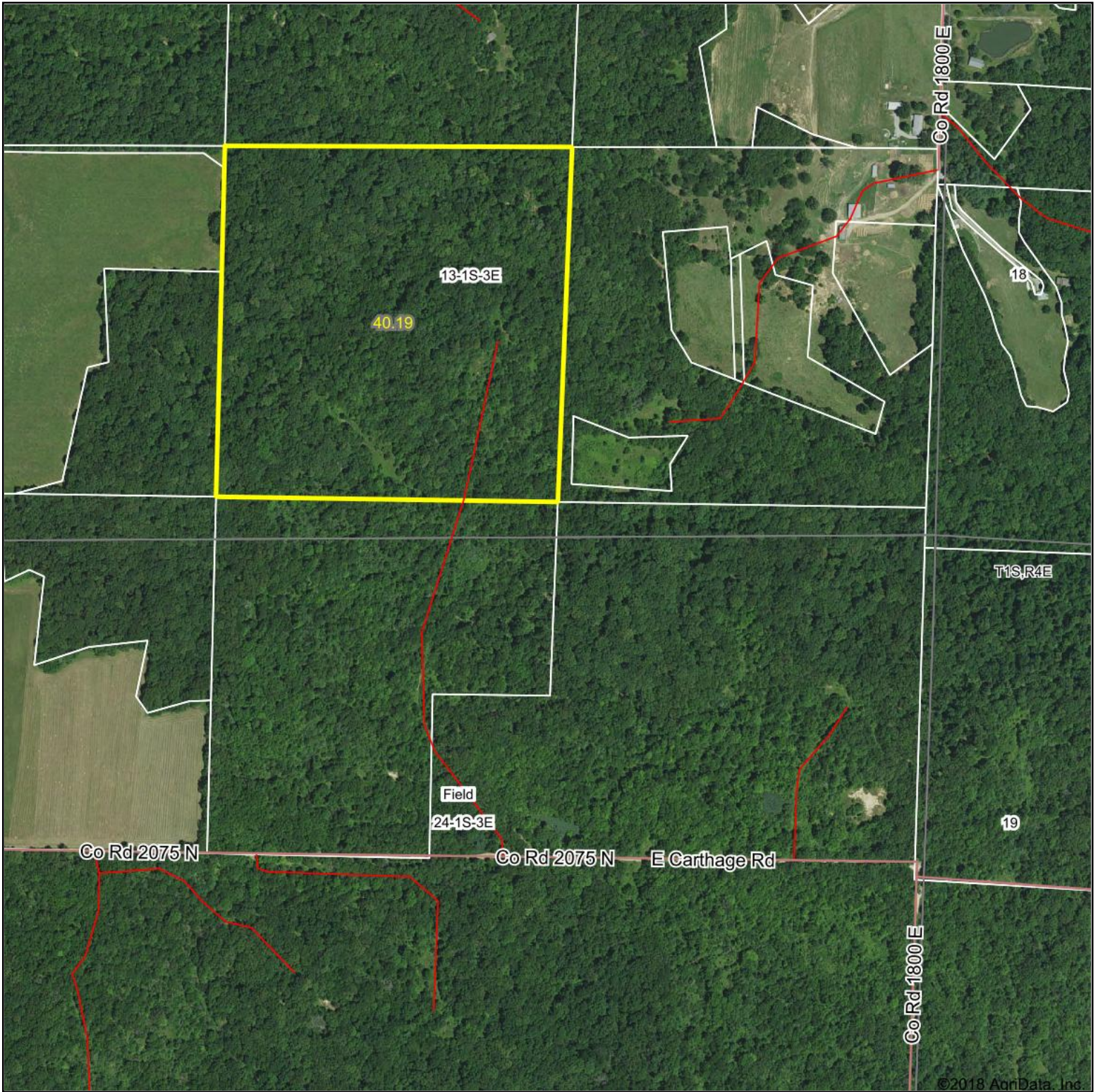
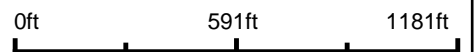


Aerial Map



©2018 AgriData, Inc.

map center: 38° 25' 55.62, -88° 48' 58.49



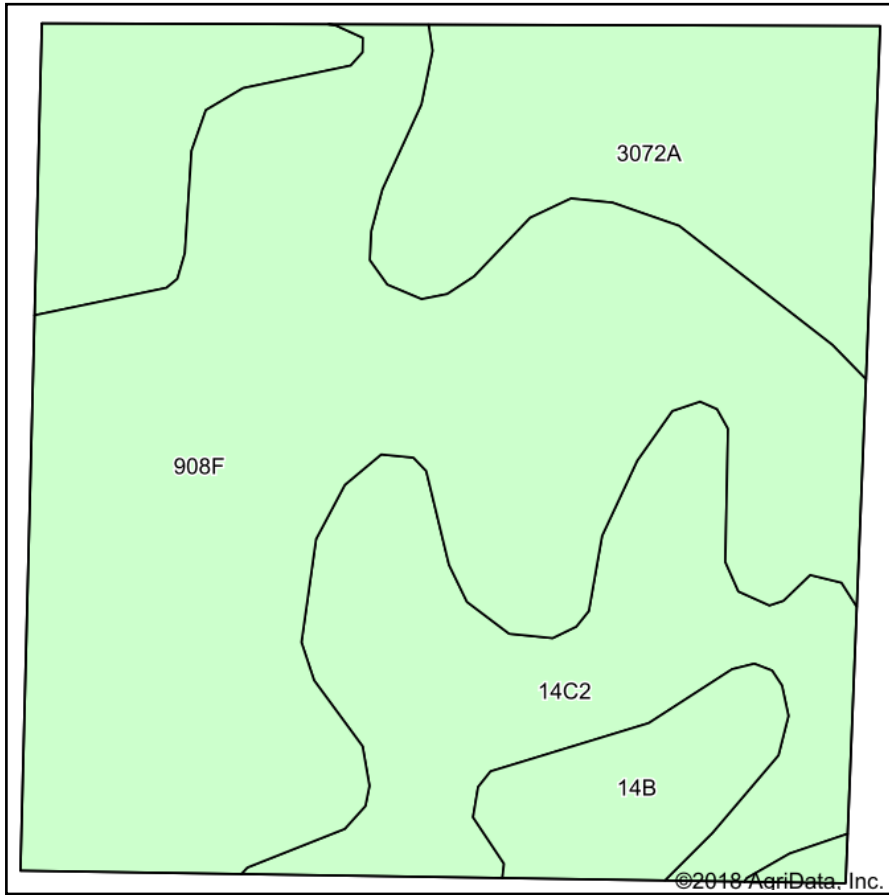
24-1S-3E
Jefferson County
Illinois



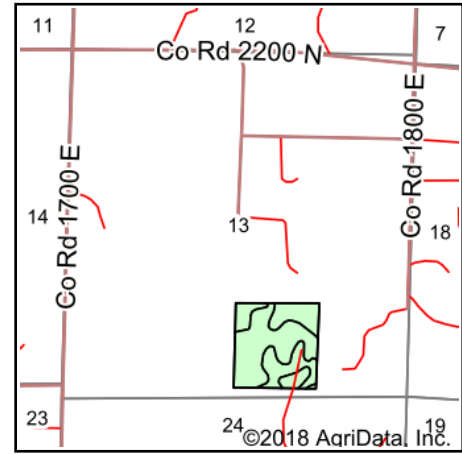
Maps Provided By:
surety
CUSTOMIZED ONLINE MAPPING
© AgriData, Inc. 2018 www.AgrIDataInc.com

7/25/2018

Soils Map



Soils data provided by USDA and NRCS.



State: **Illinois**
 County: **Jefferson**
 Location: **24-1S-3E**
 Township: **Field**
 Acres: **40.19**
 Date: **7/25/2018**



Maps Provided By:



Area Symbol: IL081, Soil Area Version: 10

Code	Soil Description	Acres	Percent of field	Il. State Productivity Index Legend	Corn Bu/A	Soybeans Bu/A	Wheat Bu/A	Grass-legume e hay, T/A	Crop productivity index for optimum management
**908F	Hickory-Kell silt loams, 18 to 35 percent slopes	20.78	51.7%		**87	**29	**34	**2.81	**67
**14C2	Ava silt loam, 5 to 10 percent slopes, eroded	10.72	26.7%		**122	**40	**50	0.00	**90
3072A	Sharon silt loam, 0 to 2 percent slopes, frequently flooded	6.42	16.0%		164	53	63	0.00	122
**14B	Ava silt loam, 2 to 5 percent slopes	2.27	5.6%		**134	**44	**54	0.00	**99
Weighted Average					111.3	36.6	44	1.45	83.7

Table: Optimum Crop Productivity Ratings for Illinois Soil by K.R. Olson and J.M. Lang, Office of Research, ACES, University of Illinois at Champaign-Urbana. Version: 1/2/2012 Amended Table S2 B811

Crop yields and productivity indices for optimum management (B811) are maintained at the following NRES web site: <http://soilproductivity.nres.illinois.edu/>

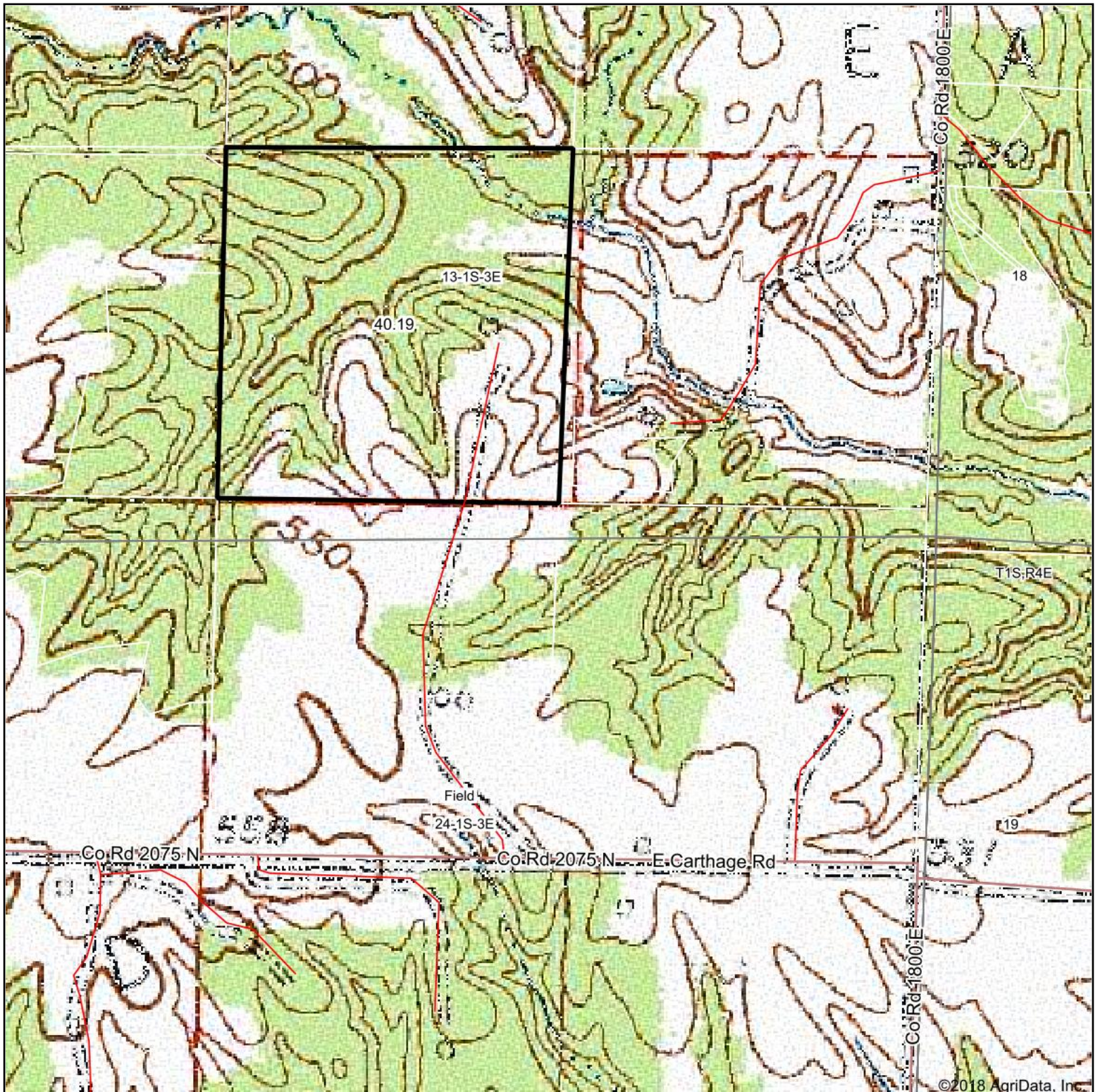
** Indexes adjusted for slope and erosion according to Bulletin 811 Table S3

e Soils in the well drained group were not rated for grass-legume and are shown with a zero "0".

Soils data provided by USDA and NRCS. Soils data provided by University of Illinois at Champaign-Urbana.

*c: Using Capabilities Class Dominant Condition Aggregation Method

Topography Map



map center: 38° 25' 55.62, -88° 48' 58.49

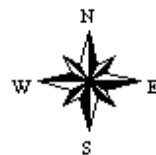
0ft 591ft 1181ft



Maps Provided By:



24-1S-3E
Jefferson County
Illinois



7/25/2018