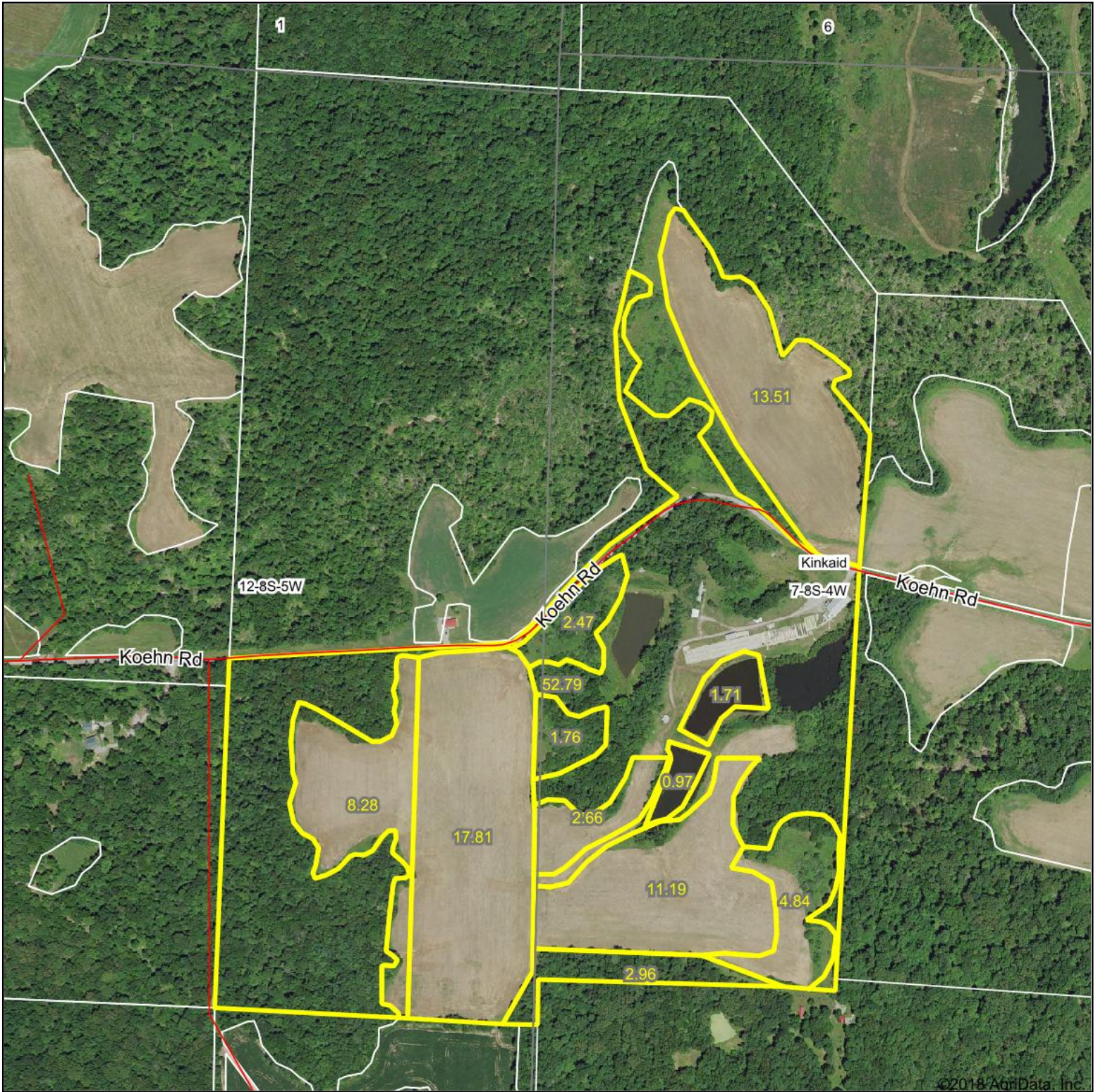


Aerial Map



©2018 AgriData, Inc.

map center: 37° 50' 53.38, -89° 35' 53.5

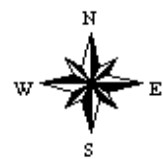


Maps Provided By:



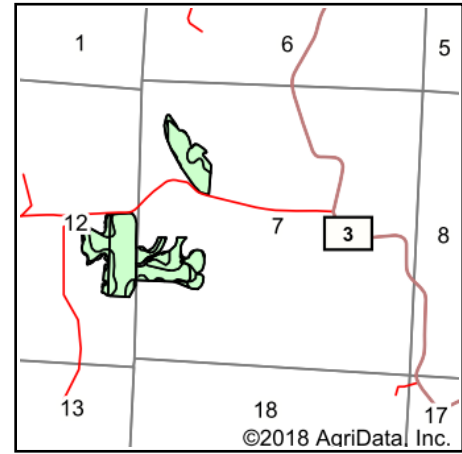
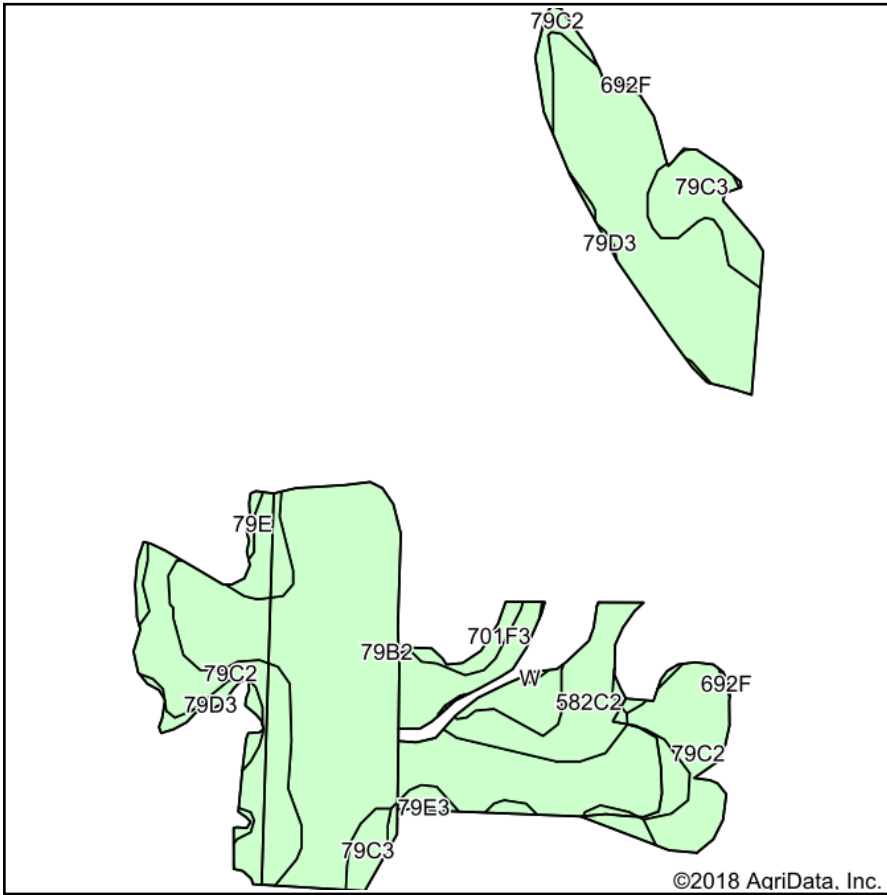
© AgriData, Inc. 2018 www.AgriDataInc.com

7-8S-4W
Jackson County
Illinois



9/26/2018

Soils Map



State: **Illinois**
 County: **Jackson**
 Location: **7-8S-4W**
 Township: **Kinkaid**
 Acres: **58.29**
 Date: **9/26/2018**



Area Symbol: IL077, Soil Area Version: 17

Code	Soil Description	Acres	Percent of field	Il. State Productivity Index Legend	Corn Bu/A	Soybeans Bu/A	Wheat Bu/A	Crop productivity index for optimum management
**79B2	Menfro silt loam, 2 to 5 percent slopes, eroded	35.30	60.6%		**157	**48	**60	**114
**79C2	Menfro silt loam, 5 to 10 percent slopes, eroded	11.37	19.5%		**153	**47	**59	**112
**582C2	Homen silt loam, 5 to 10 percent slopes, eroded	3.71	6.4%		**140	**44	**52	**101
**79C3	Menfro silt loam, 5 to 10 percent slopes, severely eroded	3.35	5.7%		**142	**44	**54	**103
**582D3	Homen silty clay loam, 10 to 18 percent slopes, severely eroded	1.45	2.5%		**122	**38	**45	**88
**79D3	Menfro silt loam, 10 to 18 percent slopes, severely eroded	1.09	1.9%		**134	**41	**51	**97
**79E3	Menfro silt loam, 18 to 25 percent slopes, severely eroded	1.07	1.8%		**112	**35	**43	**82
**701F3	Hickory-Menfro complex, 18 to 35 percent slopes, severely eroded	0.65	1.1%		**87	**28	**34	**65
**79E	Menfro silt loam, 18 to 25 percent slopes	0.17	0.3%		**132	**41	**50	**96
**692F	Menfro-Wellston silt loams, 18 to 35 percent slopes	0.07	0.1%		**104	**33	**40	**76
W	Water	0.06	0.1%					
Weighted Average					151.1	46.4	57.7	109.8

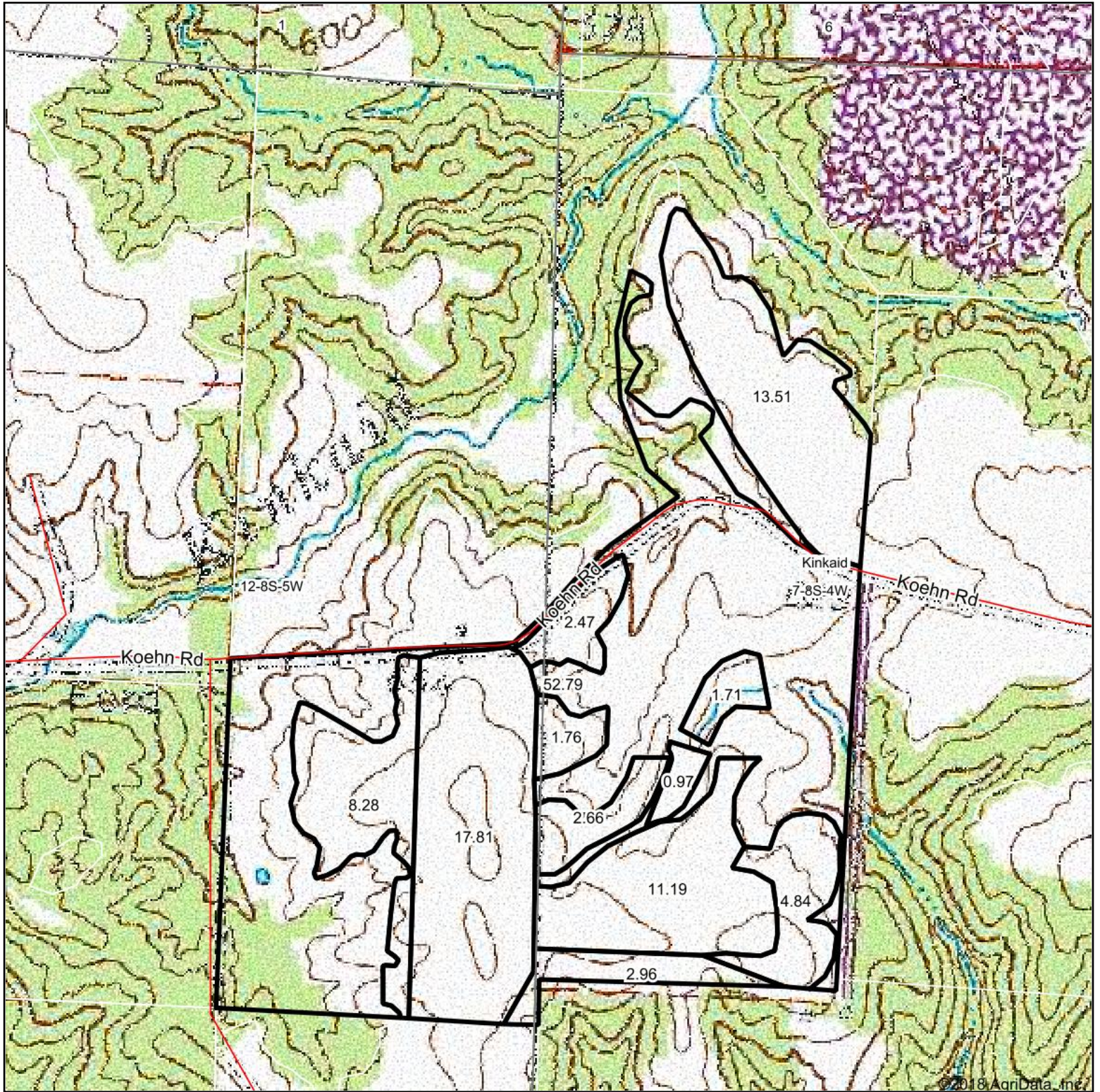
Table: Optimum Crop Productivity Ratings for Illinois Soil by K.R. Olson and J.M. Lang, Office of Research, ACES, University of Illinois at Champaign-Urbana. Version: 1/2/2012 Amended Table S2 B811

Crop yields and productivity indices for optimum management (B811) are maintained at the following NRES web site: <http://soilproductivity.nres.illinois.edu/>

** Indexes adjusted for slope and erosion according to Bulletin 811 Table S3

Soils data provided by USDA and NRCS. Soils data provided by University of Illinois at Champaign-Urbana.

Topography Map



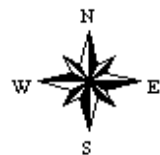
©2018 AgriData, Inc.

map center: 37° 50' 53.38, -89° 35' 53.5

0ft 656ft 1312ft



7-8S-4W
Jackson County
Illinois



9/26/2018