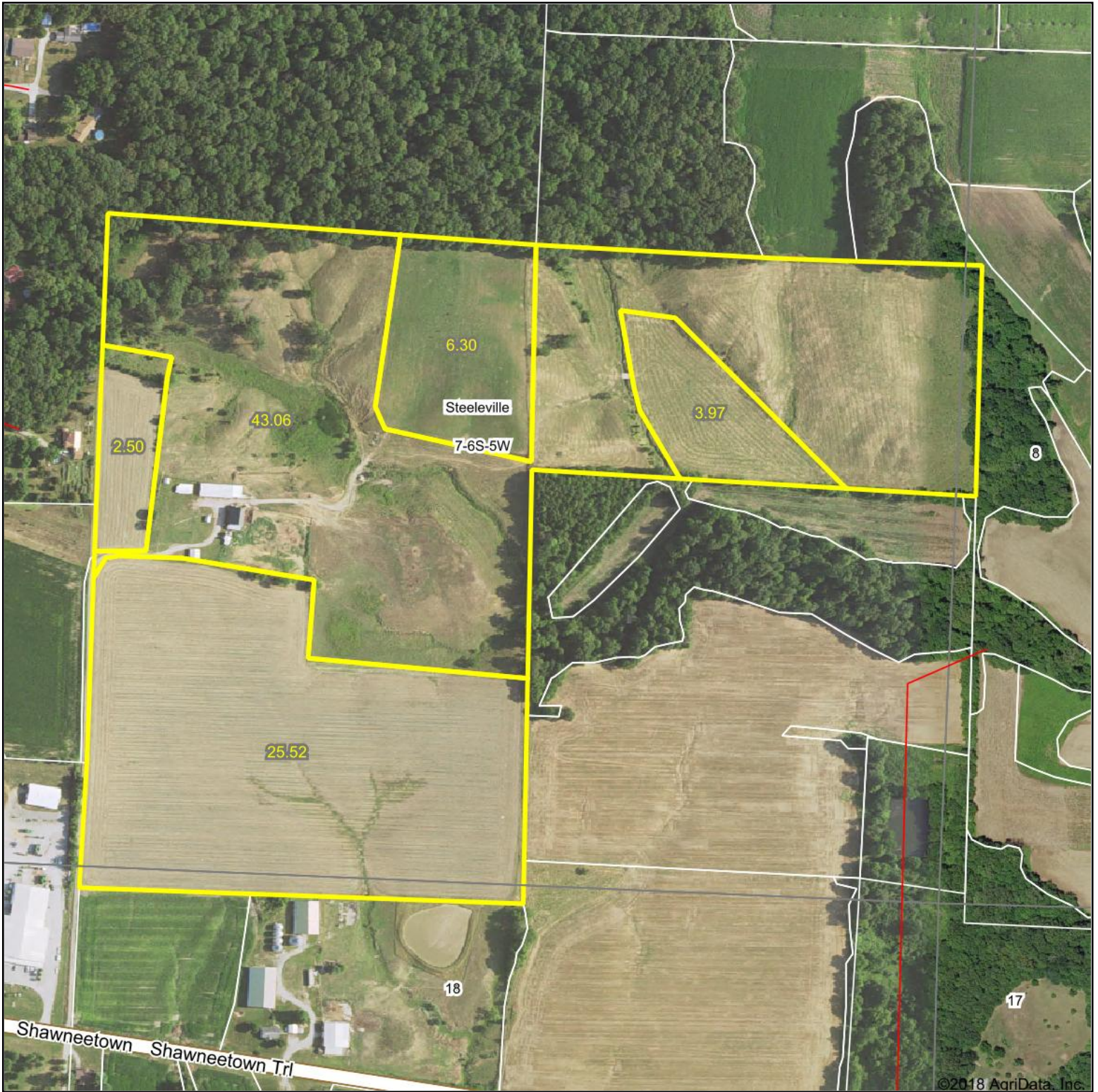
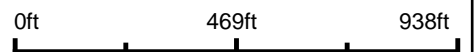


Aerial Map



map center: 38° 1' 2.78, -89° 41' 26.11



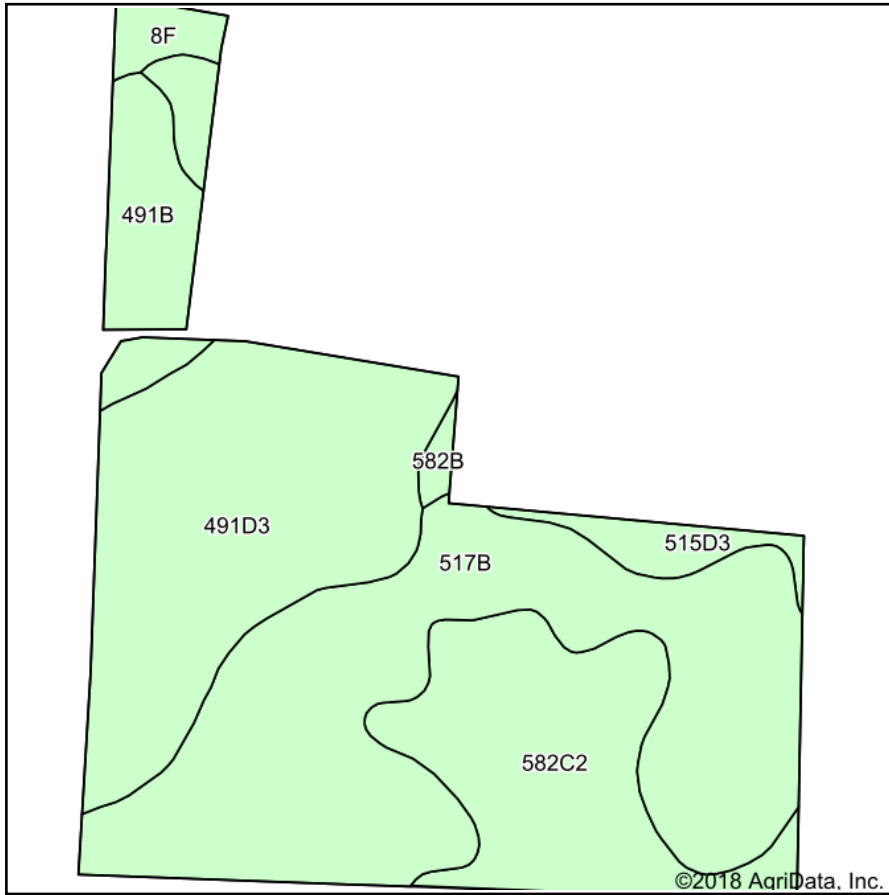
7-6S-5W
Randolph County
Illinois



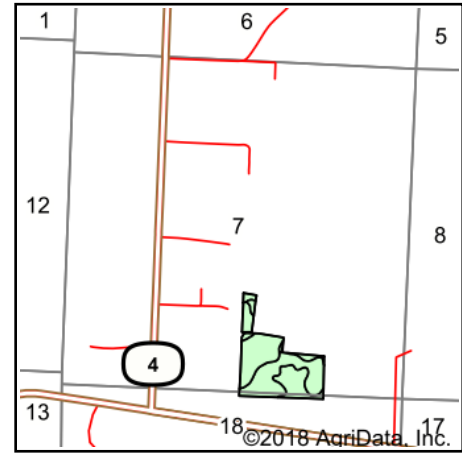
Maps Provided By:
surety
CUSTOMIZED ONLINE MAPPING
© AgriData, Inc. 2018 www.AgriDataInc.com

9/15/2018

Soils Map



Soils data provided by USDA and NRCS.



State: **Illinois**
 County: **Randolph**
 Location: **7-6S-5W**
 Township: **Steeleville**
 Acres: **28.02**
 Date: **9/15/2018**



Maps Provided By:



Area Symbol: IL157, Soil Area Version: 11

Code	Soil Description	Acres	Percent of field	Il. State Productivity Index Legend	Corn Bu/A	Soybeans Bu/A	Wheat Bu/A	Crop productivity index for optimum management
**517B	Marine silt loam, 2 to 5 percent slopes	11.18	39.9%		**143	**45	**55	**103
**491D3	Ruma silty clay loam, 10 to 18 percent slopes, severely eroded	8.35	29.8%		**131	**39	**49	**94
**582C2	Homen silt loam, 5 to 10 percent slopes, eroded	5.17	18.5%		**140	**44	**52	**101
**491B	Ruma silt loam, 2 to 5 percent slopes	1.90	6.8%		**160	**48	**59	**115
**515D3	Bunkum silty clay loam, 10 to 18 percent slopes, severely eroded	0.73	2.6%		**118	**41	**45	**89
**8F	Hickory silt loam, 18 to 35 percent slopes	0.50	1.8%		**86	**29	**35	**65
**582B	Homen silt loam, 2 to 5 percent slopes	0.19	0.7%		**149	**47	**55	**108
Weighted Average					138.4	42.9	52.3	99.8

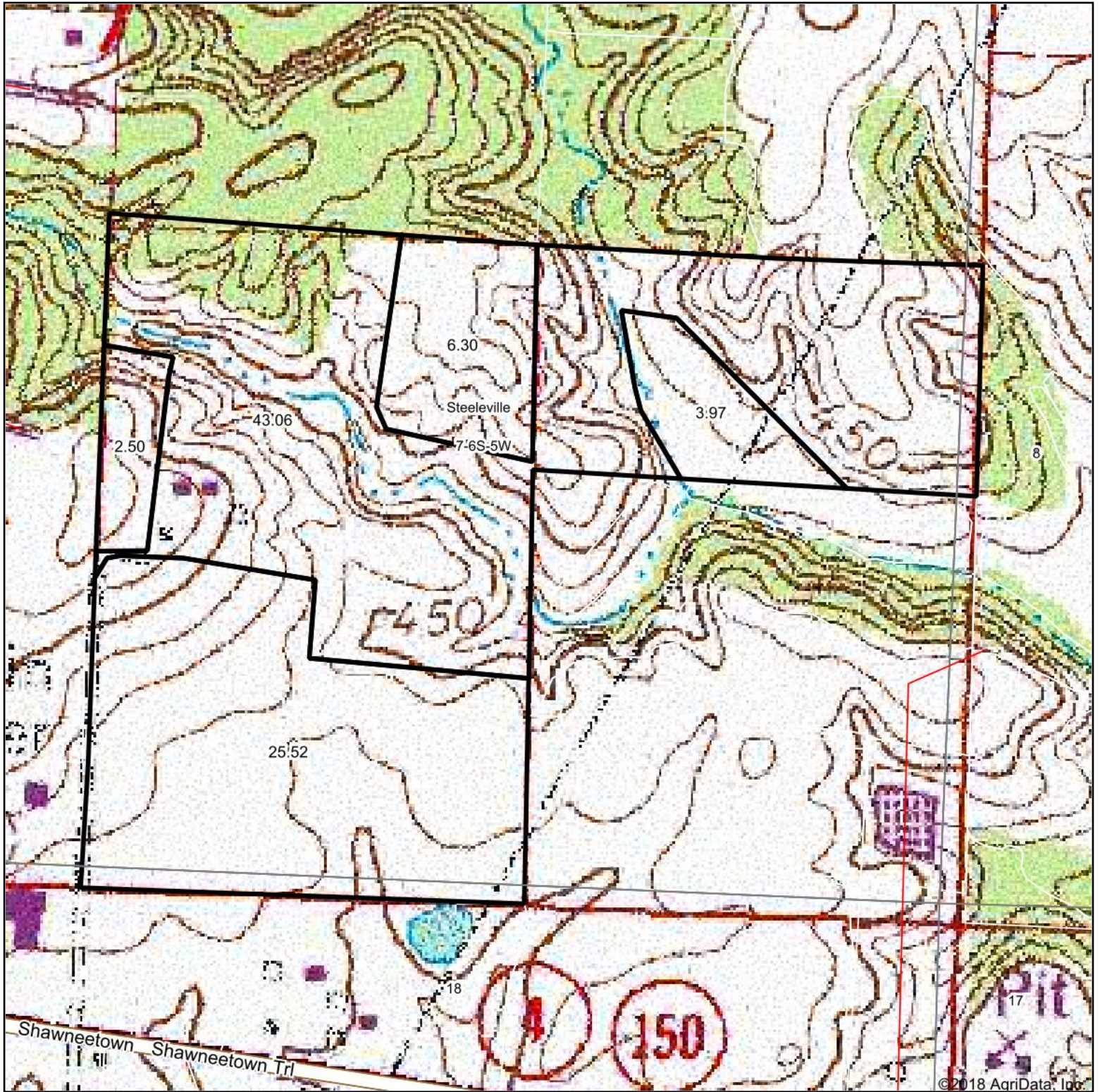
Table: Optimum Crop Productivity Ratings for Illinois Soil by K.R. Olson and J.M. Lang, Office of Research, ACES, University of Illinois at Champaign-Urbana. Version: 1/2/2012 Amended Table S2 B811

Crop yields and productivity indices for optimum management (B811) are maintained at the following NRES web site: <http://soilproductivity.nres.illinois.edu/>

** Indexes adjusted for slope and erosion according to Bulletin 811 Table S3

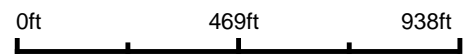
Soils data provided by USDA and NRCS. Soils data provided by University of Illinois at Champaign-Urbana.

Topography Map

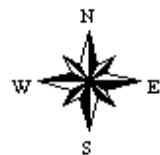


©2018 AgriData, Inc.

map center: 38° 1' 2.78, -89° 41' 26.11



7-6S-5W
Randolph County
Illinois



9/15/2018