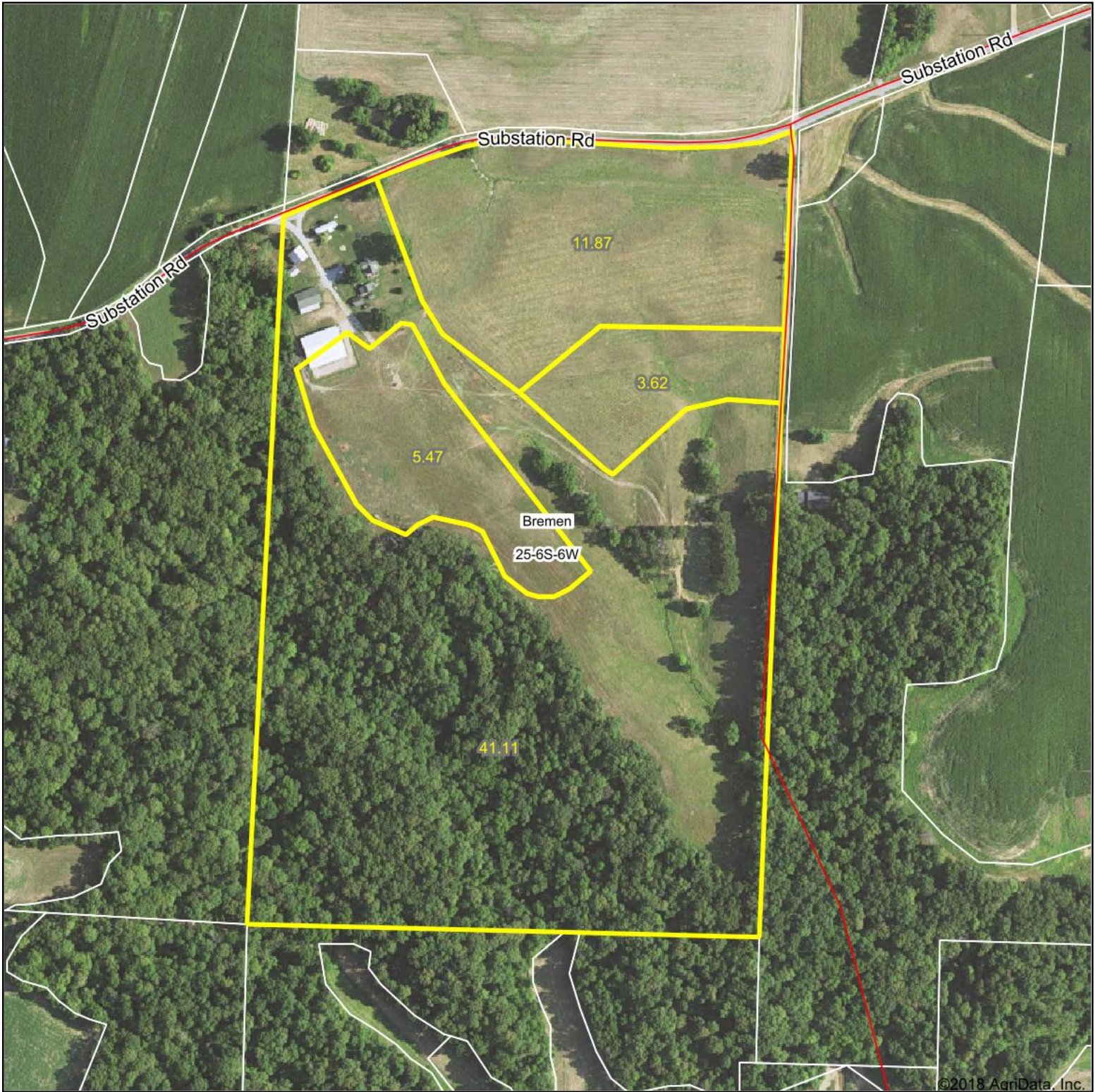


Aerial Map



©2018 AgriData, Inc.

map center: 37° 58' 39.02, -89° 42' 42.84



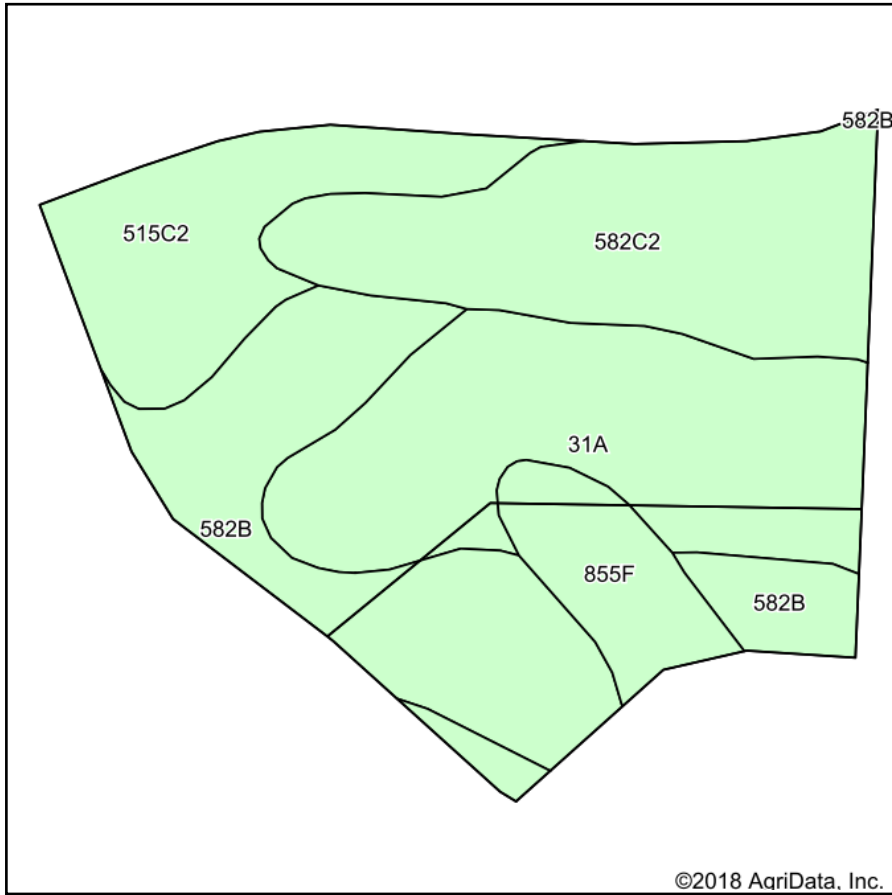
25-6S-6W
Randolph County
Illinois



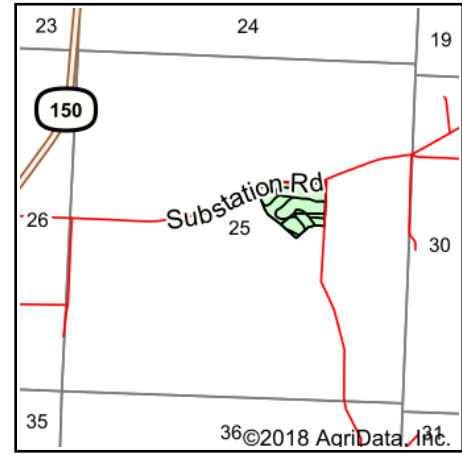
Maps Provided By:
surety
CUSTOMIZED ONLINE MAPPING
© AgriData, Inc. 2018 www.AgriDataInc.com

9/15/2018

Soils Map



Soils data provided by USDA and NRCS.



State: **Illinois**
 County: **Randolph**
 Location: **25-6S-6W**
 Township: **Bremen**
 Acres: **15.49**
 Date: **9/15/2018**



Maps Provided By:



Area Symbol: IL157, Soil Area Version: 11

Code	Soil Description	Acres	Percent of field	Il. State Productivity Index Legend	Corn Bu/A	Soybeans Bu/A	Wheat Bu/A	Crop productivity index for optimum management
31A	Pierron silt loam, 0 to 2 percent slopes	4.26	27.5%		136	43	55	102
**582B	Homen silt loam, 2 to 5 percent slopes	3.86	24.9%		**149	**47	**55	**108
**582C2	Homen silt loam, 5 to 10 percent slopes, eroded	3.74	24.1%		**140	**44	**52	**101
**515C2	Bunkum silt loam, 5 to 10 percent slopes, eroded	2.37	15.3%		**136	**47	**52	**102
**855F	Ruma-Westmore silt loams, 18 to 35 percent slopes	1.26	8.1%		**107	**33	**41	**77
Weighted Average					137.8	44	52.7	101.2

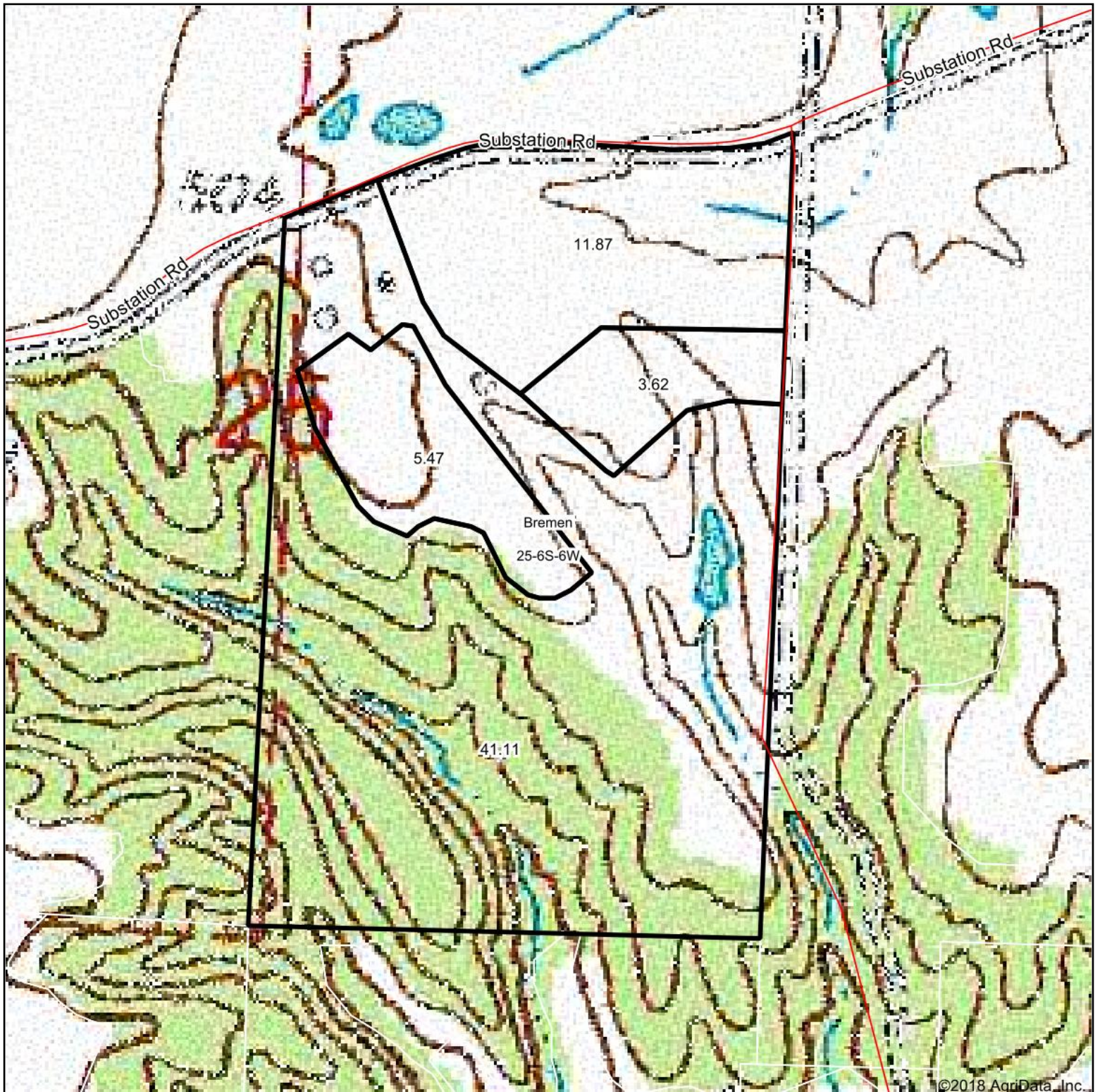
Table: Optimum Crop Productivity Ratings for Illinois Soil by K.R. Olson and J.M. Lang, Office of Research, ACES, University of Illinois at Champaign-Urbana. Version: 1/2/2012 Amended Table S2 B811

Crop yields and productivity indices for optimum management (B811) are maintained at the following NRES web site: <http://soilproductivity.nres.illinois.edu/>

** Indexes adjusted for slope and erosion according to Bulletin 811 Table S3

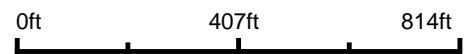
Soils data provided by USDA and NRCS. Soils data provided by University of Illinois at Champaign-Urbana.

Topography Map



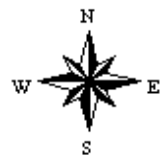
©2018 AgriData, Inc.

map center: 37° 58' 39.02, -89° 42' 42.84



Maps Provided By:
surety
CUSTOMIZED ONLINE MAPPING
© AgriData, Inc. 2018 www.AgriDataInc.com

25-6S-6W
Randolph County
Illinois



9/15/2018