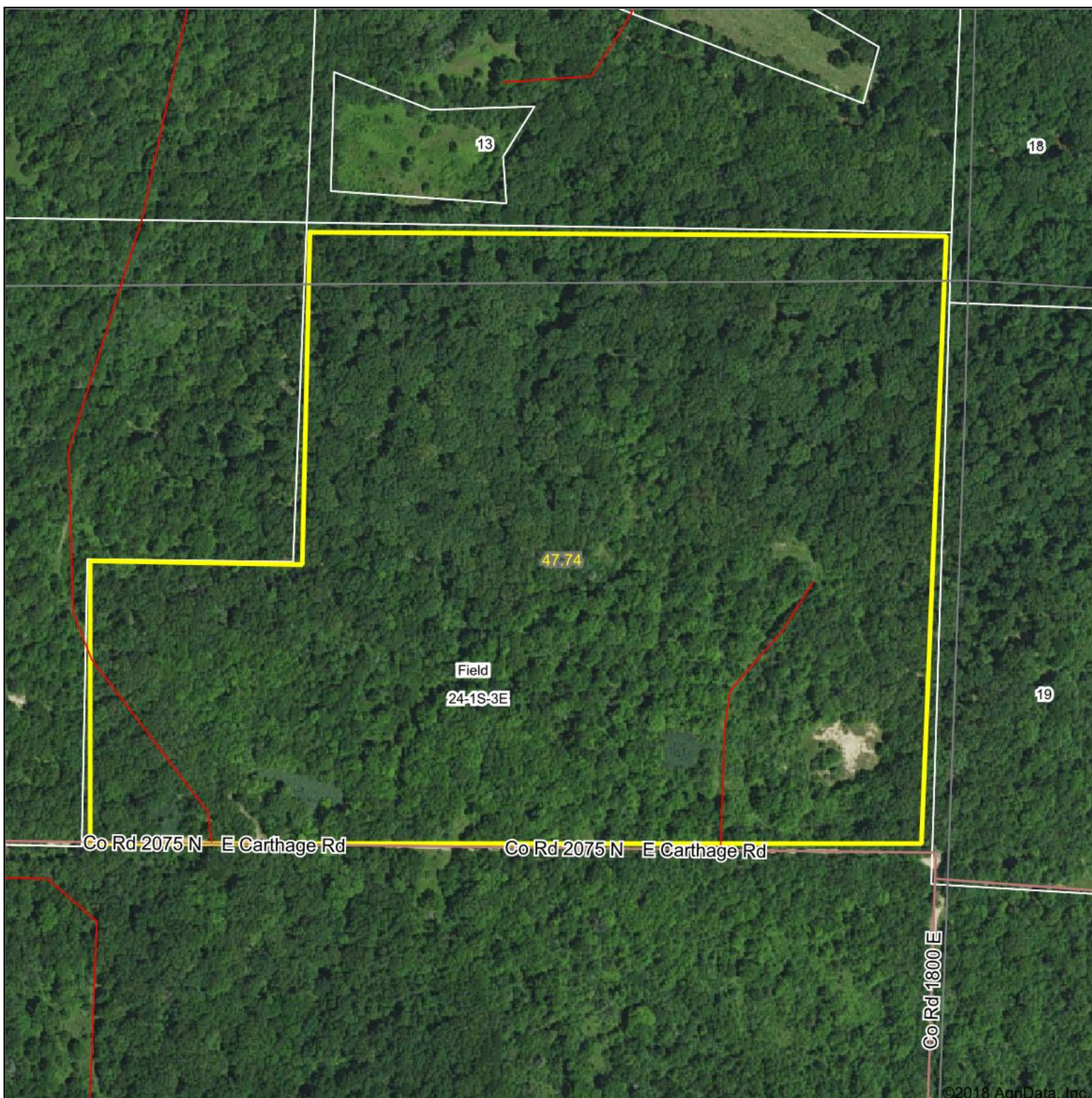


Aerial Map



©2018 AgriData, Inc.



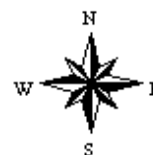
Maps Provided By:



map center: 38° 25' 50.33, -88° 48' 51.21

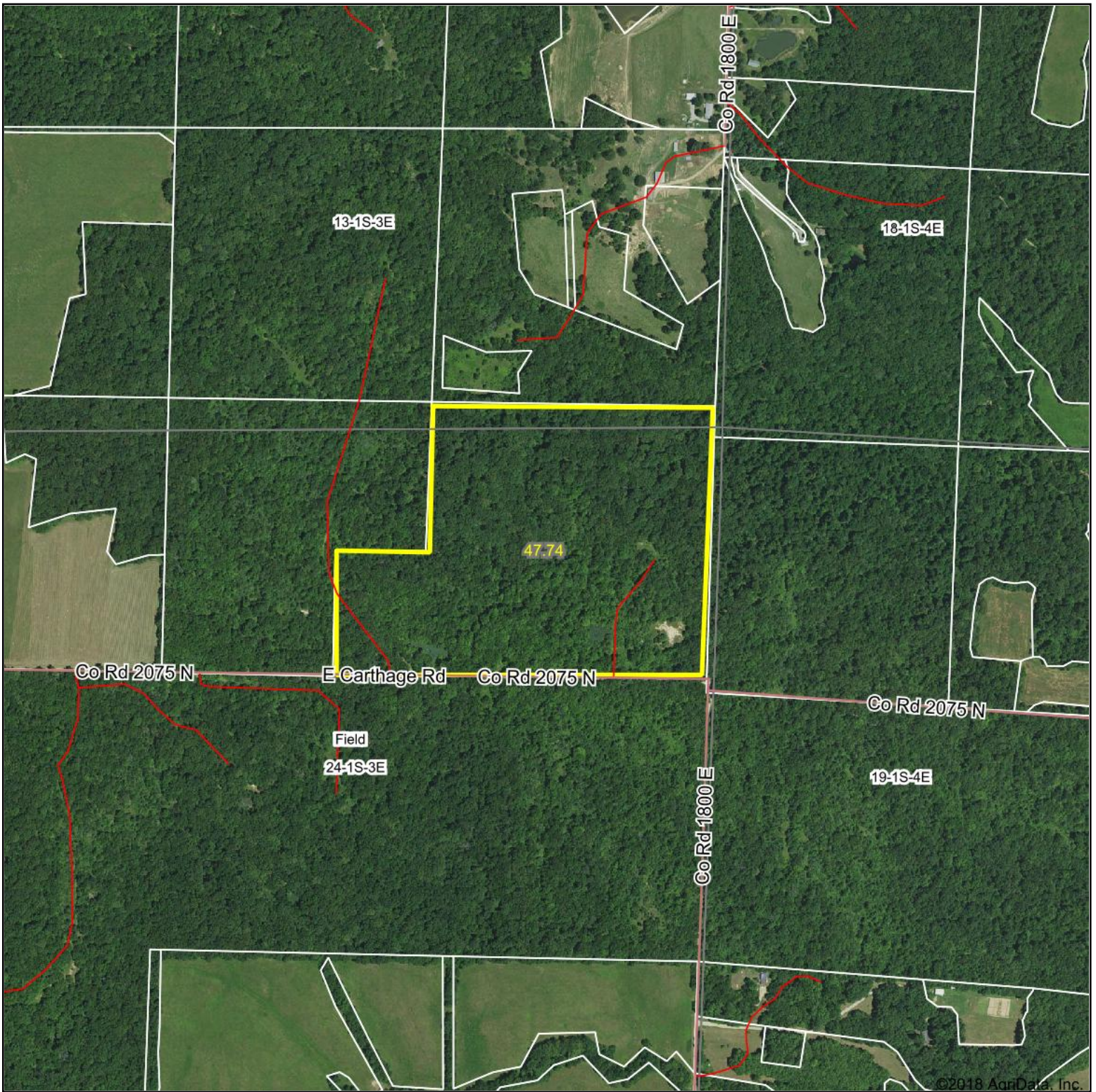
0ft 338ft 676ft

24-1S-3E
Jefferson County
Illinois



10/25/2018

Aerial Map



©2018 AgriData, Inc.

map center: 38° 25' 50.33, -88° 48' 50.76

0ft 764ft 1529ft



Maps Provided By:

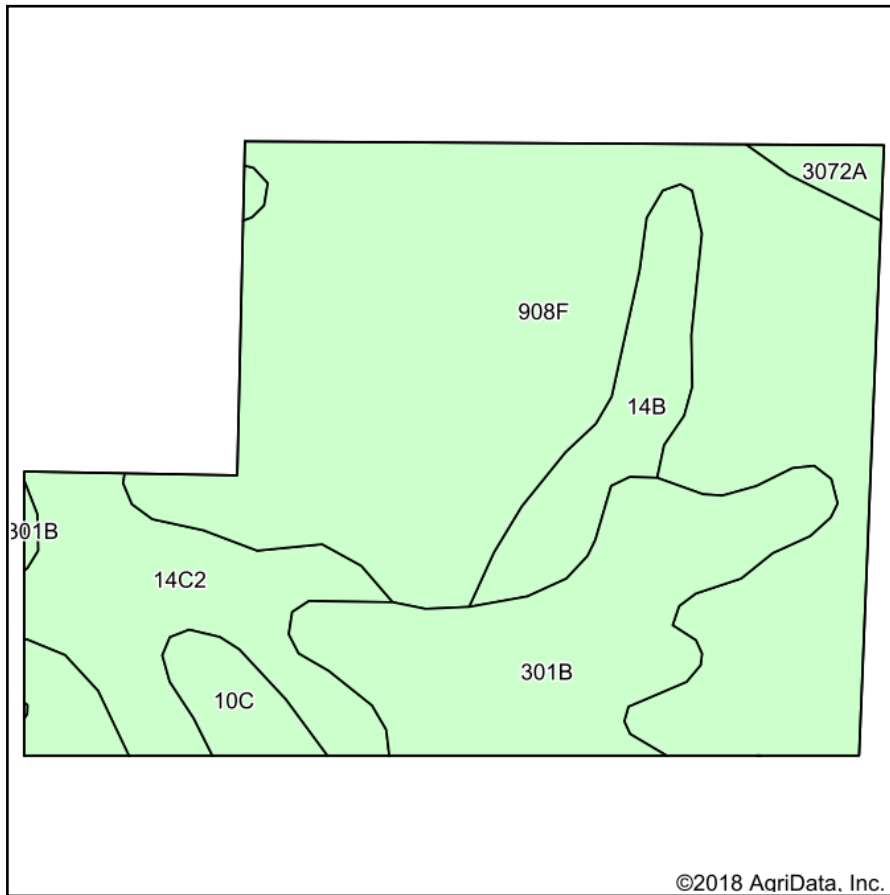


24-1S-3E
Jefferson County
Illinois

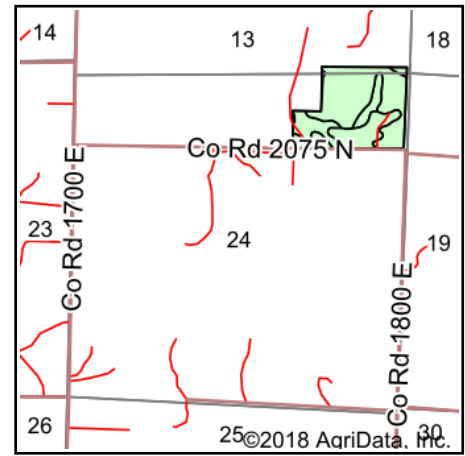


10/25/2018

Soils Map



Soils data provided by USDA and NRCS.



State: **Illinois**
 County: **Jefferson**
 Location: **24-1S-3E**
 Township: **Field**
 Acres: **47.74**
 Date: **10/25/2018**



Maps Provided By:



Area Symbol: IL081, Soil Area Version: 11

Code	Soil Description	Acres	Percent of field	Il. State Productivity Index Legend	Corn Bu/A	Soybeans Bu/A	Wheat Bu/A	Grass-legume e hay, T/A	Crop productivity index for optimum management
**908F	Hickory-Kell silt loams, 18 to 35 percent slopes	27.63	57.9%		**87	**29	**34	**2.81	**67
**301B	Grantsburg silt loam, 2 to 5 percent slopes	8.03	16.8%		**133	**46	**54	0.00	**101
**14C2	Ava silt loam, 5 to 10 percent slopes, eroded	6.11	12.8%		**122	**40	**50	0.00	**90
**14B	Ava silt loam, 2 to 5 percent slopes	3.25	6.8%		**134	**44	**54	0.00	**99
**10C	Plumfield silty clay loam, 5 to 10 percent slopes	2.12	4.4%		**103	**34	**39	**3.37	**78
3072A	Sharon silt loam, 0 to 2 percent slopes, frequently flooded	0.60	1.3%		164	53	63	0.00	122
Weighted Average					104.1	34.8	41.4	1.78	79

Table: Optimum Crop Productivity Ratings for Illinois Soil by K.R. Olson and J.M. Lang, Office of Research, ACES, University of Illinois at Champaign-Urbana. Version: 1/2/2012 Amended Table S2 B811

Crop yields and productivity indices for optimum management (B811) are maintained at the following NRES web site: <http://soilproductivity.nres.illinois.edu/>

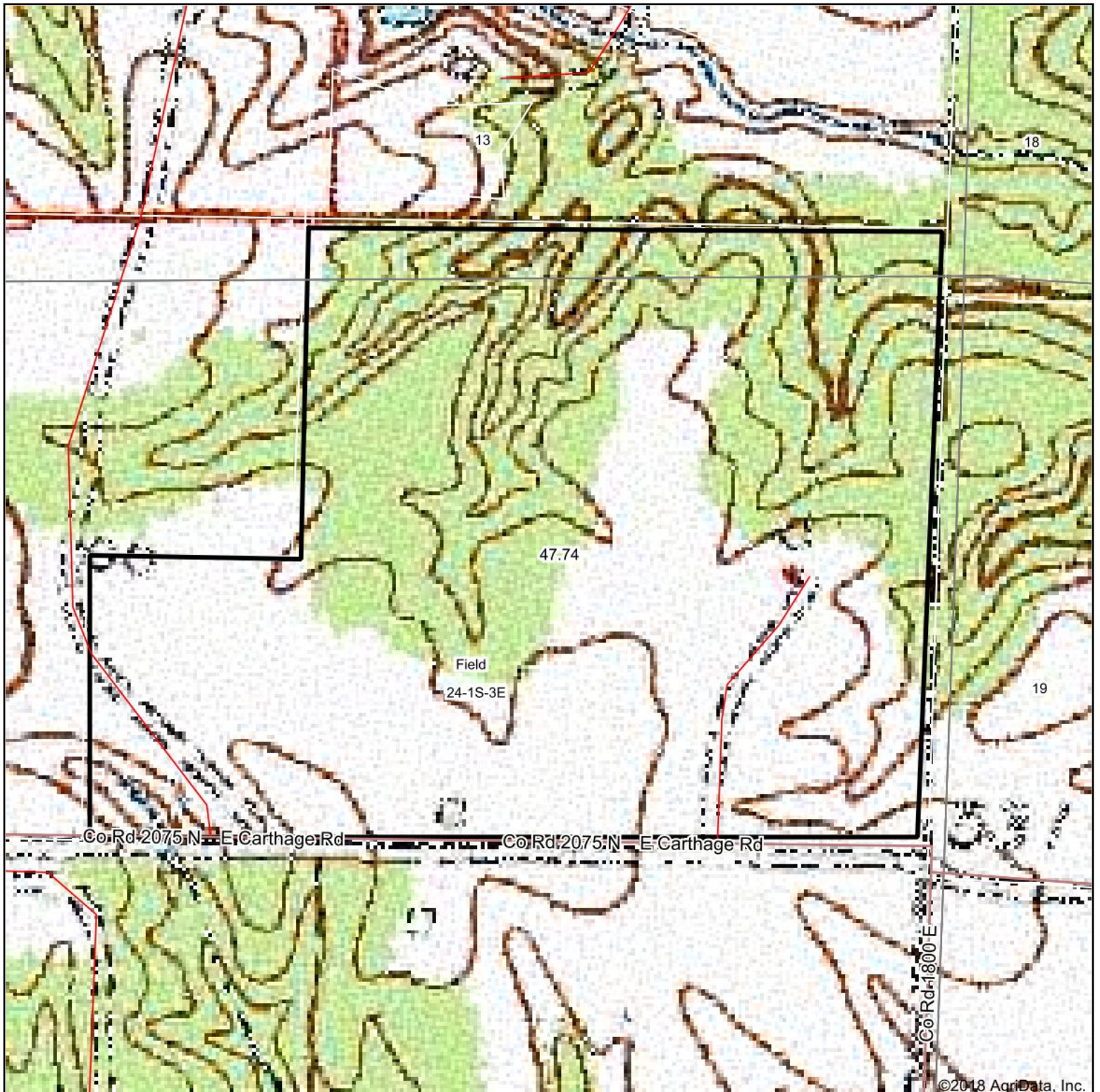
** Indexes adjusted for slope and erosion according to Bulletin 811 Table S3

e Soils in the well drained group were not rated for grass-legume and are shown with a zero "0".

Soils data provided by USDA and NRCS. Soils data provided by University of Illinois at Champaign-Urbana.

*c: Using Capabilities Class Dominant Condition Aggregation Method

Topography Map



map center: 38° 25' 50.33, -88° 48' 51.21

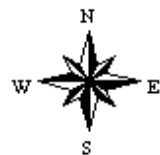
0ft 338ft 676ft



Maps Provided By:



24-1S-3E
Jefferson County
Illinois



10/25/2018