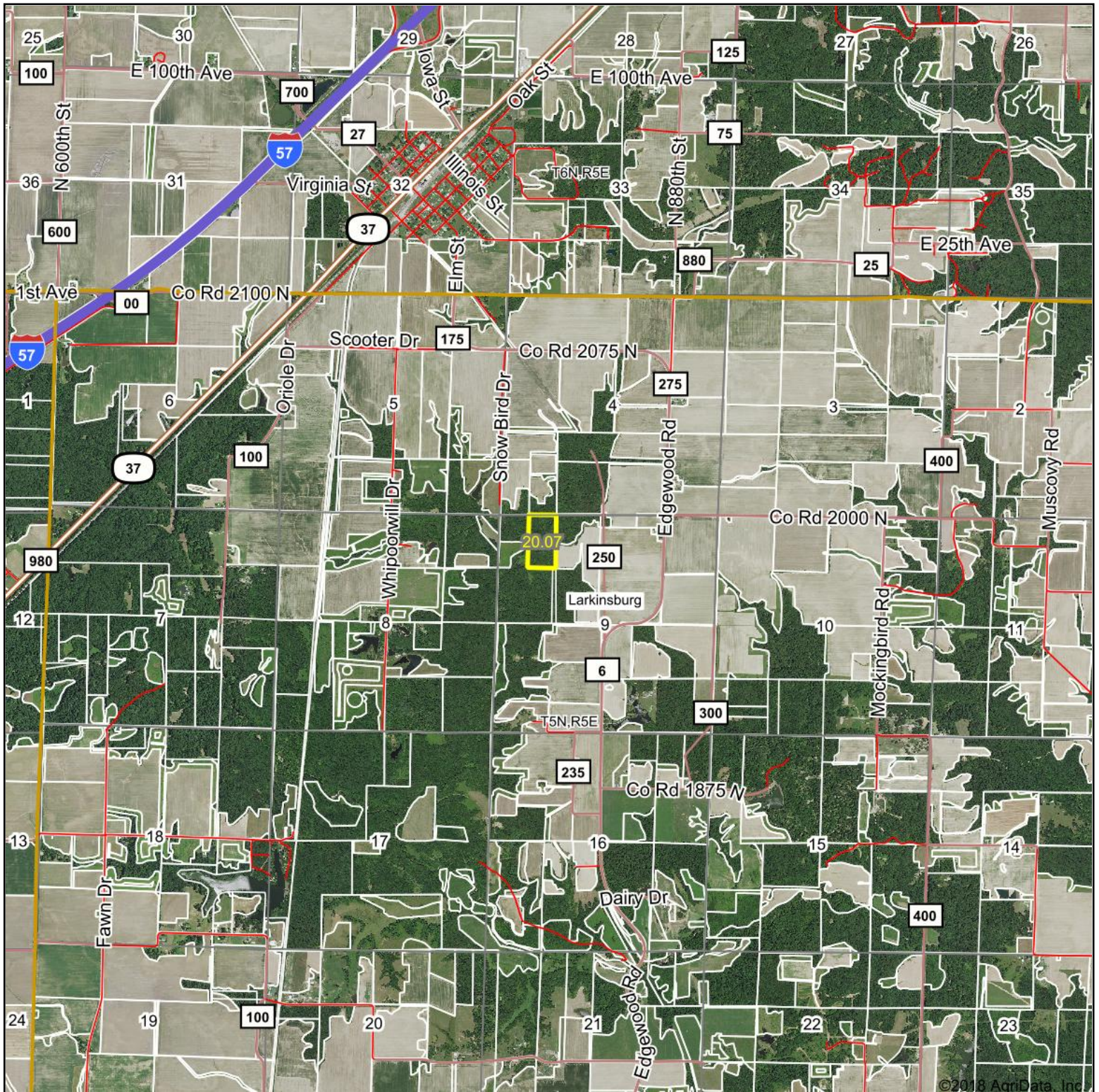


# Aerial Map



©2018 AgriData, Inc.

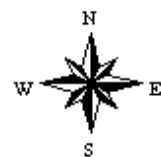


map center: 38° 53' 52.76, -88° 39' 3.64

0ft 3796ft 7592ft

Maps Provided By:  
 **surety**  
 CUSTOMIZED ONLINE MAPPING  
 © AgriData, Inc. 2018 www.AgriDataInc.com

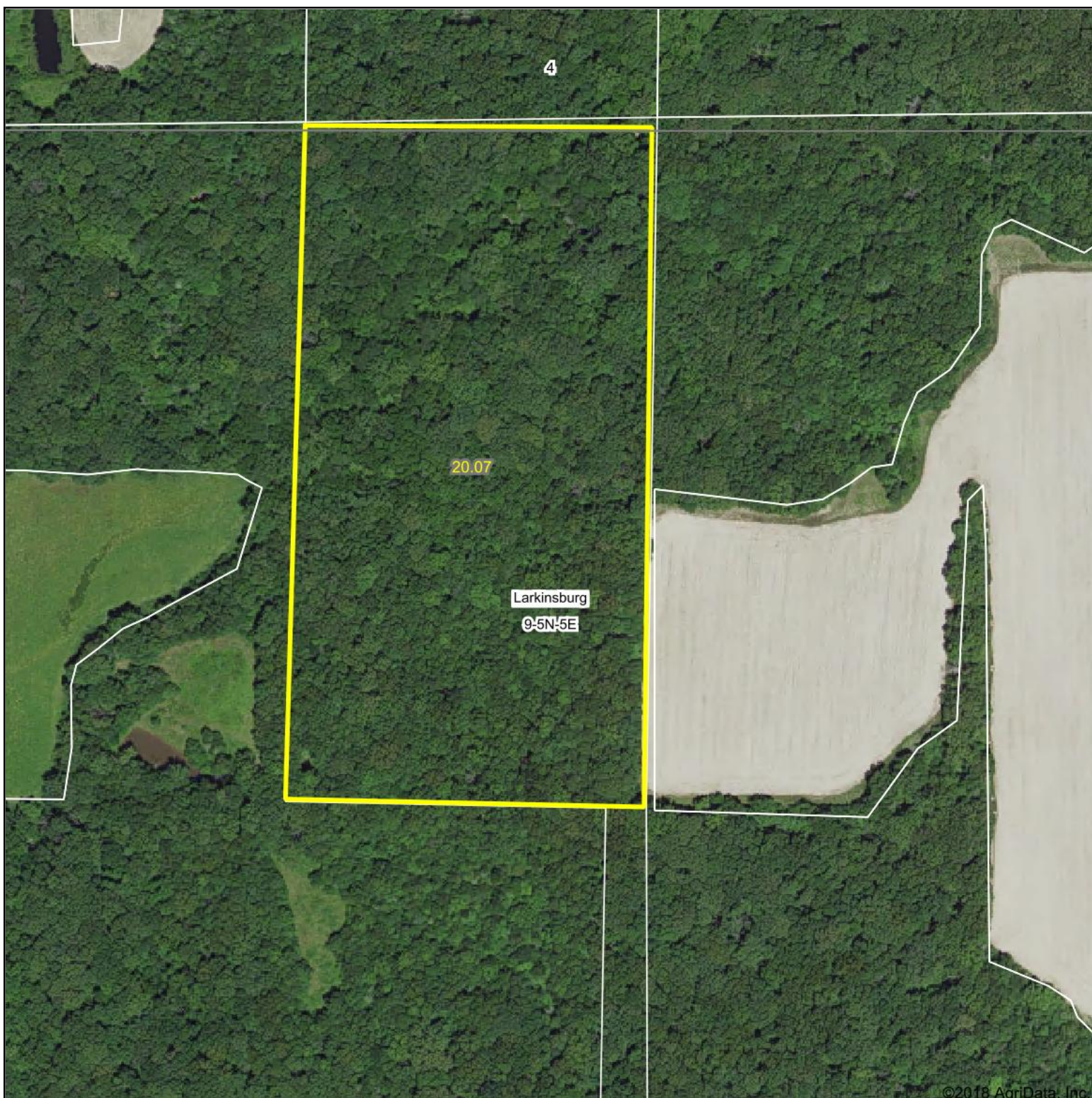
**9-5N-5E**  
**Clay County**  
**Illinois**



10/25/2018



# Aerial Map



map center: 38° 53' 52.79, -88° 39' 3.73

0ft 299ft 597ft



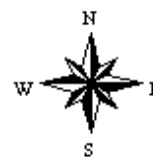
Maps Provided By:



© AgriData, Inc. 2018

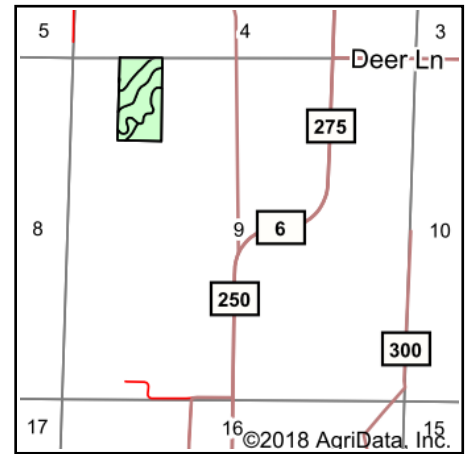
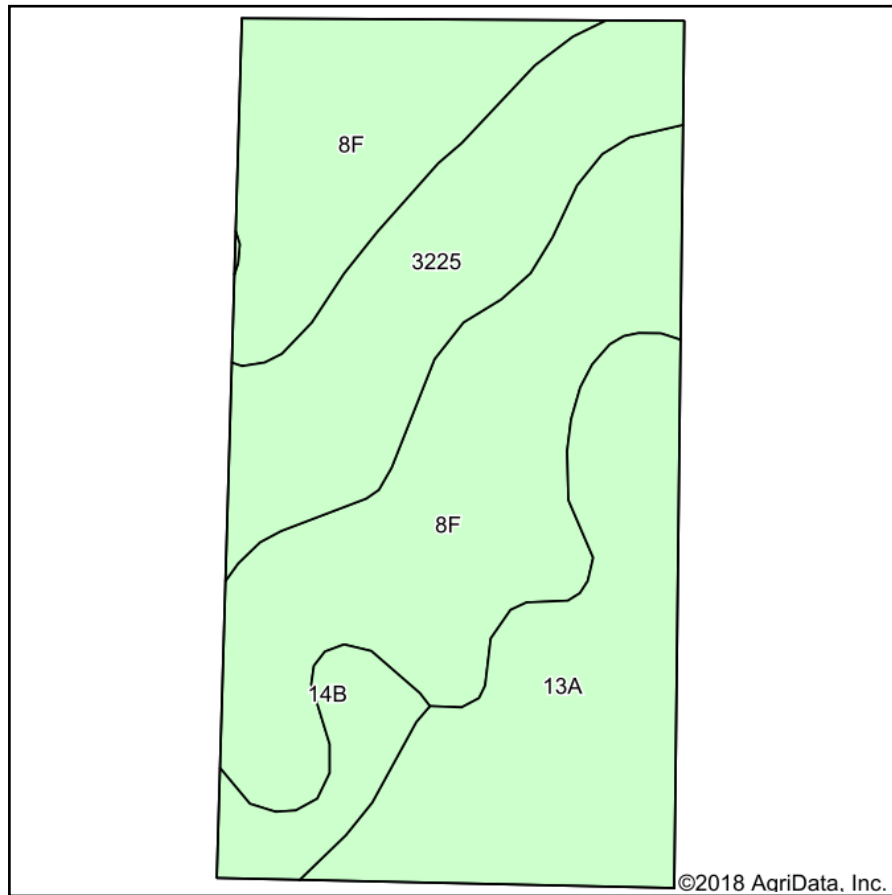
www.AgriDataInc.com

**9-5N-5E**  
**Clay County**  
**Illinois**



10/25/2018

# Soils Map



State: **Illinois**  
 County: **Clay**  
 Location: **9-5N-5E**  
 Township: **Larkinsburg**  
 Acres: **20.07**  
 Date: **10/25/2018**



Maps Provided By:



## Area Symbol: IL025, Soil Area Version: 13

Code	Soil Description	Acres	Percent of field	Il. State Productivity Index Legend	Corn Bu/A	Soybeans Bu/A	Wheat Bu/A	Grass-legume e hay, T/A	Crop productivity index for optimum management
**8F	Hickory silt loam, 18 to 35 percent slopes	9.48	47.2%		**86	**29	**35	0.00	**65
13A	Bluford silt loam, 0 to 2 percent slopes	5.16	25.7%		136	44	55	3.39	101
3225	Holton silt loam, frequently flooded	4.32	21.5%		135	43	50	4.26	100
**14B	Ava silt loam, 2 to 5 percent slopes	1.11	5.5%		**134	**44	**54	0.00	**99
<b>Weighted Average</b>					<b>112.1</b>	<b>36.7</b>	<b>44.4</b>	<b>1.79</b>	<b>83.7</b>

**Table: Optimum Crop Productivity Ratings for Illinois Soil by K.R. Olson and J.M. Lang, Office of Research, ACES, University of Illinois at Champaign-Urbana.** Version: 1/2/2012 Amended Table S2 B811

Crop yields and productivity indices for optimum management (B811) are maintained at the following NRES web site: <http://soilproductivity.nres.illinois.edu/>

\*\* Indexes adjusted for slope and erosion according to Bulletin 811 Table S3

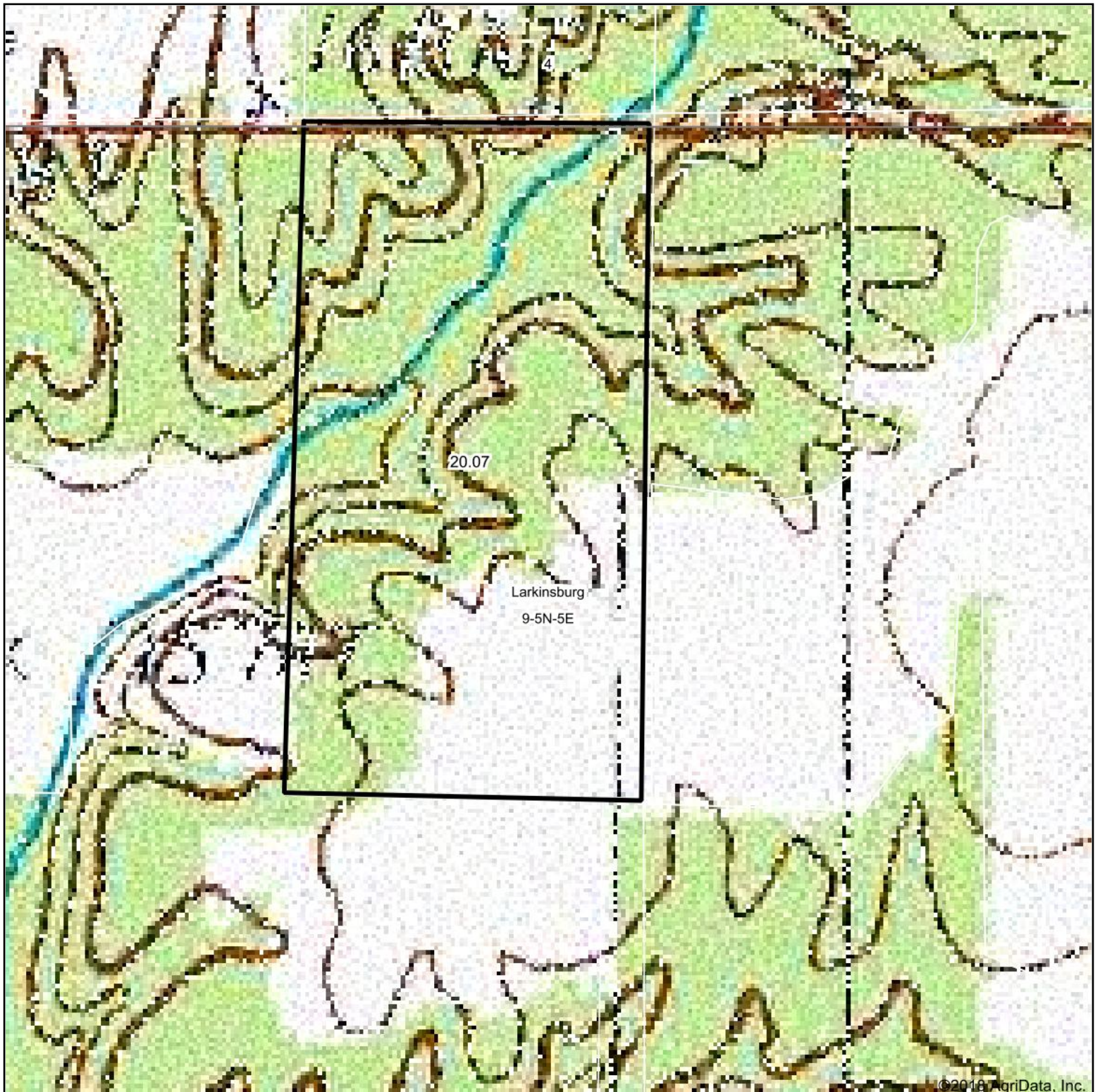
e Soils in the well drained group were not rated for grass-legume and are shown with a zero "0".

Soils data provided by USDA and NRCS. Soils data provided by University of Illinois at Champaign-Urbana.

\*c: Using Capabilities Class Dominant Condition Aggregation Method



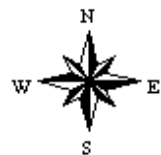
# Topography Map



map center: 38° 53' 52.79, -88° 39' 3.73

0ft 299ft 597ft

**9-5N-5E**  
**Clay County**  
**Illinois**



10/25/2018



Maps Provided By:



© AgriData, Inc. 2018 [www.AgriDataInc.com](http://www.AgriDataInc.com)