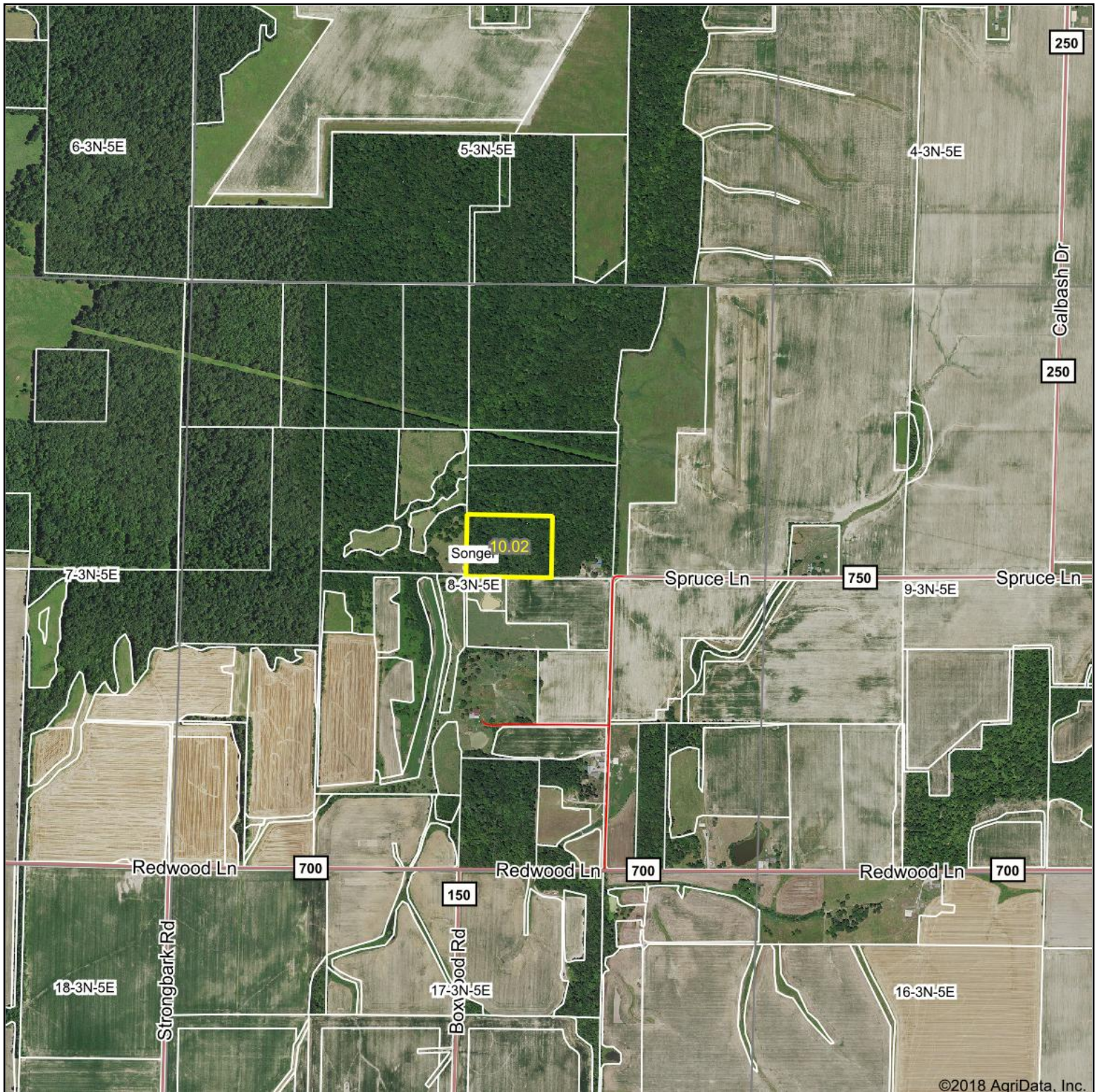


Aerial Map



©2018 AgriData, Inc.

map center: 38° 43' 0.68, -88° 39' 52.89

0ft 1411ft 2822ft



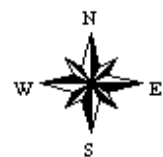
Maps Provided By:



© AgriData, Inc. 2018

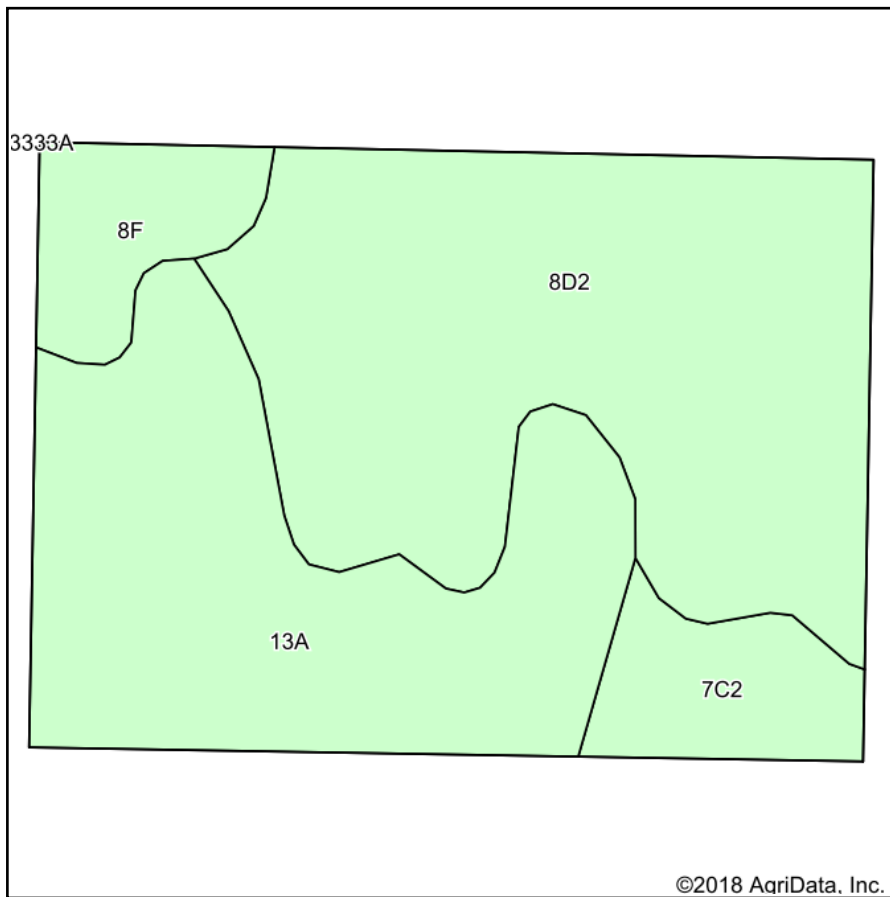
www.AgriDataInc.com

8-3N-5E
Clay County
Illinois

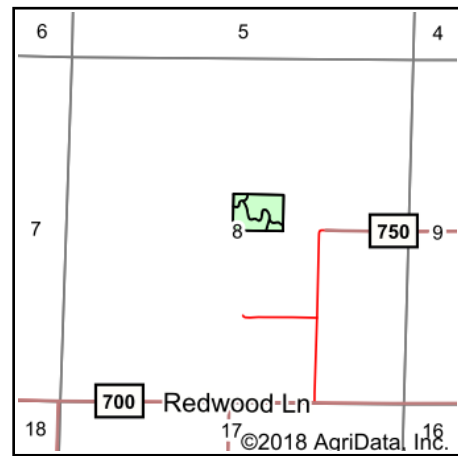


10/25/2018

Soils Map



Soils data provided by USDA and NRCS.



State: **Illinois**
 County: **Clay**
 Location: **8-3N-5E**
 Township: **Songer**
 Acres: **10.02**
 Date: **10/25/2018**



Maps Provided By:



Area Symbol: IL025, Soil Area Version: 13

Code	Soil Description	Acres	Percent of field	Il. State Productivity Index Legend	Corn Bu/A	Soybeans Bu/A	Wheat Bu/A	Grass-legume e hay, T/A	Crop productivity index for optimum management
**8D2	Hickory silt loam, 10 to 18 percent slopes, eroded	4.97	49.6%		**108	**36	**44	0.00	**82
13A	Bluford silt loam, 0 to 2 percent slopes	3.62	36.1%		136	44	55	3.39	101
**7C2	Atlas silt loam, 5 to 10 percent slopes, eroded	0.74	7.4%		**105	**37	**41	**3.16	**81
**8F	Hickory silt loam, 18 to 35 percent slopes	0.69	6.9%		**86	**29	**35	0.00	**65
Weighted Average					116.4	38.5	47.1	1.46	87.6

Table: Optimum Crop Productivity Ratings for Illinois Soil by K.R. Olson and J.M. Lang, Office of Research, ACES, University of Illinois at Champaign-Urbana. Version: 1/2/2012 Amended Table S2 B811

Crop yields and productivity indices for optimum management (B811) are maintained at the following NRES web site: <http://soilproductivity.nres.illinois.edu/>

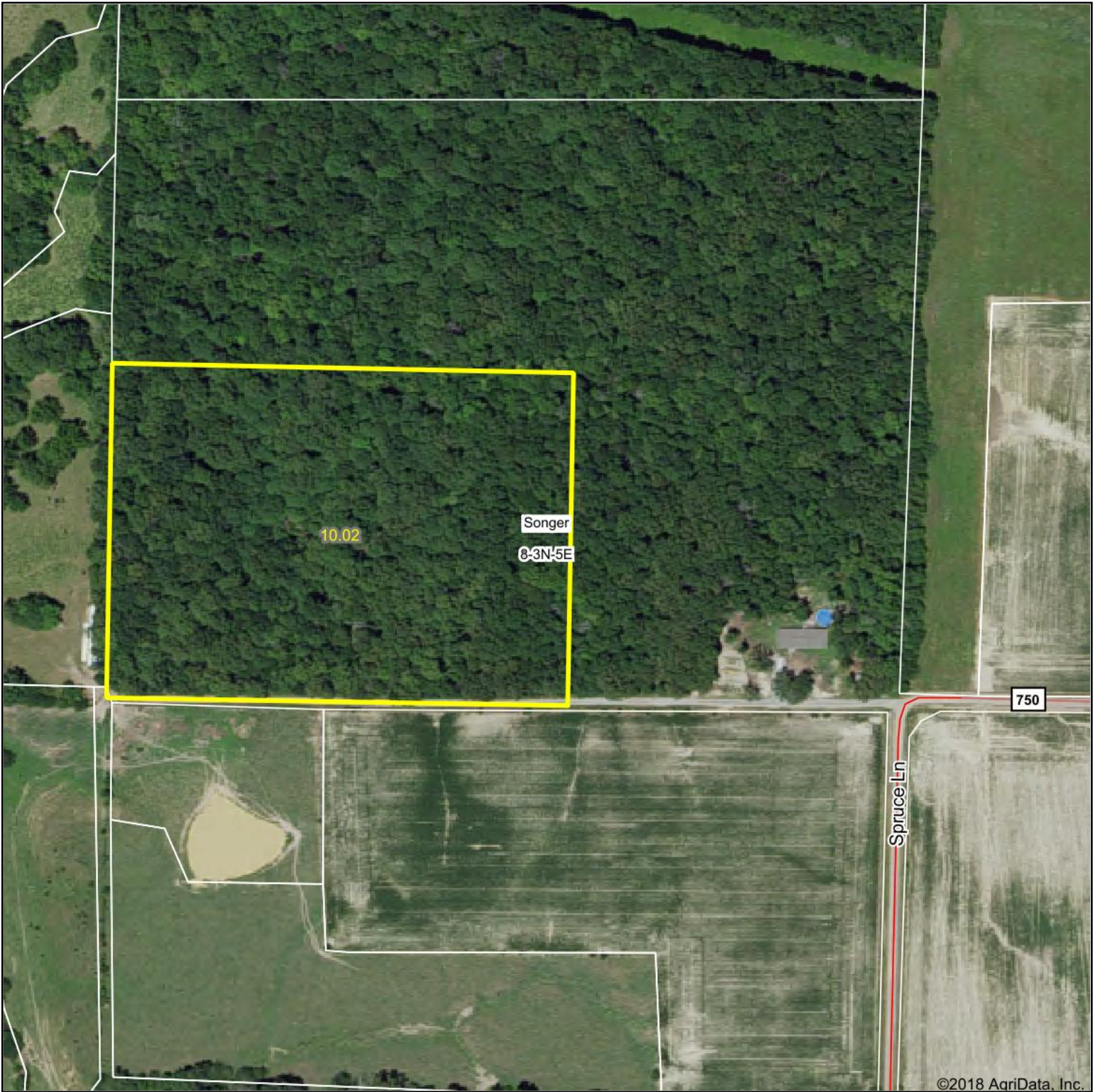
** Indexes adjusted for slope and erosion according to Bulletin 811 Table S3

e Soils in the well drained group were not rated for grass-legume and are shown with a zero "0".

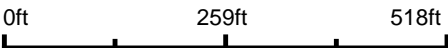
Soils data provided by USDA and NRCS. Soils data provided by University of Illinois at Champaign-Urbana.

*c: Using Capabilities Class Dominant Condition Aggregation Method

Aerial Map

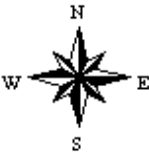


map center: 38° 43' 0.69, -88° 39' 53



Maps Provided By:
surety
CUSTOMIZED ONLINE MAPPING
© AgriData, Inc. 2018 www.AgriDataInc.com

8-3N-5E
Clay County
Illinois



10/25/2018

Field borders provided by Farm Service Agency as of 5/21/2008. Soils data provided by University of Illinois at Champaign-Urbana.

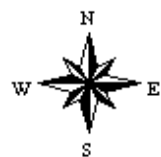
Topography Map



map center: 38° 43' 0.69, -88° 39' 53

0ft 259ft 518ft

8-3N-5E
Clay County
Illinois



10/25/2018



Maps Provided By:

