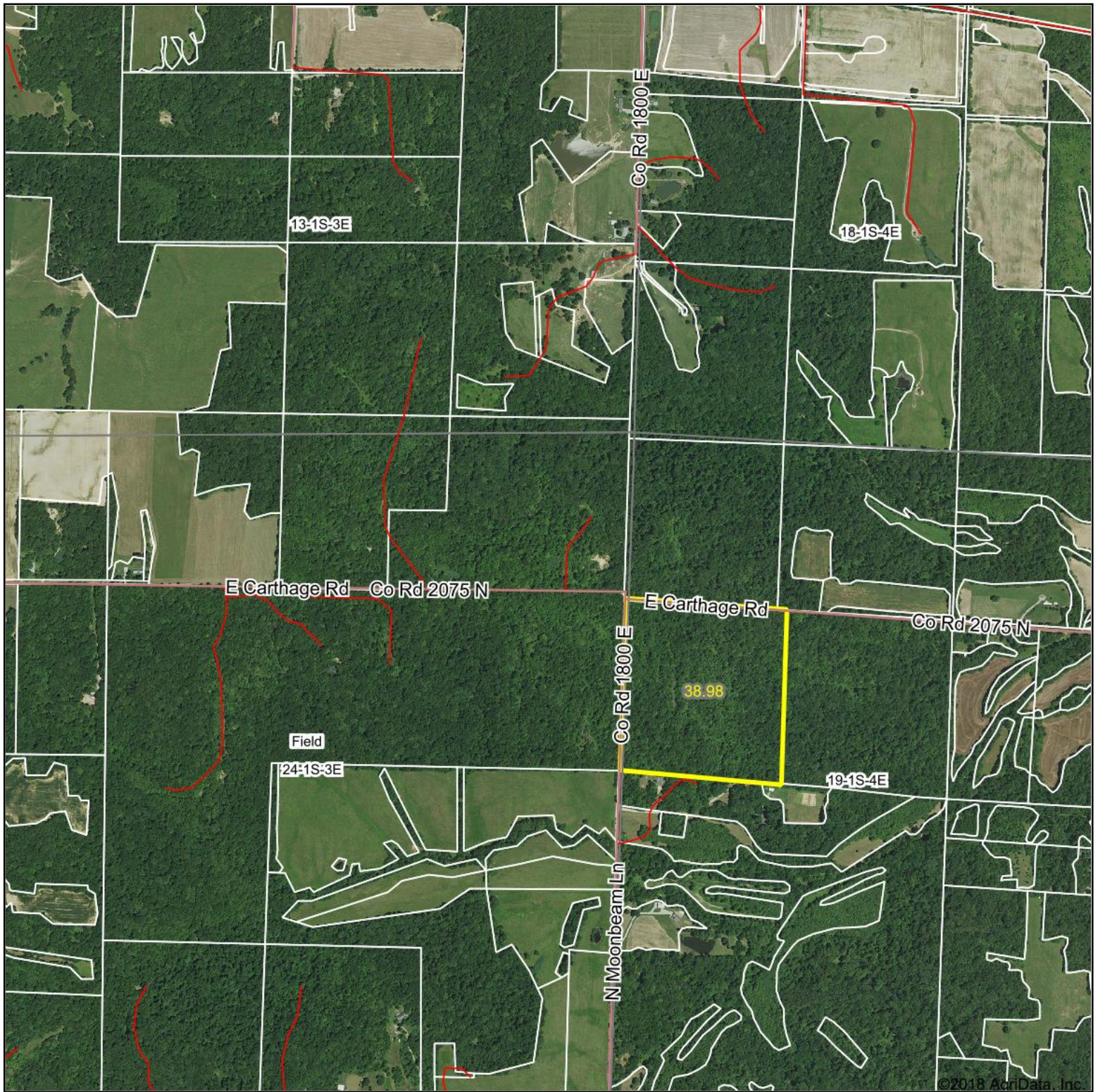


Aerial Map



map center: 38° 25' 47.35, -88° 48' 48.21

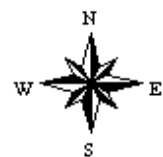
0ft 1207ft 2415ft



Maps Provided By:

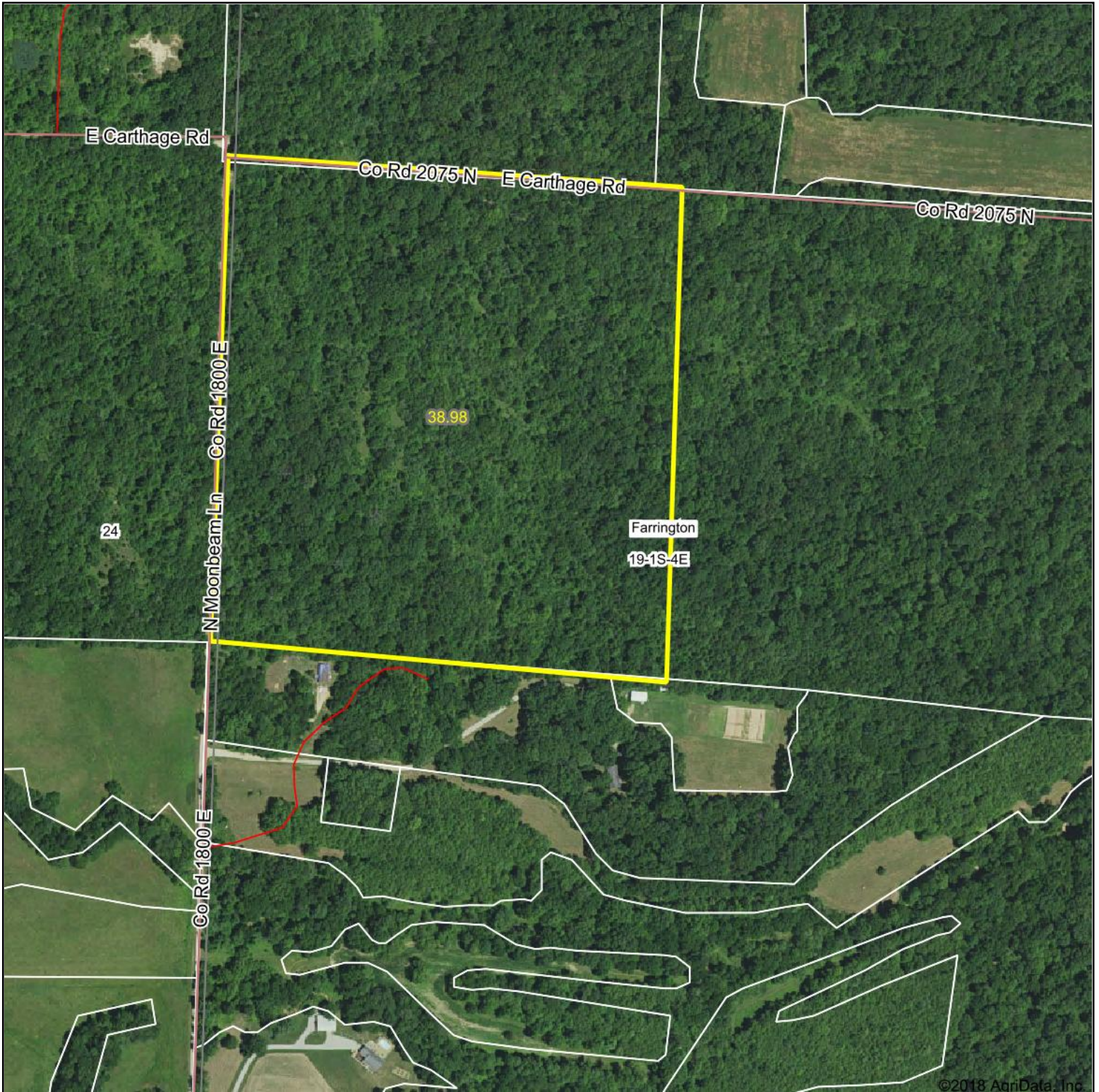


24-1S-3E
Jefferson County
Illinois



10/25/2018

Aerial Map



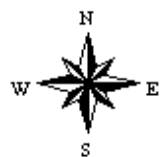
©2018 AgriData, Inc.



map center: 38° 25' 33.08, -88° 48' 29.15

0ft 430ft 860ft

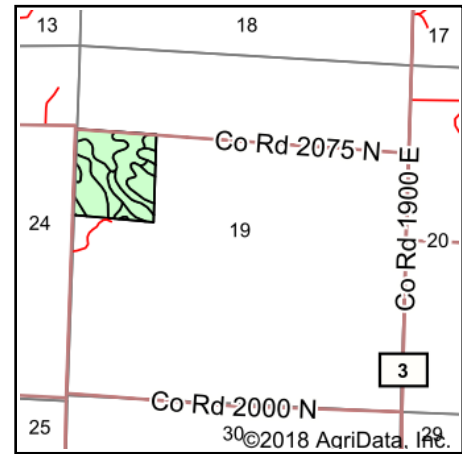
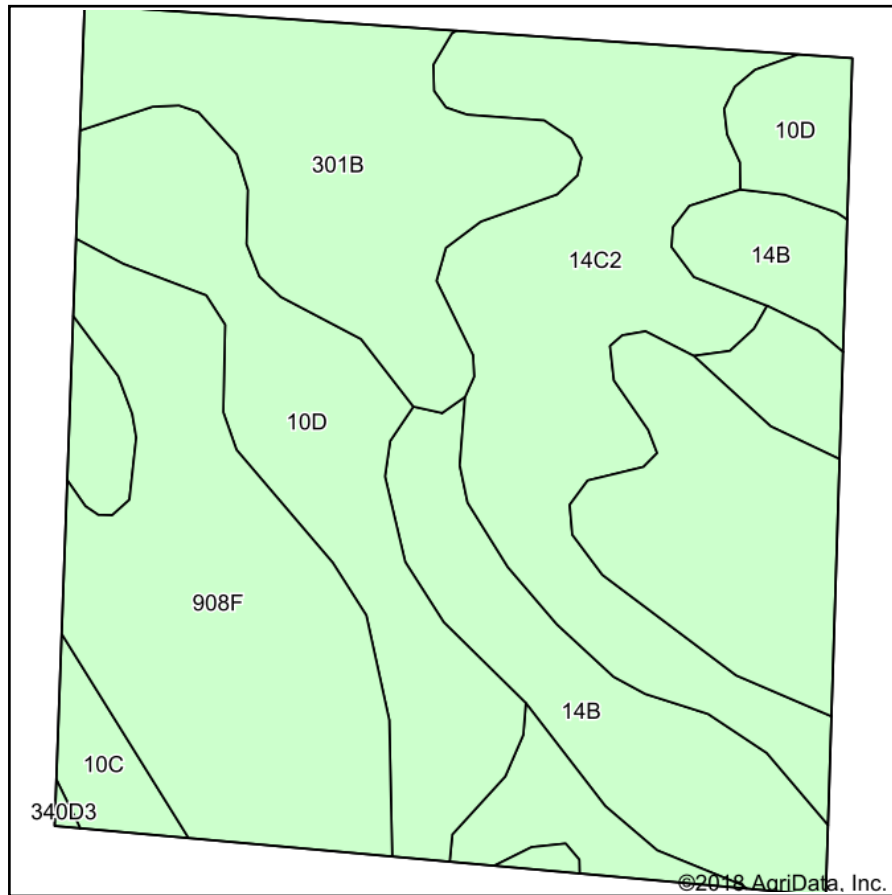
19-1S-4E
Jefferson County
Illinois



10/25/2018

Maps Provided By:
 **surety**
CUSTOMIZED ONLINE MAPPING
© AgriData, Inc. 2018 www.AgriDataInc.com

Soils Map



State: **Illinois**
 County: **Jefferson**
 Location: **19-1S-4E**
 Township: **Farrington**
 Acres: **38.98**
 Date: **10/25/2018**



Maps Provided By:

 CUSTOMIZED ONLINE MAPPING
 © AgriData, Inc. 2018 www.AgriDataInc.com



Area Symbol: IL081, Soil Area Version: 11

Code	Soil Description	Acres	Percent of field	Il. State Productivity Index Legend	Corn Bu/A	Soybeans Bu/A	Wheat Bu/A	Grass-legume e hay, T/A	Crop productivity index for optimum management
**908F	Hickory-Kell silt loams, 18 to 35 percent slopes	10.97	28.1%		**87	**29	**34	**2.81	**67
**14C2	Ava silt loam, 5 to 10 percent slopes, eroded	8.76	22.5%		**122	**40	**50	0.00	**90
**10D	Plumfield silty clay loam, 10 to 18 percent slopes	7.92	20.3%		**97	**32	**37	**3.19	**74
**301B	Grantsburg silt loam, 2 to 5 percent slopes	5.77	14.8%		**133	**46	**54	0.00	**101
**14B	Ava silt loam, 2 to 5 percent slopes	4.81	12.3%		**134	**44	**54	0.00	**99
**10C	Plumfield silty clay loam, 5 to 10 percent slopes	0.75	1.9%		**103	**34	**39	**3.37	**78
Weighted Average					109.8	36.5	43.7	1.50	82.8

Table: Optimum Crop Productivity Ratings for Illinois Soil by K.R. Olson and J.M. Lang, Office of Research, ACES, University of Illinois at Champaign-Urbana. Version: 1/2/2012 Amended Table S2 B811

Crop yields and productivity indices for optimum management (B811) are maintained at the following NRES web site: <http://soilproductivity.nres.illinois.edu/>

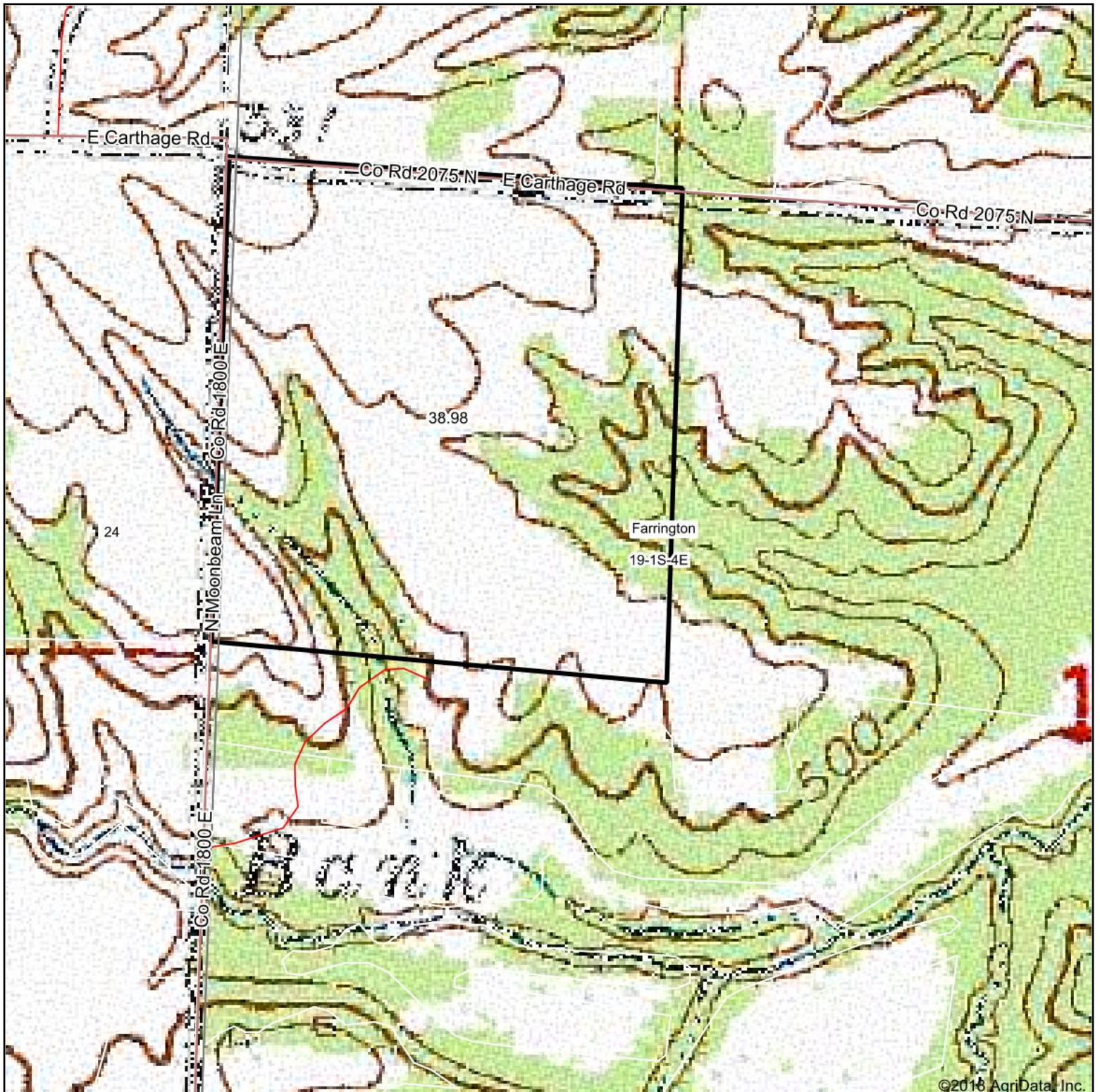
** Indexes adjusted for slope and erosion according to Bulletin 811 Table S3

e Soils in the well drained group were not rated for grass-legume and are shown with a zero "0".

Soils data provided by USDA and NRCS. Soils data provided by University of Illinois at Champaign-Urbana.

*c: Using Capabilities Class Dominant Condition Aggregation Method

Topography Map

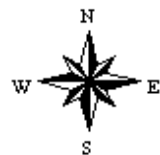


©2018 AgriData, Inc.

map center: 38° 25' 33.08, -88° 48' 29.15

0ft 430ft 860ft

19-1S-4E
Jefferson County
Illinois



10/25/2018



Maps Provided By:



© AgriData, Inc. 2018

www.AgriDataInc.com