

Aerial Map



©2018 AgriData, Inc.

map center: 38° 37' 49.79, -88° 42' 46.91

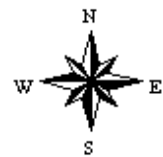


Maps Provided By:



© AgriData, Inc. 2018 www.AgridataInc.com

12-2N-4E
Marion County
Illinois



9/28/2018

Aerial Map

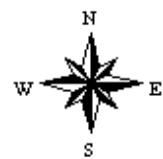


©2018 AgriData, Inc.

map center: 38° 37' 49.79, -88° 42' 46.91

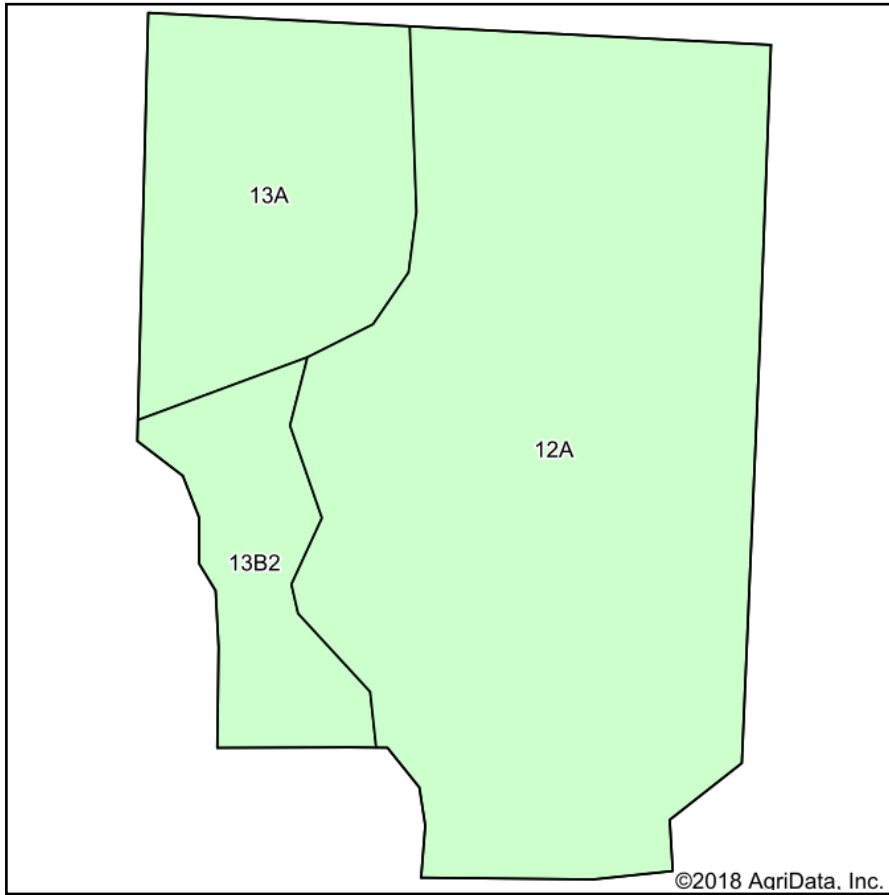


12-2N-4E
Marion County
Illinois

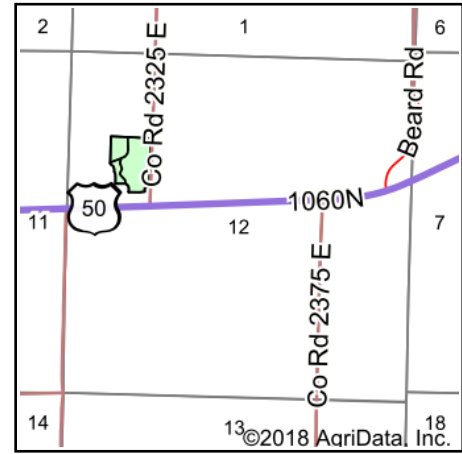


9/28/2018

Soils Map



Soils data provided by USDA and NRCS.



State: **Illinois**
 County: **Marion**
 Location: **12-2N-4E**
 Township: **Iuka**
 Acres: **10.49**
 Date: **9/28/2018**



Maps Provided By:



Area Symbol: IL121, Soil Area Version: 14

Code	Soil Description	Acres	Percent of field	Il. State Productivity Index Legend	Corn Bu/A	Soybeans Bu/A	Wheat Bu/A	Grass-legume e hay, T/A	Crop productivity index for optimum management
12A	Wynoose silt loam, 0 to 2 percent slopes	7.34	70.0%		128	42	51	4.26	97
13A	Bluford silt loam, 0 to 2 percent slopes	2.12	20.2%		136	44	55	3.39	101
**13B2	Bluford silt loam, 2 to 5 percent slopes, eroded	1.03	9.8%		**129	**42	**52	**3.22	**96
Weighted Average					129.7	42.4	51.9	3.98	97.7

Table: Optimum Crop Productivity Ratings for Illinois Soil by K.R. Olson and J.M. Lang, Office of Research, ACES, University of Illinois at Champaign-Urbana. Version: 1/2/2012 Amended Table S2 B811

Crop yields and productivity indices for optimum management (B811) are maintained at the following NRES web site: <http://soilproductivity.nres.illinois.edu/>

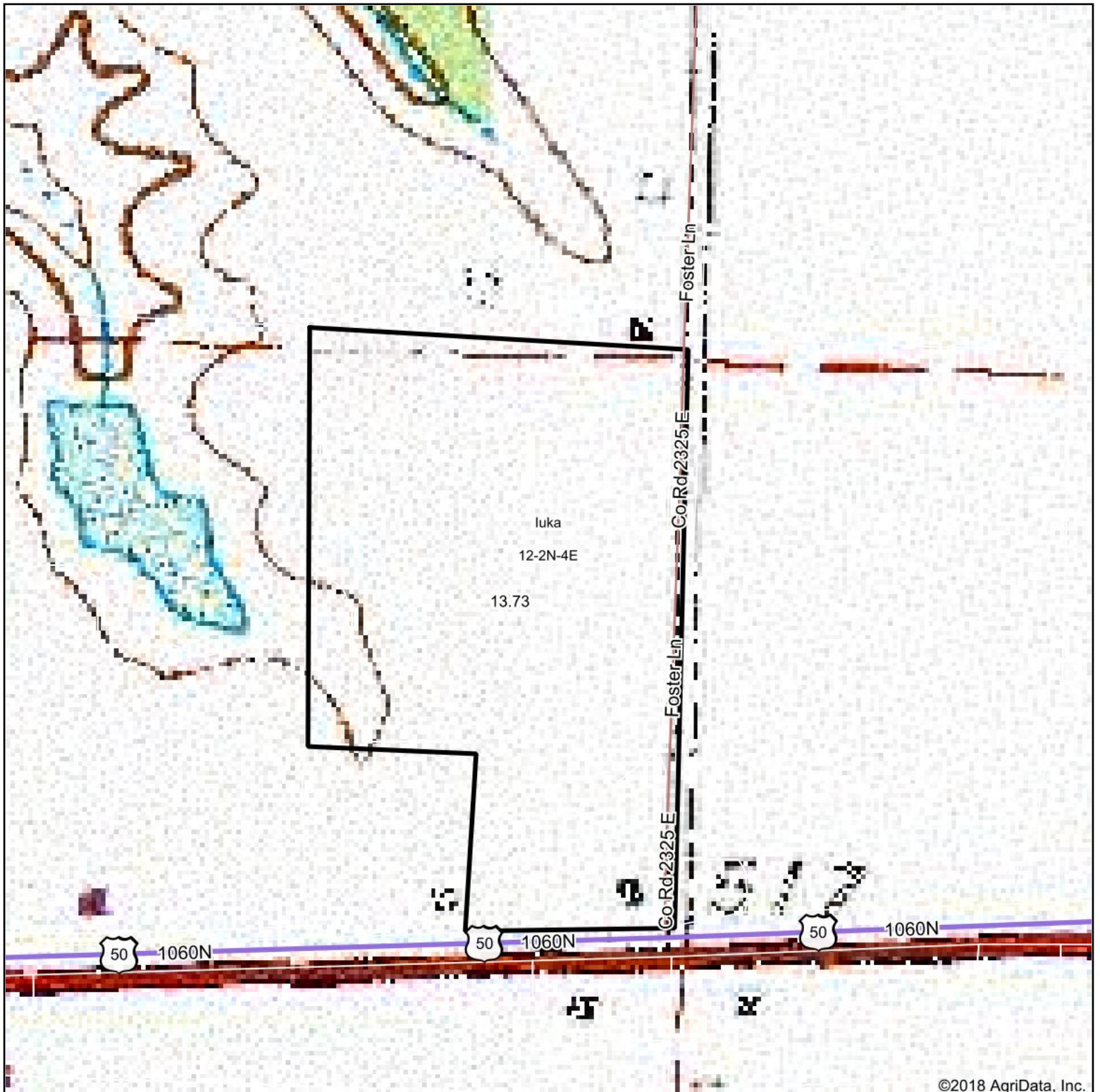
** Indexes adjusted for slope and erosion according to Bulletin 811 Table S3

e Soils in the well drained group were not rated for grass-legume and are shown with a zero "0".

Soils data provided by USDA and NRCS. Soils data provided by University of Illinois at Champaign-Urbana.

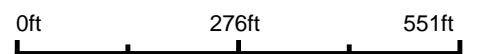
*c: Using Capabilities Class Dominant Condition Aggregation Method

Topography Map



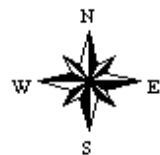
©2018 AgriData, Inc.

map center: 38° 37' 49.79, -88° 42' 46.91



Maps Provided By:
surety
CUSTOMIZED ONLINE MAPPING
© AgriData, Inc. 2018 www.AgriDataInc.com

12-2N-4E
Marion County
Illinois



9/28/2018