

Aerial Map



©2018 AgriData, Inc.

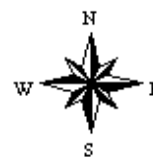


map center: 38° 30' 1.15, -88° 49' 2.13

0ft 371ft 741ft

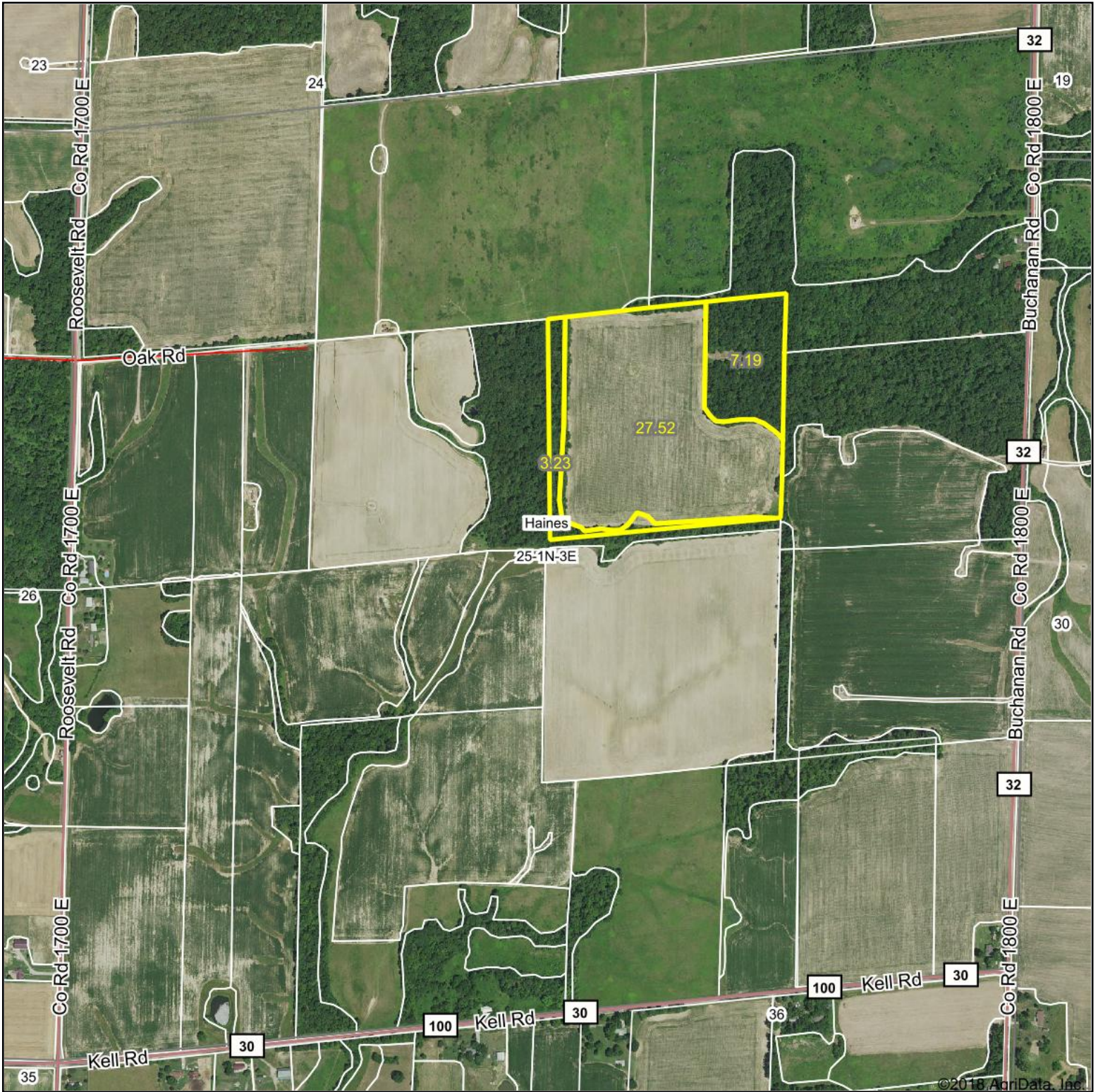
Maps Provided By:
surety
CUSTOMIZED ONLINE MAPPING
© AgriData, Inc. 2018 www.AgriDataInc.com

25-1N-3E
Marion County
Illinois



9/15/2018

Aerial Map



©2018, AgriData, Inc.



map center: 38° 29' 54.97, -88° 49' 9.83

0ft 876ft 1752ft

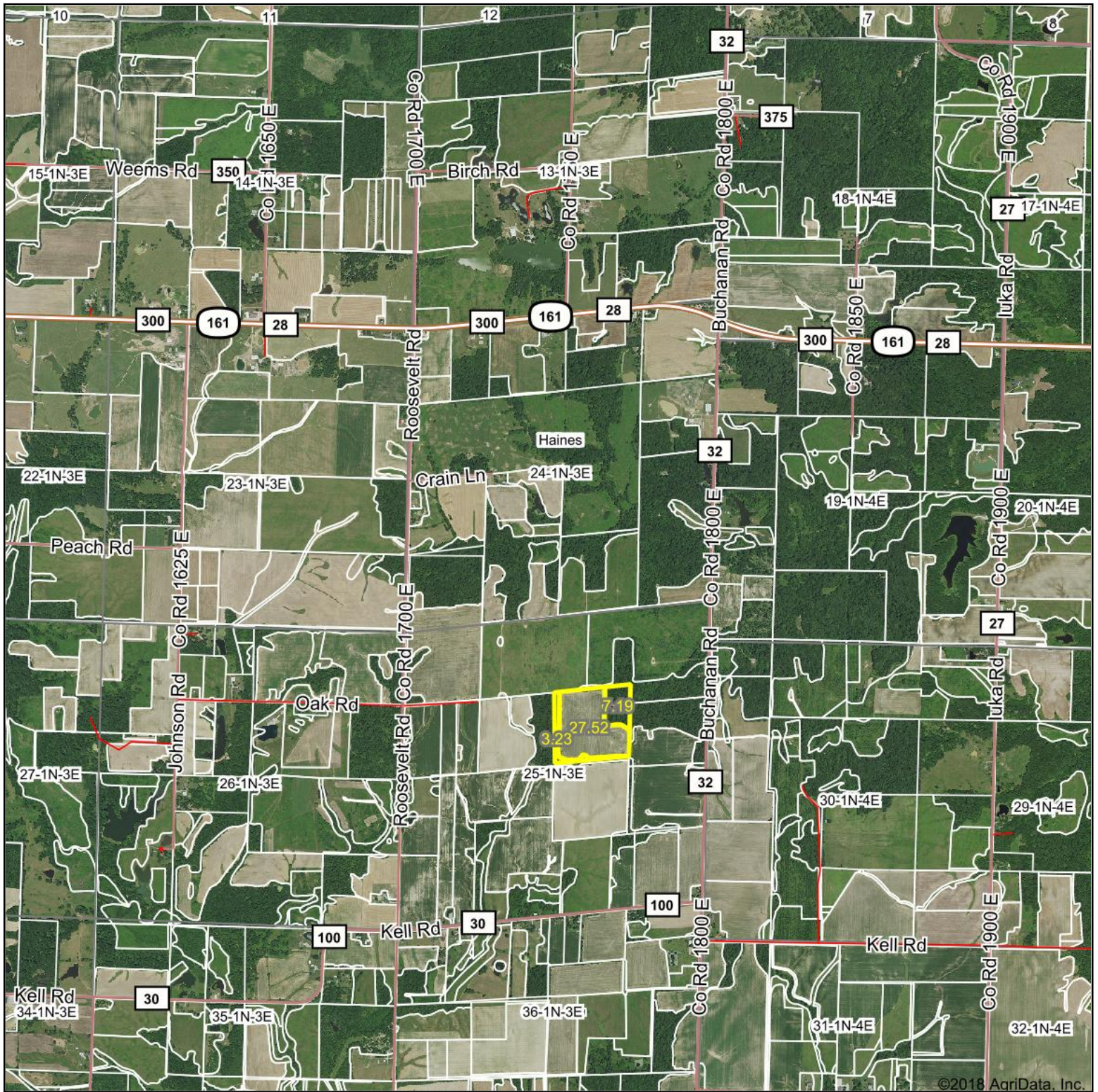
Maps Provided By:
 **surety**
 CUSTOMIZED ONLINE MAPPING
 © AgriData, Inc. 2018 www.AgriDataInc.com

25-1N-3E
Marion County
Illinois



9/18/2018

Aerial Map



©2018 AgriData, Inc.



Maps Provided By:

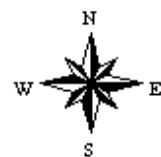


© Agridata, Inc. 2018 www.AgridataInc.com

map center: 38° 30' 32.77, -88° 49' 12.11

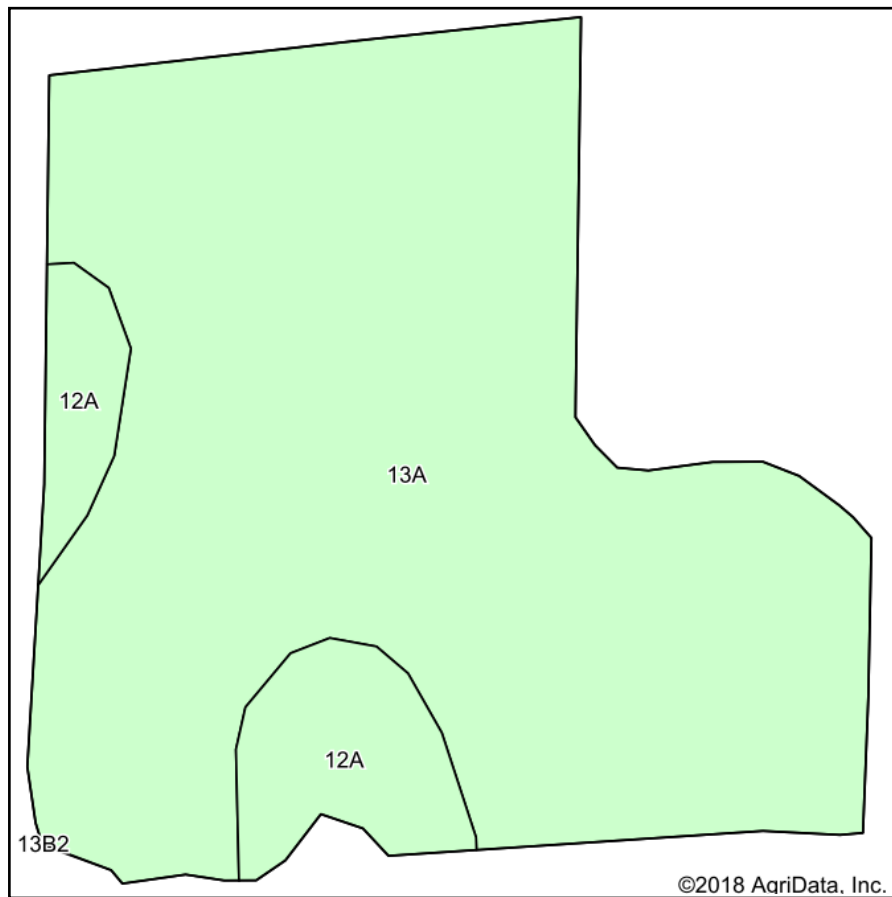
0ft	2730ft	5459ft
-----	--------	--------

24-1N-3E
Marion County
Illinois

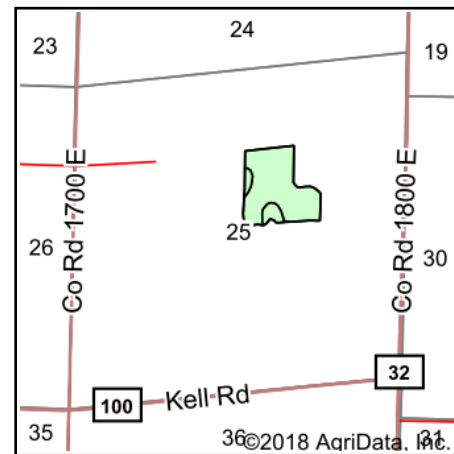


9/15/2018

Soils Map



Soils data provided by USDA and NRCS.



State: **Illinois**
 County: **Marion**
 Location: **25-1N-3E**
 Township: **Haines**
 Acres: **27.52**
 Date: **9/15/2018**



Maps Provided By:



Area Symbol: IL121, Soil Area Version: 14

Code	Soil Description	Acres	Percent of field	Il. State Productivity Index Legend	Corn Bu/A	Soybeans Bu/A	Wheat Bu/A	Grass-legume e hay, T/A	Crop productivity index for optimum management
13A	Bluford silt loam, 0 to 2 percent slopes	24.57	89.3%		136	44	55	3.39	101
12A	Wynoose silt loam, 0 to 2 percent slopes	2.95	10.7%		128	42	51	4.26	97
Weighted Average					135.1	43.8	54.6	3.48	100.6

Table: Optimum Crop Productivity Ratings for Illinois Soil by K.R. Olson and J.M. Lang, Office of Research, ACES, University of Illinois at Champaign-Urbana. Version: 1/2/2012 Amended Table S2 B811

Crop yields and productivity indices for optimum management (B811) are maintained at the following NRES web site: <http://soilproductivity.nres.illinois.edu/>

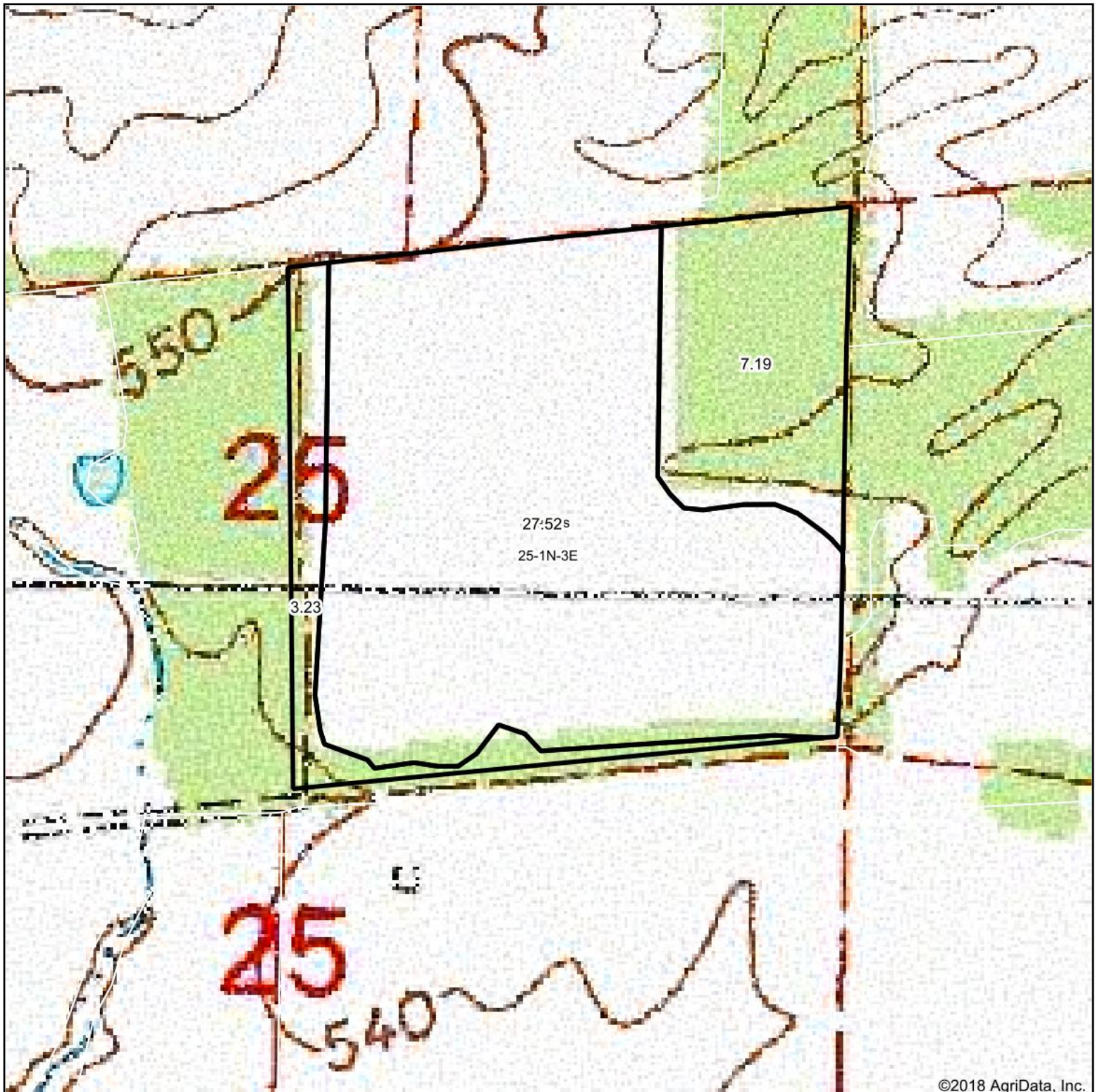
** Indexes adjusted for slope and erosion according to Bulletin 811 Table S3

e Soils in the well drained group were not rated for grass-legume and are shown with a zero "0".

Soils data provided by USDA and NRCS. Soils data provided by University of Illinois at Champaign-Urbana.

*c: Using Capabilities Class Dominant Condition Aggregation Method

Topography Map



©2018 AgriData, Inc.

map center: 38° 30' 1.15, -88° 49' 2.13

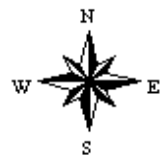
0ft 371ft 741ft



Maps Provided By:



25-1N-3E
Marion County
Illinois



9/15/2018